

McCoy Water Landing Effect v1.0 11/29/2012

Thank you for downloading my Water Landing Effect. This is my first and is designed for cinematic appeal, not for exact accuracy. Three versions are included, High, Medium & Low, all three versions use existing FSX texture and sound files. To get the full effect be sure to max out the environmental sound level and set the "Special effects detail" to high located in the display settings as shown below. Tested on default aircraft it should work with any seaplane, amphibian or vessel.

High = All eight emitters are on.

Medium = A long but short rooster tail effect is removed.

Low = Same as medium but the airborne prop-wash mist is also removed, this is the only effect influenced by wind but with low drag.

Installation:

Un-zip the contents of this file anywhere you please, check the "Use Folder Names" box when un-zipping.

1. Copy all three effect files located in the Effects Folder to your FSX Effects Folder, below is the default path although you may have installed Flight Simulator to a different drive or folder.

Example: C:\Program Files (x86)\Microsoft Flight Simulator X\Effects

2. Go to the aircraft you intend to upgrade.

Example: C:\Program Files (x86)\Microsoft Flight Simulator X\SimObjects\Airplanes\DeHavilland_Beaver_DHC2, backup the existing aircraft.cfg first.

3. Edit the aircraft.cfg as shown below using either the High, Med or Low version. Locate the [EFFECTS] section and revised the value of the two lines shown below. Make sure that "wake=" is left blank, then save and close.

Example: [EFFECTS]

wake=

water=fx_McCoyWaterLandingHIGH

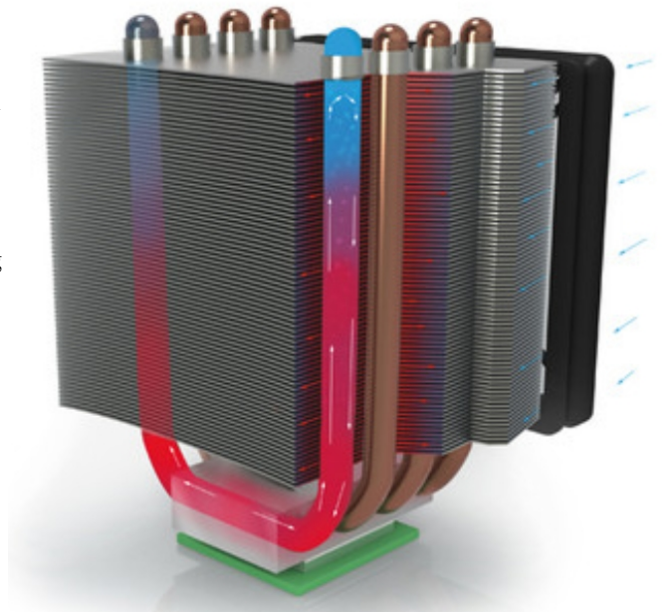
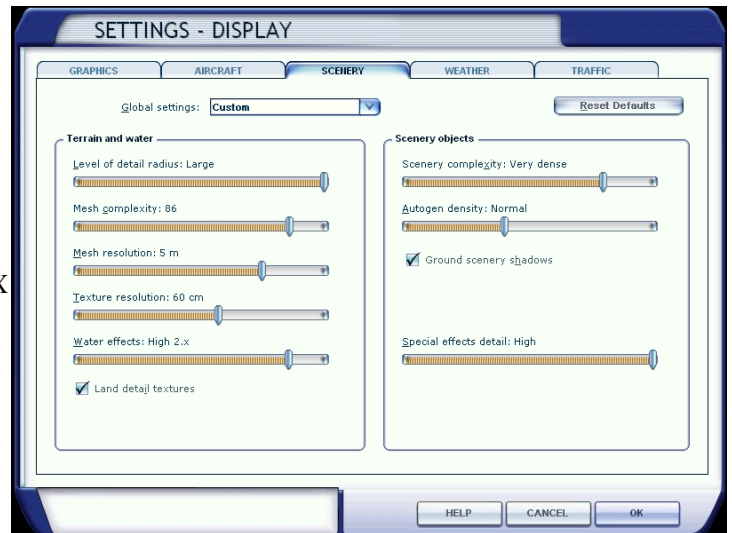
4. That's it, happy water landings...

Optimizing your computer's speed for Flight Simulator

Overclocking your CPU will probably give you your single biggest frame rate gain, the faster you push your computer the more heat it will generate becoming more unstable. How well you cool your CPU will ultimately determine how fast you can push your computer. If you have an air cooled system then you probably have a CPU cooler with heat pipes like the one shown on the right, on my rig I'm using a Cooler Master V8. These pipes are sealed with a small amount of liquid usually distilled water, gravity pulls the liquid down towards the bottom where it collects near the source of the heat. As it boils it becomes vapor and rises drawing heat with it, as the vapors rise they cool condensing near the top, gravity then pulls the drops back down to continue the cycle. This only works if the cooler is in the same orientation as shown in the picture due to the pull of gravity. If you rotate the cooler 90 degrees in any direction the system's primary heat transfer solution will simply stop working. Normally this is not a problem unless you're overclocking the CPU for FSX, if you are overclocking it then you'll get the best results if the cooler is positioned as shown. If you have a tower case then the cooler is turned 90 degrees greatly reducing its efficiency to cool, if you lay your tower on its side to match a desktop case orientation then you may need to buy an external optical drive, because if turned 90 degrees many optical drives will have intermittent problems if they work at all.

If you used the stock cooler that came with your CPU, scrape off the existing thermal transfer paste which is almost a hard putty and replace it with a very thin layer of high end thermal transfer paste like Quick Silver. Even if your CPU is liquid cooled some high end mother-boards now have heat pipes that also require a desktop orientation to actually work.

Ram: Cooling your memory sims is important if overclocked, be aware that some manufacturers glue on fake heat sinks to improve sales, this will actually insulate the sim from air flow causing it to retain heat and loose stability. I've installed 12 GB of matched Patriot Viper Xtream DDR3 PC3-17000, they require overclocking to achieve the advertised 2133 MHz. I had problems with stability until I removed the fake heat sinks that were attached with double back foam tape, doesn't look as nice but my system is rock solid now.



Recommended Software

In addition to overclocking your CPU, video card and Ram, below are a few tips that will speed up your computer. Nothing mentioned here will cost you a dime, but you'll need to down load, install and spend a little time becoming familiar with the following programs.

“**Wise Care 365 Free**”. **Do not get the Pro version** because the free version works fine.

<http://www.wisecleaner.com/>

Highly recommended, this will remove applications that rob CPU cycles. It will clean & de-frag your registry and drives. It will speed up your system and consequently your boot time. I went from booting up in about 37 seconds down to 23 and FSX was better able to hold 30 fps. Wise Care 365 is powerful, easy to use and rated safe by C'NET, which is where I found it.

“**Texture Max Load Editor**” By Steve Frost, Brandon Filer. (frostysoftware.com.)

<http://www.flightsim.com/> (you'll need to preform a search)

Highly recommended, designed to widen the pipeline for textures. By default, FSX's maximum texture resolution is set to the 1024x1024 scale. TMLE can modify this to 2048x2048, and even 4096x4096, allowing you to take full advantage of HD textures.

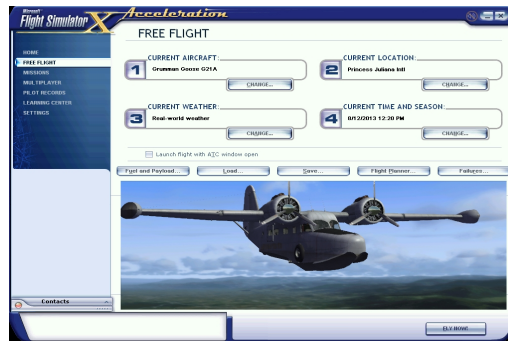
“**EndItAll**” (Free)

<http://enditall.en.softonic.com/>

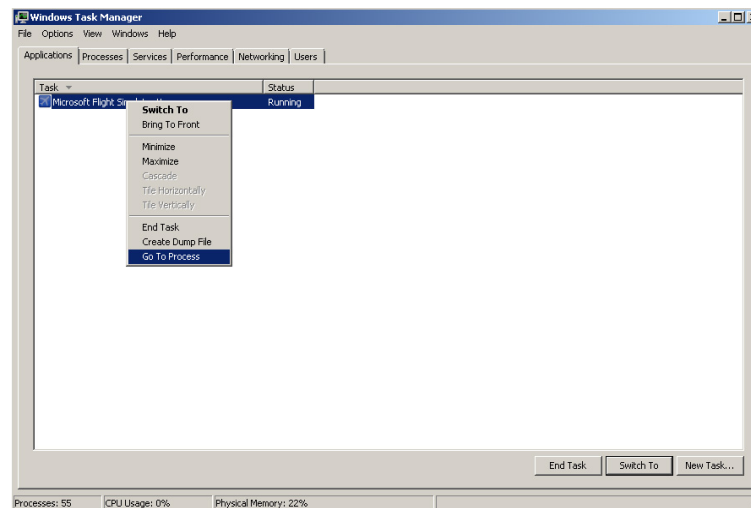
Highly recommended. This little program will close or kill unnecessary processes to free up system resources. This will only turn items off, it will not delete anything. Your next reboot will turn everything back on, run this program just before starting FSX.

When FSX is Running

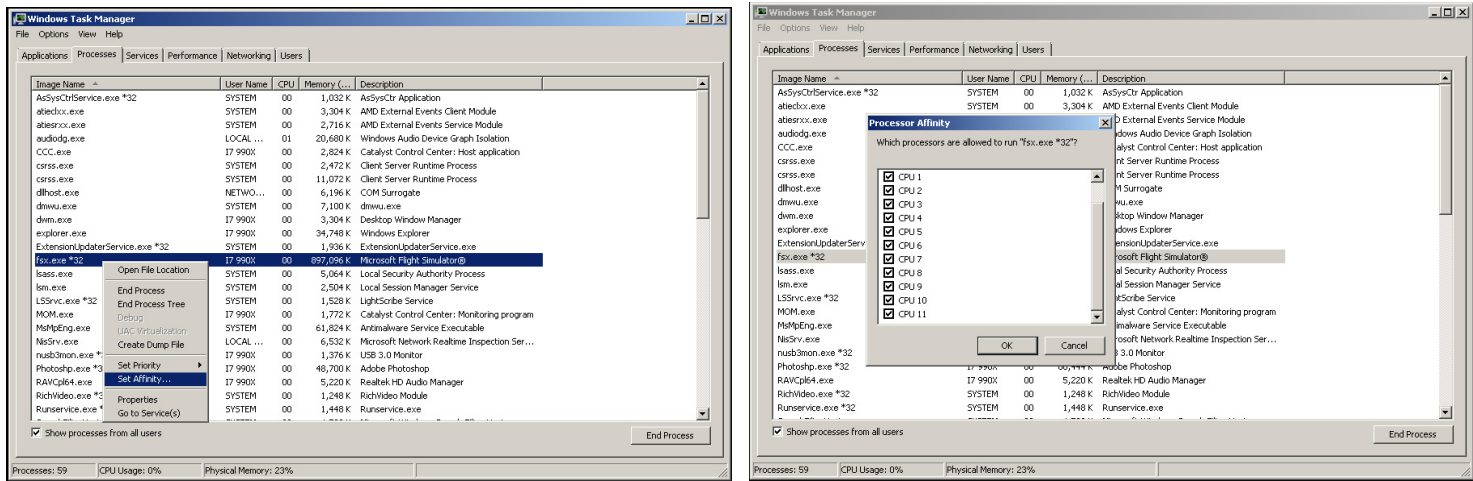
After the FSX opening screen appears start “Task Manager” by pressing Control+Alt+Delete and choosing it from the pop-up menu, it is best to do this before entering full screen mode in FSX.



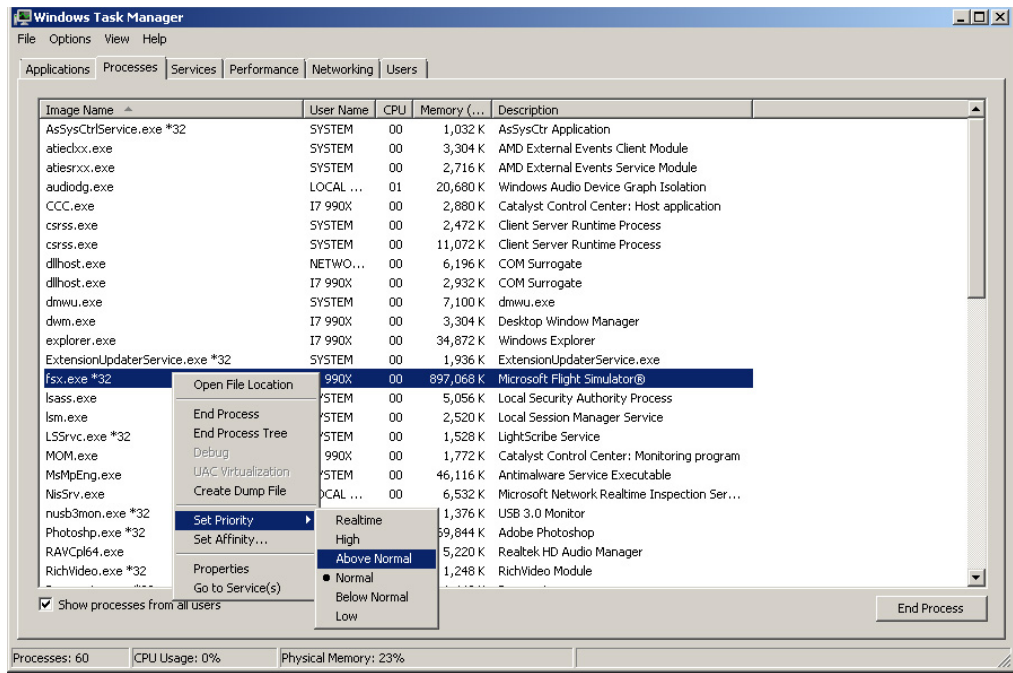
Right click the Applications Tab (as shown in “Task Manager 1.jpg”). Right click on FSX and select “Go To Process”.



From the Process Tab right click on FSX and select “Set Affinity” as shown on below Ensure that all CPU cores are assigned to fsx.exe.



This last part is optional and may cause your computer to crash but I'm able to “Set Priority” to “Above Normal” (as shown in “Task Manager 4.jpg”). Because FSX is primarily CPU limited setting this has high as yours system will allow will yield a measurable effect.



When it comes to Flight Sim every little bit helps.

Good luck ;-)
Vince McCoy
vincem.mccoy@gmail.com

This is Public Domain, anybody can use these effects with all attached documentation and images for any purpose with no restrictions, including but not limited to inclusion with they're own free, shareware or payware aircraft or vessel. These effects may be altered in any way without obtaining prior permission from me... so have at it. Overclocking is dangerous and may permanently damage your hardware, I except no responsibility if you brick your system. Many high end mother-board manufacturers now include over clocking software that should be very safe to run, especially if you stick with the pre-set options so give it a shot.