

ELEV 114

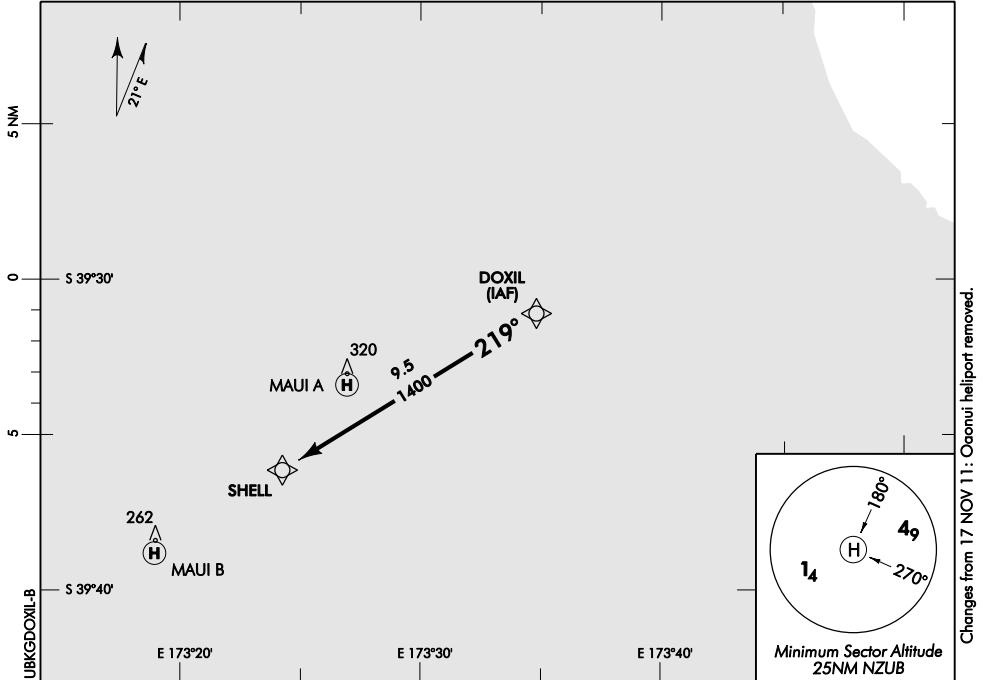
CAT H

MAUI B

NZUB

RNAV (GNSS) DOXIL ARRIVAL

MAUI TRAFFIC: 133.65



1. For holding refer to Instrument Approach Chart

FOR HELICOPTERS NEW ZEALAND APPROVED OPERATORS ONLY**Effective: 26 JUL 12**

ELEV 114

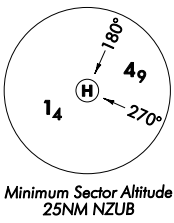
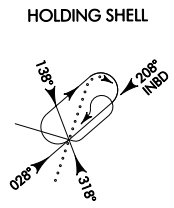
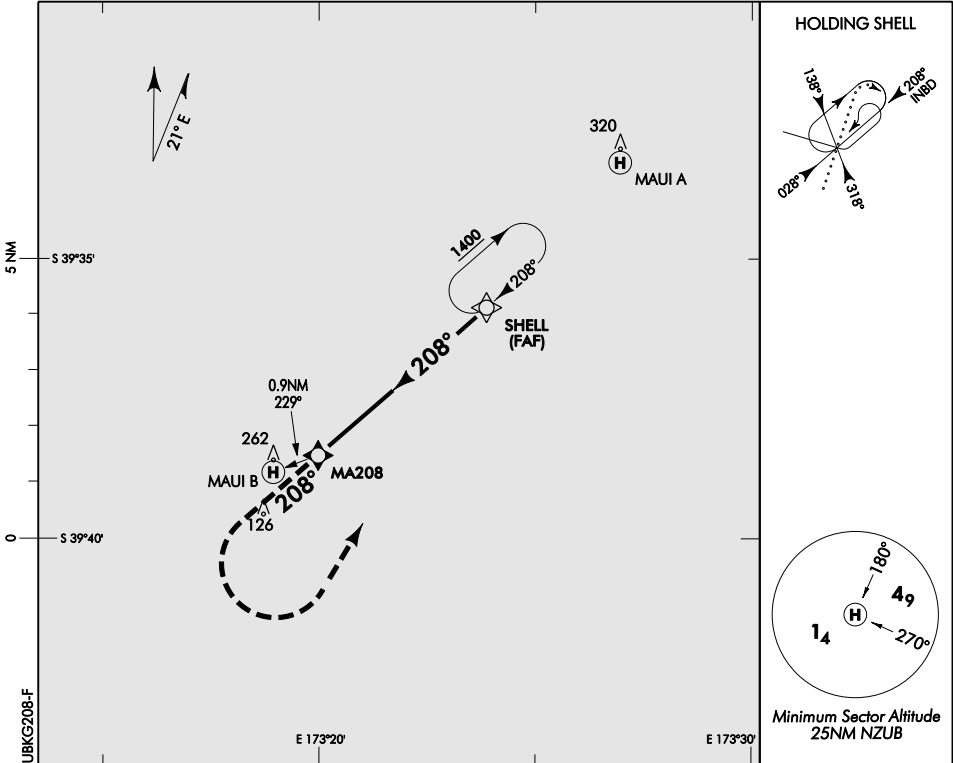
CAT H

NZUB

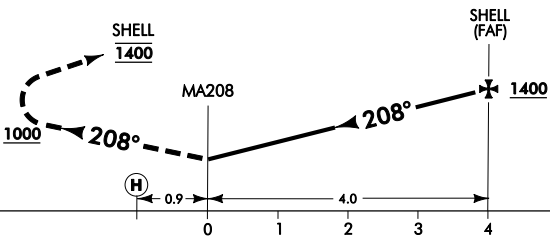
MAUI B

RNAV (GNSS) 208

MAUI TRAFFIC: 133.65



Use MAUI B QNH



Inbound track at SHELL to be within 60° of final APCH

MISSED APCH: Climb on 208° to 1000, turn LEFT, track direct to SHELL 1400

DISTANCE to WPT	MA208	1	2	3	SHELL	
Advisory Altitude 6.5%	MDA	800	1200	1600	2000	
Category	H					
RNAV	400(286) - 2000					

FOR HELICOPTERS NEW ZEALAND APPROVED OPERATORS ONLY

Changes from 2 SEP 04: Chart title, approved operators.