

LOC/DME I-DHY	APP CRS	Rwy Idg	8003
110.1	247°	TDZE	40
Chan 38		Apt Elev	42

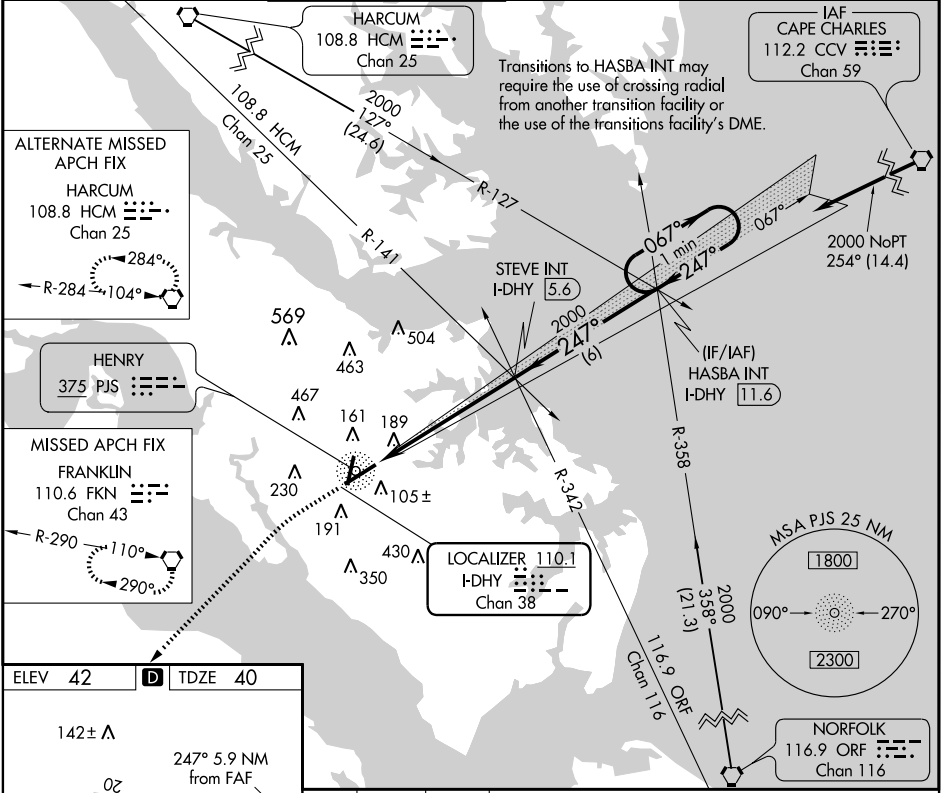
ILS or LOC RWY 25

NEWPORT NEWS/ WILLIAMSBURG INTL (PHF)

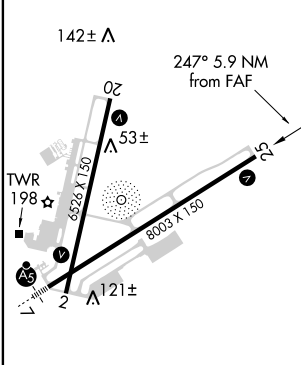
VDP NA with Norfolk Intl altimeter setting. When local altimeter setting not received, use Norfolk Intl altimeter setting: increase all DA 49 feet, increase all MDA 60 feet.

MISSED APPROACH: Climb to 2100, then left turn direct FKN VORTAC and hold.

ATIS 128.65	NORFOLK APP CON 125.7	NEWPORT NEWS TOWER★ 118.7 (CTAF) 0 257.9	GND CON 121.9 348.6	CLNC DEL 121.65 225.4	UNICOM 122.95
-----------------------	---------------------------------	--	-------------------------------	---------------------------------	-------------------------



ELEV 42	D	TDZE 40
---------	----------	---------



REIL Rwy 25 and 25	0
HIRL Rwy 25 and 7-25	0
FAF to MAP	5.9 NM
Knots	60 90 120 150 180
Min:Sec	5:54 3:56 2:57 2:22 1:58

	2100	FKN	STEVE INT I-DHY 5.6	HASBA INT I-DHY 11.6	One Minute Holding Pattern
*LOC only					
*I-DHY 0.9					
	2000		2000	2000	GS 3.00° TCH 55
	1.2	4.7 NM	6 NM		
CATEGORY	A	B	C	D	
S-ILS 25	240-3/4	200 (200-3/4)			
S-LOC 25	480-1	440 (500-1)	480-1 1/4 440 (500-1 1/4)	480-1 1/2 440 (500-1 1/2)	
CIRCLING	520-1	478 (500-1)	520-1 1/2 478 (500-1 1/2)	600-2 558 (600-2)	

ILS or LOC RWY 25

NE-3, 28 JUN 2012 to 26 JUL 2012

NE-3, 28 JUN 2012 to 26 JUL 2012