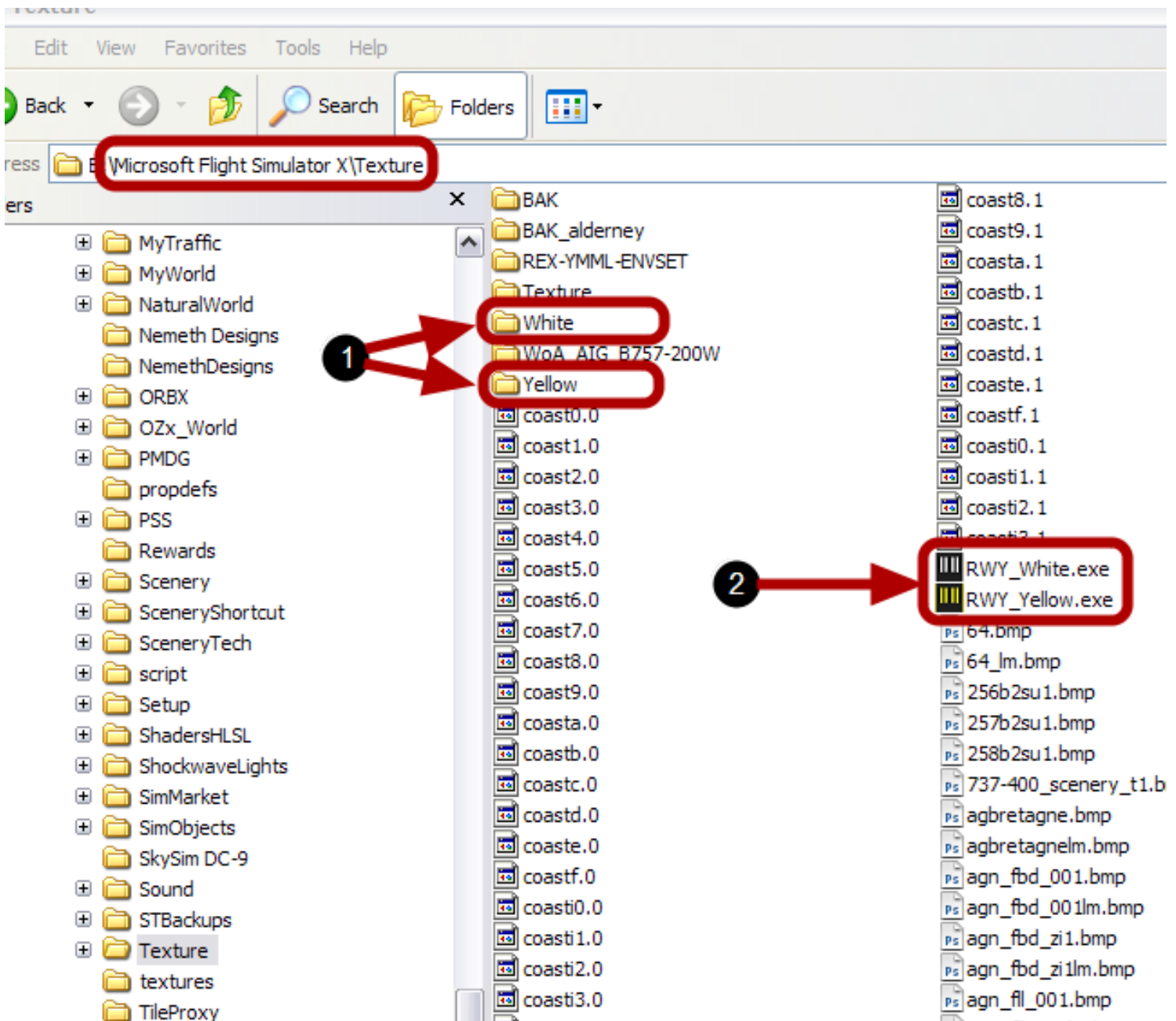


RWY Switcher

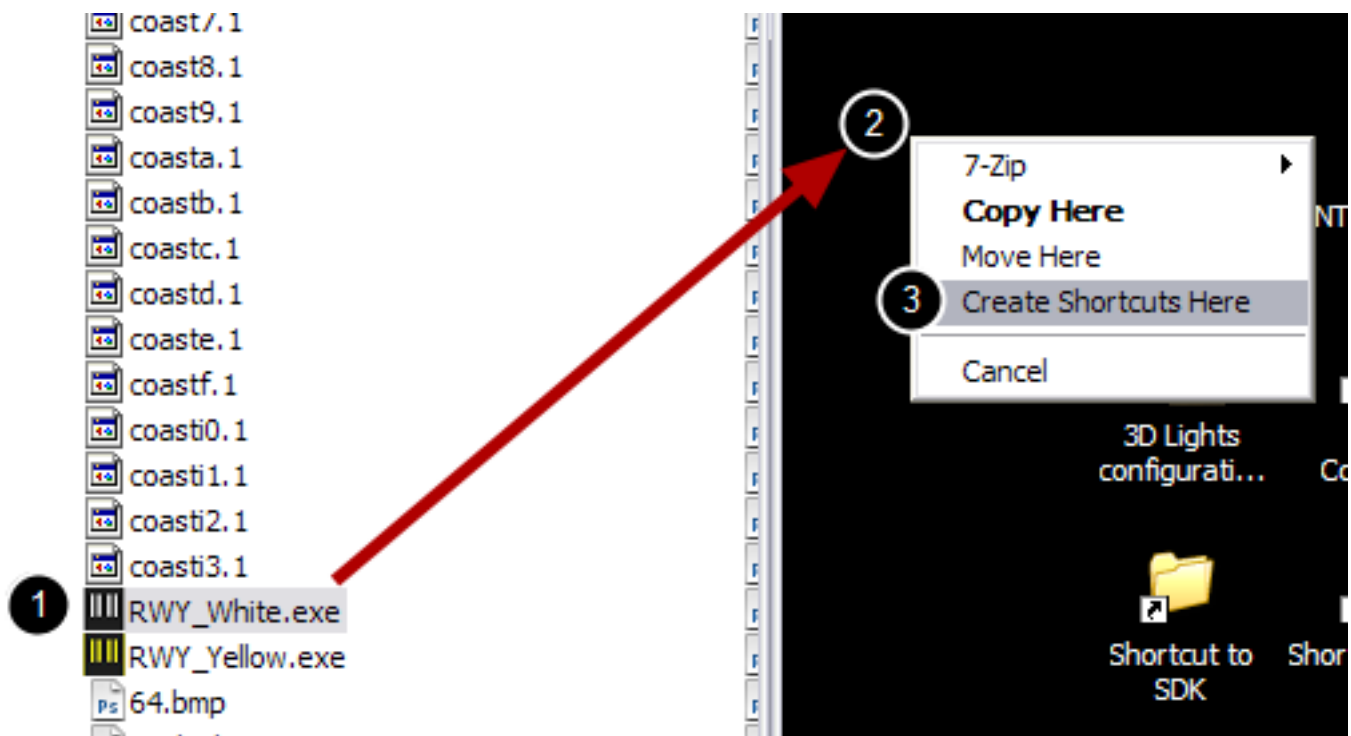
With RWY Switcher you can change the color of the default rwy markings. Note: this will change colors on a global basis but if you follow the tutorial of how to set up and configure the shortcut's, you can easily change the color's even while in flight, and from full screen mode.

Step 1 Installation



After unzipping the archive into your main FSX installation folder, make sure that you have within the main *FSX\texture* folder the following files and folders, **1)** two folders named *white* and *yellow*, **2)** and two exe files called "*RWY_White.exe*" and "*RWY_Yellow.exe*"

2. Creating Shortcut's



NOTE: The following guides describes the steps for *only* one shortcut, but the procedures are identical which means that you repeat the steps for the other switcher program as well.

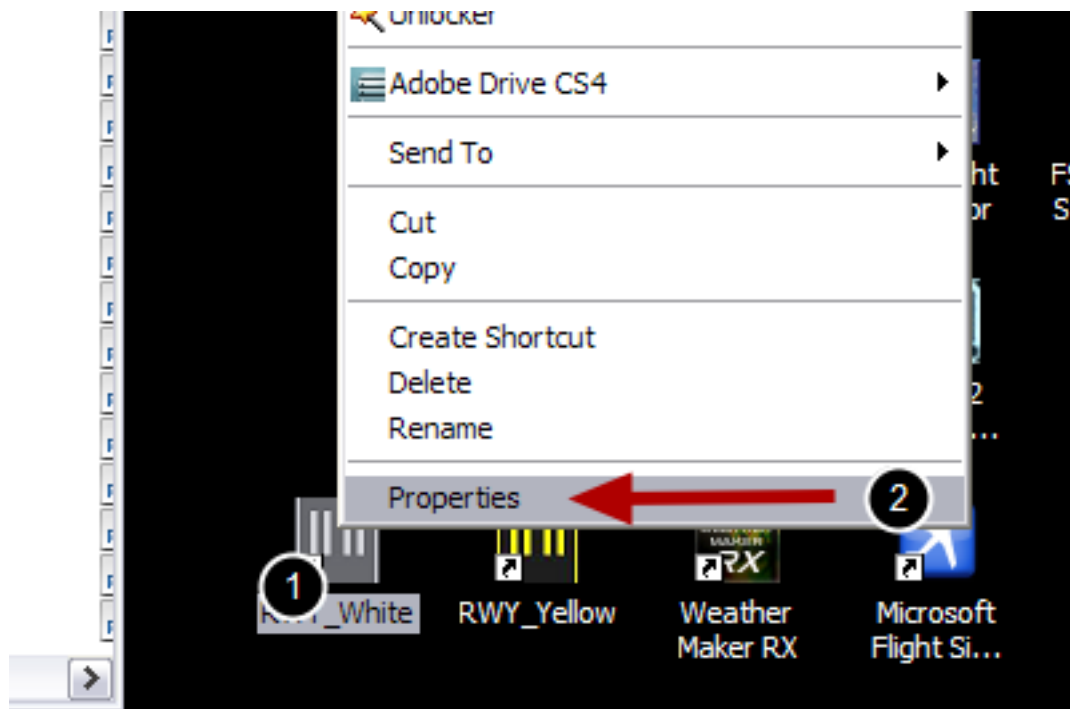
- 1) Click and hold the right mouse button and drag the icon over to the desktop.
- 2) When you release the mouse button, a menu will appear
- 3) Select the "*Create Shortcuts Here*" option.

And now you are done, double click on the corresponding shortcut to execute the change.

Tip: After making the shortcuts, you can rename them to your liking. Just right click the shortcut and select "*rename*", renaming doesn't affect the operation of the program, it is purely aesthetic.

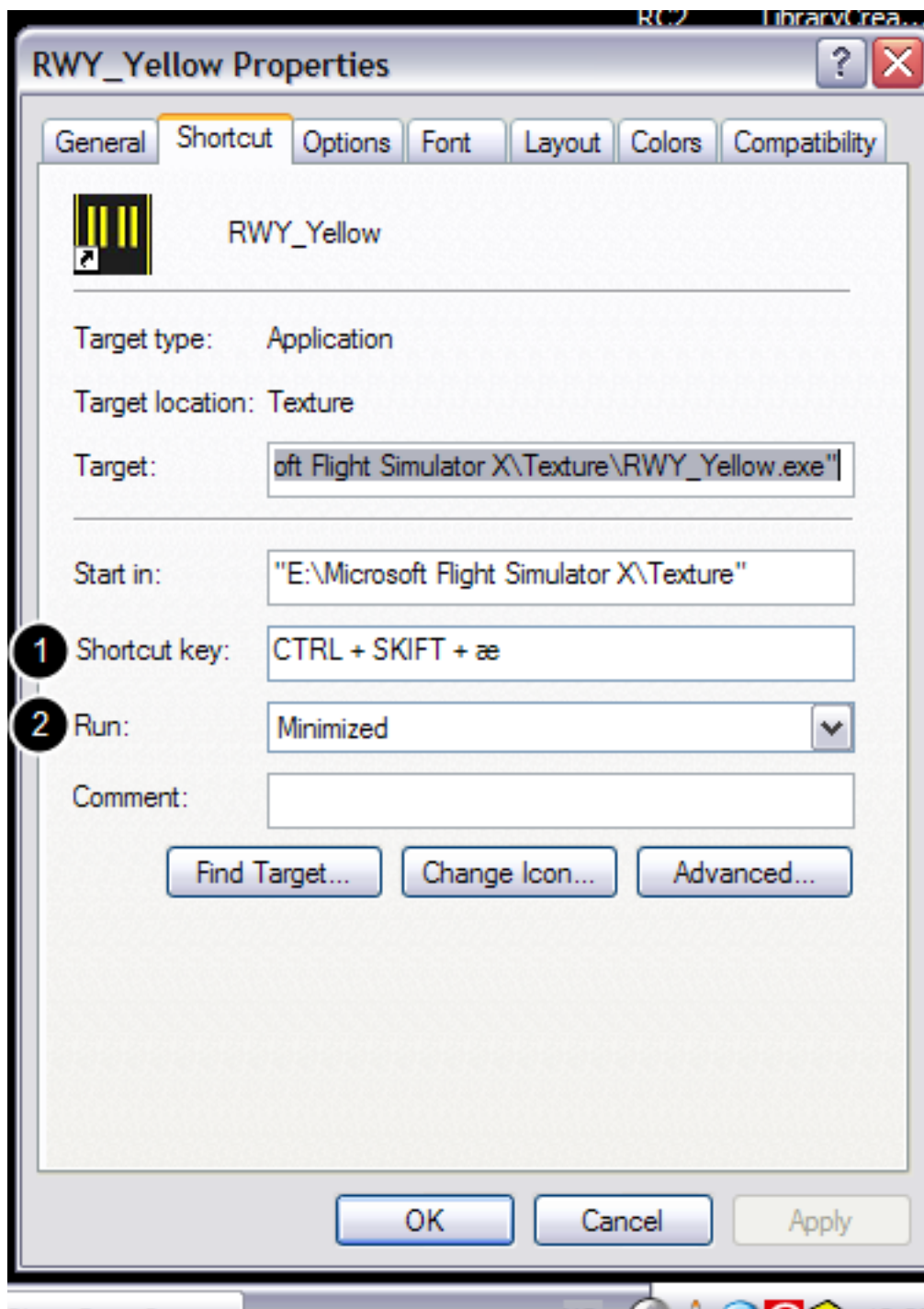
If you run FSX in *full screen mode* or just don't want to switch to the desktop to do the switching, read on, the next steps shows you how to set up and configure the shortcut's to operate through *key combinations* and to run *silently* in the background.

3. Configuring the Shortcut's



1) Again, right click on the shortcut icon you preciously made on the desktop and a menu appears, 2) select "*Properties*"

4. Assigning Shortcut Key Combination's and Run Command Properties



Now the property options is open, and you should see a window similar to the one above. The two important things here are **1)** the *shortcut key*.

You can make any key combination that suits you, just make sure there are no conflicts with shortcuts you use in FSX.

Although using shortcut's are not necessary to operate this utility, they are a necessity if you want the ability to switch RWY colors while in full screen mode without having to go out of full screen mode.

2) Run, this is important for full screen operations, set it to "**Minimized**" otherwise when running the utility, it will suppress FSX full screen and bump you out of it. In minimized mode it runs silently and unnoticeable in the background and doesn't disturb in any way or fashion.

Enjoy!

SCARP