

FSX Acceleration

Avey Field State Airport

69S

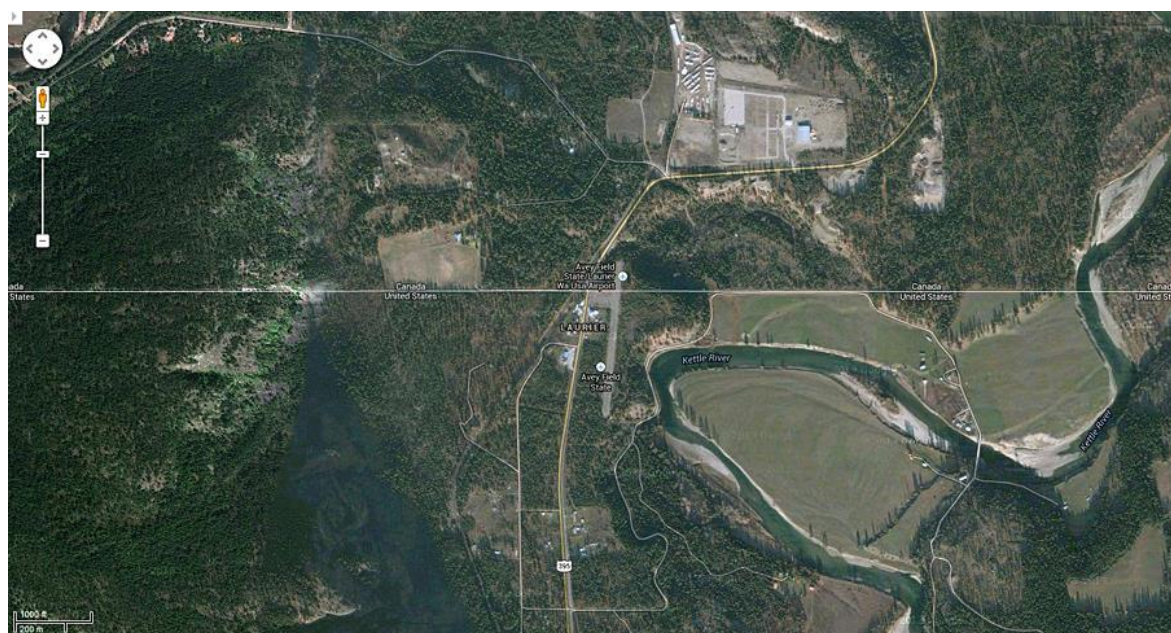
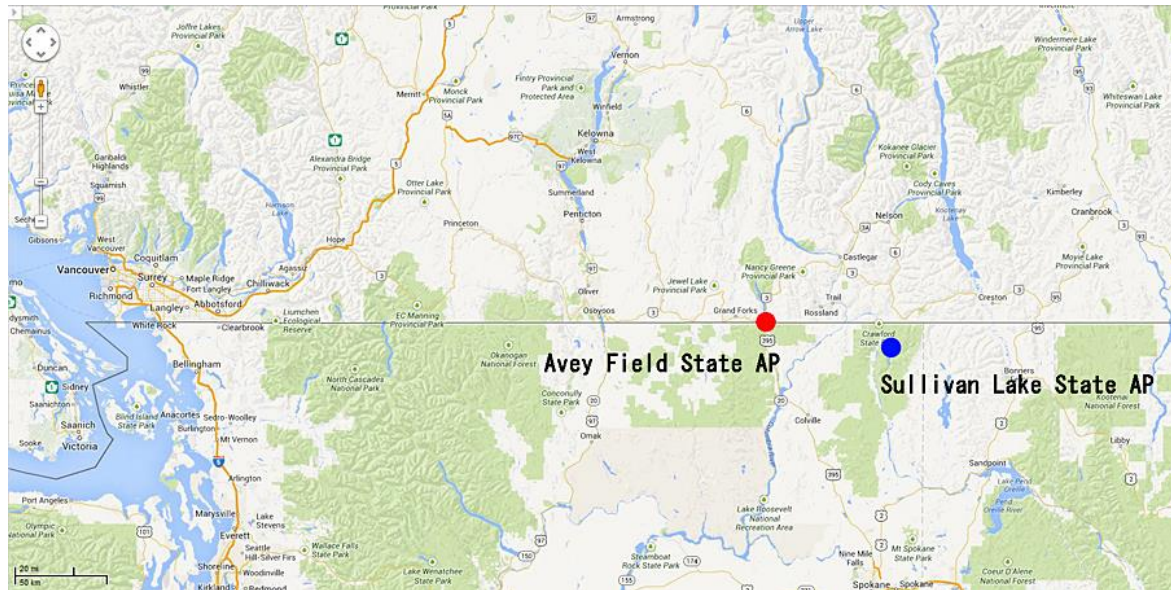
V1.00

Laurier, Washington, USA



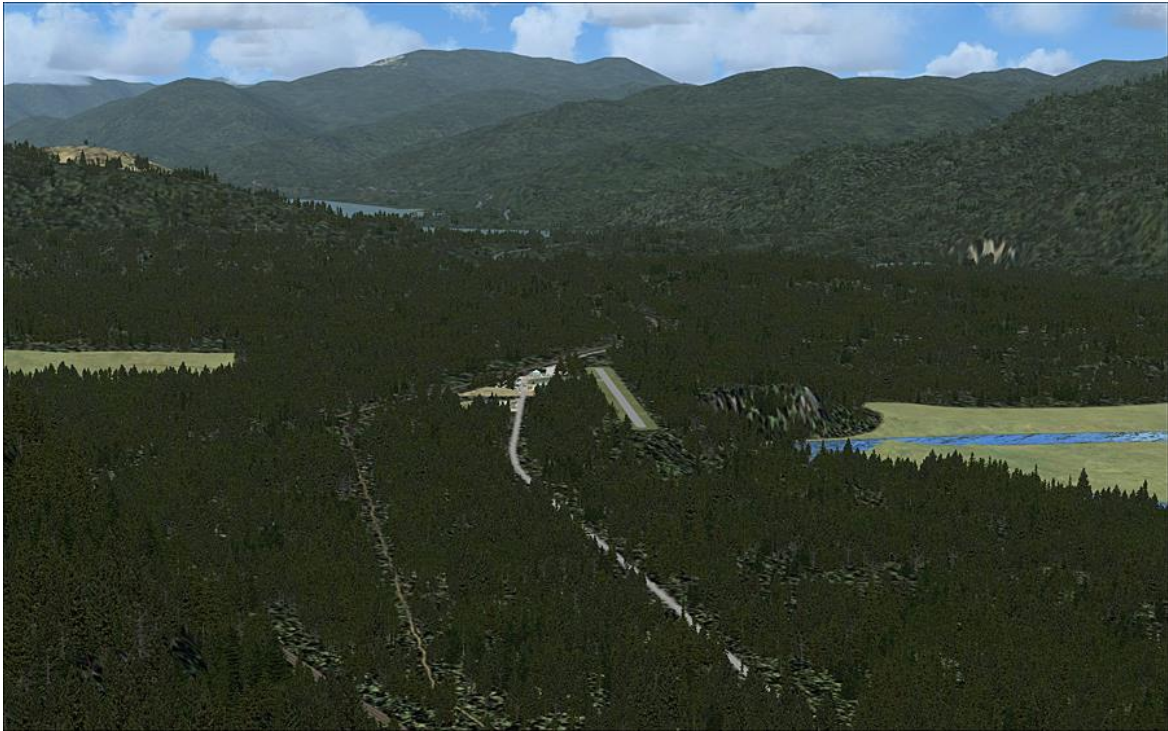
Let's Fly Association

Location



Location : Canada - United States border

Avey Field State Airport



Lat/Long: 48° 59.9027N / 118° 13.3559W
Elevation: 1655.0ft / 504 m
Runway: 17 / 35 1975 × 40 ft (602 × 12 m)

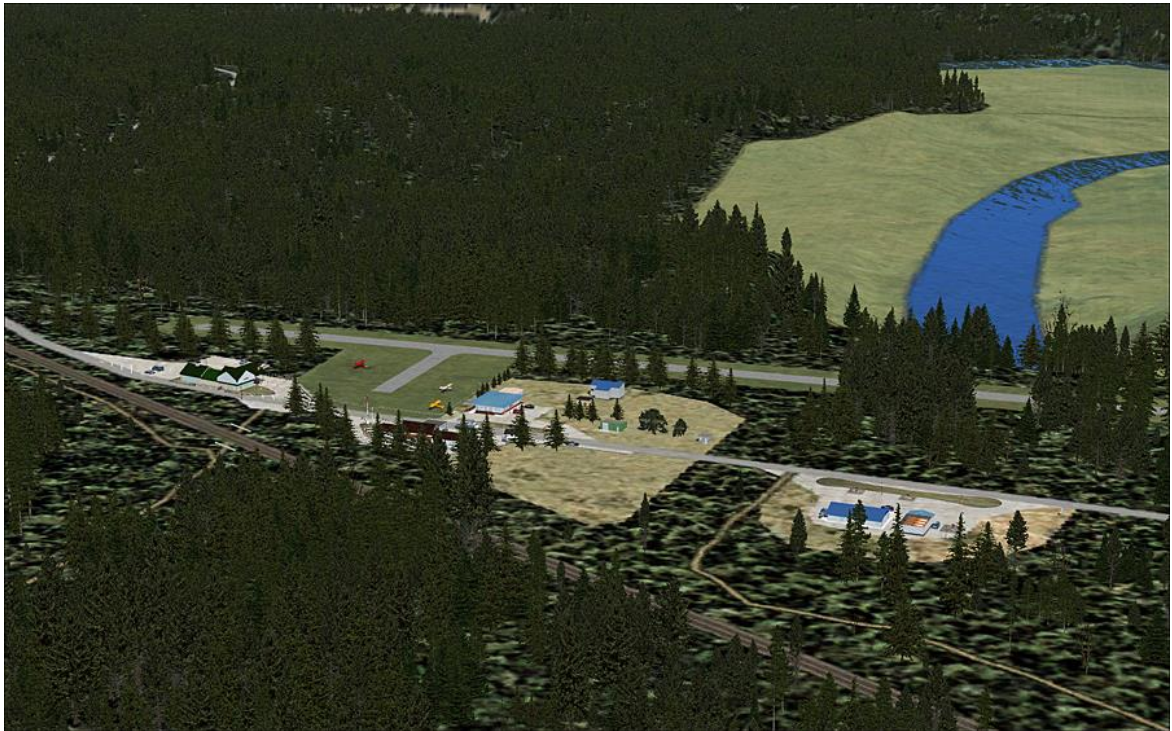


FSX Default



Avey Field State Scenery

Avey Field State Airport adapts to default scenery of the FSX.





Installation

Please run the installer.

Uninstallation

When you uninstall this scenery, Please delete it from the Control Panel.

Setting



Mesh Resolution ⇒ 2 m ~ 1 m



Scenery complexity ⇒ Normal ~ Extremely dense



Option_Tree

The tree of standard setting is spring, summer, autumn.
In the case “Winter scenery” .



Change the BGL file of the tree to the winter file.

Spring	Summer	Autumn
Winter		

[FSX_Avey V1_Tree-01. BGL](#)

[FSX_Avey_V1_Tree_Winter-01. BGL](#)



Kettle River

Thank you for downloading this scenery.

Have a nice flight!

Let's Fly Association / TONO

Let's Fly http://www7a.biglobe.ne.jp/~lets_fly/

Email tono556@kir.biglobe.ne.jp