

TDS 727 Series



Option Type/DECAL Configuration Manual

27JUL2015-03



TDS 727 Series Configuration Manual

Forward

TDS727 model has several option antenna's and switchable actions.

For activating those , needs to set the Option switch at aircraft.cfg's title= line.

This document explains which switch is what and what to set.



TDS 727 Series Configuration Manual

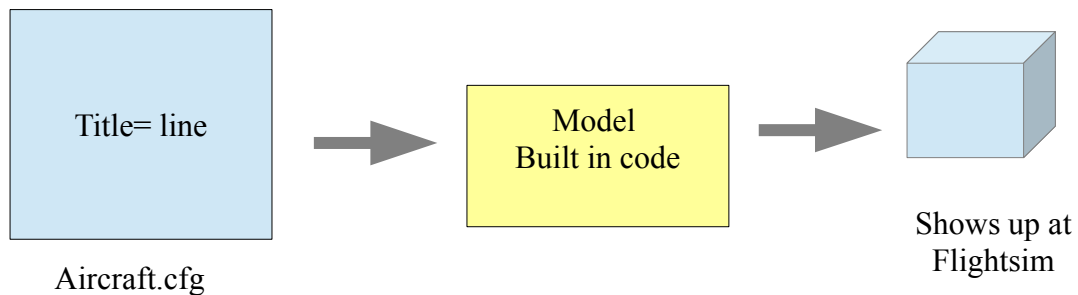
Index

| | |
|--|----|
| 1System schematic..... | 4 |
| 2Basic knowledge about aircraft.cfg's "title="line..... | 5 |
| 2.1 Length limit of characters on "title=" line..... | 5 |
| 2.2 Do not take off the Copyright message from the title= line. | 6 |
| 3Example of how to set the Option switches..... | 7 |
| 4Option Types Infomation..... | 9 |
| Option Type 1st letter +T?xxx..... | 9 |
| Option Type 2nd letter +Tx?xx..... | 10 |
| Option Type 3rd letter +Txx?x..... | 11 |
| Option Type 4th letter +Txxx?..... | 12 |
| 5Option DECALs..... | 13 |
| Option DECALs 1st letter +D?x..... | 13 |
| Option DECALs 2nd letter +Dx?..... | 13 |



1 System schematic

At this system ., when aircraft is loaded to the flightsimulator and also flightsimulator side runs the XML , “title=” line of the aircraft.cfg is read and sets the model visual.



The red part under is the “title=” line of aircraft.cfg

```
[fltsim.0]
title=FREEWARE_(C)_TDS_01AUG2014_722-JT8D9SER--W +D00 +T0080 FDE TESTs
sim=TdsB722
model=
panel=
sound=
texture=
kb_checklists=
kb_reference=
```

So when changing the options , where to change is +D?? and +T???? part.

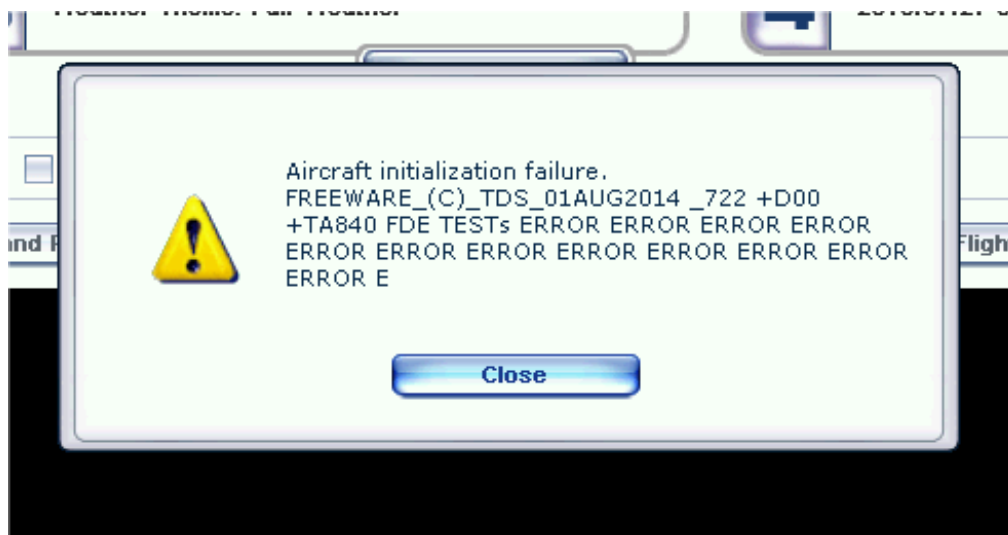


2 Basic knowledge about aircraft.cfg's "title=" line

There are some points when touching the "title=" line of aircraft.cfg

2.1 Length limit of characters on "title=" line.

At FSX , Aircraft.cfg's "title=" line **must not exceed** 127 characters.
If exceeds , will have a error like under when selected a aircraft.

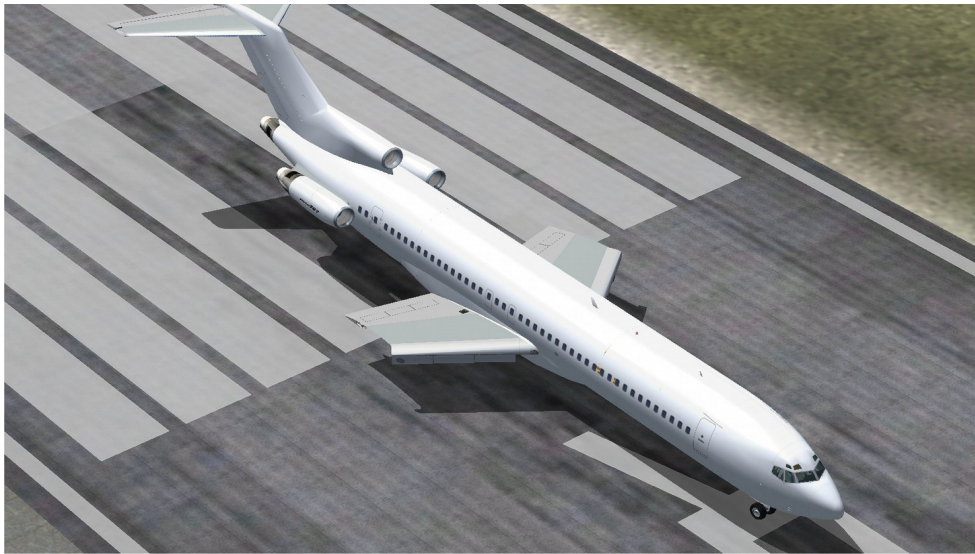


At FS2004 there was no problem with this.



2.2 Do not take off the Copyright message from the title= line.

If take off those lines , will loose a wing also will have some problems during the flights.



May feel stupid having those lines but this was needed.

There was a company tried to sell models with user paints as their products.

They started showing at youtube and sent out as beta.

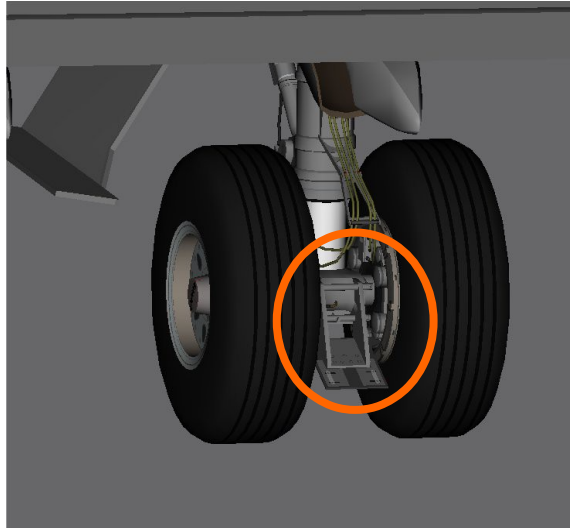
What they did was just renamed the filenames and tried to show as theirs and sell.

So for those , we needed to have a place showing this is clearly a freeware.



3 Example of how to set the Option switches

At this example , set the gravel deflector to the model






TDS 727 Series Configuration Manual

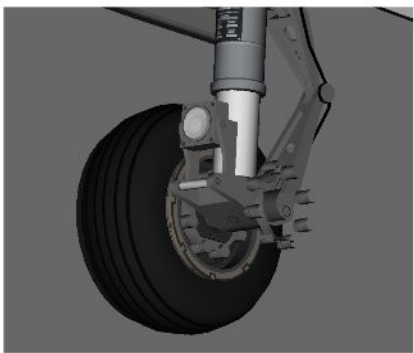
First look for which option it is at the section 4 of this document.

Option Type 1st letter +T?xxx

| Num | Letter | 0 | 1 | 2 | 3 | 4 | 5 | 6 | 7 | 8 | 9 | A | B | C | D | E | F |
|-----|--------------------|---|---|---|---|---|---|---|---|---|---|---|---|---|---|---|---|
| 4 | Wingtip logo light | | | | | | | | | Y | Y | Y | Y | Y | Y | Y | Y |
| 3 | Rear NAV light | | | | Y | Y | Y | Y | | | | | | Y | Y | Y | Y |
| 2 | Nose gear brake | | | Y | Y | | | Y | Y | | | Y | Y | | | Y | Y |
| 1 | Gravel Deflector | Y | | Y | | Y | | Y | | Y | | Y | | Y | | Y | |



Gravel Deflector



Nose gear Brake

You can find the gravel deflector on Num1.

And then go up to the yellow back colored part , it says 1

If only gravel deflector is “Y” , the ? Mark part will be 1

If want with combinations , check the combinations from the list and set the letters written on the letter part.

If none of them are needed will be 0 at that letter part.

One example , if want Gravel Deflector and Nose gear brake and thats all for these part, will be +T3xxx

This is basically a 0/1 bit used inside the computer.

Why doing this is from the FSX's title line lengh limitation.

Want to make the line short.



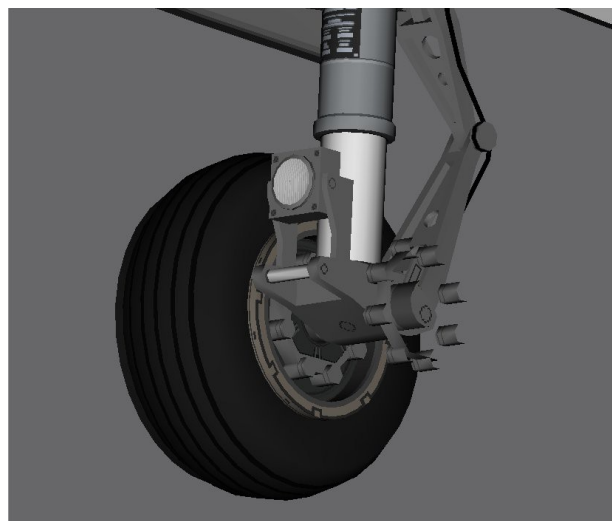
4 Option Types Infomation

Option Type 1st letter +T?xxx

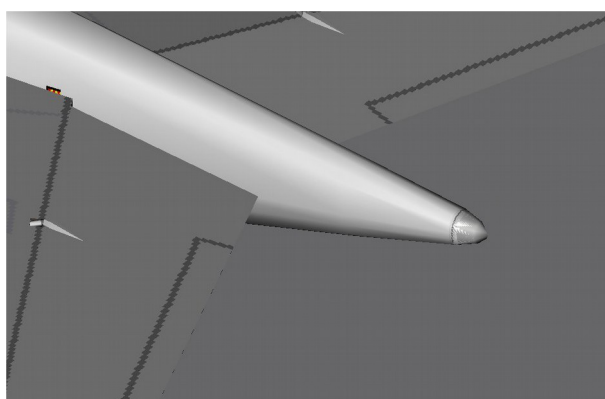
| Num | Letter | 0 | 1 | 2 | 3 | 4 | 5 | 6 | 7 | 8 | 9 | A | B | C | D | E | F |
|-----|--------------------|---|---|---|---|---|---|---|---|---|---|---|---|---|---|---|---|
| 4 | Wingtip logo light | | | | | | | | | Y | Y | Y | Y | Y | Y | Y | Y |
| 3 | Rear NAV light | | | | | Y | Y | Y | Y | | | | | Y | Y | Y | Y |
| 2 | Nose gear brake | | | Y | Y | | | Y | Y | | | Y | Y | | | Y | Y |
| 1 | Gravel Deflector | | Y | | Y | | Y | | Y | | Y | | Y | | Y | | Y |



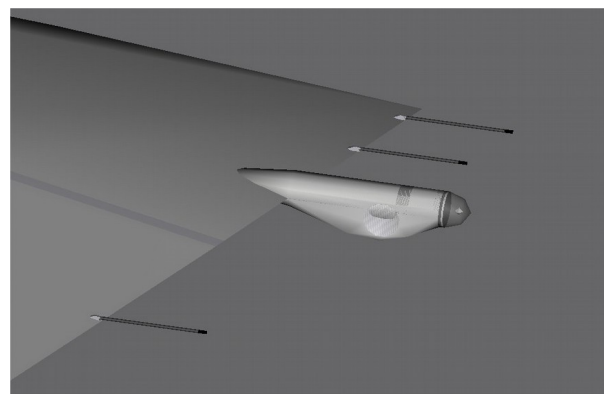
Gravel Deflector



Nose gear Brake



Rear NAV light



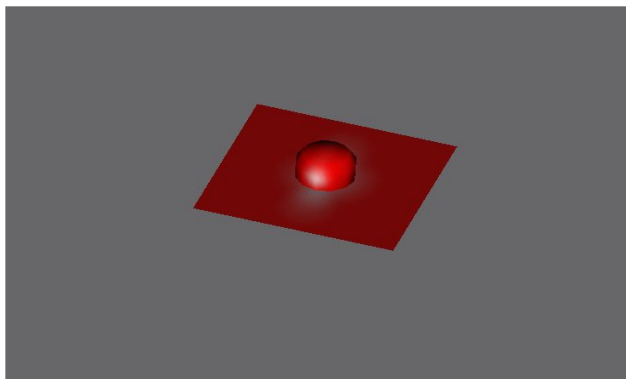
Logo Light



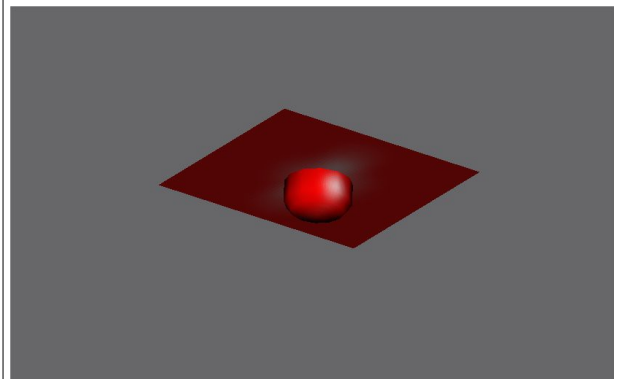
TDS 727 Series Configuration Manual

Option Type 2nd letter +Tx?xx

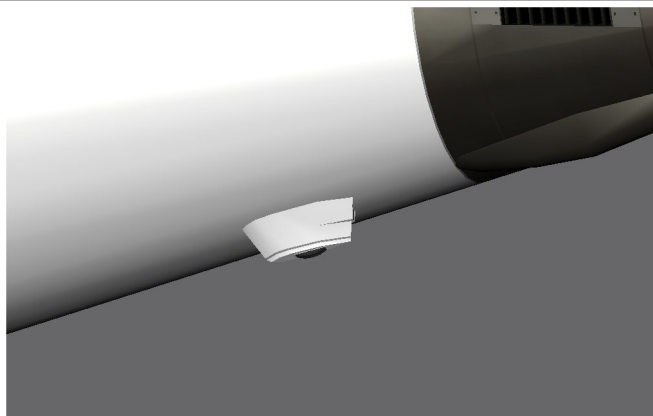
| Num | Letter | 0 | 1 | 2 | 3 | 4 | 5 | 6 | 7 | 8 | 9 | A | B | C | D | E | F |
|-----|-------------------------------|---|---|---|---|---|---|---|---|---|---|---|---|---|---|---|---|
| 8 | Stair side cloth | | | | | | | | | Y | Y | Y | Y | Y | Y | Y | Y |
| 7 | Optional Tail Skid | | | | | Y | Y | Y | Y | | | | | Y | Y | Y | Y |
| 6 | Bottom Beacon Rotate/Flash(Y) | | | Y | Y | | | Y | Y | | | Y | Y | | | Y | Y |
| 5 | Top Beacon Rotate/Flash(Y) | | Y | | Y | | Y | | Y | | Y | | Y | | Y | | Y |



Top Beacon Rotate/Flash



Bottom Beacon Rotate/Flash



Optional Tail Skid



Stair side cloth

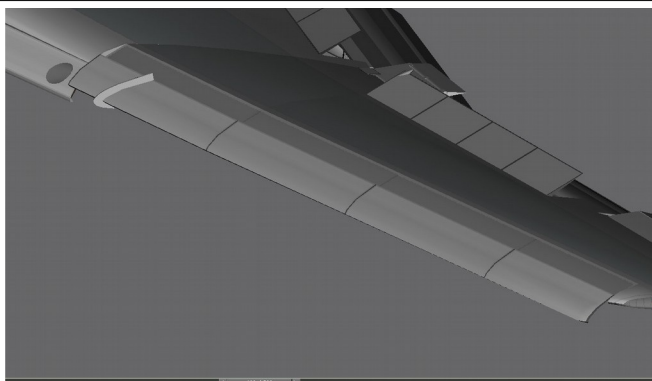


TDS 727 Series Configuration Manual

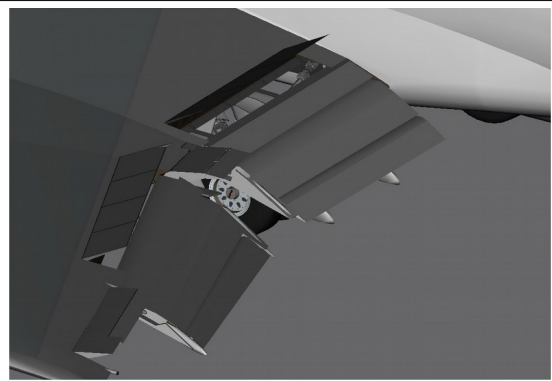
Option Type 3rd letter +Txx?x

| Num | Letter | 0 | 1 | 2 | 3 | 4 | 5 | 6 | 7 | 8 | 9 | A | B | C | D | E | F |
|-----|---------------------------------|---|---|---|---|---|---|---|---|---|---|---|---|---|---|---|---|
| 12 | Winglet rear Flasher | | | | | | | | | Y | Y | Y | Y | Y | Y | Y | Y |
| 11 | Vertical Stabilizer top antenna | | | | | Y | Y | Y | Y | | | | | Y | Y | Y | Y |
| 10 | Raisbeck IGW/HGW TE Flap | | | Y | Y | | | Y | Y | | | Y | Y | | | Y | Y |
| 9 | Raisbeck Leading Edge Slat | | Y | | Y | | Y | | Y | | Y | | Y | | Y | | Y |

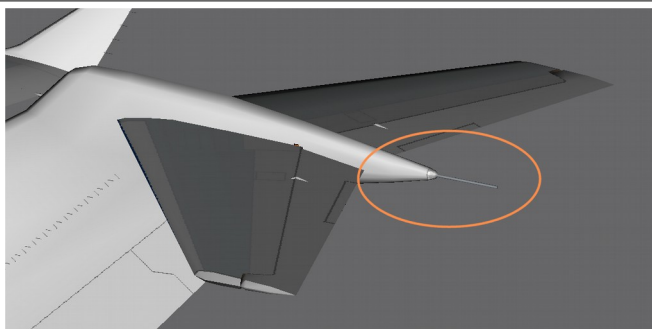
When using 11 , Option type 3 must be “N”(blank)



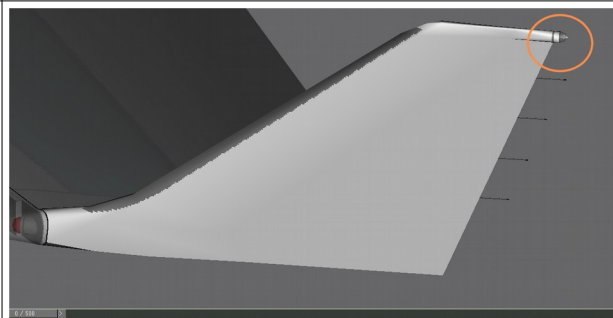
Raisbeck Leading Edge Slat



Raisbeck IGW/HGW TE Flap



Vertical Stabilizer top antenna



Winglet rear Flasher



Option Type 4th letter +Txxx?

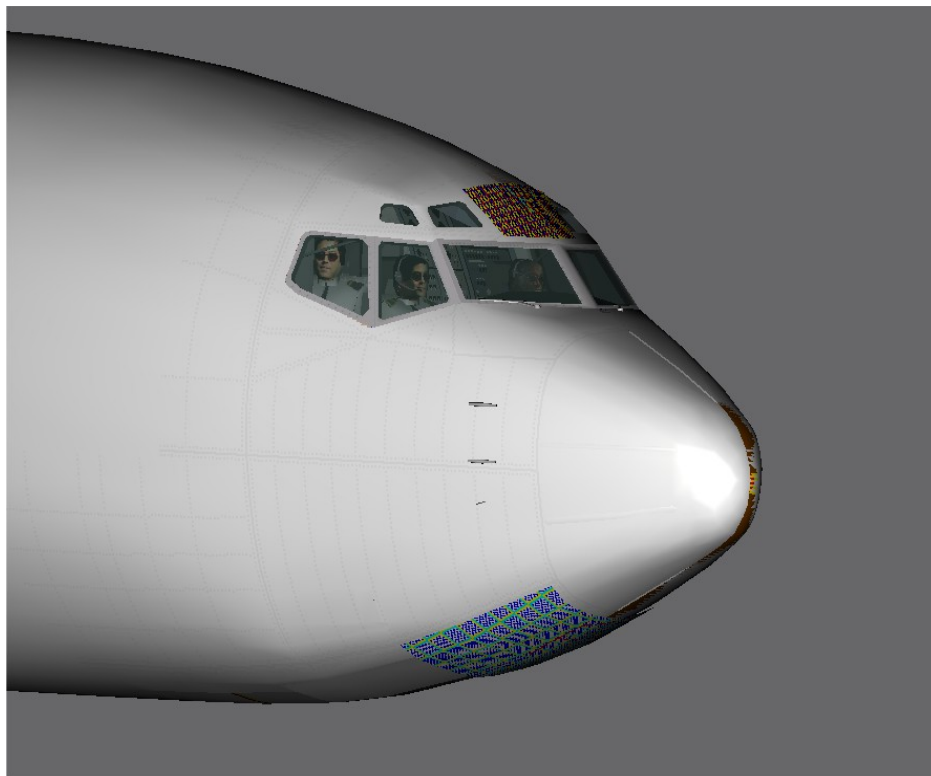
| Num | Letter | 0 | 1 | 2 | 3 | 4 | 5 | 6 | 7 | 8 | 9 | A | B | C | D | E | F |
|-----|----------|---|---|---|---|---|---|---|---|---|---|---|---|---|---|---|---|
| 16 | Reserved | | | | | | | | | Y | Y | Y | Y | Y | Y | Y | Y |
| 15 | Reserved | | | | | Y | Y | Y | Y | | | | | Y | Y | Y | Y |
| 14 | Reserved | | | Y | Y | | | Y | Y | | | Y | Y | | | Y | Y |
| 13 | Reserved | | Y | | Y | | Y | | Y | | Y | | Y | | Y | | Y |



5 Option DECALS

Option DECALS 1st letter +D?x

| Letter | 0 | 1 | 2 | 3 | 4 | 5 | 6 | 7 | 8 | 9 | A | B | C | D | E | F |
|-------------|---|---|---|---|---|---|---|---|---|---|---|---|---|---|---|---|
| Reserved | | | | | | | | | Y | Y | Y | Y | Y | Y | Y | Y |
| Nose bottom | | | | | Y | Y | Y | Y | | | | | Y | Y | Y | Y |
| Reserved | | | Y | Y | | | Y | Y | | | Y | Y | | | Y | Y |
| Window Top | | Y | | Y | | Y | | Y | | Y | | Y | | Y | | Y |



Option DECALS 2nd letter +Dx?

All reserved



TDS 727 Series Configuration Manual



Have fun flying and painting.