

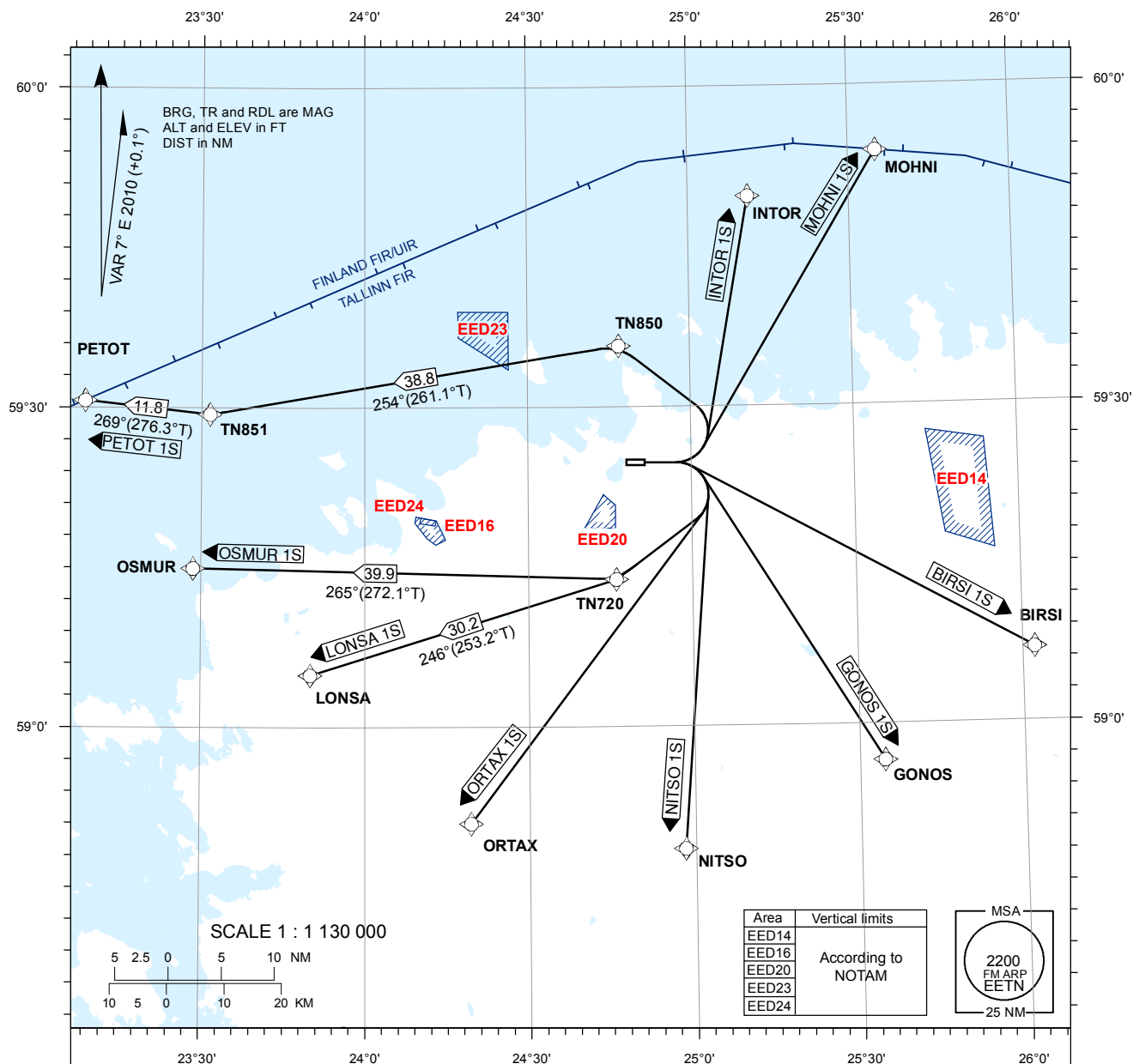
STANDARD DEPARTURE CHART  
INSTRUMENT ( SID ) - ICAO

ATIS 124.875 / TEL: +372 625 8210  
TOWER 120.600  
RADAR 127.900

TRANSITION ALTITUDE  
5000

**LENNART MERI  
TALLINN**

**RNAV (GNSS) SID  
RWY 08**

**RNAV SID RWY 08**

BIRSI 1S GONOS 1S INTOR 1S LONSA 1S MOHNI 1S NITSO 1S ORTAX 1S OSMUR 1S PETOT 1S

**NAV SPECIFICATION**

P-RNAV APPROVAL REQUIRED. OTHERWISE INFORM ATC.

**EN-ROUTE CLEARANCE**

CONTACT TALLINN TWR ON FREQ 120.600 MHZ NOT EARLIER THAN 10 MINUTES PRIOR TO EOB T OR ESTIMATED ENGINE START-UP, ADVISE CALL SIGN, STAND/GATE NUMBER AND IF NOT ABLE TO FOLLOW RNAV SID.

PROC DESCRIPTION AND RNAV-UNABLE PROC INSTRUCTION: REF AD 2.22.

**SQUAWK**

SQUAWK THE ASSIGNED SSR-CODE IMMEDIATELY PRIOR PUSH-BACK OR TAXI.

**INITIAL CLIMB**

CLIMB TO 4000 FT MSL OR ASSIGNED ALTITUDE IF LOWER. CLIMB TO A HIGHER LEVEL ONLY WHEN CLEARED BY ATC. MNM CLIMB GRADIENT 6,6% (400 FT/NM) UP TO 4000 FT MSL. AIRCRAFT UNABLE TO COMPLY SHALL INFORM ATC.

**RADIO CONTACT**

AFTER TAKE-OFF CONTACT TALLINN RADAR FREQ 127.900 MHZ.

CHANGES: EED24