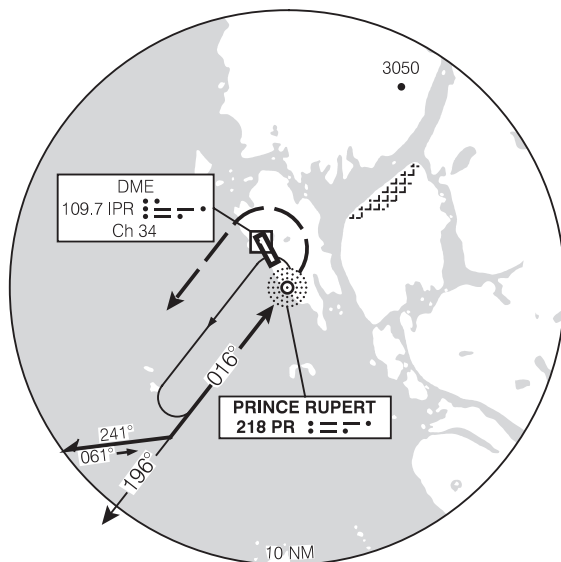
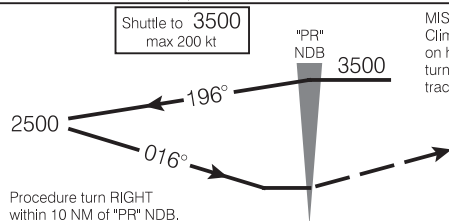


NDB A

AWOS 128.575	ARR/DEP VANCOUVER CENTRE 133.675 284.0	RADIO RUPERT O/T TERRACE RDO (RCO) 122.5 (MF)	ELEV 116
-------------------------------	---	--	-----------------

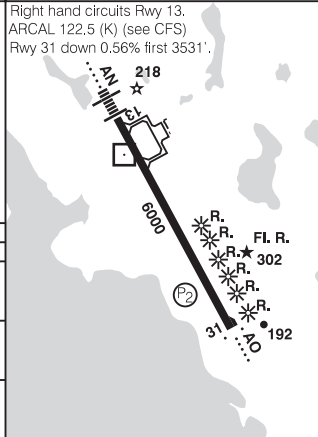
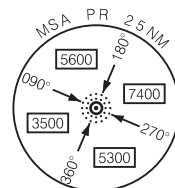
MAP located 1 NM
EAST of airport.

CYPR

SAFE ALT 100 NM **11,100**

MISSED APPROACH
Climbing LEFT turn to **3500**
on heading **196°**. LEFT
turn to "PR" NDB on
track **016°**.

Right hand circuits Rwy 13.
ARCAL 122.5 (K) (see CFS)
Rwy 31 down 0.56% first 3531'.



CATEGORY	A	B	C	D
CIRCLING	1000	(884)	3	

Knots	70	90	110	130	150
Min:Sec					

NDB A

541709N 1302641W

VAR 22°E

PRINCE RUPERT BC
PRINCE RUPERT

NAD83

EFF 3 JUN 10

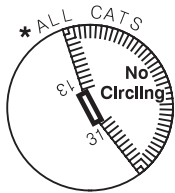
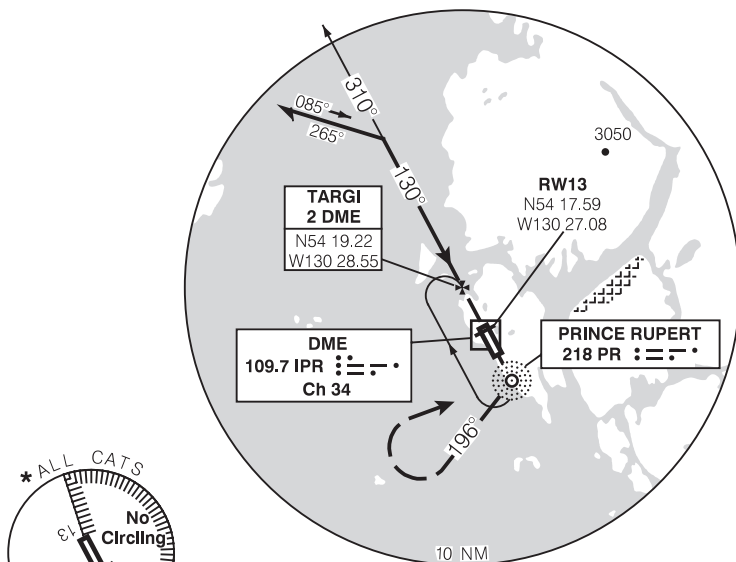
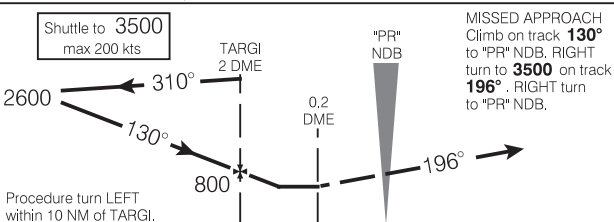
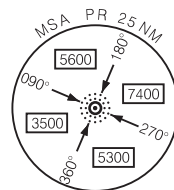
CHANGE: AWOS

NDB/DME RWY 13 (GNSS)

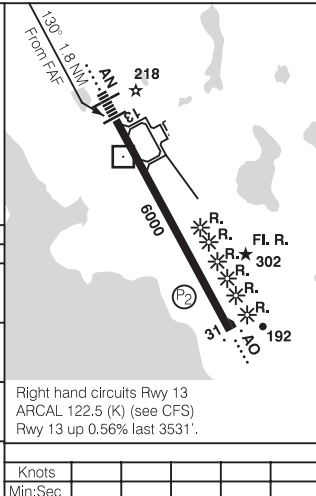
AWOS 128.575	ARR/DEP VANCOUVER CENTRE 133.675 284.0	RADIO RUPERT O/T TERRACE RDO (RCO) 122.5 (MF)	ELEV 116 TDZE 13 95
------------------------	--	---	--------------------------------------

3500 from "PR" NDB
to TARGI 310° 3.8 NM

CYPR

SAFE ALT 100 NM **11,100**

CATEGORY	A	B	C	D
NDB/DME	700	(605)	1 1/4	
* CIRCLING	700 (584) 1 1/4	700 (584) 2	720 (604) 2	



NDB/DME RWY 13 (GNSS)

541709N 1302641W

VAR 22°E

PRINCE RUPERT BC
PRINCE RUPERT

EFF 3 JUN 10

CHANGE: AWOS, minima

NAD83

LOC(BC)/DME RWY 31

AWOS 128.575	ARR/DEP VANCOUVER CENTRE 133.675 284.0	RADIO RUPERT O/T TERRACE RDO (RCO) 122.5 (MF)	ELEV 116
			TDZE 31 116

CYPR

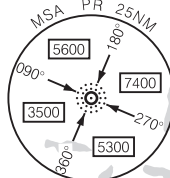
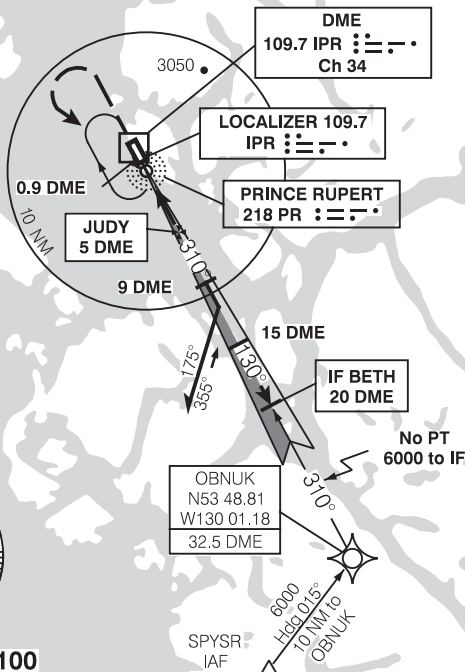
**BACK COURSE
NO GLIDE PATH
IGNORE GLIDE
PATH INDICATIONS**

Localizer reliable only within 20 NM.

Localizer reliable within 10°
either side of centreline.

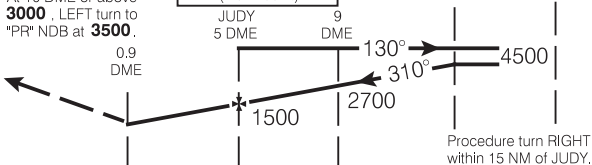
6000 from OBNUK FACF
to BETH IF via 'PR" NDB
track 310° 12.5 NM.

4500 from "PR" NDB
to JUDY 130° 3.1 NM.

SAFE ALT 100 NM **11,100**

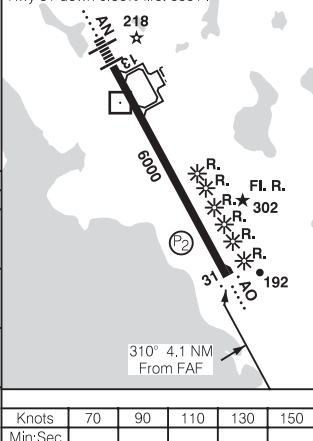
MISSED APPROACH
Climb on track **310°**.
At 10 DME or above
3000, LEFT turn to
"PR" NDB at **3500**.

Shuttle to 4500
inbd 130° to "PR" NDB
(max 200 kt)



Right hand circuits Rwy 13.
ARCAL 122.5 (K) (see CFS)
Rwy 31 down 0.56% first 3531'

	4.1	4.0	6.0	5.0
CATEGORY	A	B	C	D
LOC(BC)/DME	560	(444)	1 1/2	
* CIRCLING	620 (504) 1 1/2	620 (504) 2	720 (604) 2	



LOC(BC)/DME RWY 31

541709N 1302641W

VAR 22°E

PRINCE RUPERT BC
PRINCE RUPERT

EFF 3 JUN 10

CHANGE: AWOS

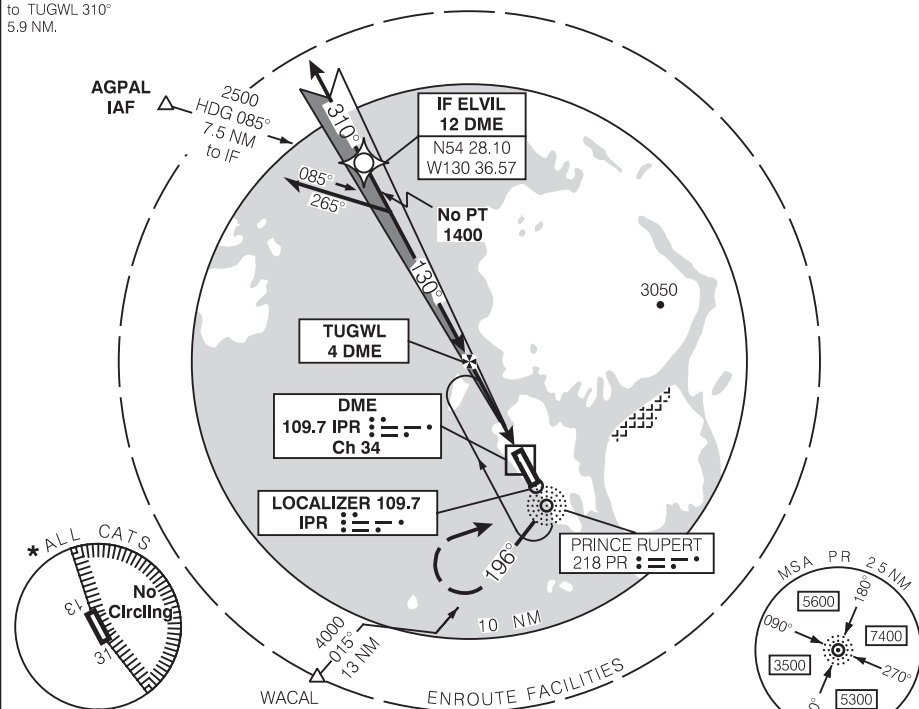
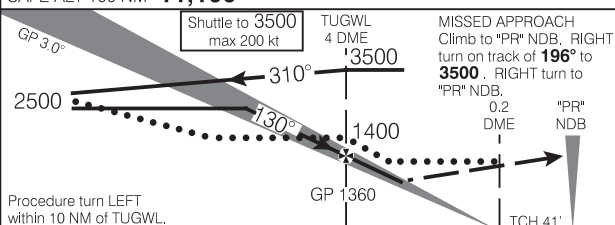
NAD83

ILS/DME RWY 13

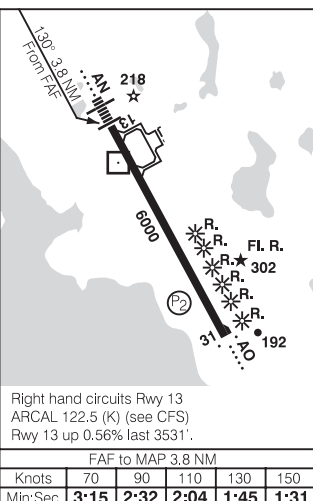
AWOS 128.575	ARR/DEP VANCOUVER CENTRE 133.675 284.0	RADIO RUPERT O/T TERRACE RDO (RCO) 122.5 (MF)	ELEV 116 TDZE 13 95
------------------------	--	---	--------------------------------------

3500 from "PR" NDB
to TUGWL 310°
5.9 NM.

CYPR

SAFE ALT 100 NM **11,100**

CATEGORY	A	B	C	D
ILS/DME	318	(223)	1/2	
LOC/DME	480	(385)	1	
★ CIRCLING	620	(504) 1 1/2	620	720
			(504) 2	(604) 2



Right hand circuits Rwy 13
ARCL 122.5 (K) (see CFS)
Rwy 13 up 0.56% last 3531'.

FAF to MAP 3.8 NM				
Knots	70	90	110	130
Min:Sec	3:15	2:32	2:04	1:45
			1:31	

ILS/DME RWY 13

541709N 1302641W

VAR 22°E

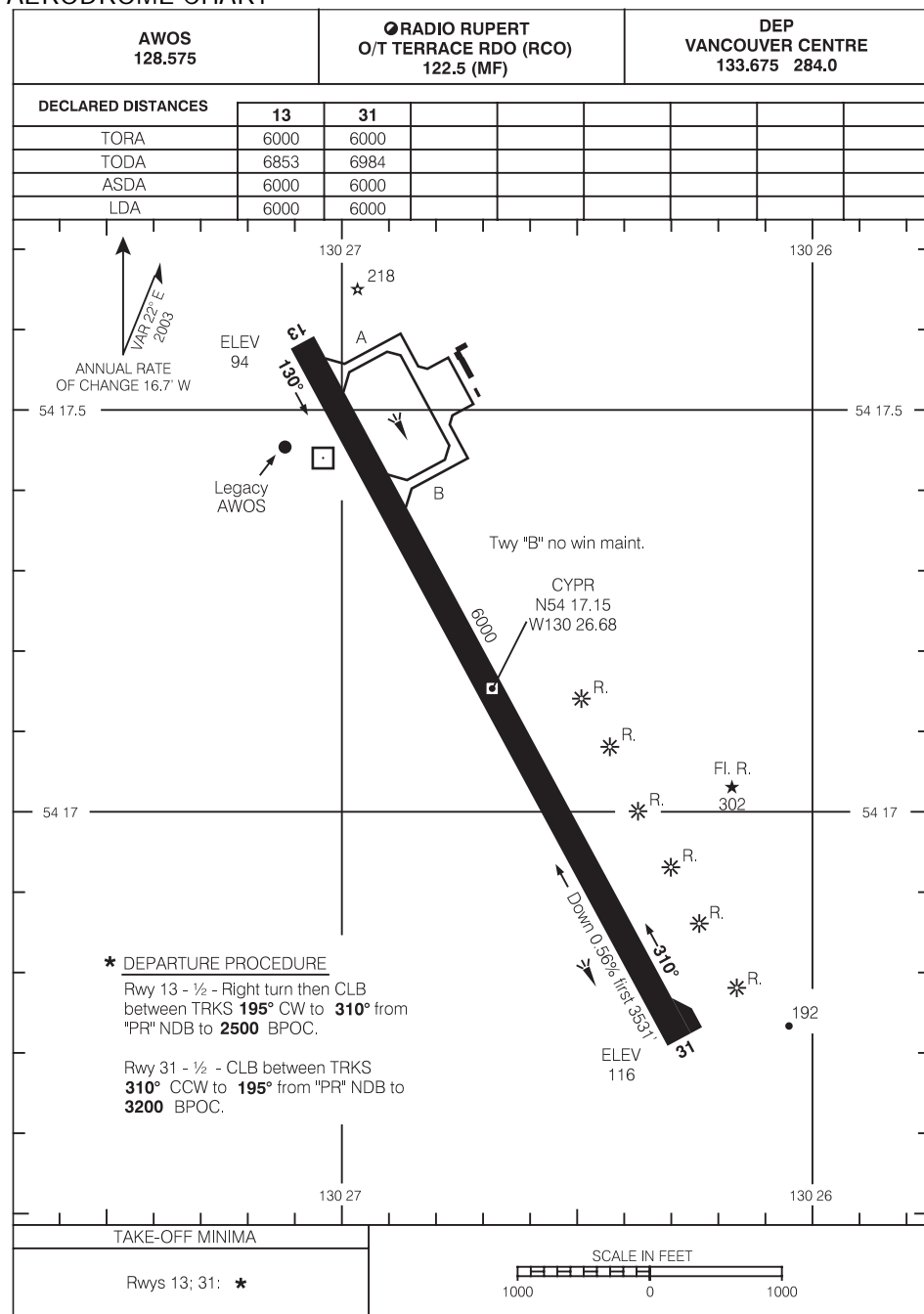
PRINCE RUPERT BC
PRINCE RUPERT

EFF 5 MAY 11

CHANGE: Editorial

NAD83

AERODROME CHART



AERODROME CHART