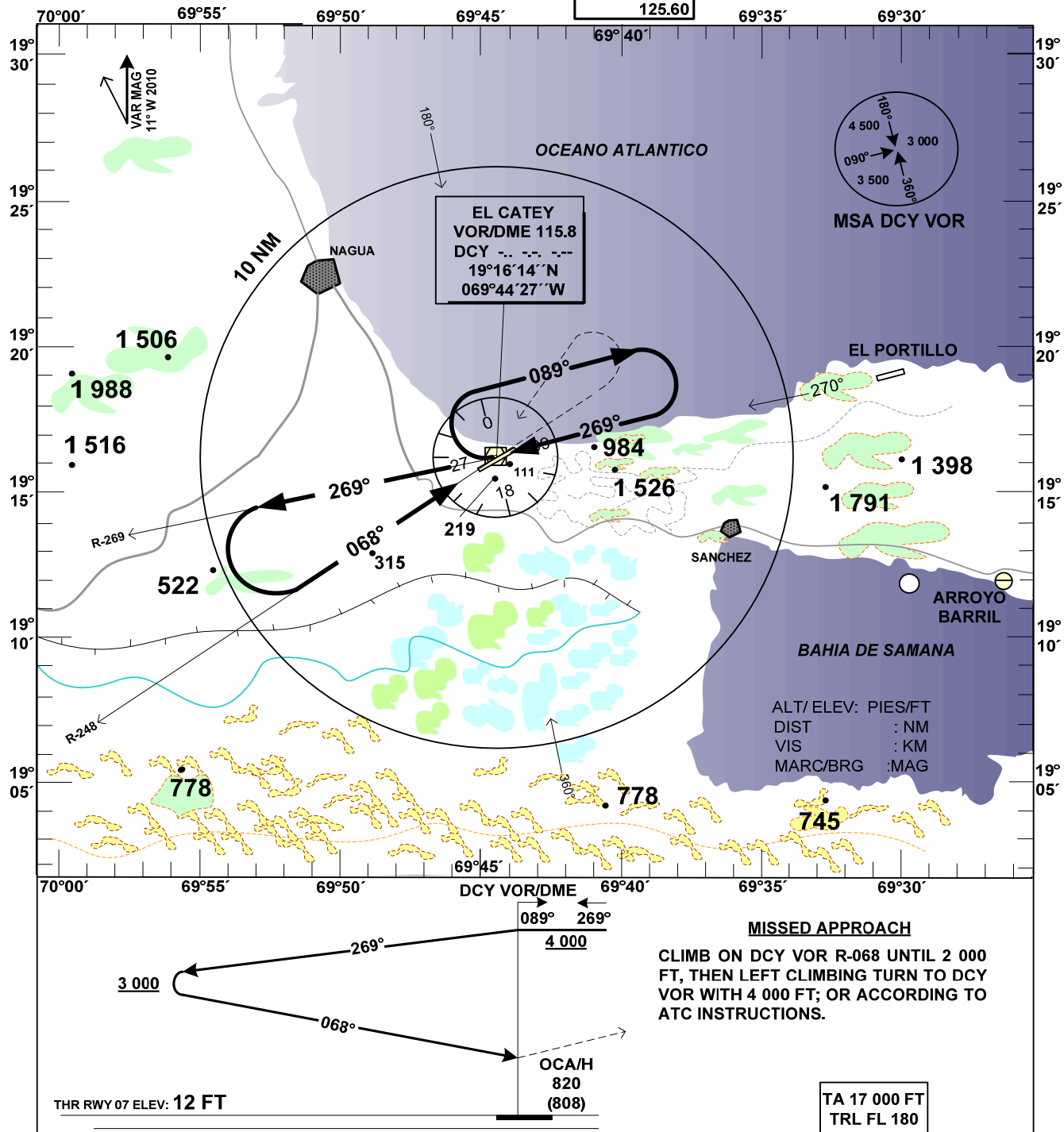


INSTRUMENT  
APPROACH CHART  
IACAD ELEV  
12 FT

APP	119.95
TWR	118.35
122.20	121.70
ACC	124.30
	125.60

SAMANA  
EL CATEY INT'L  
VOR RWY 07

## OCA/H, CEILING AND VISIBILITY MINIMUMS: TAKE-OFF AND LANDING

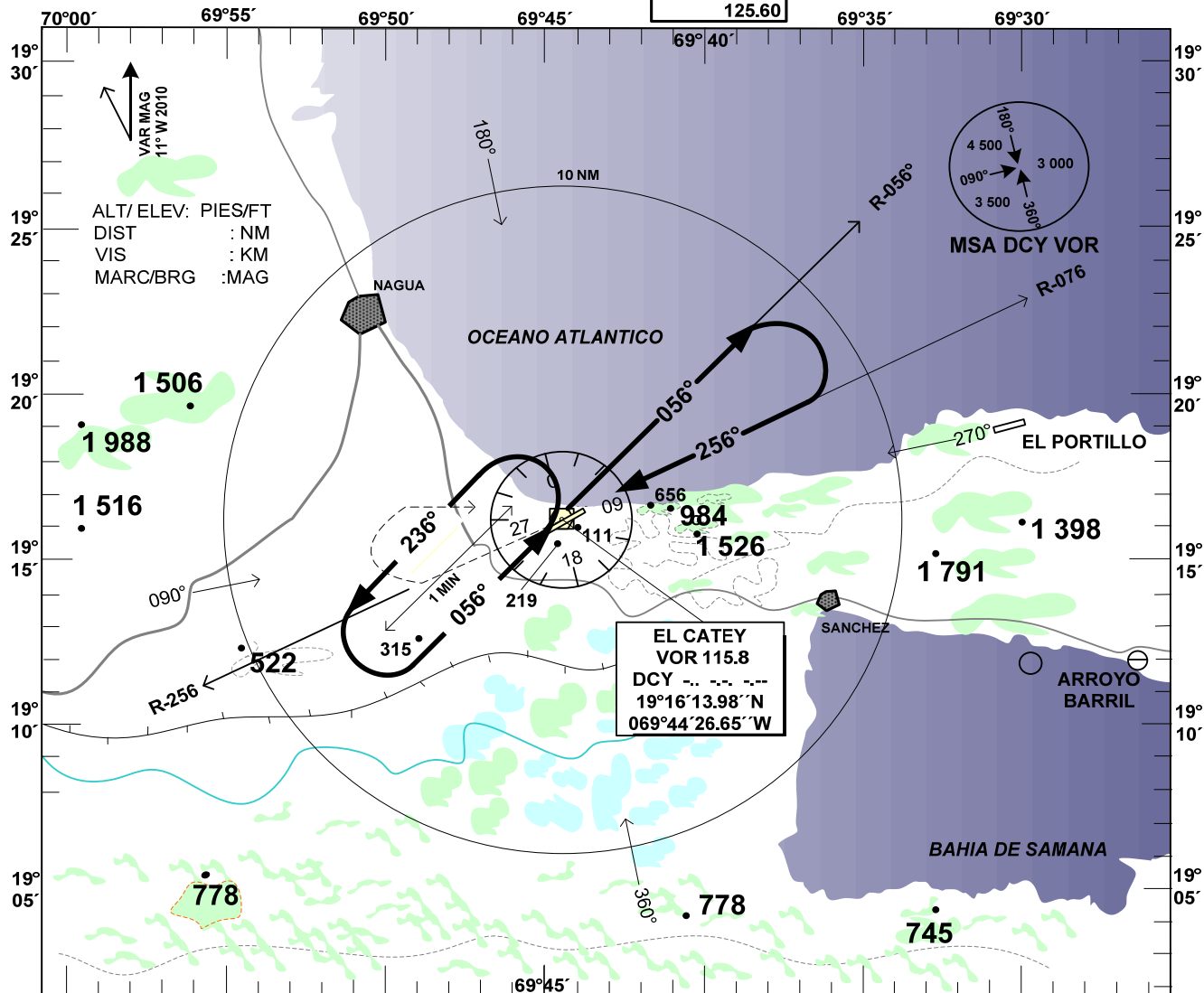
CATEGORY	A	B	C	D
STRAIGHT-IN RWY 07	820 (808) 900 2.0		820 (808) 900 3.6	820 (808) 900 4.0
CIRCLING RWY 25	820(808) 900 2.0	1 000(988) 1000 2.8	2 100 (2088) 2100 4.6	

**INSTRUMENT  
APPROACH CHART  
IAC**

**AP ELEV  
12 FT**

APP	119.95
TWR	118.35
122.20	121.70
ACC	124.30
	125.60

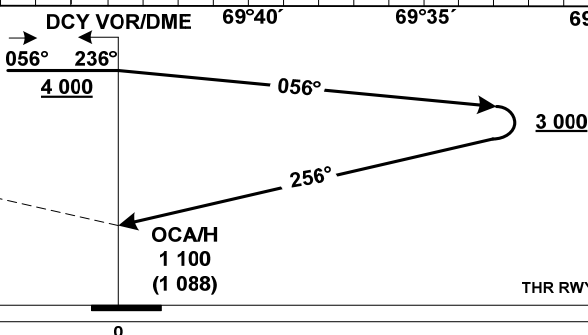
**SAMANA  
EL CATEY INT'L  
VOR RWY 25**



**MISSED APPROACH**

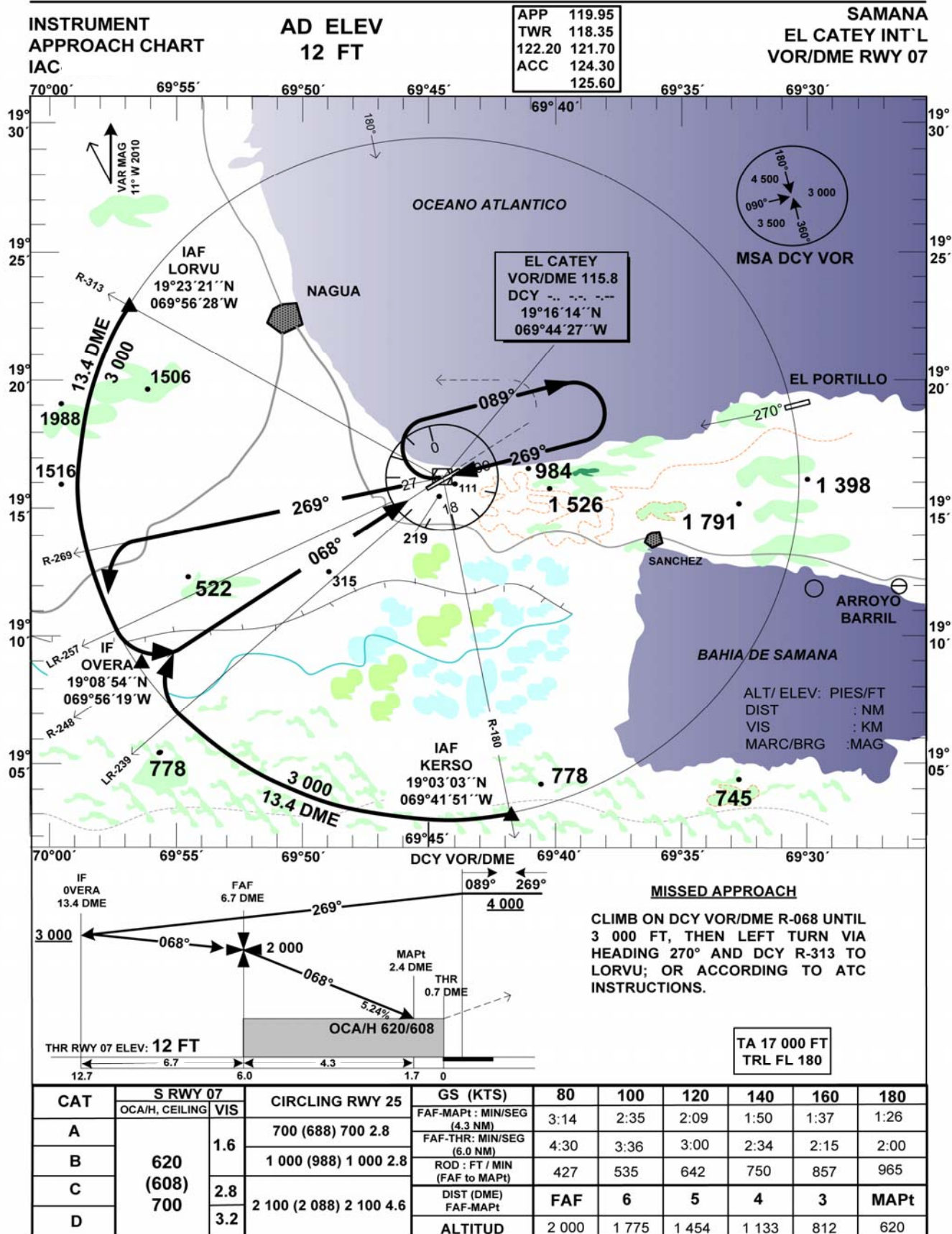
CLIMB ON DCY VOR R-256 UNTIL 3 000 FT,  
THEN RIGHT CLIMBING TURN TO 4 000 FT  
TO DCY VOR HOLDING PATTERN; OR  
ACCORDING TO ATC INSTRUCTIONS.

TA 17 000 FT  
TRL FL 180



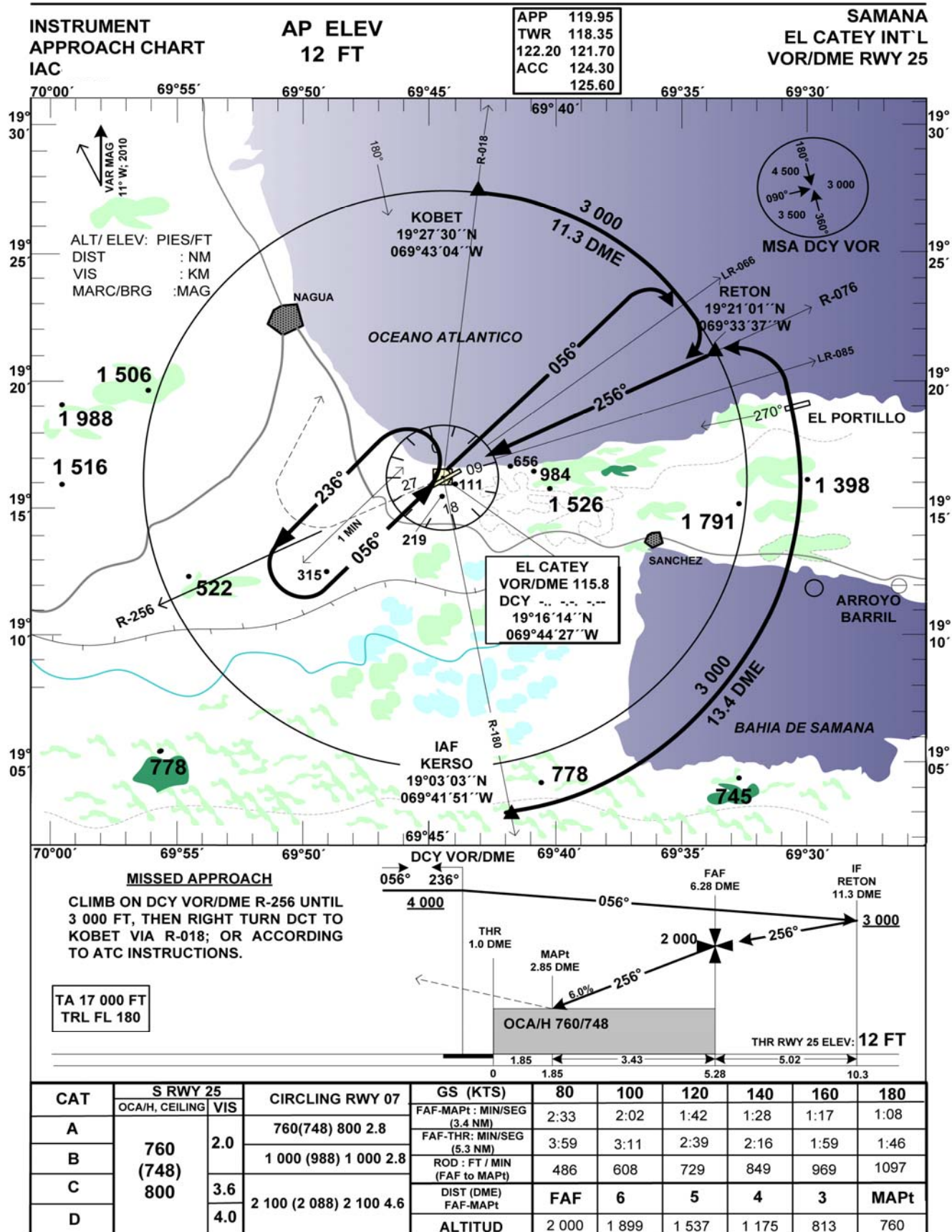
**OCA/H, CEILING AND VISIBILITY MINIMUMS: TAKE-OFF AND LANDING**

CATEGORY	A	B	C	D
STRAIGHT-IN RWY 25	1 100(1088) 1 100 2.8		1 100(1 088) 1 100 4.8	1 100(1088) 1 100 5.2
CIRCLING RWY 07	1 100(1088) 1 100 3.5		2 100 (2088) 2 100 5.2	



MDCY VOR/DME 07 PROCEDURE DATA					
PUNTO DE REF/ TERMINAL FIX		GEO. COOD	MARCACION (TRUE/MAG)	DIST. NM	GRAD. DESC
IAF:	LORVU	19°23'21.15''N 069°56'27.99''W	13.4 DME ARC	15.19	
IAF:	KERSO	19°03'02.75''N 069°41'51.31''W	13.4 DME ARC	15.90	
IF:	OVERA	19°08'54.02''N 069°56'18.90''W	057.08°/068.00°	6.7	
FAF:	6.73 DME		057.08°/068.00°	6.00	5.24 %; 3.0°
MAPt:	2.4 DME DCY	19°14'55.24''N 069°46'34.29''W	057.08°/068.00°	1.7 THR 07	
TP					
MAHF:	DCY VOR	19°16'13.98''N 069°44'26.65''W	OB: 078.08°/089.00° IB: 258.08°/269.00°		

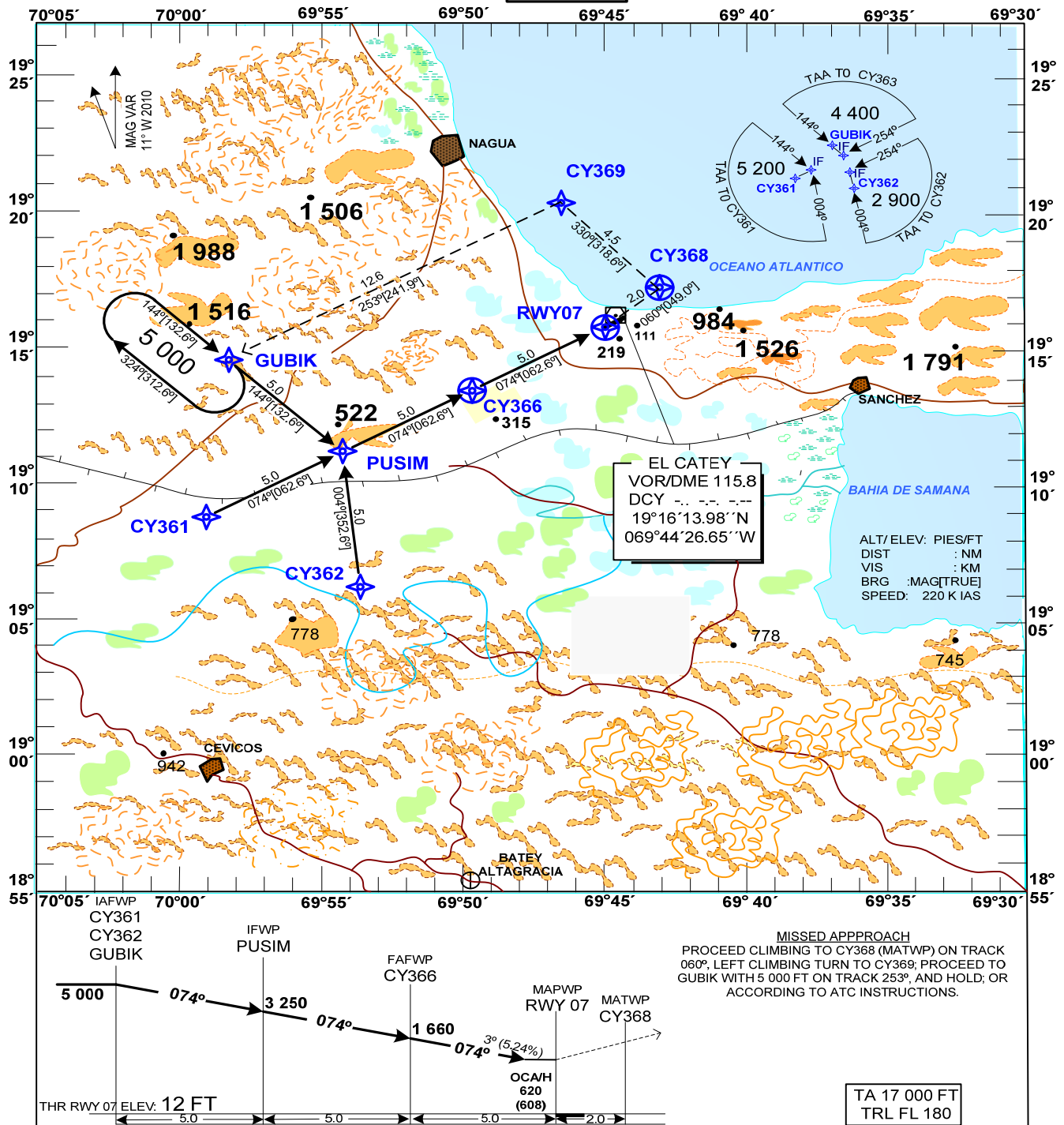




MDCY VOR/DME 25 PROCEDURE DATA					
PUNTO DE REF/ TERMINAL FIX		GEO. COOD	MARCACION (TRUE/MAG)	DIST. NM	GRAD. DESC
IAF:	KOBET	19°27'30.30''N 069°43'04.14''W	11.3 DME ARC	11.43	
IAF:	KERSO	19°03'02.75''N 069°41'51.31''W	13.4 DME ARC	24.31	
IF:	RETON	19°21'01.30''N 069°33'36.78''W	245.08°/256.00°	5.02	
FAF:	6.28DME		245.08°/256.00°	5.28	5.24 %; 3.0°
MAPt:	2.85 DME DCY	19°17'26.50''N 069°41'42.81''W	245.08°/256.00°	1.85 THR 25	
TP					
MAHF:	DCY VOR	19°16'13.98''N 069°44'26.65''W	OB: 225.08°/236.00° IB: 045.08°/056.00°		

INSTRUMENT  
APPROACH  
CHARTAD ELEV  
12 FT

APP	119.95
TWR	118.35
122.20	121.70
ACC	124.30
	125.60

SAMANA  
EL CATEY INT'L  
RNAV (VOR/DME, GNSS) RWY 07

SAMANA  
EL CATEY INT'L

WAY POINT LIST

**RNAV (VOR/DME, GNSS) RWY 07**

CY361 (IAFWPc)	19° 08' 51.598"N	069° 59' 02.728"W
CY362 (IAFWPR)	19° 06' 11.842"N	069° 53' 40.720"W
GUBIK (IAFWPL)	19° 14' 34.292"N	069° 58' 14.916"W
PUSIM (IFWP)	19° 11' 10.489"N	069° 54' 21.523"W
CY366 (FAFWP)	19° 13' 29.260"N	069° 49' 40.187"W
RWY07 (MAPWP)	19° 15' 47.910"N	069° 44' 58.720"W
CY368 (MATWP)	19° 17' 06.932"N	069° 43' 22.978"W
CY369	19° 20' 31.458"N	069° 46' 30.305"W