

General Information

Location: Isparta Tur
IATA Code: ISE
Lat/Long: N37° 51.3' E030° 22.0'
Elevation: 2835 ft

Airport Use: Public
Magnetic Variation: 4.9°E

Fuel Types: 100 Octane (LL), Jet A-1
Customs: Yes
Airport Type: IFR
Landing Fee: No
Control Tower: Yes
Jet Start Unit: No
LLWS Alert: No
Beacon: Yes

Sunrise: 0244 Z
Sunset: 1723 Z,

Runway Information

Runway: 05
Length x Width: 9843 ft x 148 ft
Surface Type: concrete
TDZ-Elev: 2827 ft
Lighting: Edge, ALS
Stopway: 197 ft

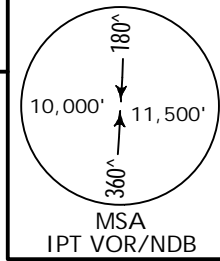
Runway: 23
Length x Width: 9843 ft x 148 ft
Surface Type: concrete
TDZ-Elev: 2835 ft
Lighting: Edge
Stopway: 197 ft

Communication Information

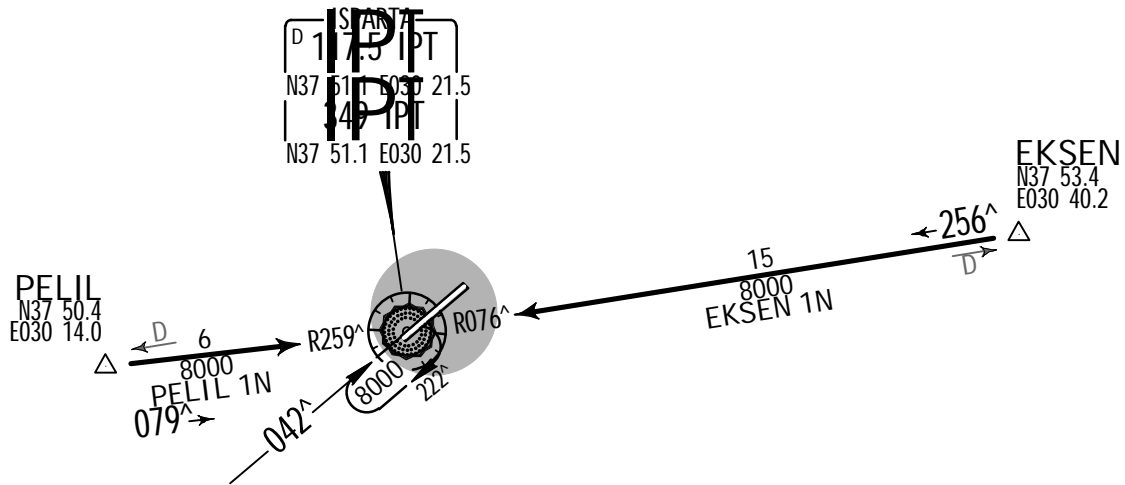
Isparta Tower 119.2
Isparta Tower 118.65
Isparta Tower 24.102 Military
Isparta Ground Control 121.7
Antalya Approach Control 122.05

Apt Elev
2835'

Alt Set: hPa Trans level: By ATC Trans alt: 12000'



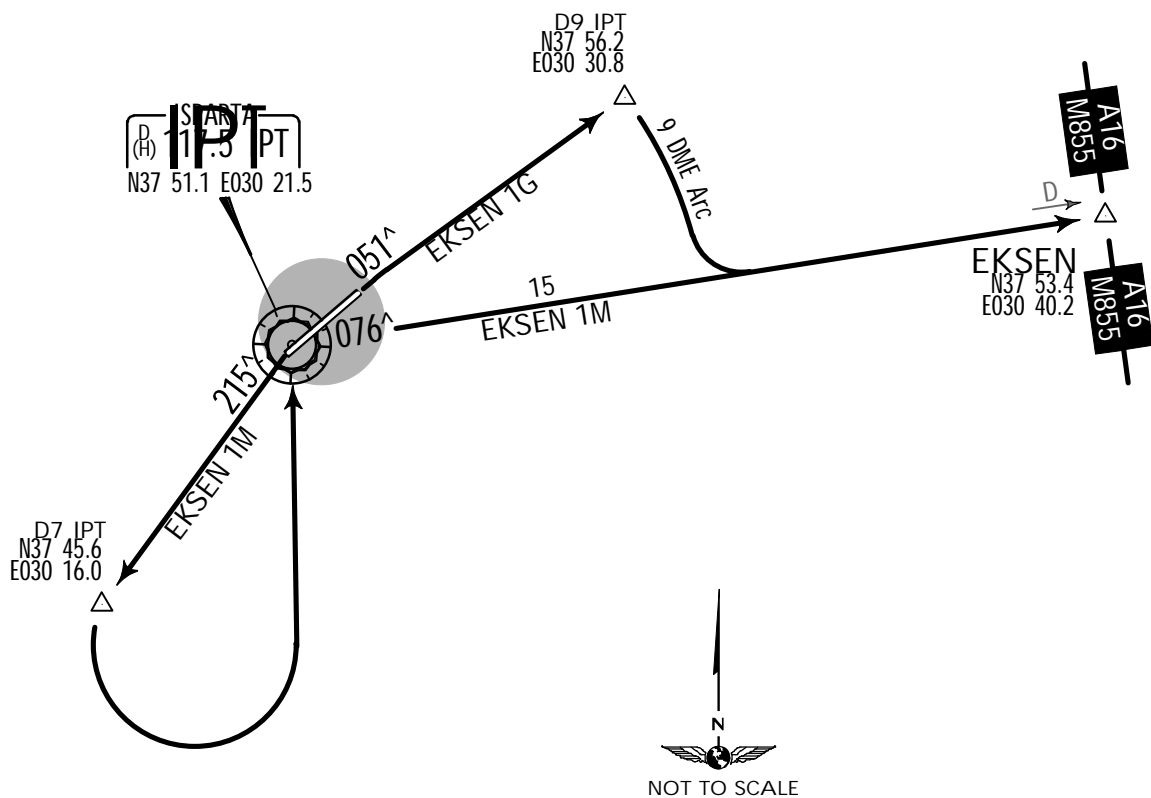
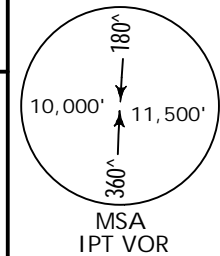
EKSEN 1N [EKSE1N]
PELIL 1N [PELI1N]
ARRIVALS
BASED ON IPT VOR



Apt Elev
2835'

Trans level: By ATC Trans alt: 12000'

EKSEN ONE GOLF (EKSEN 1G) [EKSE1G]
 EKSEN ONE MIKE (EKSEN 1M) [EKSE1M]
 RWYS 05, 23 DEPARTURES
 BASED ON IPT VOR



These SIDs require a minimum climb gradient
 of
 304' per NM (5%) until passing 11000'.

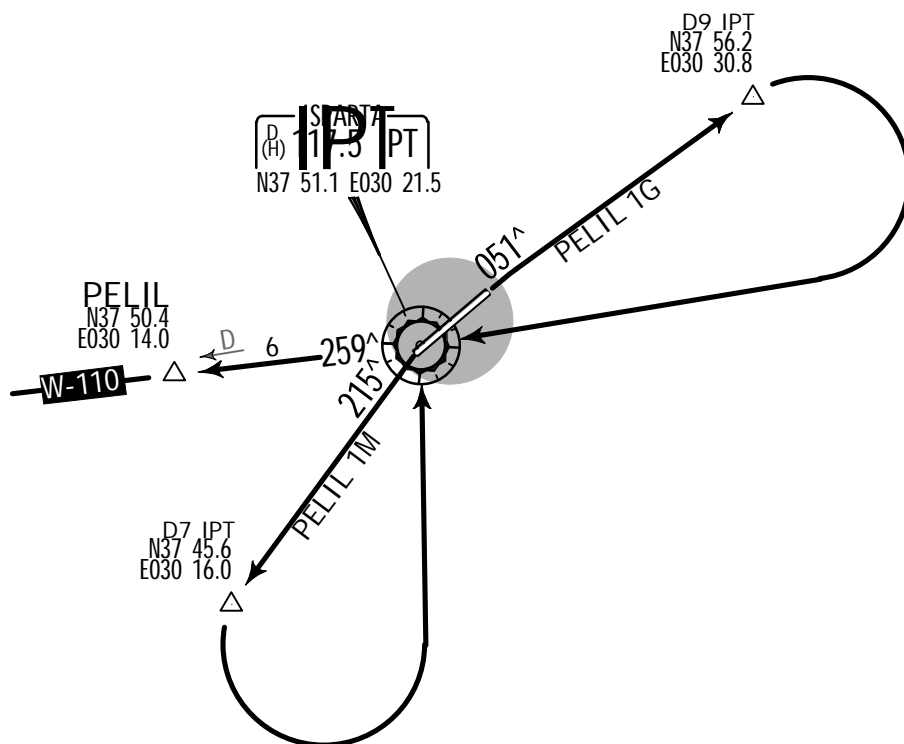
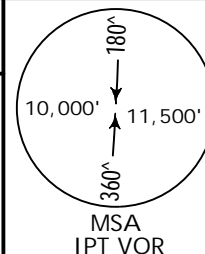
Gnd speed-KT	75	100	150	200	250	300
304' per NM	380	506	760	1013	1266	1519

SID	RWY	ROUTING
EKSEN 1G	05	Climb on IPT R-051 to D9 IPT, turn RIGHT, along IPT 9 DME arc, intercept IPT R-076 to EKSEN, join airways A-16, M-855.
EKSEN 1M	23	Climb on IPT R-215 to D7 IPT, turn LEFT to IPT, IPT R-076 to EKSEN, join airways A-16, M-855.

Apt Elev
2835'

Trans level: By ATC Trans alt: 12000'

PELIL ONE GOLF (PELIL 1G) [PELI1G]
 PELIL ONE MIKE (PELIL 1M) [PELI1M]
 RWYS 05, 23 DEPARTURES
 BASED ON IPT VOR



These SIDs require a minimum climb gradient
 of
 304' per NM (5%) until passing 9000'.

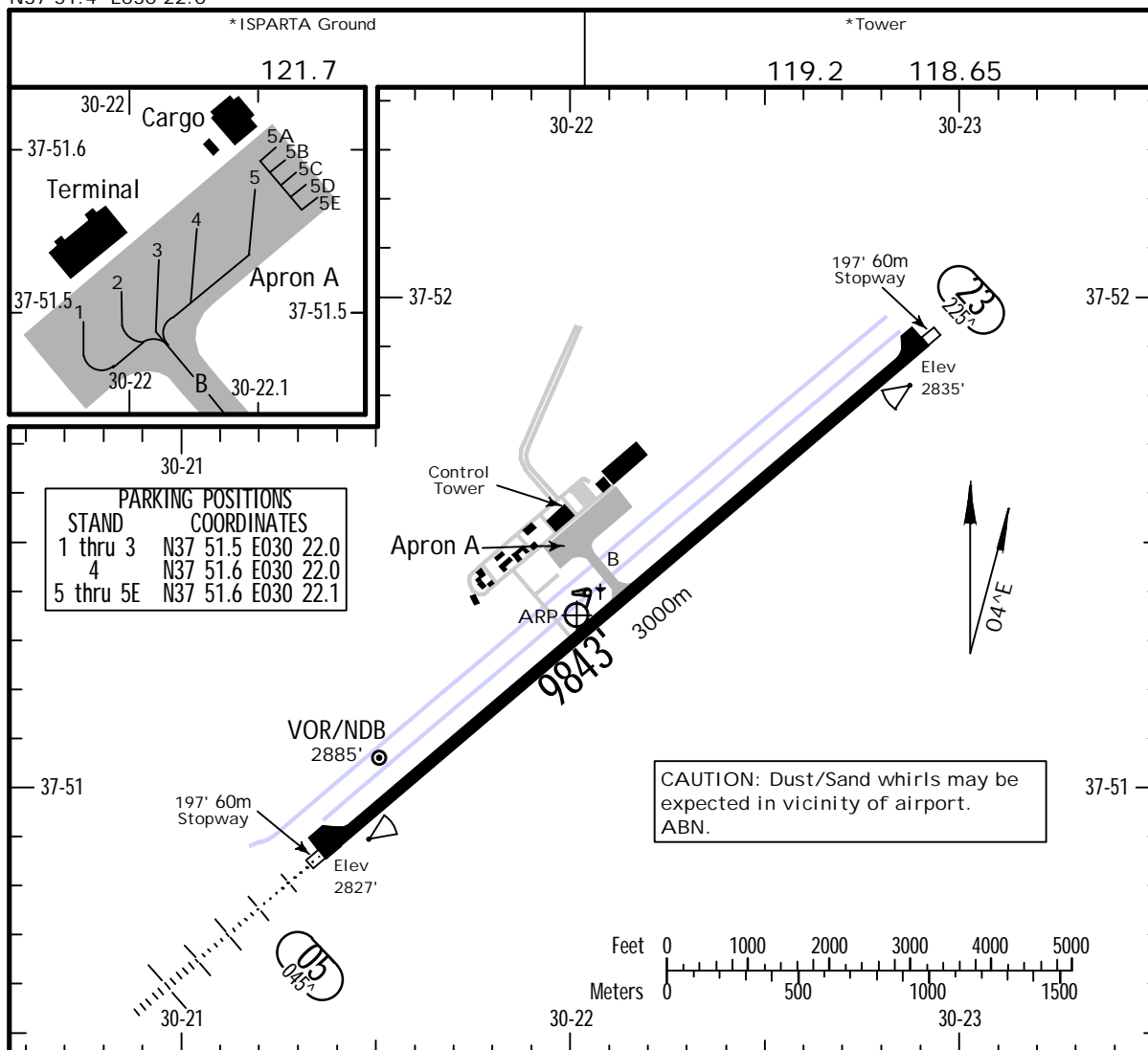
Gnd speed-KT	75	100	150	200	250	300
304' per NM	380	506	760	1013	1266	1519

SID	RWY	ROUTING
PELIL 1G	05	Climb on IPT R-051 to D9 IPT, turn RIGHT to IPT, IPT R-259 to PELIL, join airway W-110.
PELIL 1M	23	Climb on IPT R-215 to D7 IPT, turn LEFT to IPT, IPT R-259 to PELIL, join airway W-110.

LIFC/ISE
Apt Elev 2835'
N37 51.4 E030 22.0

JEPPESEN
17 MAY 13 (10-9)

ISPARTA, TURKEY
SULEYMAN DEMIREL



ADDITIONAL RUNWAY INFORMATION

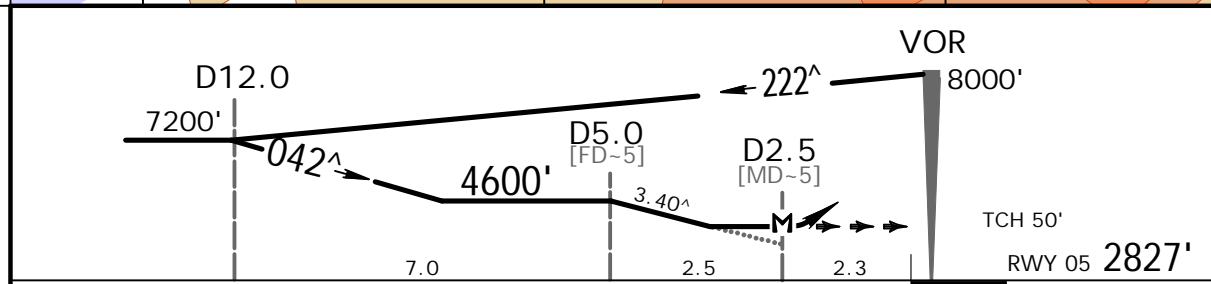
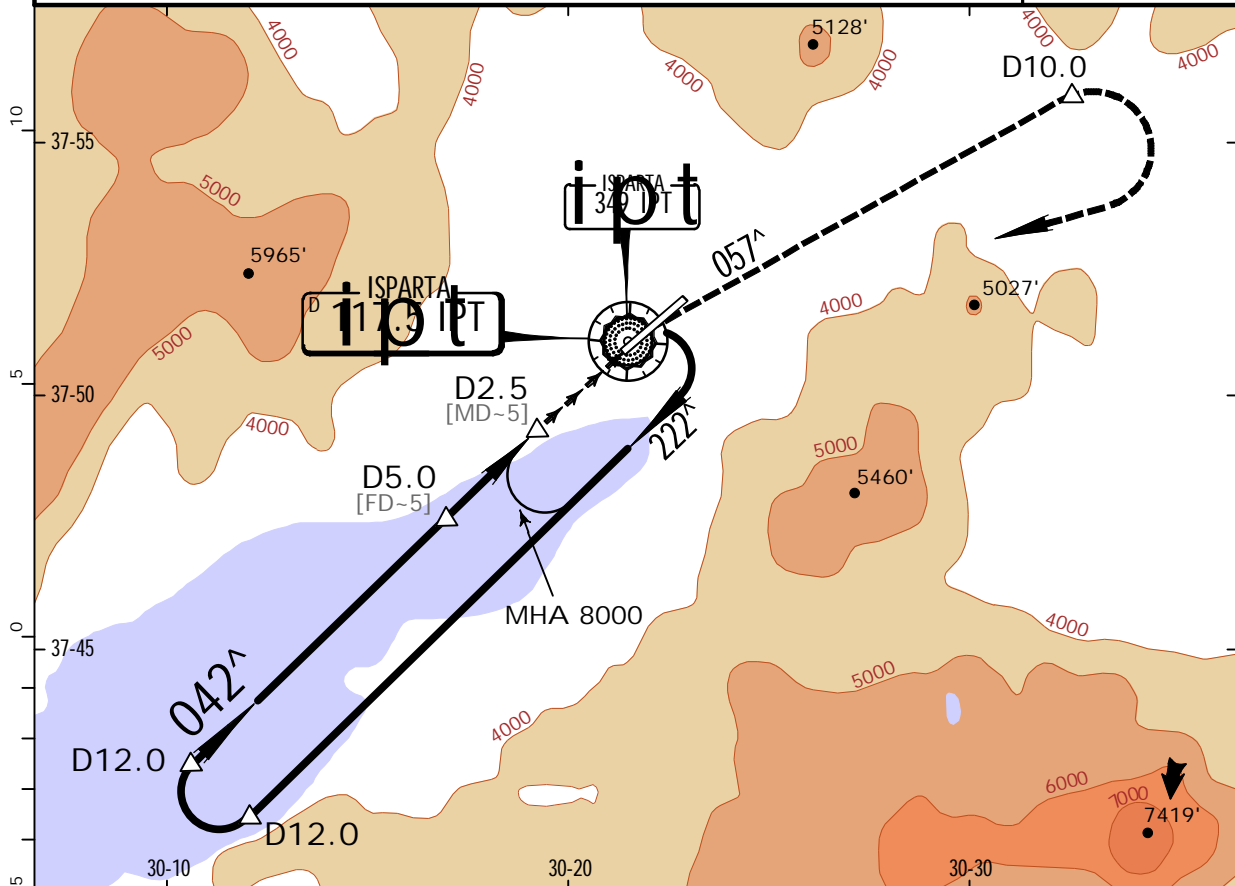
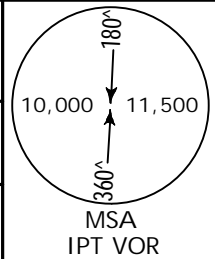
ADDITIONAL RUNWAY INFORMATION					USABLE LENGTHS			
RWY					LANDING BEYOND		TAKE-OFF	WIDTH
					Threshold	Glide Slope		
05	HIRL (60m)	HIALS	PAPI (angle 3.0°)	RVR				148'
23	HIRL (60m)		PAPI (angle 3.0°)	RVR				45m

Standard.

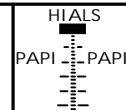
TAKE-OFF

	RCLM (DAY only) or RL	NIL (DAY only)
A		
B		
C	400m	500m
D		

ANTALYA Approach		*ISPARTA Tower		*Ground
122.05	128.3	119.2	118.65	121.7
VOR IPT 117.5	Final Apch Crs 042^	Minimum Alt D5.0 4600' (1773')	MDA(H) 3750' (923')	Apt Elev 2835' RWY 2827'
MISSED APCH: Climb on R-057. At 6000', but not later than D10.0 climbing turn RIGHT to VOR to 8000' and hold.				
Alt Set: hPa		Rwy Elev: 99 hPa		Trans level: By ATC
1. CAUTION: Dust/Sand whirls may be expected in the vicinity of airport.		Trans alt: 12000'		
2. Racetrack restricted to MAX 185 KT.				



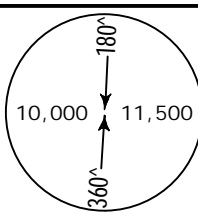
Gnd speed-Kts	70	90	100	120	140	160
Descent Angle	3.40^	421	541	602	722	842
MAP at D2.5						

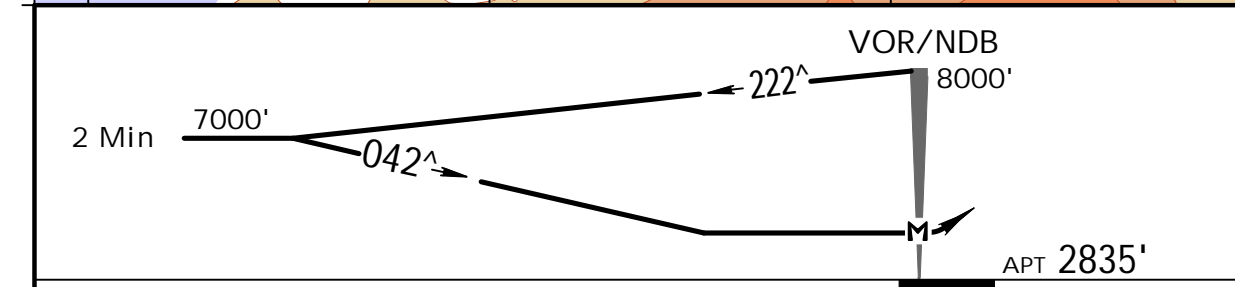
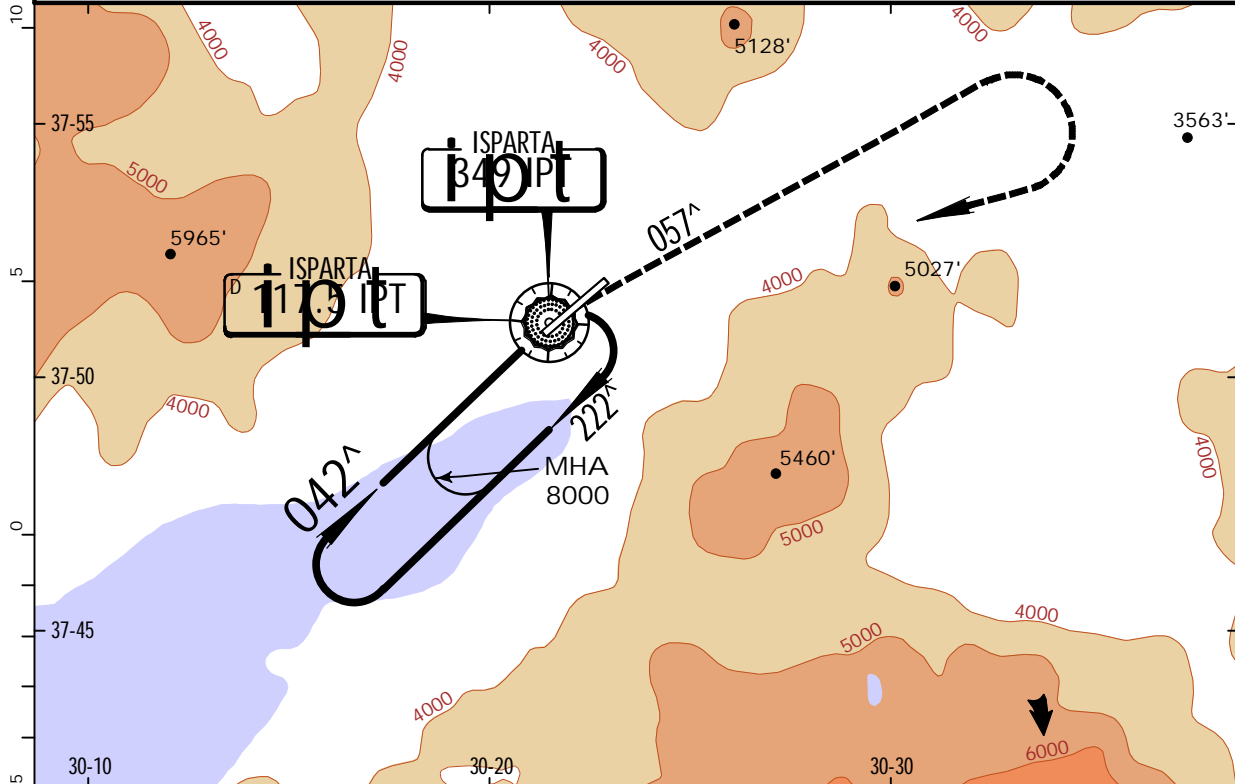



6000'	IPT
via 117.5	R-057

Standard.		STRAIGHT-IN LANDING RWY 05		CIRCLE-TO-LAND	
MDA(H) 3750' (923')		ALS out		Max Kts	
A	3600m	4300m	100	MDA(H)	VIS
B			135	4200' (1365')	5000m
C	3800m	4500m	180	5450' (2615')	5000m
D			205	5900' (3065')	5000m

BRIEFING STRIP

ANTALYA Approach		*ISPARTA Tower		*Ground	
122.05 128.3		119.2 118.65		121.7	
VOR IPT 117.5	Final Apch Crs 042^	Minimum Alt No FAF	MDA(H) Refer to Minimums	Apt Elev 2835'	
NDB IPT 349					
MISSED APCH: Climb on R-057^/ 057^ from NDB to 6000' to 10.0 NM from VOR/NDB, then turn RIGHT to cross VOR/NDB at 8000' and hold.					MSA IPT VOR/NDB
Alt Set: hPa		Apt Elev: 100 hPa		Trans level: By ATC	
1. CAUTION: Dust/Sand whirls may be expected in the vicinity of airport.					
2. Racetrack restricted to MAX 185 KT.					
Trans alt: 12000'					



						Lighting - Refer to Airport Chart	6000'	IPT	057^
							 RT	on 117.5	or from IPT
								R-057	349
MAP at VOR/NDB									

Standard.				STRAIGHT-IN LANDING		CIRCLE-TO-LAND	
PANS OPS	A	NOT AUTHORIZED			Max Kts	MDA(H)	VIS
	B				100	4200' (1365')	5000m
	C				135		
	D				180	5450' (2615')	5000m
					205	5900' (3065')	5000m