

## Terminal Chart Change Notices

<b>Type</b>	Terminal
<b>Effectivity</b>	Temporary
<b>Begin Date</b>	Immediately
<b>End Date</b>	Until Further Notice
(11-1, 11-2) Ufn IAPs ILS Z and ILS Y Rwy 04 suspended.	

VAGD

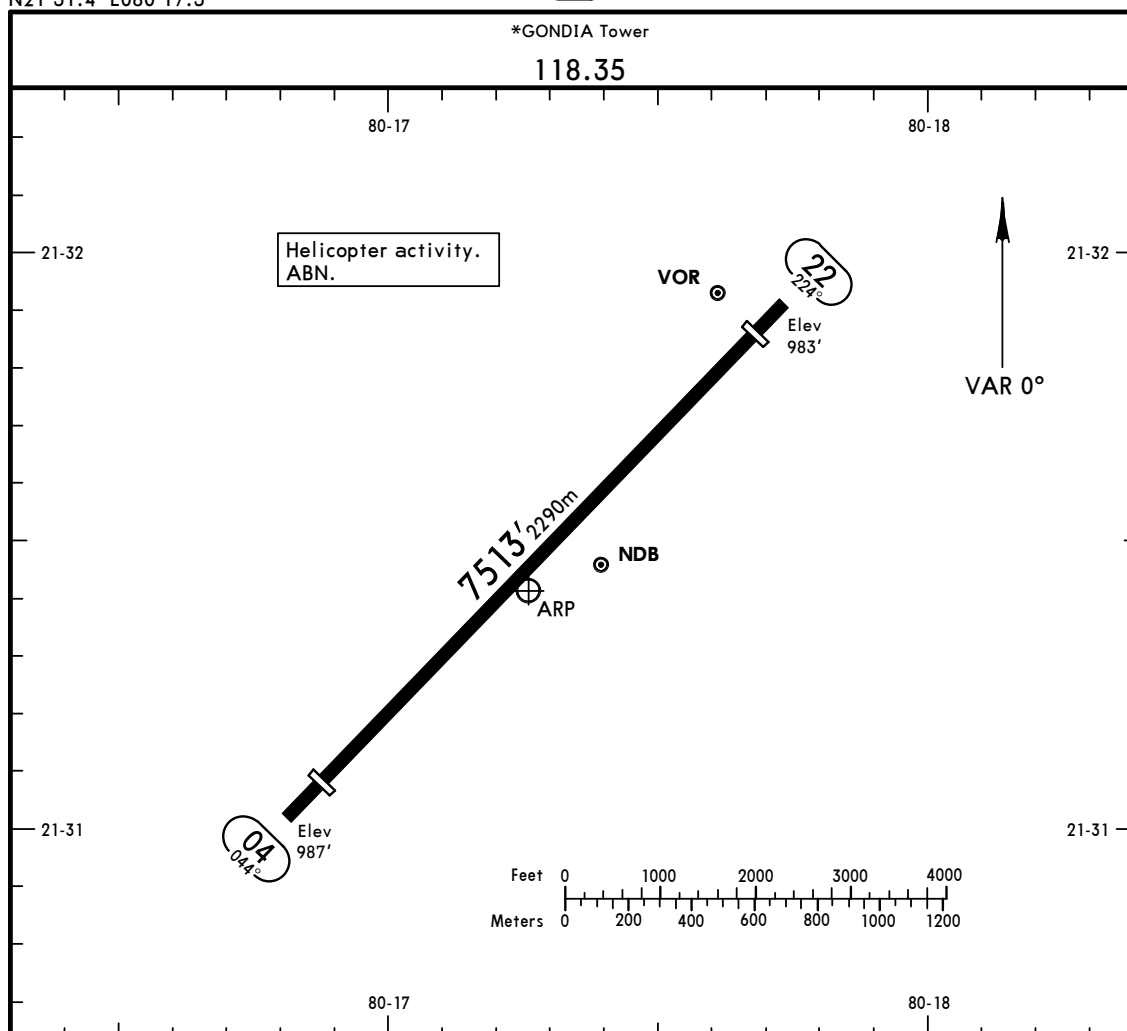
Apt Elev **987'**  
N21 31.4 E080 17.3

JEPPESSEN

31 JUL 15 (10-9)

GONDIA, INDIA

GONDIA



## ADDITIONAL RUNWAY INFORMATION

			ADDITIONAL RUNWAY INFORMATION			USABLE LENGTHS		TAKE-OFF	WIDTH
			LANDING BEYOND						
RWY			Threshold	Glide Slope					
04			7005'2135m	5851'1783m					148'
22	RL	PAPI (angle 3.0°)	7070'2155m						45m

## Standard/DGCA

## TAKE-OFF

	LVP must be on force	Adequate Visual Reference (DAY only)	
		DAY: RL or RCLM NIGHT: RL	DAY: RL or RCLM NIGHT: RL
A			
B	300m	400m	500m
C			
D	NOT APPLICABLE		

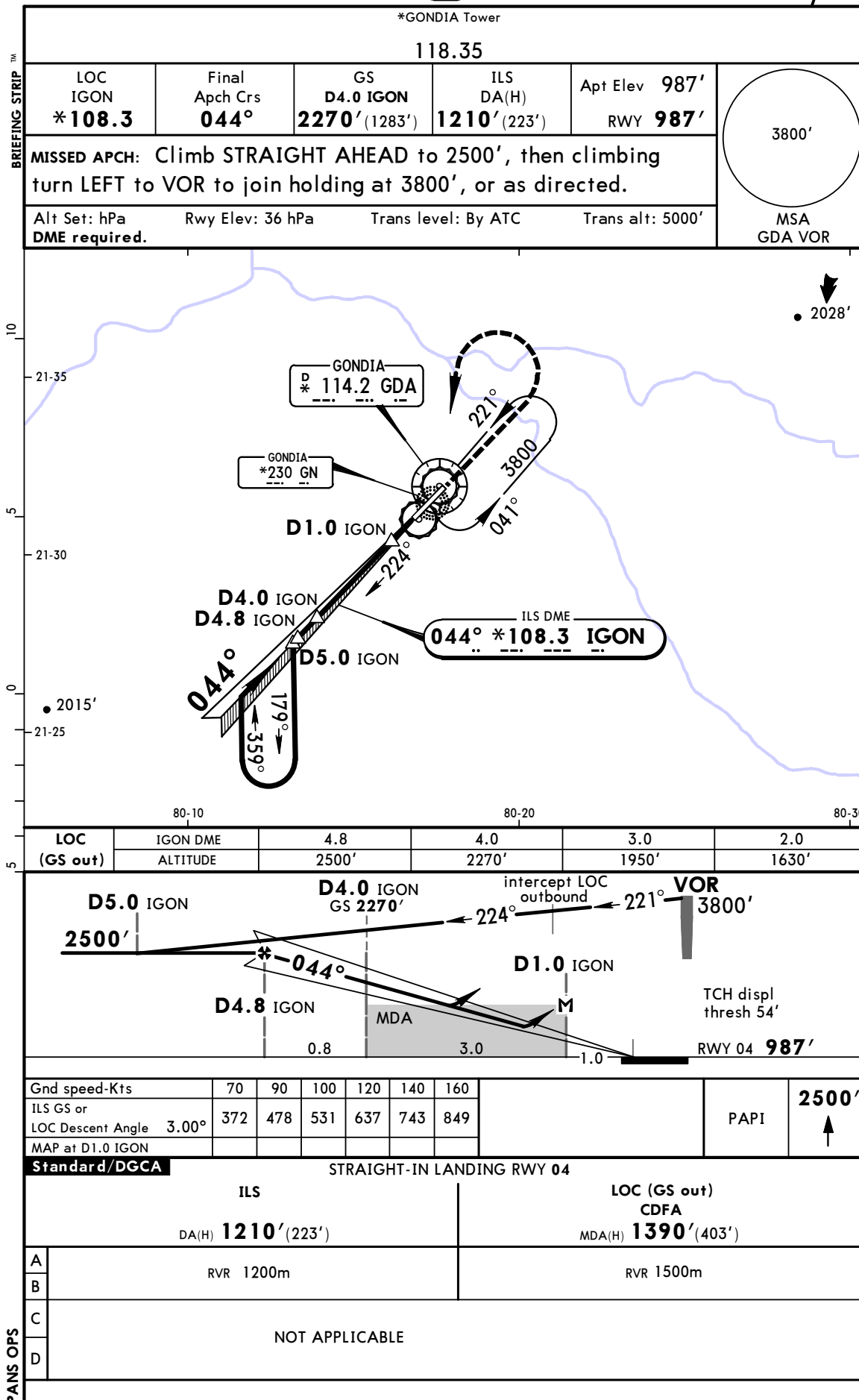
CHANGES: Enhanced accuracy.

© JEPPESSEN, 2008, 2015. ALL RIGHTS RESERVED.

VAGD  
GONDIA

JEPPESSEN  
31 JUL 15 **11-1** CAT A & B

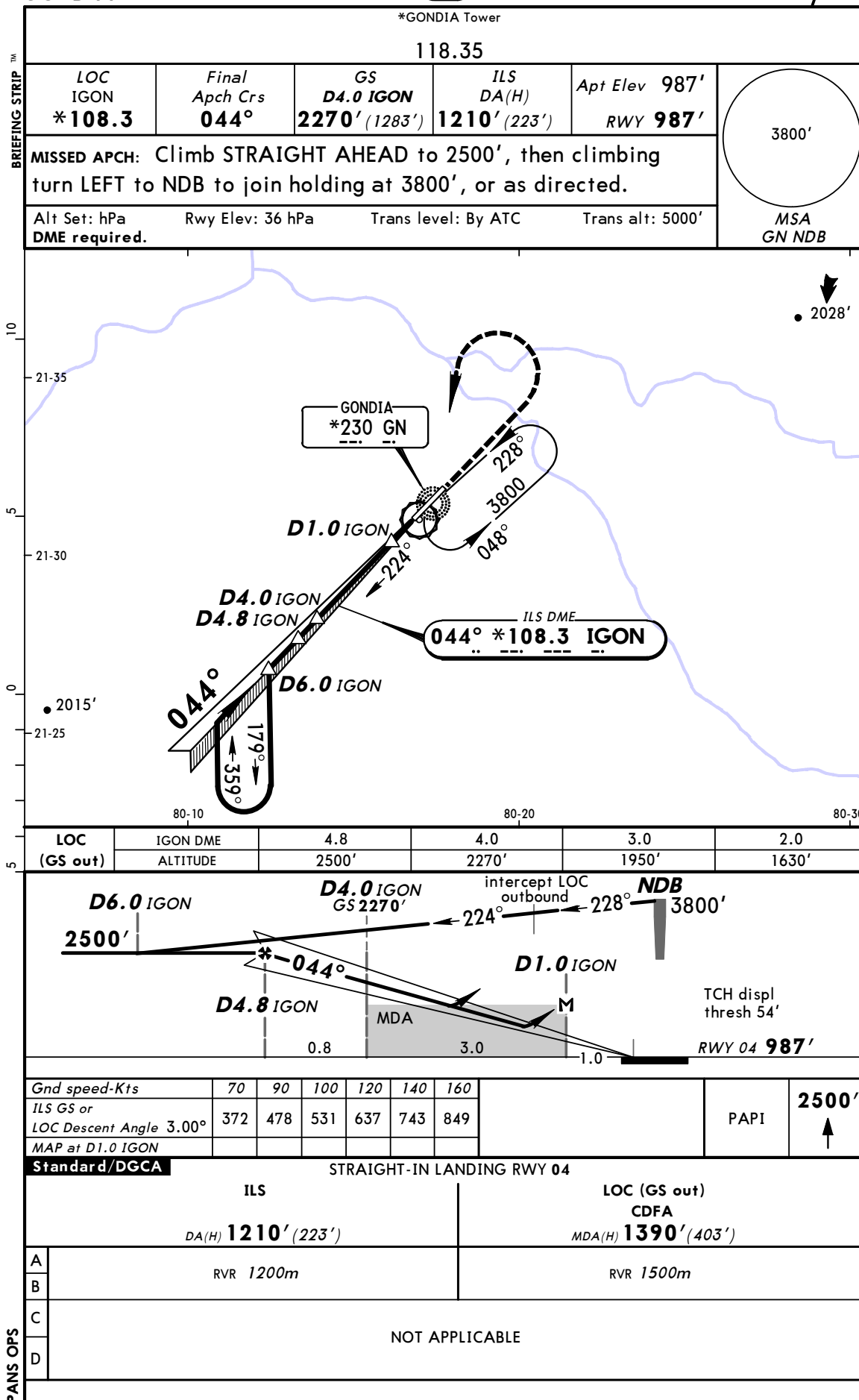
GONDIA, INDIA  
ILS Z Rwy 04



VAGD  
GONDIA

JEPPESSEN  
11 APR 14 11-2 CAT A & B

GONDIA, INDIA  
ILS Y Rwy 04



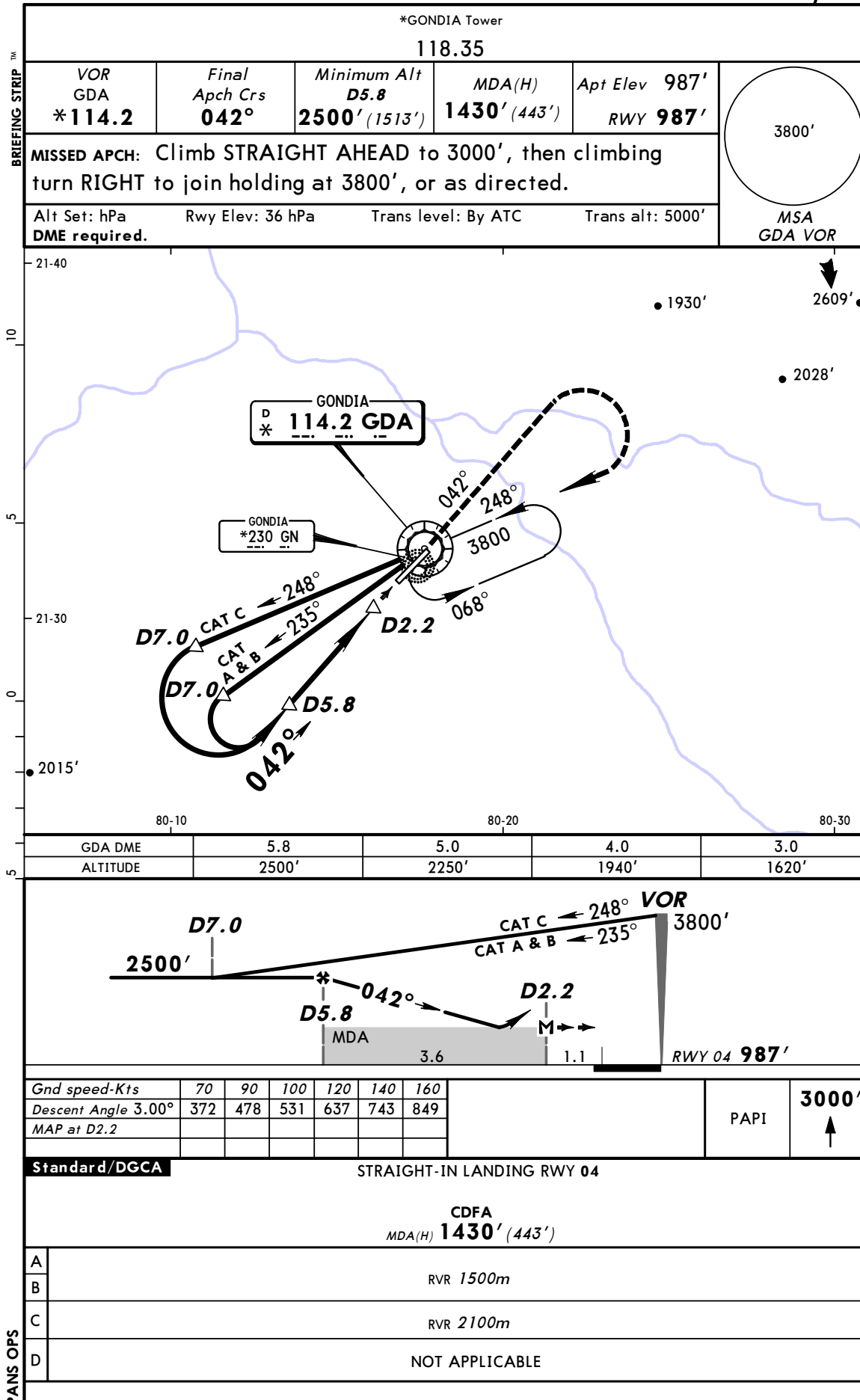
CHANGES: Minimums.

© JEPPESSEN, 2011, 2014. ALL RIGHTS RESERVED.

VAGD  
GONDIA

JEPPESSEN  
11 APR 14 (13-1) CAT A, B & C

GONDIA, INDIA  
VOR Rwy 04



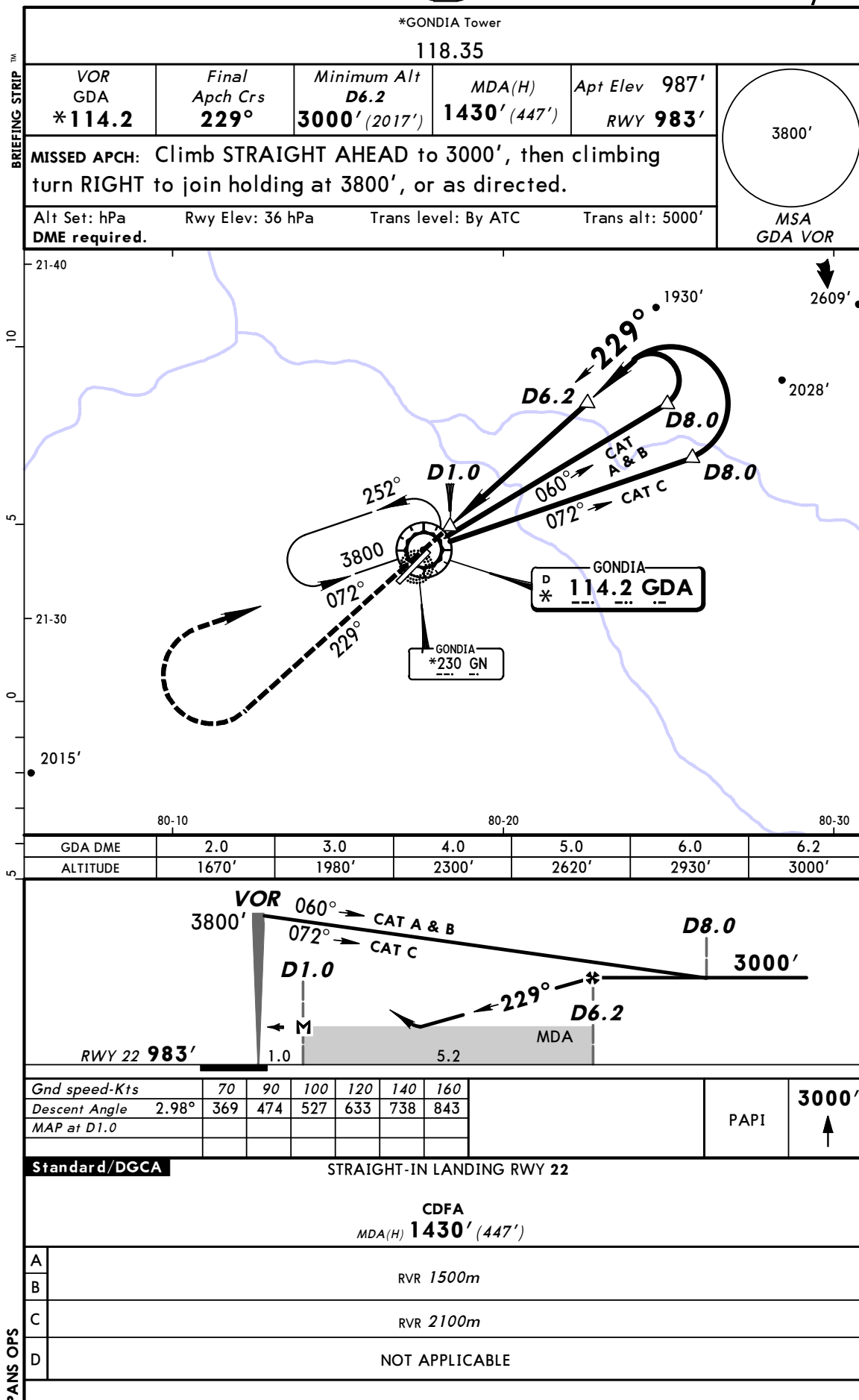
CHANGES: Minimums.

© JEPPESSEN, 2008, 2014. ALL RIGHTS RESERVED.

VAGD  
GONDIA

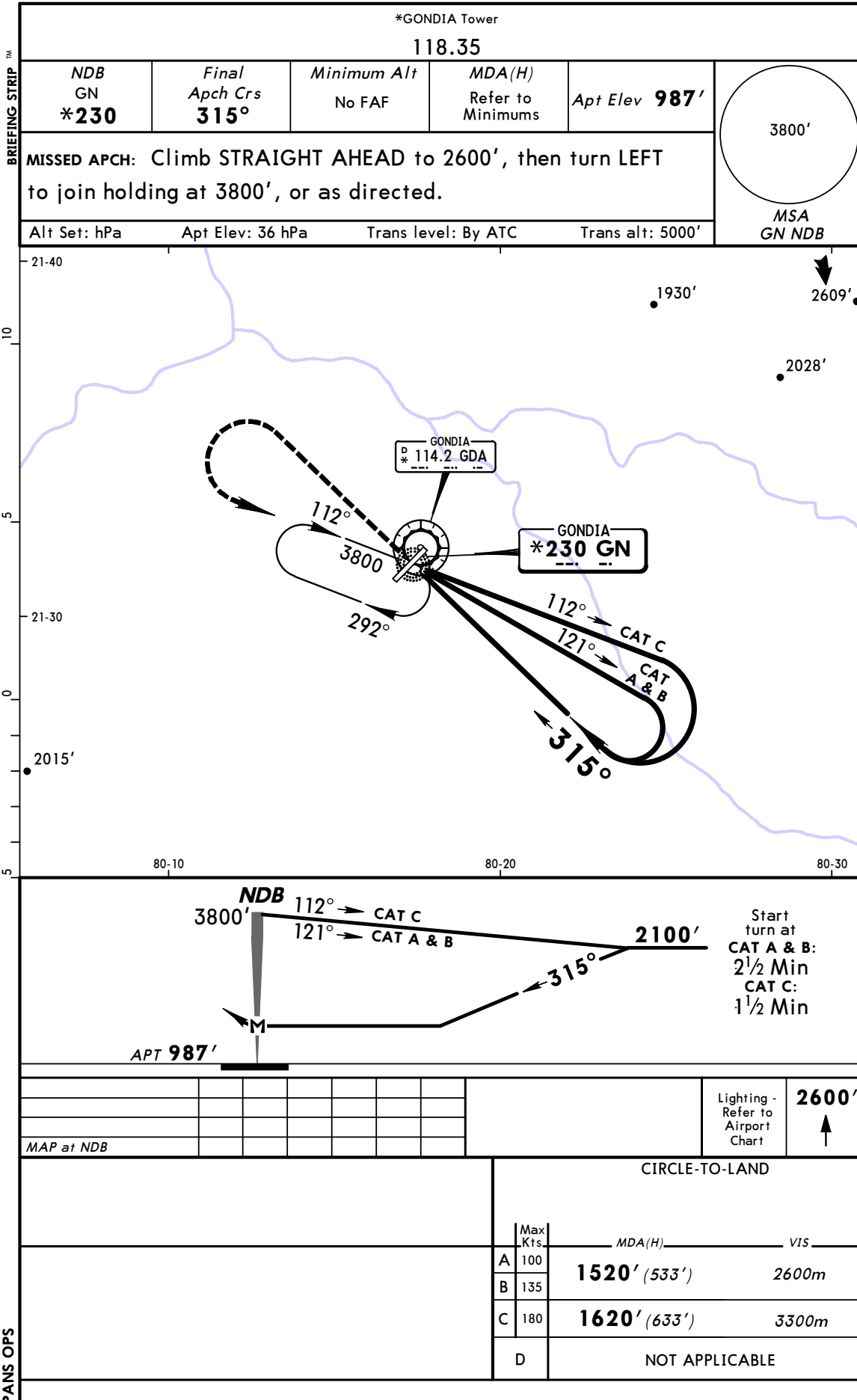
JEPPESSEN  
11 APR 14 (13-2) CAT A, B & C

GONDIA, INDIA  
VOR Rwy 22



VAGD  
GONDIA

GONDIA, INDIA  
CIRCLING NDB



CHANGES: Minimums.

