

# CLASSIC WINGS

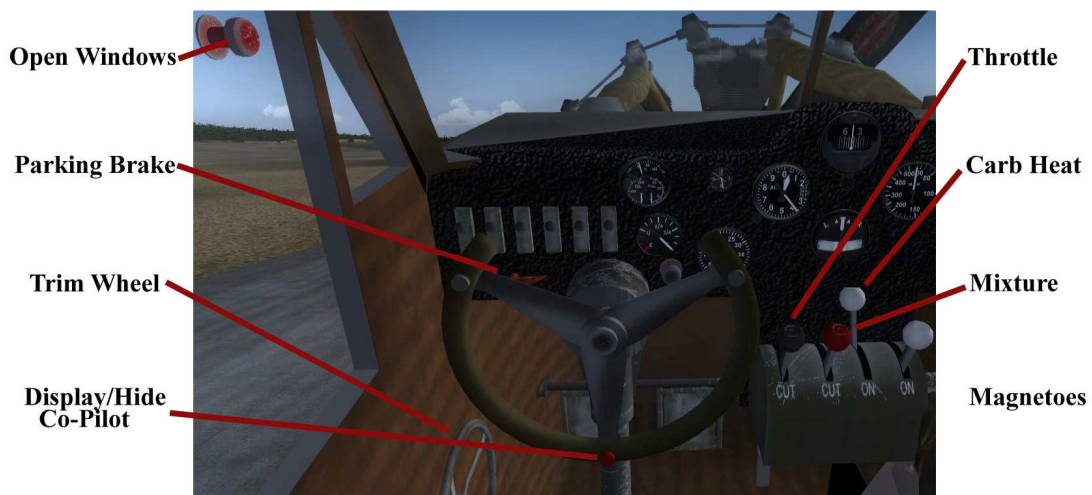
Metal Aircraft Corp G-2-W Flamingo



T E Halpin (who once worked for Stout Aircraft) was the designer. (Thomas E) Halpin Development Co., Lunken Airport, Cincinnati Ohio was reorganized as Metal Aircraft Corp. at Lunken Airport, Cincinnati OH May 1, 1928 after acquisition of the Halpin Co. The company was sold (with Mason & Dixon Air Line) to Robert Schryver, Columbus O. in September 1929.

**The Flamingo** built in 1928 had a 410hp Pratt & Whitney Wasp engine. The Wingspan was: 48'0" its Length was: 30'0" and it carried a load of 2050 pounds. Speed Maximum was 138 and it cruised at 115. Stall speed was 45. It had a range of 1000 miles and sold for \$19,325.

SHIFT+E (open Windows)  
SHIFT+E2 (open Co-Pilots Door)  
SHIFT+E3 (open Rear Door)  
SHIFT+E4 (open Cargo Hatch)



I've also included an Active Camera view profile (Flamingo.acv) with 10 preset viewpoints.

#### Websites of Interest

<http://www.cahslunken.org/Stories/Jimmy%20Angel.htm>

<http://www.cahslunken.org/Stories/FlamingoHist.htm>

[http://www.dmairfield.com/people/angel\\_ji/index.html](http://www.dmairfield.com/people/angel_ji/index.html)

<http://www.jimmieangel.org/lecture1.html>

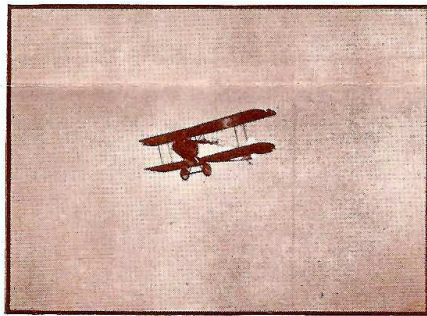
# See Cincinnati from the Air!

♦ ♦ ♦

*One of the World's Most Beautiful  
Aerial Panoramas*

**F**ROM high in the air, Cincinnati and its environs present a view that is infinitely grand . . . a view that is never forgotten by those who have enjoyed its splendor from the seat of an Embry-Riddle plane.

All flights are made by Embry-Riddle pilots who have received their licenses from the U. S. Department of Com-



WACO IN FULL FLIGHT

merce. Each pilot has had hundreds of hours in the air and their long records of safe, careful flying have given to the Embry-Riddle Company a perfect score in safety. Under the steady guidance of these experts, the thrilling beauty of Cincinnati Air-Tours can be enjoyed to the utmost, with comfort and absolute safety.

One of the greatest experiences of your life will be your first airplane ride. Yet it is in no way a physical thrill. An airplane rides far smoother than the finest automobile. It is the first-time view of the earth from the air which imparts that grand and glorious feeling . . . that enchantment which only those who have been "up" can realize.

**Embry-Riddle Company**

LUNKEN AIRPORT ☺☺ CINCINNATI  
EAST 4700



DOWNTOWN CINCINNATI

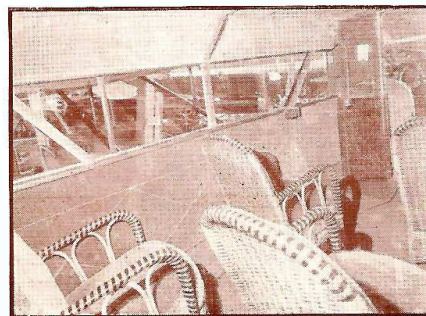
## *The Entire City Tour*

Cincinnati is called the Queen City of the Middle West. The full significance of this trip is realized in a thirty-mile sightseeing trip from an Embry-Riddle air-liner. In addition to the beauty-spots of the shorter tour, you are winged over the length and breadth of all Cincinnati. You clearly see majestic Eden Park and quaint Mount Adams. Rookwood Pottery clinging grandly to the edge of the hill that drops into the valley of the downtown district.

The towers of the city will seem new and strange. You will have to look twice to recognize them. In one panoramic glance you can see the bridges crossing to Newport and Covington, the theatrical district and boulevard Central Parkway. The Ball Park, the Western Hills . . . and then back over Burnet Woods with its many trees. The University . . . the only municipally owned college in the world . . . is more picturesque than ever. Mount Auburn and its sloping streets . . . Victory Boulevard and St. Xavier. Evanston, Norwood, Hyde Park, Oakley. Perhaps you can pick out your home . . . if you look very carefully.

This never-to-be-forgotten trip includes all of the three dollar flight and is made in any type of ship you desire. You will find it fascinating beyond description because the panoramas you see cannot be duplicated anywhere.

Fare per passenger . . . . . \$5.00



INTERIOR OF FLAMINGO



A small scenery area is included in South America (Venezuela) near to where Jimmy Angels is supposed to have taken off on his search for gold. Please note that the huts at Angels Camp will not appear in Golden Wings 3, I have tried to find the texture but to no avail. This scenery works best with a mesh e.g. Fs Global 2005.

Go to create a flight select SVJA as the airport ID code select active runway for takeoff, choose your aircraft and weather then Fly Now! Or select one of the pre defined Angel flights.

#### Credits

Aircraft Hanger - Len Hickman  
Cargo Boxes - Len Hickman  
Angel Falls FX - David "Opa" Marshall  
Aircraft Sounds - Unknown

#### Software used:

Gmax  
Aircraft Container Manager  
FS Panel Studio  
Paint Shop Pro 5  
Photoshop CS3  
DXTBmp  
FS Panel Studio  
Poser 5  
LithUnwrap  
Instant Scenery  
AFX

#### Conditions of Use:

This package is freeware.

This software may be freely used, copied and distributed with the following restrictions:

This document must be included in any redistribution.

DO NOT place these files anywhere that requires a fee for downloading.

DO NOT place any of these files in any commercial package or any CD collection without the authors consent.

If you have any question please don't hesitate to contact me at the email address below.

Craig Richardson.

Website [www.classicwings.net](http://www.classicwings.net)

Email [craigs65bug@hotmail.com](mailto:craigs65bug@hotmail.com)

