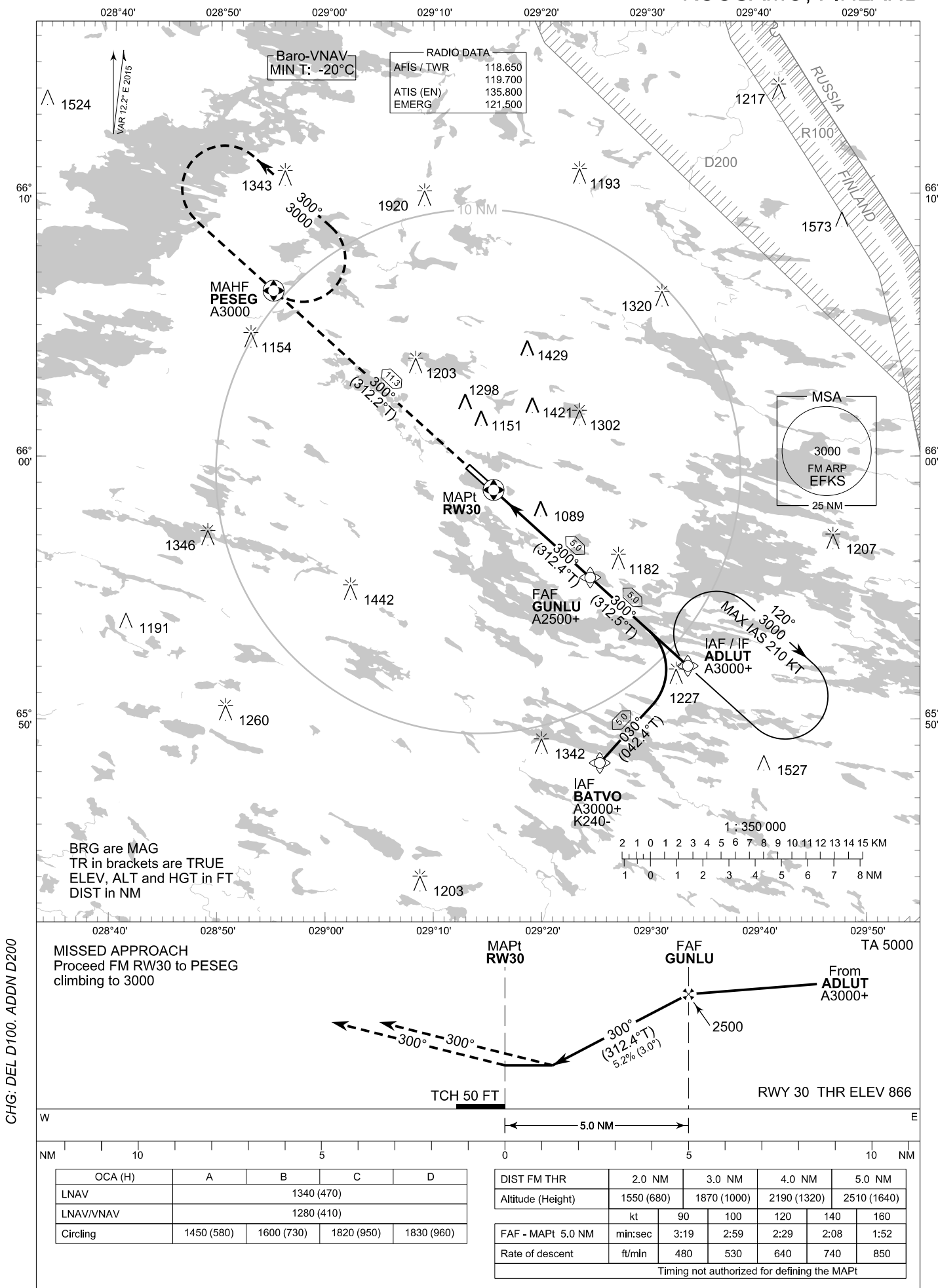


INSTRUMENT
APPROACH CHART - ICAO

ELEV 868 FT
HEIGHTS RELATED TO
AERODROME ELEV

RNAV (GNSS) RWY 30
KUUSAMO AERODROME
KUUSAMO, FINLAND



EFKS RNAV (GNSS) RWY 30										
PROC ID NAV SPEC	SEQ NR	P/T	WPT			MAG GEO TR	DIST NM	Turn Direction	Constraints	
			ID	Type	Flyover				LVL	Speed
R30 BATVO RNP APCH	005	IF	BATVO	IAF	-	030° 042.4°T	5.0	L	A3000+	K240-
	010	TF	ADLUT	IF	-	300° 312.5°T	5.0		A3000+	
	020	TF	GUNLU	FAF	-	300° 312.4°T	5.0		A2500+	
	030	TF	RW30	MAPt	Y	300° 312.2°T	11.3			
	040	TF	PESEG	MAHF	Y				A3000	

EFKS RNAV (GNSS) RWY 30										
PROC ID NAV SPEC	SEQ NR	P/T	WPT			MAG GEO TR	DIST NM	Turn Direction	Constraints	
			ID	Type	Flyover				LVL	Speed
R30 ADLUT RNP APCH	010	IF	ADLUT	IAF/IF	-	300° 312.5°T	5.0		A3000+	
	020	TF	GUNLU	FAF	-	300° 312.4°T	5.0		A2500+	
	030	TF	RW30	MAPt	Y	300° 312.2°T	11.3			
	040	TF	PESEG	MAHF	Y				A3000	

RNAV Holdings							
ID	INBD TR	INBD MAG	Turn Direction	MAX IAS	MNM HLDG LVL	TIME	DIST NM
ADLUT	312.2°T	300°	Right	210 KT	A3000	1 MIN	-
PESEG	132.2°T	120°	Left	230 KT	A3000	1 MIN	-

WPT COORD
SEE PAGE EFKS AD 2.15 - 1

FINAL APPROACH PARAMETERS			
LNAV Gradient	Baro-VNAV		TCH
	VPA	MNM T	
5.24 % (3.00°)	3.00°	-20°C	50 FT