

## FS2004 Bombardier CRJ 200 v3.0 Panel

by David Durst



Here is my updated Bombardier CRJ 200 series panel for FS2004. This panel was originally created back in FS2002 and I had wanted to do an update for some time now. This update is for the 200 series panel and another update that is for the 700, 900 and 1000 series is also available with a slightly different panel layout for that series. This update brings all new .xml gauges as well as new PFD, EICAS and MFD with sub displays as in the real aircraft.

Also I have reworked the panel bitmap and re-arranged some of the gauges for a more functional layout. Most of the panel is self-explanatory on how things work and where the clickable areas are so let's move on to the important stuff.


## PFD Display -

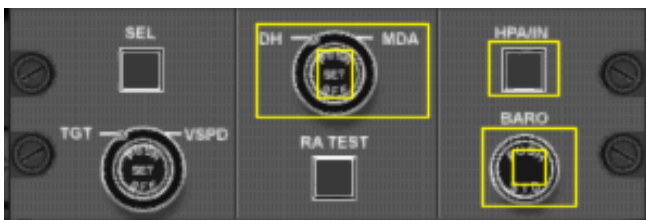


Top left section of PFD display shows mach airspeed if over .40 in white, middle section shows autopilot status lights as well as DH when toggled and altitude height set by ALT dial on autopilot.

Middle section shows airspeed on left, attitude with FD bars in middle, radar altimeter tape and current altitude of aircraft. Under the attitude display is current set airspeed, heading bug, radar altimeter and current baro in either hPA or In.


Bottom section left shows either Nav1 or FMS status when GPS is enabled and current nav setting for blue and white needles in the compass display. Trim indicator readout between the compass display and vertical speed display.

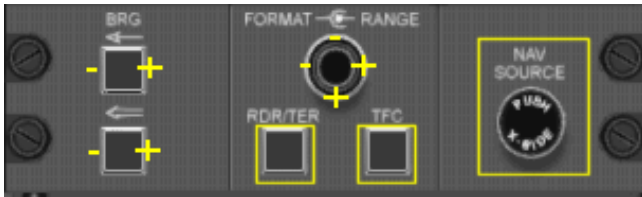
Clicking the following icon  will open up the PFD settings display panel as shown below.



This window will allow you to change the altitude of the DH on the PFD and will show or hide by pressing the middle of the DH button. To toggle between the hPA and In display on the PFD press the button on the top right labeled HPA/IN. The Baro knob will adjust altimeter setting as well as set STD altimeter setting by pressing in the middle

## MFD Display -

The MFD display will show 4 different screens as noted below by pressing the Nav Source button. These are toggled by first clicking on the following icon  to open up the MFD display panel shown below

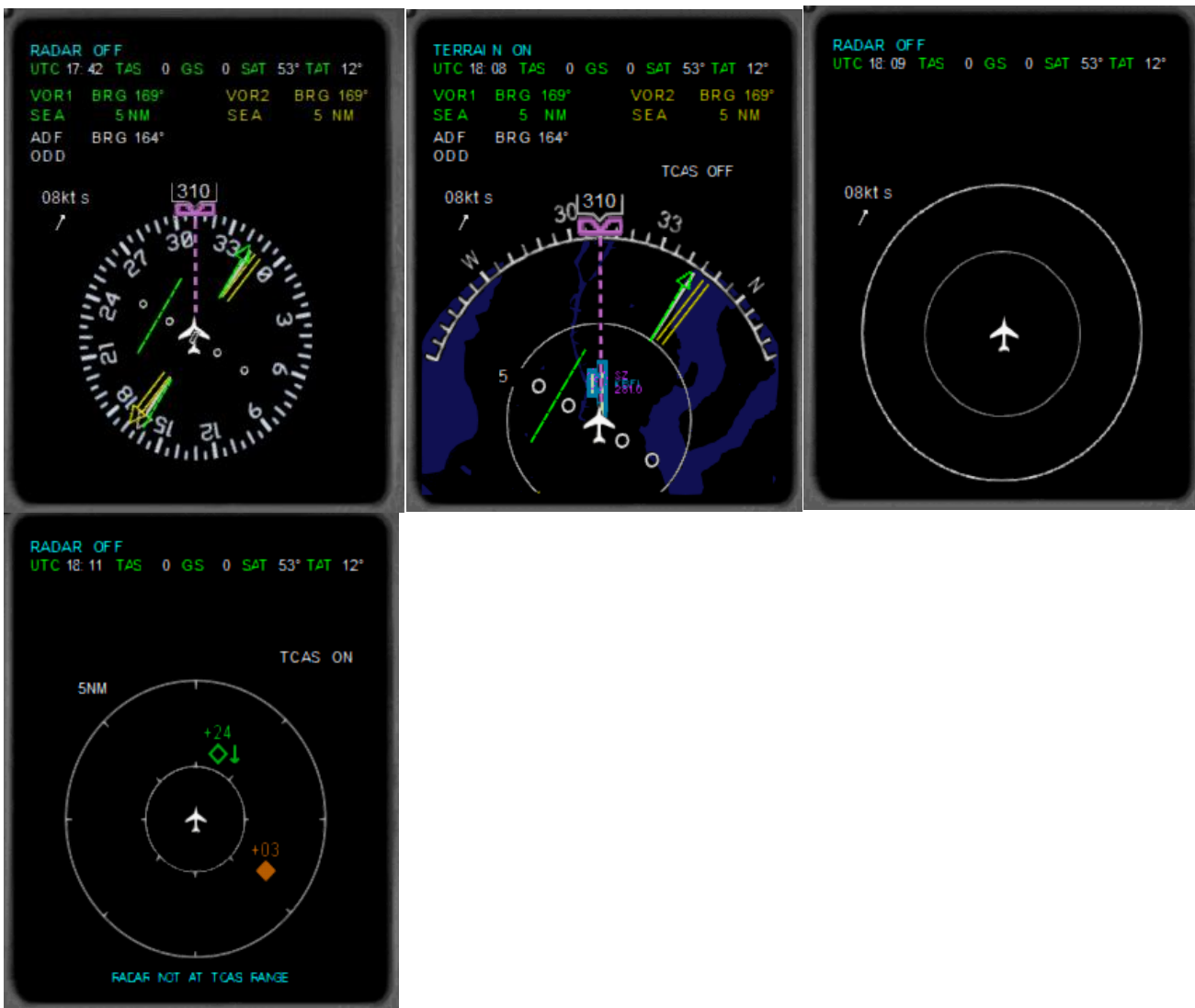


The BRG buttons will toggle the blue and white needles on the PFD display. The RDR/TER button will enable terrain display in MAP mode and TRC button will enable traffic overlay on the MAP screen.

The FORMAT/RANGE toggles work separately for each screen in MAP, GPS and TCAS mode. The left and right range button will toggle range display in MAP, GPS and TCAS whilst the vertical range display will toggle TCAS range in MAP mode

The default MFD screen shows the HSI/VOR mode as shown below. All screens show the second line that has the UTC time, TAS, GS, SAT and TAT readouts.

The Nav information below is shown on the HSI/VOR screen as well as MAP screen. Wind speed and direction are shown on all screens except the TCAS screen



## EICAS Display -



The EICAS display is a single window display that shows engine information, gear status, flap status and fuel status. Also on the right side of the display a CAS (crew alerting system) shows status messages as needed for the aircraft.

The 200 series only shows flaps status as slats are not an option on that version.

The fourth display which is a half display shows other CAS information as well



## Autopilot Display -



The Autopilot is situated on the glare panel area of the cockpit. The following functions are available

**CRS button** — Clicking on the left or right of the button will change course display on PFD/MFD

**FD button** — Pressing this enables the Flight Director bars on the Attitude Indicator

**AP ENG button** — Pressing this will turn on the Master Autopilot mode

**AP DISC button** — Pressing this will turn off the Master Autopilot mode

**SPD button and knob** — Pressing the SPD button will enable the Speed hold only for the aircraft.

**APPR button** — turns green when approach is captured

**B/C button** — Depressing the REV button enables the backcourse mode

**HDG button and knob** — depressing the HDG button engages the heading mode

**NAV (navigation) button** — Pressing the NAV button alternately selects and deselects the navigation mode.

**YD button** — Depressing the LVL button enables yaw damper on aircraft

**ALT button and knob** — Pressing this enable the Altitude hold feature of the autopilot

**GPS button** — depressing the GPS button will toggle the FS GPS on and off


The dial on the far right when pressing top or bottom will change the vertical speed hold indicator in the vertical speed window in the PFD

## Standby Instruments -

Shows the attitude display of the aircraft and combo gauge for altimeter and airspeed



## Hud Display -

Clicking on the following icon  will open up the Hud Display as shown below.

The display will show Mag heading, wind direction and speed, airspeed, attitude and altimeter as well as the current heading, course and vertical speed of the aircraft.



**Throttle Display -** Clicking on the throttle icon  will open up the throttle panel





The throttle panel houses controls for the gear switch, spoiler, throttles, flaps as well as radio communications and dial for the panel lighting

On the left side of the radio display is a toggle button for each radio. Pressing the button to the left of the active frequency will surround either the standby or active frequency with a white box. Once that box is showing you use the tuning knob to the right of the display to adjust that radio. Clicking on the toggle button again disables the tuning of that radio.

On the right side of the display, the first two buttons will toggle the standby frequency with the active frequency.

The far right button will Ident Nav1 or Nav2 based on which page is showing and ID will show under the Nav2 or Nav2 words.

The far right button third from the top will toggle the radio page between Nav1 display and Nav2 display

Under the radio display is the Comms area. The far left buttons are Ident for Nav1 or Nav2

The middle big knob is for switching between Com1, Com2 and Receive all Comms

The button below is for Marker speaker toggle

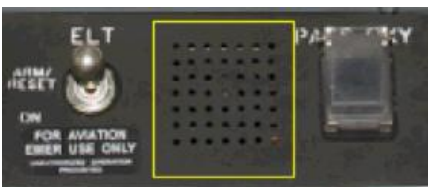
The knob on the right side of panel under lighting that is in yellow will turn on night lighting for the panel.

## Overhead Panel –

Clicking this area in yellow will open up the overhead panel



To close the overhead panel click on the speaker area when the panel is open as shown below



The overhead panel is adjustable and the best way to set this up is to drag the panel so it shows on the screen when clicked as shown below



The overhead panel has the toggles for all lighting functions of the aircraft. The left side bottom is for taxi and landing lights and the area directly above is aircraft lighting except the panel lights which are on the throttle panel area. The taxi and landing lights are also shown in the secondary EICAS display when on.

Also by dragging the overhead panel out you get access to the icing toggles for the aircraft as shown below in yellow. The other functions of the overhead panel are not implemented at this time





## **TCAS Information -**

Radar screen is set to display normal traffic and also give advisories based on distance of traffic.

There are two clickable areas on the display, the left top View/BRT will increase or decrease the brightness of the traffic on the display. The right top RNG will adjust the following distances – 3,5,10 and 20 NM miles

Traffic advisories – When traffic is within 1200 feet of the aircraft a yellow circle will appear for the traffic icon and TRAFFIC will be displayed in yellow on the lower right side of the display

Resolution advisories- When traffic is within 300 feet of the aircraft, a red square will appear and TRAFFIC will display in red on the lower right side of the display.

No other options are available at this time

Hope you enjoy this panel, if you have any questions feel free to contact me at one of the following –

David Durst  
davidsfspanels.net  
azpilot61@gmail.com