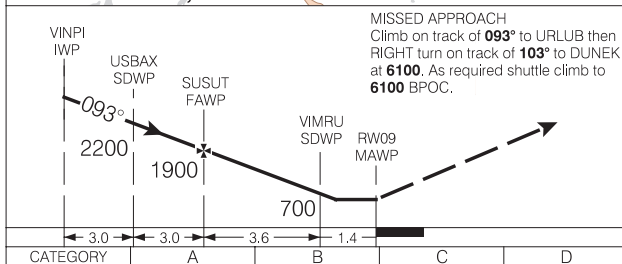
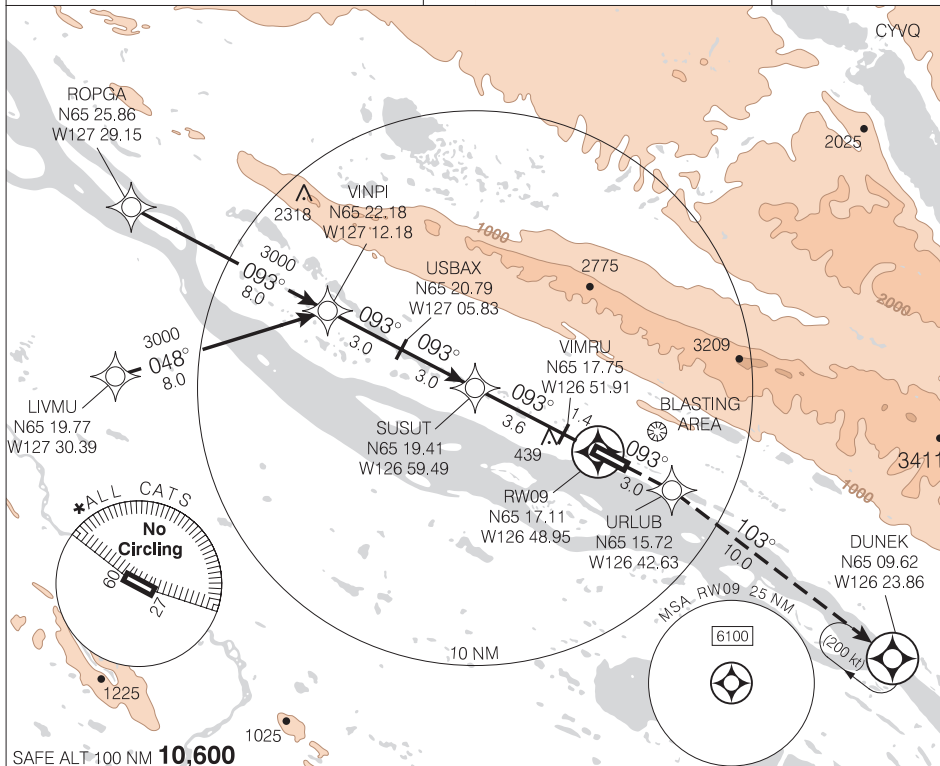


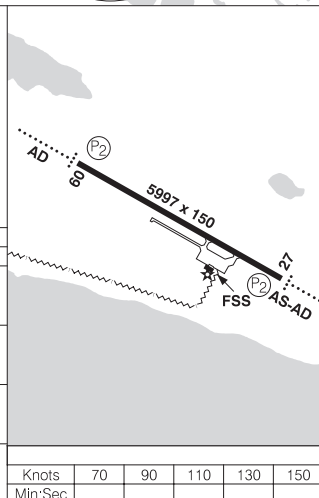
## RNAV (GNSS) RWY 09

ARR/DEP EDMONTON CENTRE 134.825	RADIO 122.2 (MF 5 NM) 282.3	ELEV 238
		TDZE 09 238



**MISSED APPROACH**  
Climb on track of **093°** to URLUB then  
RIGHT turn on track of **103°** to DUNEK  
at **6100**. As required shuttle climb to  
**6100** BPOC.

LNAV	<b>580</b>		(342)	1
★CIRCLING	<b>740</b>	(502)	1½	<b>740</b> (502) 2
	<b>840</b> (602) 2			



## RNAV (GNSS) RWY 09

VAR 24° E (2011)

651653N 1264755W

NORMAN WELLS NT  
NORMAN WELLS

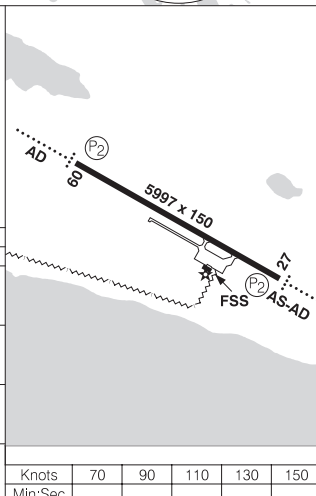
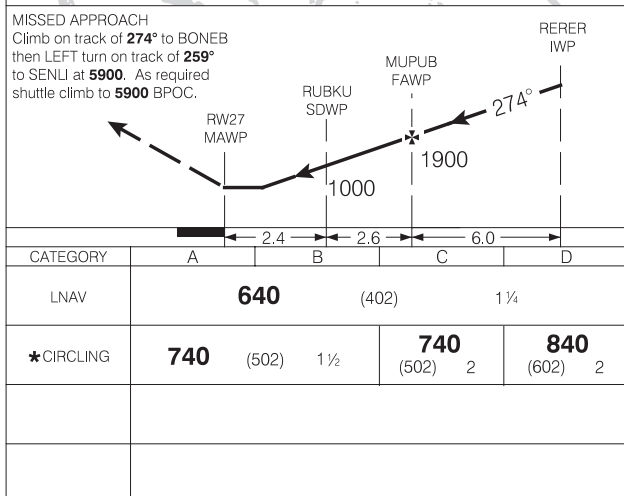
NAD83

EFF 5 APR 12

CHANGE: New procedure

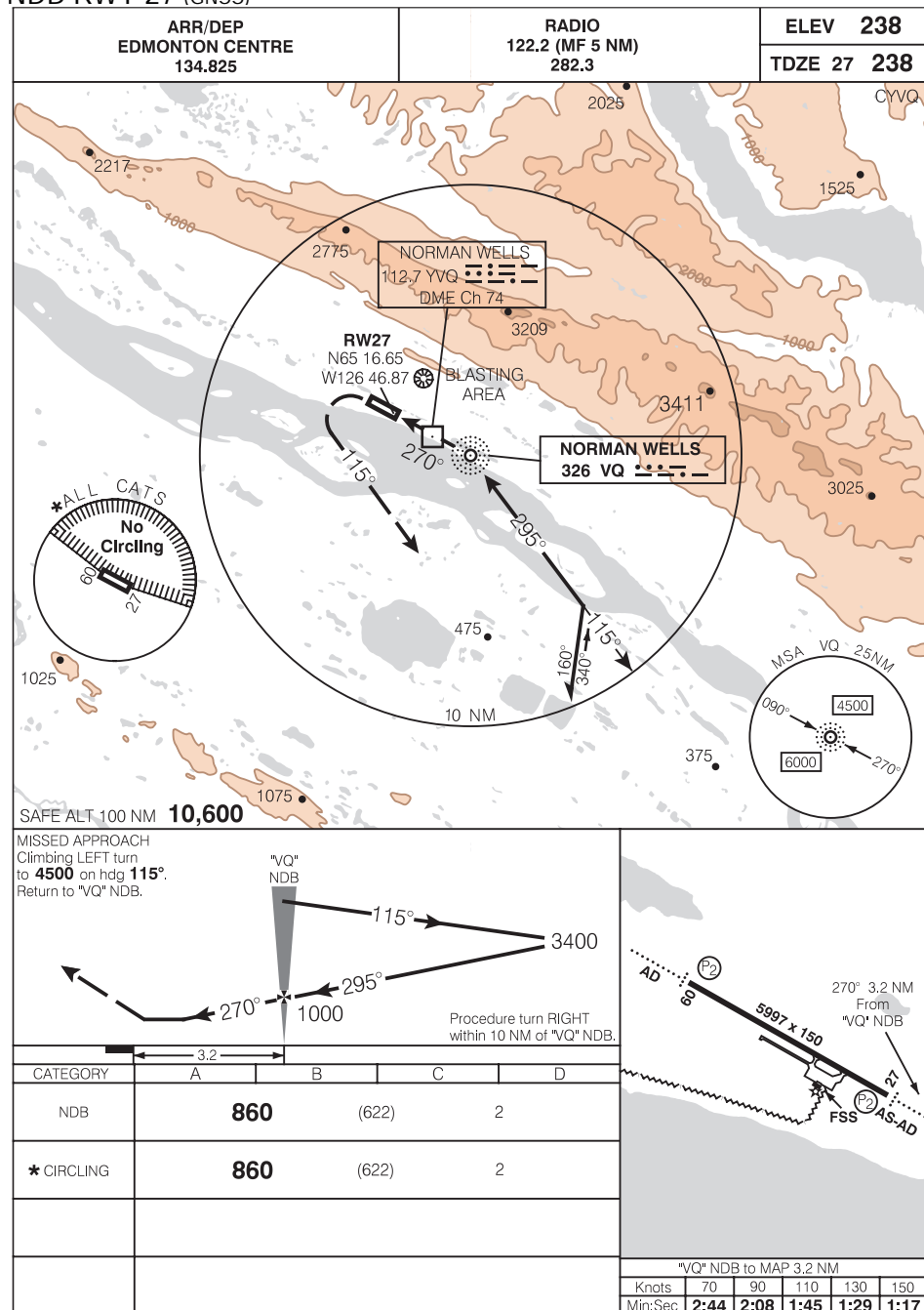
Source of Canadian Civil Aeronautical Data : © 2012 NAV CANADA All rights reserved

## RNAV (GNSS) RWY 27



Source of Canadian Civil Aeronautical Data : © 2012 NAV CANADA All rights reserved

## NDB RWY 27 (GNSS)



## NDB RWY 27 (GNSS)

651653N 1264755W

VAR 28°E

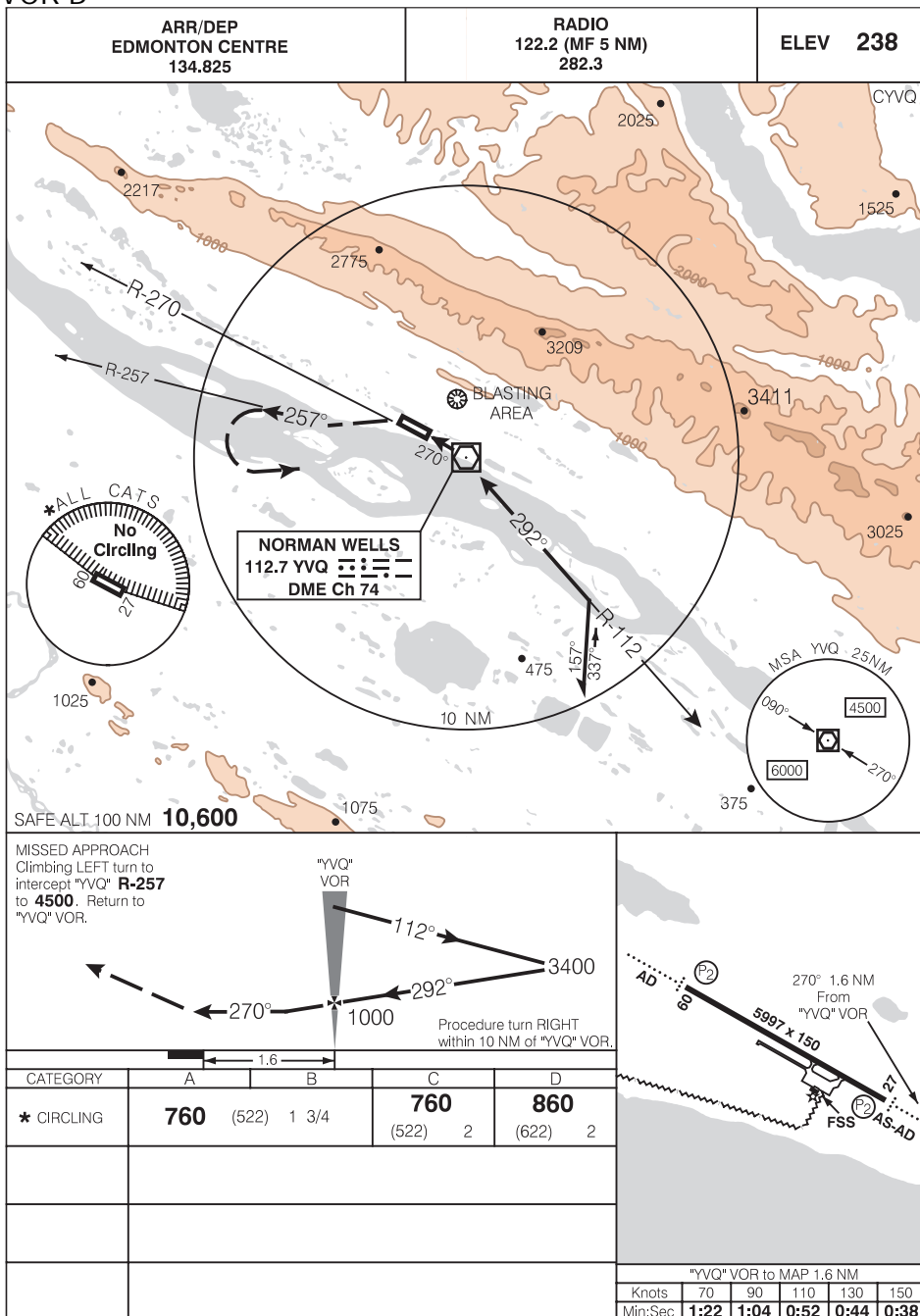
NORMAN WELLS NT  
NORMAN WELLS

NAD83

EFF 27 AUG 09

CHANGE: AGCC

## VOR B



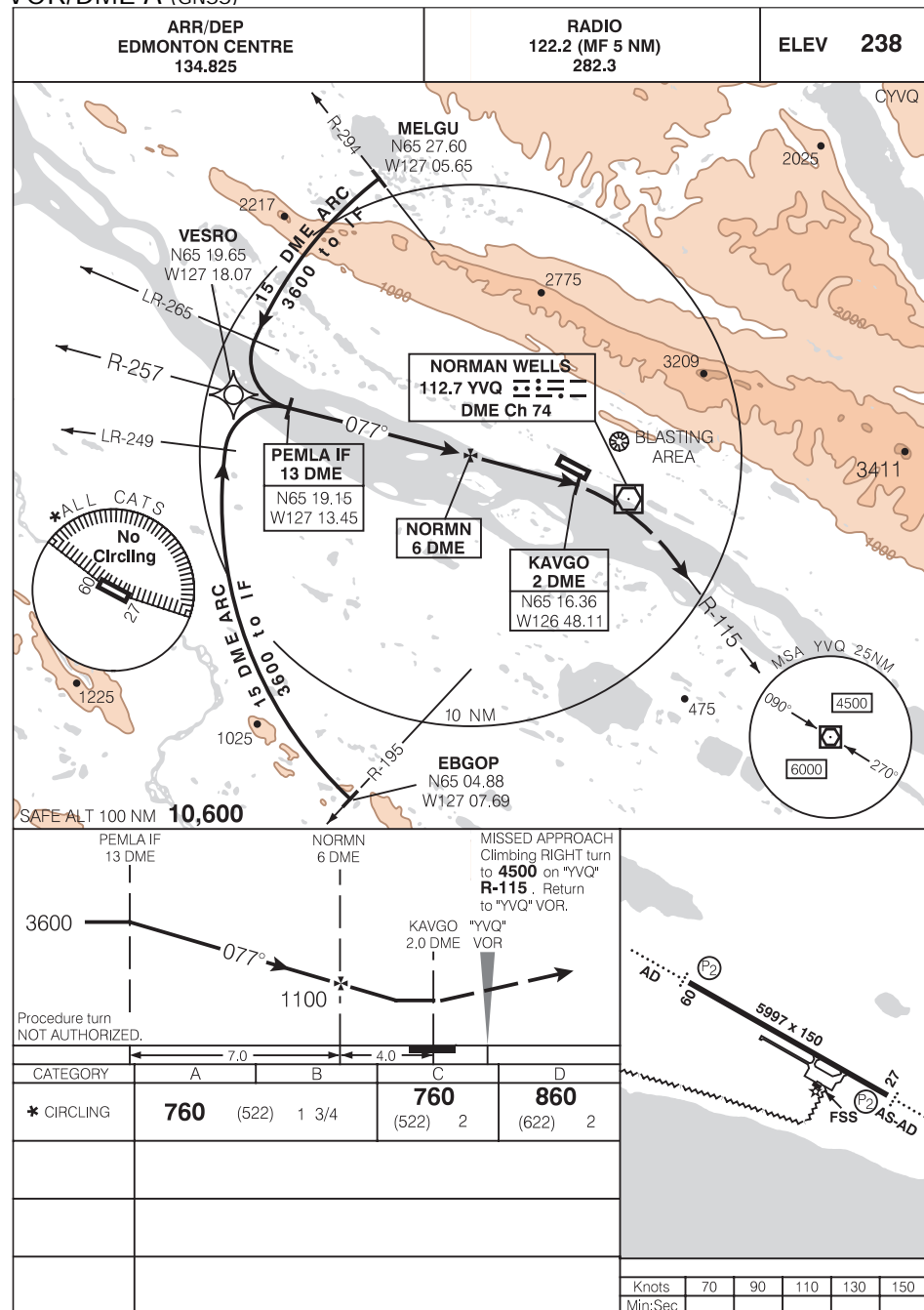
## VOR B

651653N 1264755W

VAR 28°E

NORMAN WELLS NT  
NORMAN WELLS  
NAD83

## VOR/DME A (GNSS)



## VOR/DME A (GNSS)

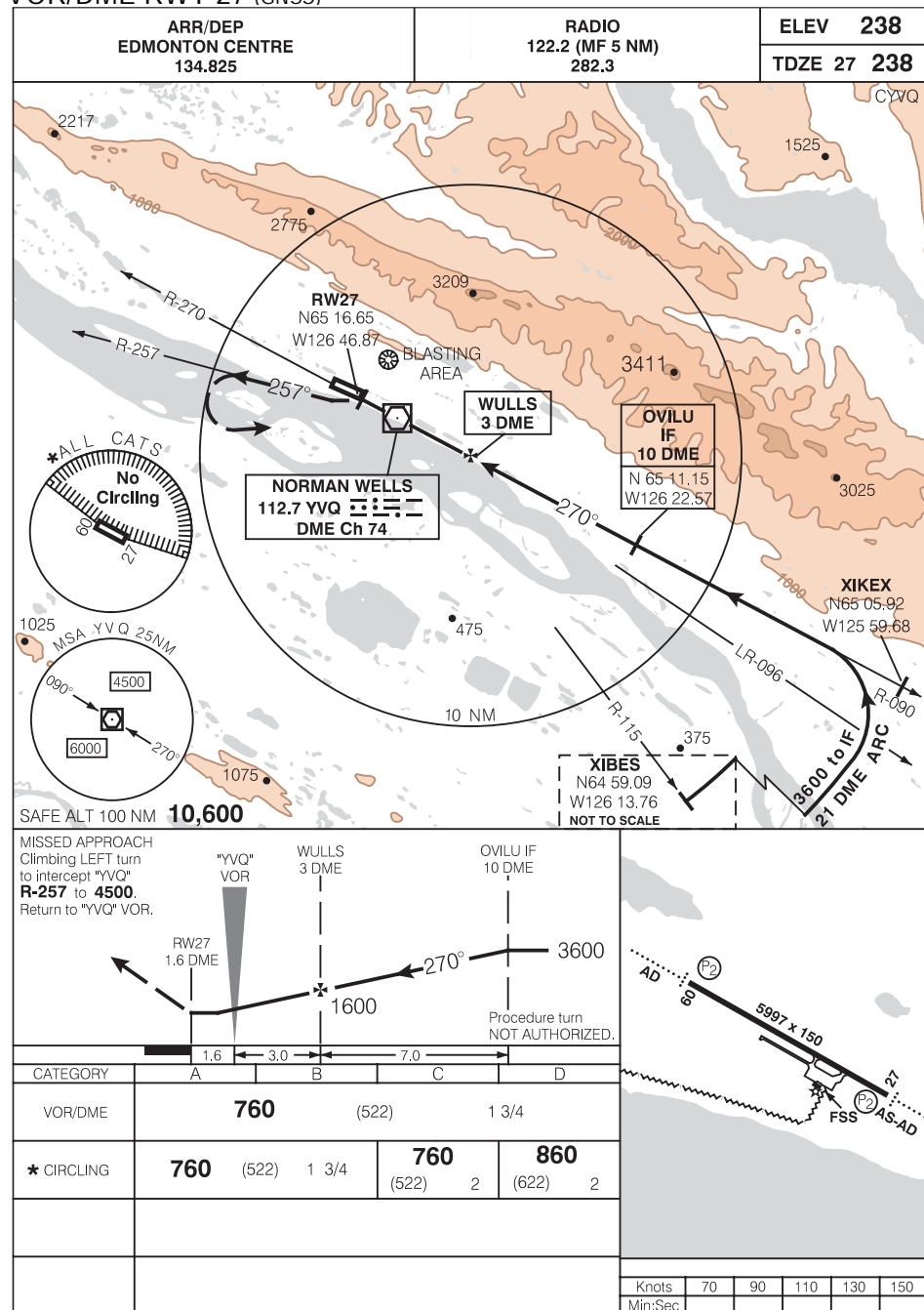
651653N 1264755W

VAR 28°E

NORMAN WELLS NT  
NORMAN WELLS

NAD83

## VOR/DME RWY 27 (GNSS)



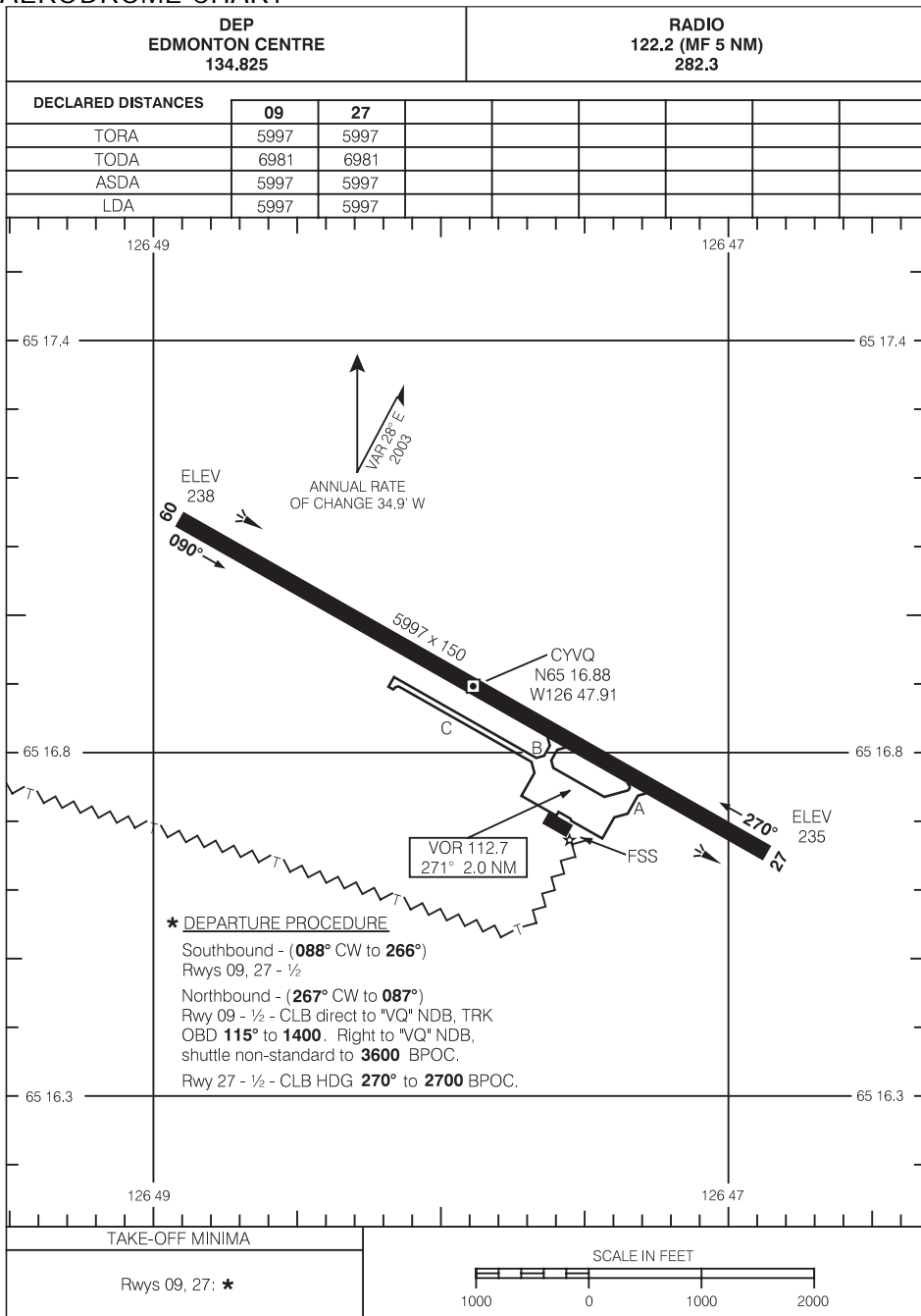
## VOR/DME RWY 27 (GNSS)

651653N 1264755W

VAR 28°E

NORMAN WELLS NT  
NORMAN WELLS

# AERODROME CHART



Source of Canadian Civil Aeronautical Data : © 2012 NAV CANADA All rights reserved

# AERODROME CHART