

# ***Tom A310***

***Maintenance Facility Planing***

***MFP***



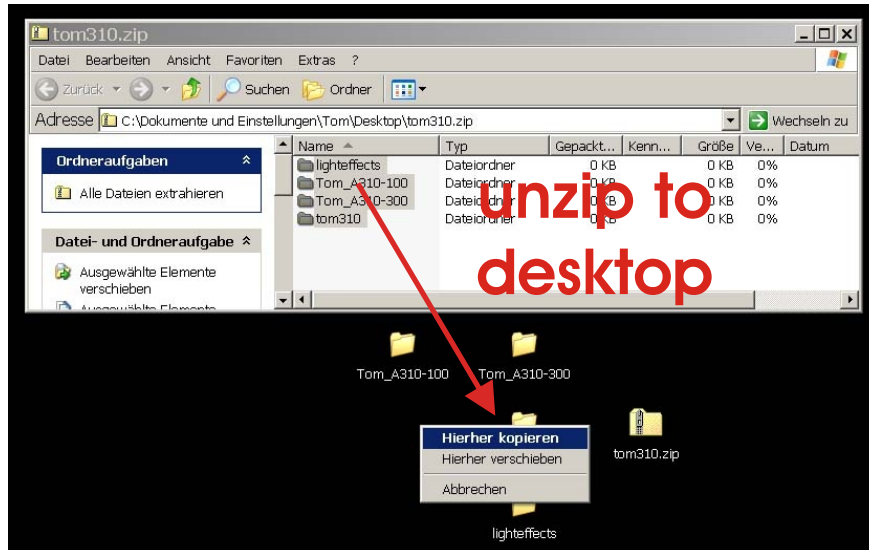
***Version 10 04/2010***

# **Tom A310**

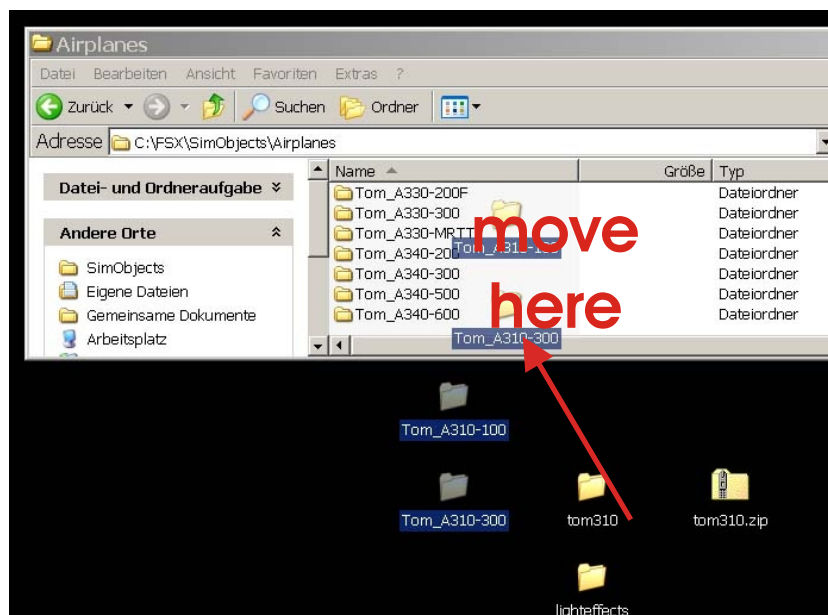
## **Maintenance Facility Planing MFP**

### 1. Installation in FSX

#### 1) Unzip **TOM310.ZIP** to your desktop



#### 2) Move the two folders **Tom\_A310-300** and **Tom\_A310-100** into your FSX/SimObjects/Airplanes folder.

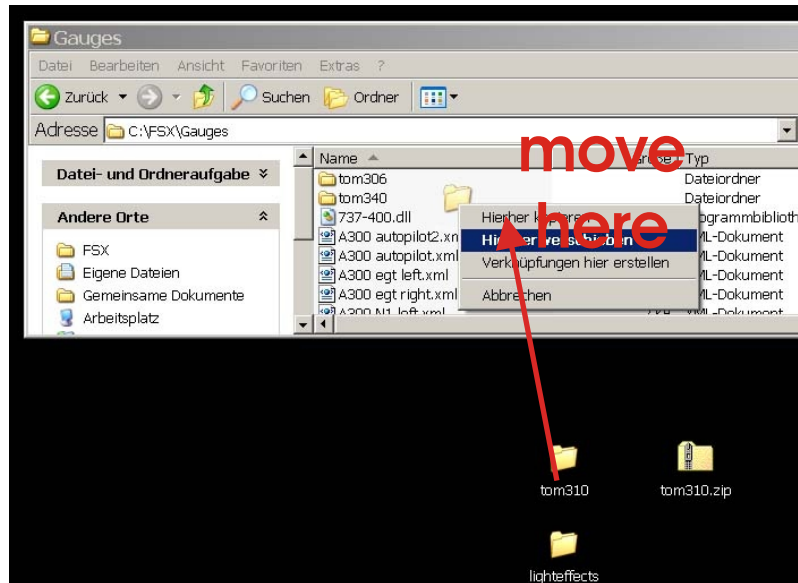


**Version 10 04/2010**

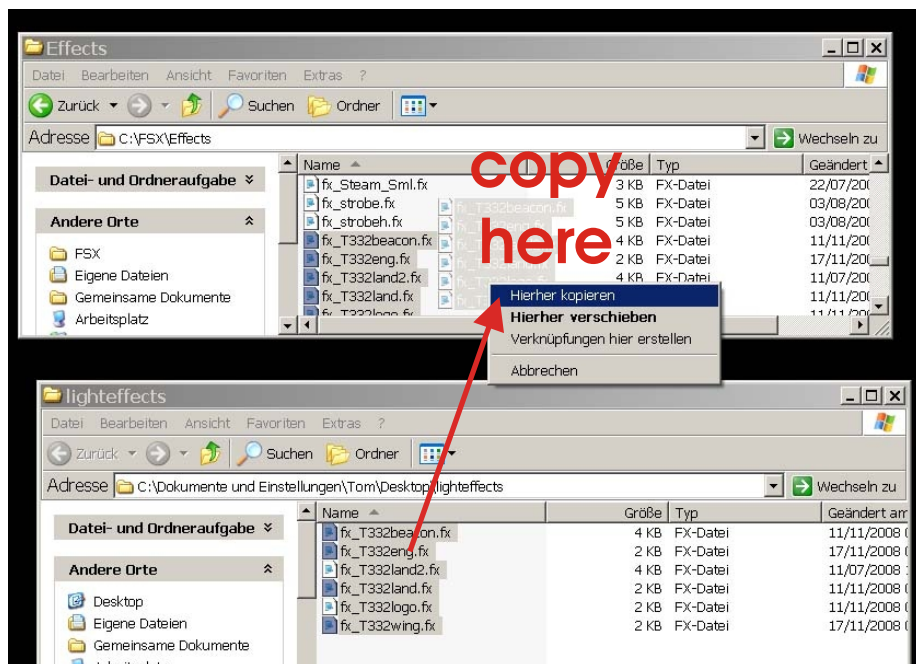
# Tom A310

## Maintenance Facility Planing MFP

- 3) Move the complete **tom310** folder into your FSX/Gauges folder. Do NOT copy content of the tom310 folder, move the whole folder as it is!



- 4) Move all files from the **lighteffects** folder into your FSX/Effects folder. They are identical to my other Airbus effects, so if you have any other of my A330/340/300 installed, you do not need the effect files.



**Version 10 04/2010**

# **Tom A310**

## **Maintenance Facility Planing MFP**

### **5. KnownBugs**

**1) Disapearing or flashing lights:**

Try to increase the "NUM\_LIGHTS" in the fsx.cfg from 8 to 10

**2) Flight envelope protection (Fly by wire)**

If you want to activate the FSX fly by wire function, just open the **aircraft.cfg** and remove the // in front of the entrie **fly\_by\_wire=1** of the **[airplane\_geometry]** section.

**Just notice that the A310 does not have a full Fly by wire function.**

**3) The flightmodel is not as good as it should be since i am not an FDE specialist, so this is all i can do for now. Feel free to change wahtever you want.**

**4) Multiplayer Mode: The aircraft is multiplayer compatible!! No separate mdl's are needed.**

**5) Repaints.**

Repaint resources are included. Freeware repaints are allowed. Read the copyright.txt which is included in the main zip file.

**YOU NEED AT LEAST FSX SERVICE PACK  
1 OR 2 TO RUN THIS AIRCRAFT.  
IF YOU DONT HAVE A SERVICE PACK  
INSTALLED, THE AIRCRAFT WILL STAY  
TRANSPARENT OR BLACK EXCEPT FOR  
THE COCKPIT AND WINGS**

**Version 10 04/2010**