

Tom 727-200ADV

Flight Crew Manual FCM



**YOU NEED AT LEAST FSX SERVICE PACK
1 OR 2 TO RUN THIS AIRCRAFT.
IF YOU DONT HAVE A SERVICE PACK
INSTALLED, THE AIRCRAFT WILL STAY
TRANSPARENT OR BLACK !!!!**

Version 1.0 01/2011

Tom 727-200ADV

Flight Crew Manual FCM

1. Main Panel



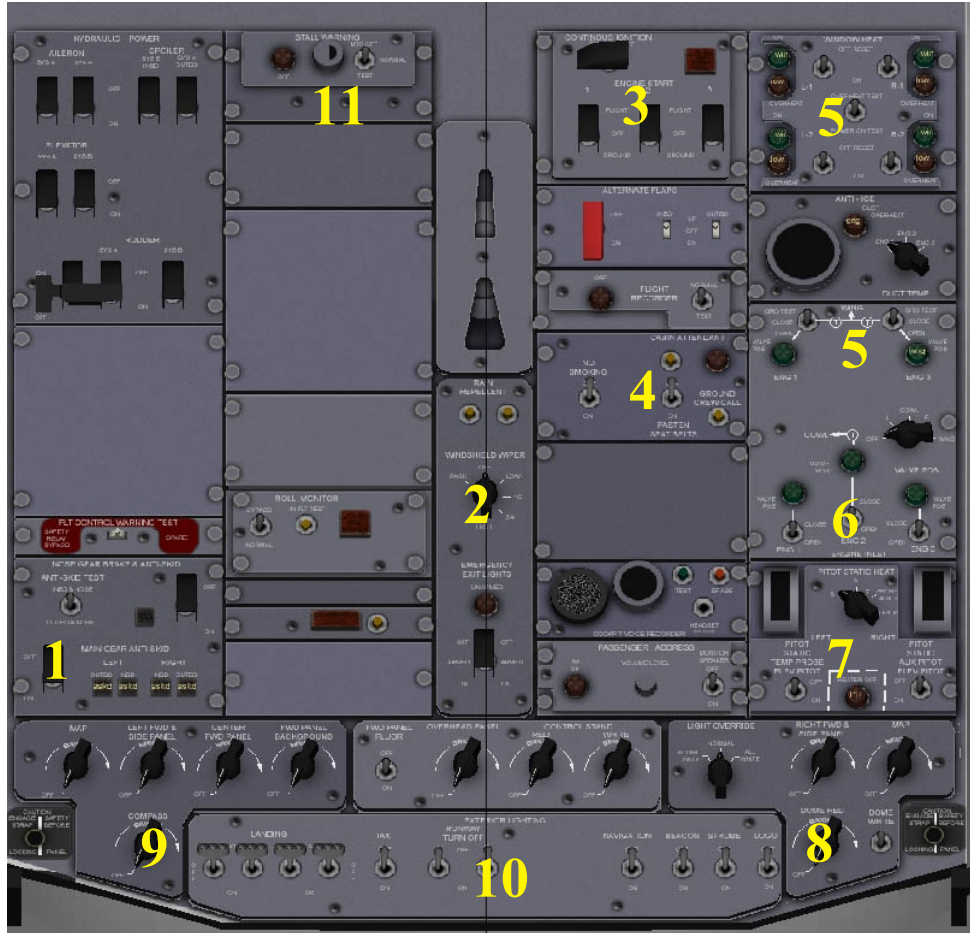
- 1) Engine Failure Lamp
- 2) ASI Airspeed Indicator + Autopilot IAS Turn Knob
- 3) VOR/ADF
- 4) Attitude Indicator
- 5) HSI
- 6) Indicator Lights
- 7) Altimeter
- 8) VSI
- 9) Parking Brake
- 10) Radar Altitude + Decision Height Turn Knob
- 11) Clock
- 12) OMI
- 13) Rudder / Aileron/Yawdamper indicator
- 14) Standby Horizon
- 15) Engine Gauges: EPR, N1, EGT, N2, FuelFlow
- 16) Flaps Position Indicators
- 17) Gear Lever
- 18) TAT True Air Temperature
- 19) Gear Indicator Lights
- 20+21) Fire Warnings, Extinguishers, Bottle select switch
- 22) Autothrottle ON/OFF
sets ASI speed bug to actual speed and activates AP speed hold mode.

Version 1.0 01/2011

Tom 727-200ADV

Flight Crew Manual FCM

1.1. Overhead panel



- 1) Anti Skid Brakes
- 2) Wipers
- 3) Engine Starter
- 4) Cabin Announcements (No Smoking/ Fasten Seatbelts)
- 5) Structural Anti Ice
- 6) Engine Anti Ice
- 7) Pitot Heat
- 8) Cockpit Flood Light
- 9) Panel Backlight
- 10) External Lights
- 11) Front Airstair

Tom 727-200ADV

Flight Crew Manual FCM

1.2. Engineer auxilliary panel



- 1) APU Start/Stop
- 2) APU Generator
- 3) APU Fire Warning and Extinguisher
- 4) APU Instruments
- 5) Slats / Krueger Indicator Lights

Tom 727-200ADV

Flight Crew Manual FCM

1.3. Engineer Panel



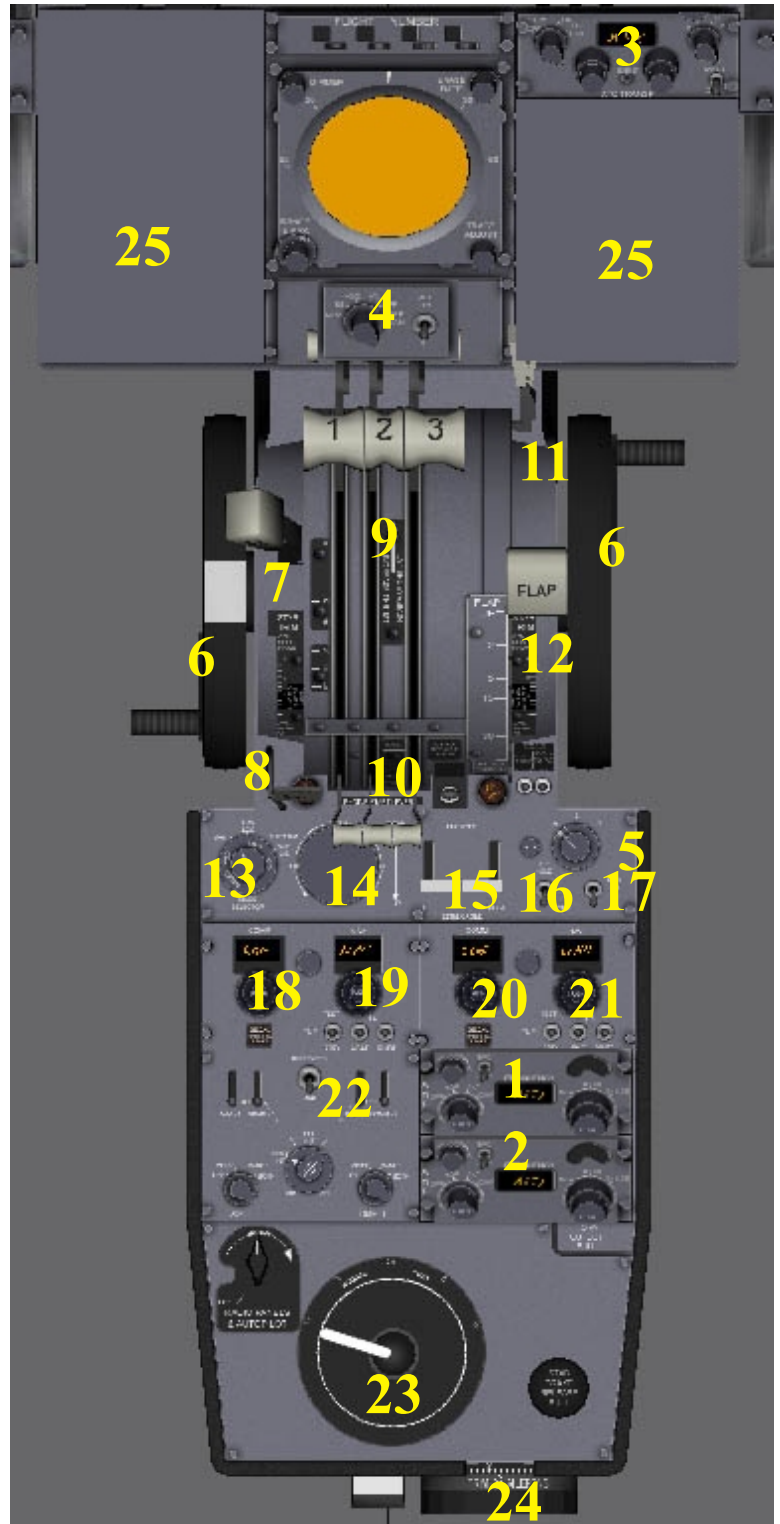
- 1) Master Battery
- 2) Engine Generator Switches
- 3) Avionics Master Switch
- 4) Generator Bus Voltage Gauges
- 5) Main Bus Voltage
- 6abc) Fuel System. Fuel Pump Switches, Engine Fuel Valves + Cross feed switches.
- 7ab) Hydraulic Switches for Engine 1+3, Electric Pumps 1+2
- 8) Bleed Air System. Auto, Off, Engines, APU.
- 9) Engine Gauges. Oil Qty, Oil Temp, Oil Press, Vibrations
- 10) External Door Status.
- 11) Autobrake buttons (inop)

Tom 727-200ADV

Flight Crew Manual FCM

1.4. Pedestal panel

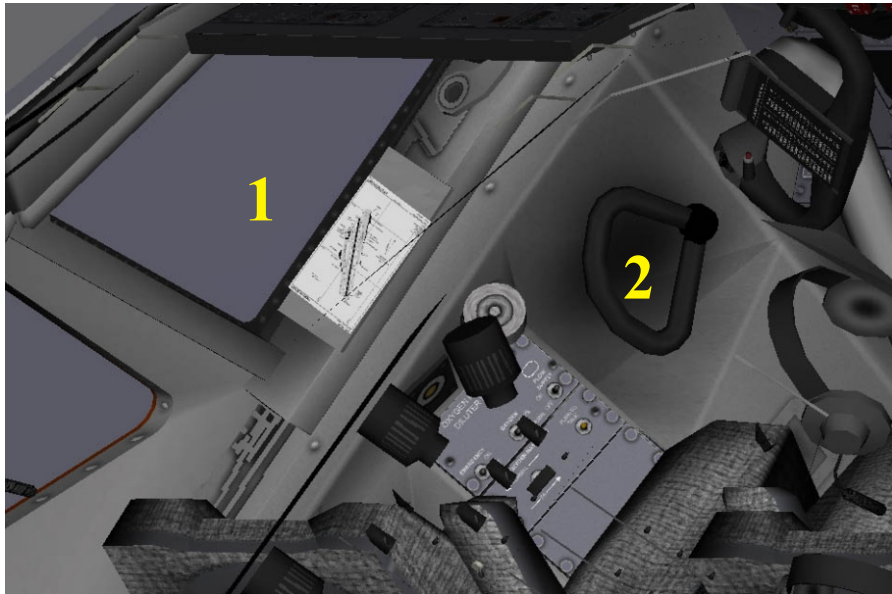
- 1) ADF1
- 2) ADF2
- 3) Marker
- 4) Dummy WX Radar Switch
- 5) Flight Director switch
- 6) Elevator Trim
- 7) Spoiler lever
- 8) Parking Brake switch and light
- 9) Throttle Levers
- 10) Engine fuel cutoff levers
- 11) Friction lock lever
- 12) Flaps lever
- 13) Autopilot Mode selector
(from left to right)
Manual
NAV hold
Localizer hold
Localizer+Glideslope hold
- 14) AP steering
turn left/right
pitch up/down
- 15) AP Master
- 16) Altitude hold switch
holds actual altitude
- 17) Heading hold switch, FD switch
holds HSI heading
- 18) COM1 active Frequency
- 19) NAV1 active Frequency
- 20) COM2 active Frequency
- 21) NAV2 active Frequency
Note: theres no standby
Frequency on this Panel!
- 22) Audio switches
- 23) Rudder Trim
- 24) Aileron Trim
- 25) INS or FMC Gauges



Tom 727-200ADV

Flight Crew Manual FCM

1.5. Side panel

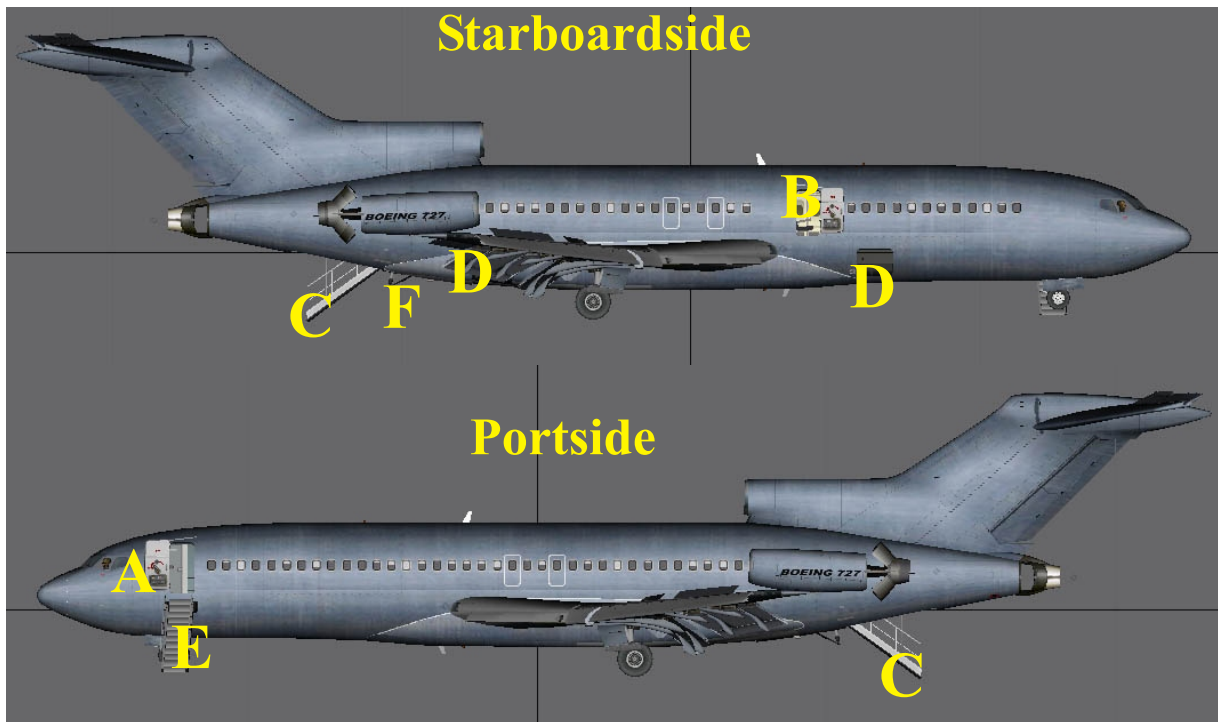


- 1) Cockpitwindow. Stays closed during flight
- 2) Tillerwheel (Nose gear steering).

Tom 727-200ADV

Flight Crew Manual FCM

2. External 2.1 Doors



- A) Main passenger door, stays closed above 50kts (Shift+e 1)
- B) Galley door, stays closed above 50kts (Shift+e 3)
- C) Rear Airstair, stays closed above 3000ft (Shift+e 4)
- D) Cargo door, stays closed with engines running (Shift+e 2)
- E) Front Airstair. Can be opened/closed by a switch on the VC overhead panel.
- F) Tailstrike Protection. Animated as default "Tailhook"

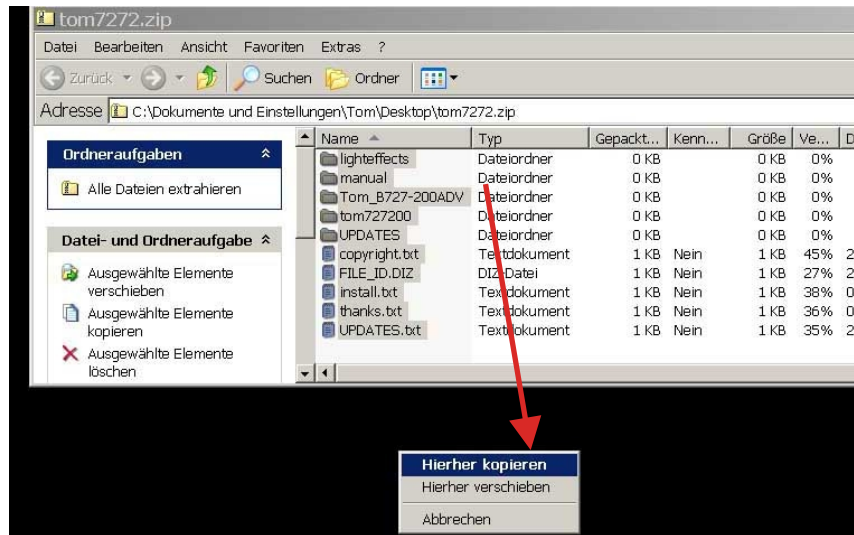
(Shift+e X) means that you "press and hold" **Shift**, press and release **e**, release shift and press key **X (1,2,3 or 4)** quickly after that.

Tom 727-200ADV

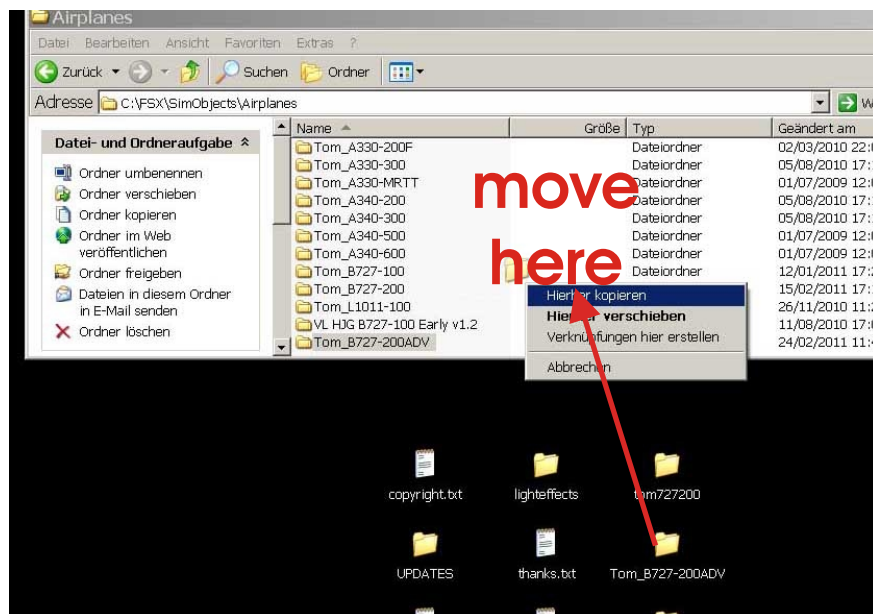
Flight Crew Manual FCM

1. Installation in FSX

1) Unzip **TOM7272.ZIP** to your desktop



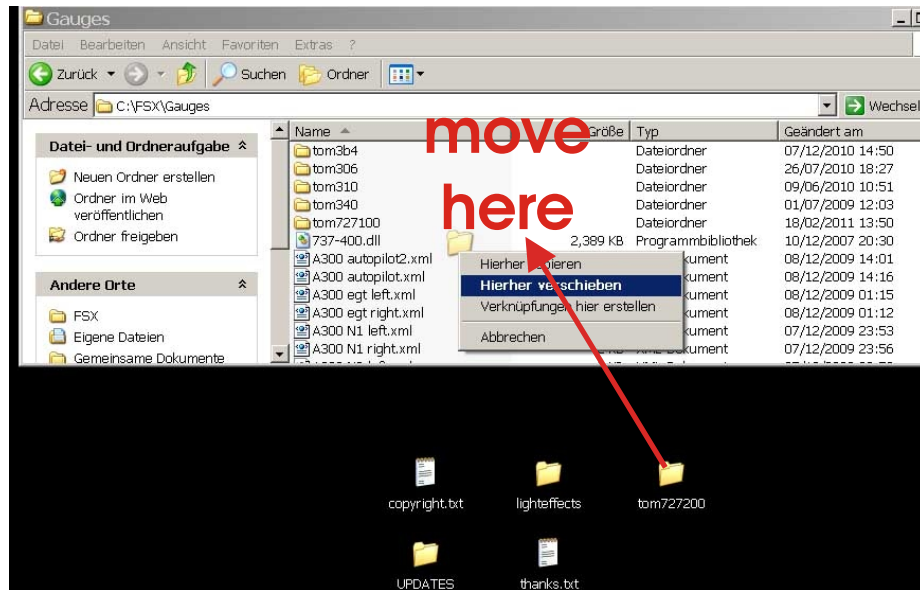
2) Move the complete **Tom_B727-200ADV** folder into your FSX/SimObjects/Airplanes folder.



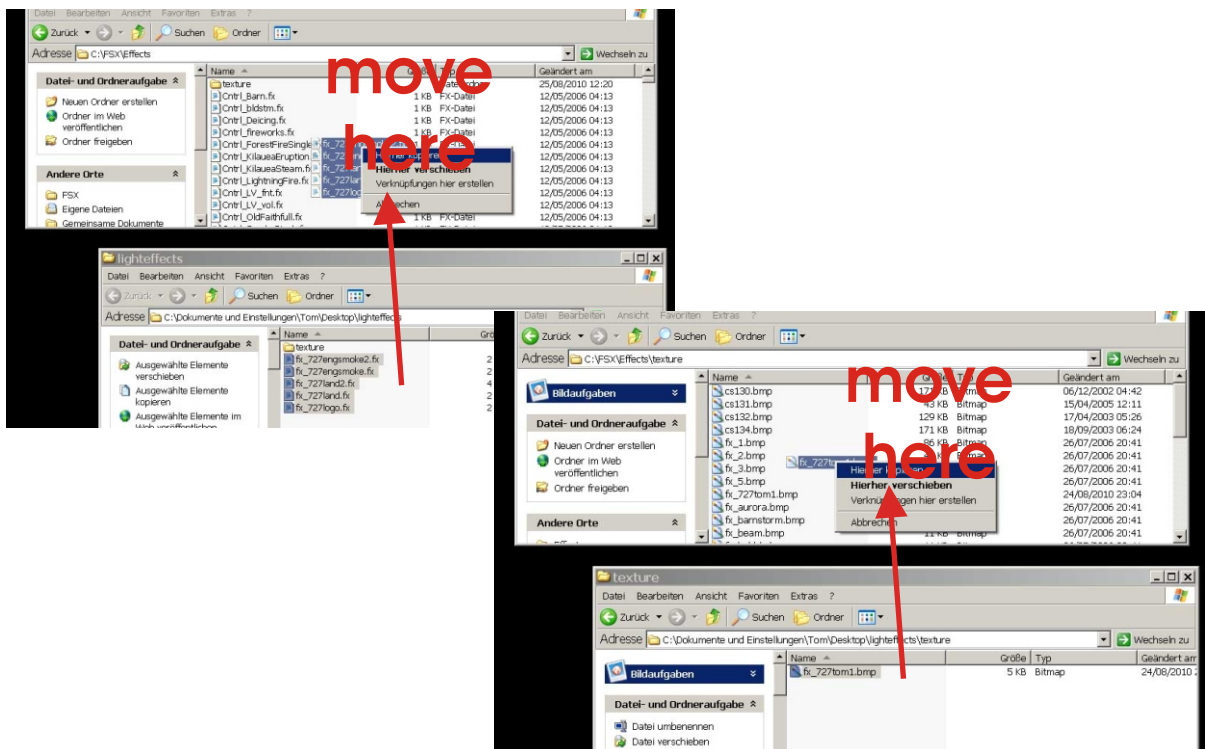
Tom 727-200ADV

Flight Crew Manual FCM

- 3) Move the complete **tom727200** folder into your FSX/Gauges folder.



- 4) Move all .fx files from the **lighteffects** folder into your FSX/Effects folder. Move the **fx_727tom1.bmp** file into your FSX/Effects/texture folder.

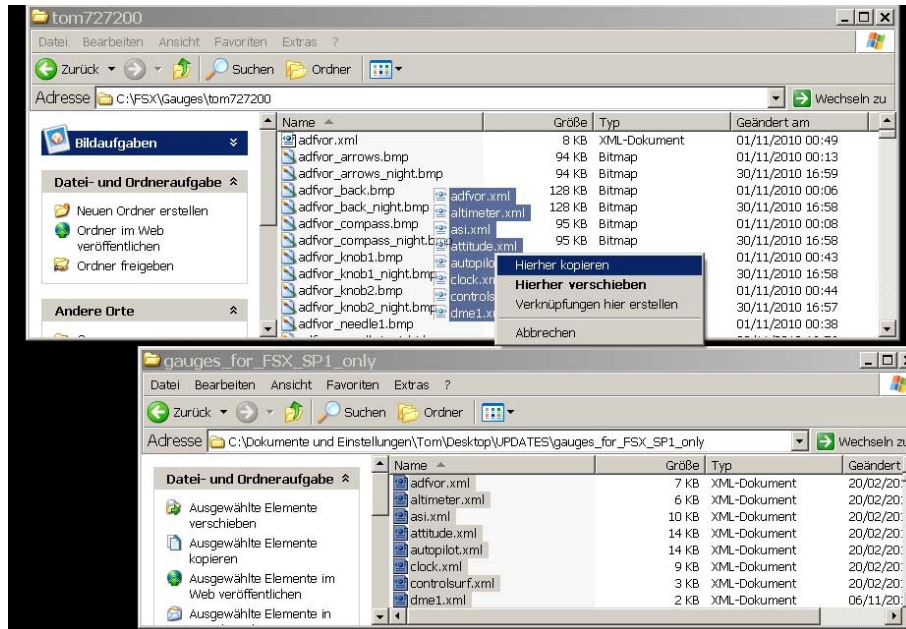


Version 1.0 01/2011

Tom 727-200ADV

Flight Crew Manual FCM

Attention Service Pack 1 users: If some of the gauges in the Panel and the VC are missing, copy all files from the `..\UPDATES\gauges_for_FSX_SP1_only` folder into your `FSX\gauges\tom727200` folder overwriting the existing files. The new xmls don't have Tooltips which can cause problems with SP1.



5. KnownBugs

- 1) Disappearing or flashing lights:
Try to increase the "NUM_LIGHTS" in the fsx.cfg from 8 to 10
- 2) P****panel
Deleted due to lack of humor.
- 3) The flightmodel is not as good as it should be since i am not an FDE specialist, so this is all i can do for now. Feel free to change whatever you want.
- 4) Multiplayer : The Aircraft should be multiplayer compatible by default
- 5) Repaints. Repaint resources are not included. Use the Paintkit from my previous release, the files of the ADV version are identical. Freeware repaints are allowed. Read the copyright.txt which is included in the main zip file.

YOU NEED AT LEAST FSX SERVICE PACK 1 OR 2 TO RUN THIS AIRCRAFT.
IF YOU DONT HAVE A SERVICE PACK INSTALLED, THE AIRCRAFT WILL STAY TRANSPARENT OR BLACK EXCEPT FOR THE COCKPIT AND WINGS

Version 1.0 01/2011