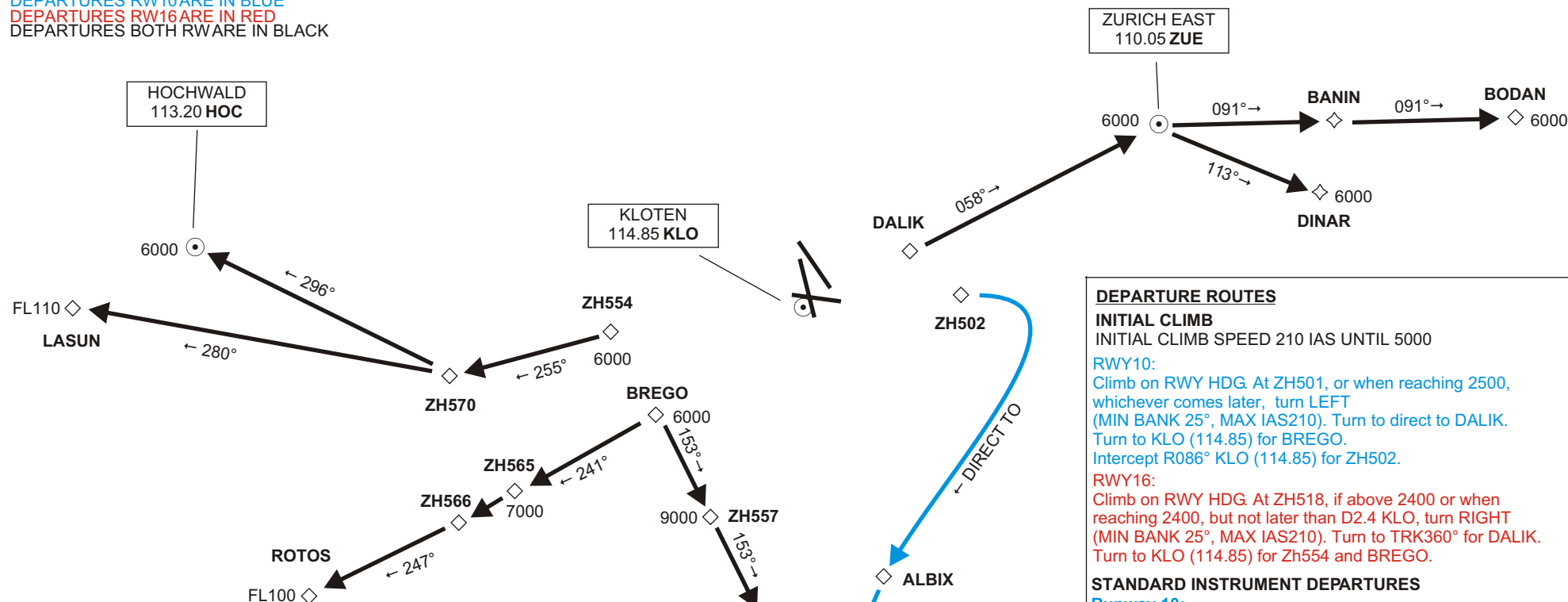


Zürich Approach	118.000	Zürich Center	128.050
Zürich Tower	118.100	Zürich Departure	127.750
Zürich Ground	121.900		
Zürich Clearance	126.220		

DEPARTURES RW10 ARE IN BLUE
DEPARTURES RW16 ARE IN RED
DEPARTURES BOTH RW ARE IN BLACK

Not to Scale**DEPARTURE ROUTES****INITIAL CLIMB**

INITIAL CLIMB SPEED 210 IAS UNTIL 5000

RWY10:

Climb on RWY HDG. At ZH501, or when reaching 2500, whichever comes later, turn LEFT (MIN BANK 25°, MAX IAS210). Turn to direct to DALIK. Turn to KLO (114.85) for BREGO. Intercept R086° KLO (114.85) for ZH502.

RWY16:

Climb on RWY HDG. At ZH518, if above 2400 or when reaching 2400, but not later than D2.4 KLO, turn RIGHT (MIN BANK 25°, MAX IAS210). Turn to TRK360° for DALIK. Turn to KLO (114.85) for ZH554 and BREGO.

STANDARD INSTRUMENT DEPARTURES**Runway 10:**

BODAN4G PROC to DALIK-BODAN
DINAR3G PROC to DALIK-DINAR
GERSA3G PROC TURN to BREGO-GERSA
GERSA3H PROC to ZH502-GERSA
ROTOS3G PROC TURN to BREGO-ROTOS
LASUN3G PROC TURN to ZH554-LASUN
HOC3G PROC TURN to ZH554-HOC

Runway 16:

BODAN4U PROC TURN to DALIK-BODAN
DINAR3U PROC TURN to DALIK-DINAR
GERSA3U PROC TURN to KLO-BREGO-GERSA
ROTOS3U PROC TURN to KLO-BREGO-ROTOS
LASUN3U PROC TURN to KLO-ZH554-LASUN
HOC3U PROC TURN to KLO-ZH554-HOC

INITIAL CLIMB