

# ***RWControl V1.1 for Microsoft Flight Simulator 2002***

by Stefan Gallmann, Nov. 2002



## **1. What is *RWControl* ?**

It is a FS2002 module that simplifies the selection of voice communication channels using Roger Wilco© (by Gamespy Industries., see [www.rogerwilco.com](http://www.rogerwilco.com)) when flying online in the environment of either **VATSIM** (<http://www.vatsim.net>) or **IVAO** ([www.ivao.org](http://www.ivao.org)), the most popular "virtual air traffic network" providers.

Basically ***RWControl*** just acts in the background while flying, and monitors the COM1 frequency. Based on the current virtual air traffic network server information regarding active ATC (and voice capable) stations, ***RWControl*** will automatically dial in the corresponding Roger Wilco channel for the COM1 frequency. Not more. But can be helpful – everyone who was online on a final windy approach, bad visibility and got the ATC command to switch over to tower on freq xxx knows this issue...So it extends the functionality of SquawkBox V2.x (<http://www.simclients.com>).

Four gauges (in a COM radio style) are included which can be integrated into any panel to control ***RWControl*** and to monitor the current Roger Wilco channel.

Additionally, a remote utility is now provided that allows Roger Wilco running on a second PC that is networked with the FS2002 PC using the TCP/IP protocol.

## **2. Installation**

***RWControl*** simply consists of a module DLL "RWControl.dll" and a corresponding "RWControl.ini" file that are to be copied into the "MODULES" folder of FS2002.

If you want to use an ***RWControl***-gauge in your panel(s), copy "RWControl.gau" into the "GAUGES" folder of FS2002.

***Important: RWControl*** needs Peter Dowson's FSUIPC V2.92 or higher ! The V2.92 DLL is included in the ZIP file. If not already present or if an older version is installed, it has also to be copied into the "MODULES" folder of FS2002 !

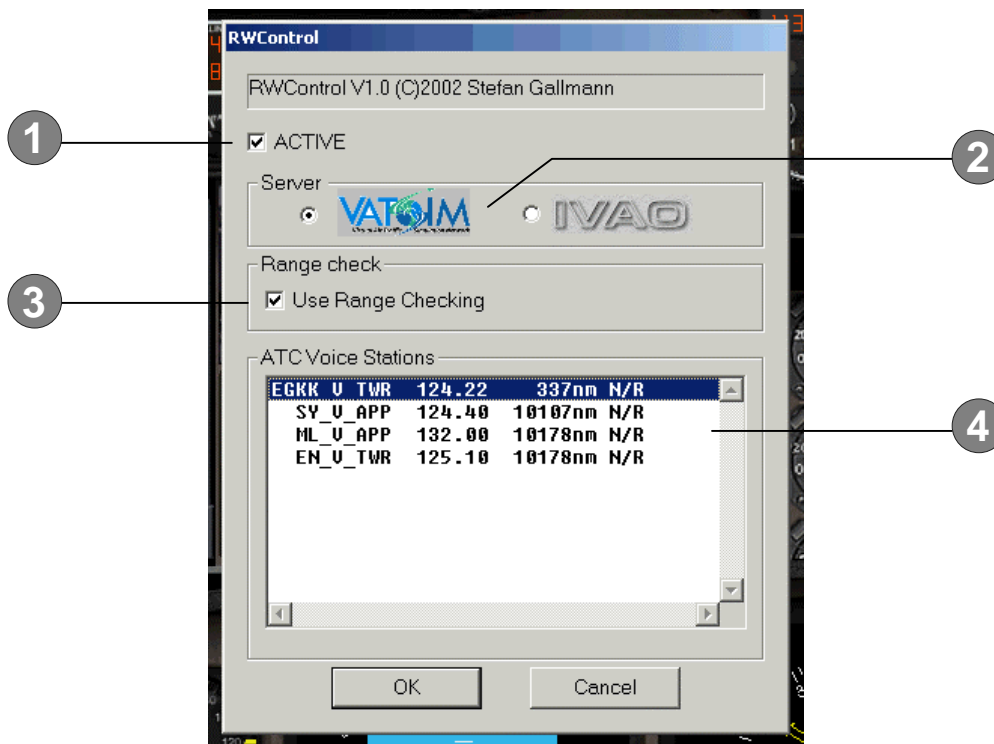
If you want to use the remote utility, copy the "RWRemote.exe" file to the PC where Roger Wilco is installed and start it there.

### 3. **RWControl** Dialog

After launching FS, **RWControl** is inactive by default. When you have established your internet connection (and any other step's for online flying), **RWControl** can be activated using it's dialog or by clicking the gauge switch (if installed).

To pop up **RWControl**'s dialog, either

- select "RWControl..." in the "Modules" menu of FS, or
- use the "ATC" invoke key together with the shift key



- (1) Check the **ACTIVE** marker to activate **RWControl**. Doing this the first time, no server connection has been established, thus the ATC Voice Stations list will display "server not yet connected".  
You can deactivate **RWControl** at any time—no automatic Roger Wilco channel setting will be performed then.
- (2) Here just select the server you are connected to for online flying.  
**RWControl** will dial in RW channels of this server, whether you are connected to it via Squawkbox or not – but be careful, if you contact ATC and are not logged into this server, the controller has no data about you – just your voice !
- (3) ATC stations have a visual range, depending on the facility type. If you like to have more realism, check this option. **RWControl** will then not dial in the ATC channel if your aircraft is not in range to it, but automatically connects if your aircraft gets into range. Uncheck it to have **RWControl** always dialing in the ATC station.
- (4) This is the list of available ATC voice station of the selected server at the time the dialog pops up. Per station it lists the callsign, the frequency, it's distance to your aircraft, and shows "N/R" if the stations is currently not in range.  
As long as this dialog is opened, **RWControl** will not update the station list !  
Use the <up> / <down> arrow key to mark a station.  
By pressing <S>, **RWControl** will set the COM1 frequency to the frequency of this station, and the dialog is closed.  
If there is an error connecting a server, this list will display an error message.

#### 4. Using the gauges

Four gauges (in a COM radio style) are included which can be integrated into any panel to control **RWControl** and to monitor the current Roger Wilco channel.

To use any of the two gauges, you have to integrate one in a panel of your choice.

This is not a standard user procedure – and not recommended by Microsoft – but done by every panel designer. There are nice tools by Ed Struzynski to handle this that I would recommend (see [www.cfgedit.com](http://www.cfgedit.com)).

Boeing style gauge



Collins style gauge



Airbus style Gauge



BAE style gauge



- (1) Use this switch to toggle **RWControl's** activation
- (2) Display; shows actual RW channel & COM frequency, or state message
- (3) This switch toggles the server
- (4) Ident button; shows the version of **RWControl** for a few seconds

## 5. Roger Wilco remote control

If you want to have Roger Wilco running on a second machine, you can use the **RWRemote** utility to have Roger Wilco remote controlled by **RWControl**. To do so, ensure that

- the second PC has the TCP/IP protocol installed and is connected to your FS2002 PC.
- Roger Wilco is properly setup on this machine
- **RWRemote** utility "RWRemote.exe" is running on this machine.

**RWRemote** is a system tray application that runs in the background. The system tray icon shows the connection status:



Not connected to **RWControl**



Connected to **RWControl**

If you click on the Icon, it just shows a menu to exit.

On the FS2002 machine, edit the "RWControl.ini" file (located in the MODULES folder):

```
[REMOTE]
Remote=ON
RemoteAddress=www.xxx.yyy.zzz
```

"www.xxx.yyy.zzz" stands for the IP address of your Roger Wilco PC.

## 6. Trouble shooting

1. Either **RWControl** or **RWRemote** starts with an Error message "Roger Wilco not found !"

A. **RWControl** checks for a registry key to find the Roger Wilco path:

HKEY\_LOCAL\_MACHINE\SOFTWARE\Microsoft\Windows\App Paths\roger.exe

The default value of this key is the path to the Roger Wilco executable.

This key is usually created by the Roger Wilco Setup program, but may lack if Roger Wilco is just copied from one machine to another.

B. This registry key value points to a different path because Roger Wilco was moved to an other drive or folder.

You can re-install Roger Wilco, or manually edit the registry to correct the path entry.

2. Either **RWControl** or **RWRemote** starts with an Error message "Error initializing Remote Control"

You have activated the remote control in the "RWControl.ini" file, but **RWControl** or **RWRemote** failed to access the IP socket functions.

Check for correct TCP/IP settings in the networking options.

That's it. I hope you enjoy **RWControl** !

---

Stefan Gallmann, November 2002

Any feedback and comments can be sent to : [sgallmann@wtal.de](mailto:sgallmann@wtal.de)

## *Version history*

---

- V1.1 :   Added:       Two additional gauges in Airbus and BAe style;  
                      RWRemote utility (Roger Wilco remote control support);  
          Fixed:       At some (proxy-ed) systems it happened that RWControl  
                          read cached versions of server data after initialization, so the list  
                          of ATC stations was always identical.  
          Changed:    At FS startup, RWControl checks for existence of "roger.exe" as provided  
                          in the registry. An error message is displayed in the case of non-existence.
- V1.0 :               First release