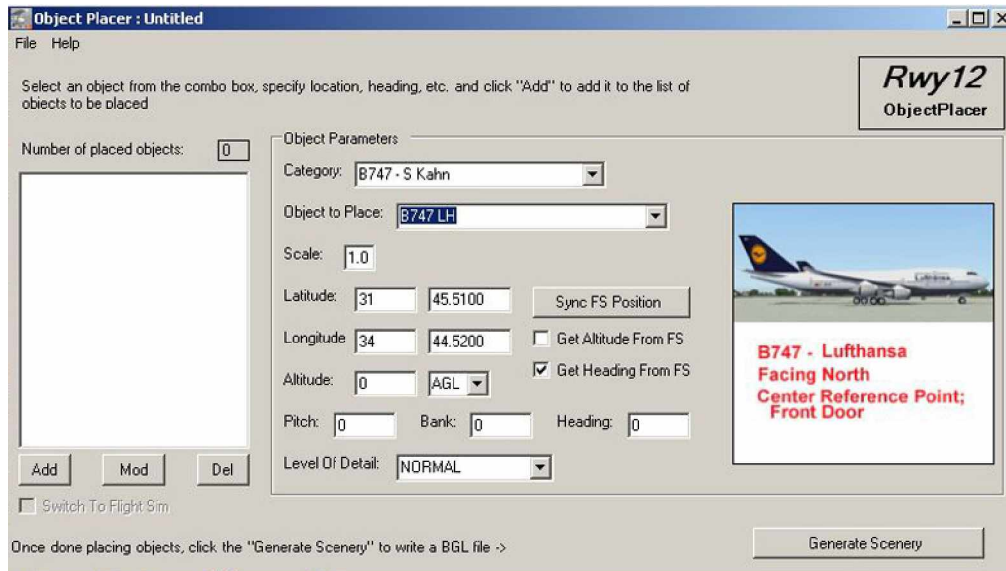


# Rwy12 ObjectPlacer v1.2 Libraries Installation



## 1. Version 1.2

This version includes the program and all 39 libraries published so far. The download is divided into 4 zip files because of the total size;

[rwy12\\_Program\\_v1.2.zip](#) – the program with documentation

[rwy12\\_Lib1\\_v1.2.zip](#) – object libraries part 1

[rwy12\\_Lib2\\_v1.2.zip](#) – object libraries part 2

[rwy12\\_Lib3\\_v1.2.zip](#) – object libraries part 3

Many members of our community don't have yet a broad band connection so the maximum size of one zip file should not be higher than 50 mb. Anyway, to enjoy the full capacity of Rwy12, you have to download and install all 4 files.

You will find in the **Libraries txt Files** folder of each library zip file the txt files that came originally with each library download. You can use these files in case something is not clear to you about a certain library or object. You can also find there the e-mail of the authors.

## 2. Installation

### Rwy12 Object Placer Library Installation for Those who already have Rwy12;

The download has 39 object libraries in 3 zip files. You must install all of them in order to make Rwy12 work properly. #1 library is the basic library and #2 and #3 are additions that will be installed differently.

Download the 3 library zip files and unzip them to any temp folder (except in FS9). Once unzip, please do the following;

1. Delete your old Static Objects Library folder (back it up if you feel better that way) which is probably located here (or on a different drive, where your flight simulator may reside):  
C:\Program Files\Microsoft Games\Flight Simulator 9\Addon Scenery\Static Objects Library.
- 2 **rwyl2\_lib1\_v1.2** - Copy the entire **Static Objects Library** folder to C:\Program Files\Microsoft Games\Flight Simulator 9\Addon Scenery. (C:\ is the drive where you have your FS9. If different – change the paste target). Keep documentation, if any, somewhere else.
- 3 **rwyl2\_lib2\_v1.2** – copy only the **Scenery files** and **Texture files** (not the folders) into the newly created Microsoft Games\Flight Simulator 9\Addon Scenery\Scenery (and into Files\Microsoft Games\Flight Simulator 9\Addon Scenery\Texture). You may be asked to overwrite some texture files, Please do so.
- 4 **rwyl2\_lib3\_v1.2** – same as 2 above.  
  
Keep documentation, if any, somewhere else.
5. Assuming you have installed the program itself and the third party programs, according to the instruction in the **program** download and your **Object Placer Library** is **activated** as a new scenery in FS9 (see installation instructions in the Program download), you are ready now to use Rwy12.

### **Rwyl2 Object Placer Library Installation for New Users of Rwy12;**

The download has 39 object libraries in 3 zip files. You must install all of them in order to make Rwy12 work properly. #1 library is the basic library and #2 and #3 are additions that will be installed differently.

Download the 3 library zip files and unzip them to any temp folder (except in FS9). Once unzip, please do the following;

- 1 **rwyl2\_lib1\_v1.2** - Copy the entire **Static Objects Library** folder to C:\Program Files\Microsoft Games\Flight Simulator 9\Addon Scenery. (C:\ is the drive where you have your FS9. If different – change the paste target). Keep documentation, if any, somewhere else.
- 2 **rwyl2\_lib2\_v1.2** – copy only the **Scenery files** and **Texture files** (not the folders) into the newly created Microsoft Games\Flight Simulator 9\Addon

Scenery\Scenery (and into Files\Microsoft Games\Flight Simulator 9\Addon Scenery\Texture). You may be asked to overwrite some texture files, Please do so.

- 3 **rwyl2\_lib3\_v1.2** – same as 2 above.

Keep documentation, if any, somewhere else.

4. Assuming you have installed the program itself and the third party programs, according to the instruction in the **program** download and activated **Object Placer Library** as a new scenery in FS9 (see installation instructions in the Program download), you are ready now to use Rwy12.

### **3. Un-Installation of Rwy12 Libraries**

Open **FS2004** and go to **Setting\Scenery Library\Delete Area** , and delete the **Static Objects Library**

Delete all files created in (X):\Program Files\Microsoft Games\Flight Simulator 9\addon scenery\scenery and \texture.

### **4. Copyrights and Acknowledgments**

(c) 2004 ObjectPlacer and libraries by Seev Kahn are copyright of Israel Roth and Seev Kahn - Rwy12

1. The ObjectPlacer program and attached files are FREEWARE and it is forbidden to make them part of any commercial package or activity, without the content of the authors (us and others, if they stated so in their upload)

2. We can be contacted by e-mail [zeevkahn@hotmail.com](mailto:zeevkahn@hotmail.com) and [israel\\_roth@hotmail.com](mailto:israel_roth@hotmail.com) or via our web site, which also have an active forum; <http://www.rwy12.com/> We can not promise technical assistance on a regular basis, but we will be happy to get some feedback.

3. There is no warranty either express or implied covering this product.

4. Acknowledgments and thanks:

To **Microsoft** corporation for the wonderful game called **FS9**

Special thanks go to **Pete Dowson** who allowed us to use his **FSUIPC** program, which establishes the link between **FS 2004** and **Object Placer**. This program is a keystone for FS users and has much more in it over what we used. We included, in

the **Documentation** folder of **Rwy12**, the **User Guide** of **FSUIPC** ver 3.40 (in **PDF** format) for your convenience so you can learn more about this utility.

To **Discreet** for making the freeware **gmax** program

To **Lee Swordy** for his **AFCAD** program,

To **all the authors and additional contributors of libraries** (more about co-workers' names who worked with the creators of the libraries can be seen in the txt files of each library).

<b>Lib File #</b>	<b>Library Name</b>	<b>Authors &amp; Additional Contributors (Please see also the txt file)</b>	<b>Original Download File</b>
1	Vehicles	Israel Roth and Seev kahn, Team Rwy12	rwyl2_v1.zip & rwyl2_v1.1.zip
1	Airport Buildings and Facilities	Israel Roth and Seev kahn, Team Rwy12	rwyl2_v1.zip & rwyl2_v1.1.zip
1	Geberal Buildings	Israel Roth and Seev kahn, Team Rwy12	rwyl2_v1.zip & rwyl2_v1.1.zip
1	Navaid's	Israel Roth and Seev kahn, Team Rwy12	rwyl2_v1.zip & rwyl2_v1.1.zip
1	Port and Sea	Israel Roth and Seev kahn, Team Rwy12	rwyl2_v1.zip & rwyl2_v1.1.zip
1	Humans – S. Kahn	Seev kahn, Team Rwy12	rwyl2_v1.1.zip
1	Trees – S. Kahn	Seev kahn, Team Rwy12	rwyl2_v1.1.zip
1	Refuelers – S. Kahn	Seev kahn, Team Rwy12	rwyl2_v1.1.zip
1	General Aviation Aircraft – S. Kahn	Seev kahn, Team Rwy12	rwyl2_v1.1.zip
2	B747 – S Kahn	Israel Roth and Seev kahn, Team Rwy12	b747_rwyl2.zip
1	Chopper Pads – Lt Finney	Robert Finnegan, Chris O'Donnell	rwyl2-chopper_tower.zip & chopper_pads.zip
1	Chopper Trailers - Lt Finney	Robert Finnegan, Chris O'Donnell	chopper_trailers.zip
1	ESDG-HangerKit – B. Leaming	Bill Leaming, Eaglesoft Development Group	esdg_hanger_rwyl2.zip & esdg_ramplight_rwyl2.zip
1	Fencing – S. Ansari	Shehryar Ansari & William Sieffert	rwyl2_v1.1.zip
1	Ford Transits – S. Legg	Stephen Legg	ford_transit_collection.zip & transits4rway12.zip
1	GA-Hangers_lib Stephen Legg	Stephen Legg, Arno Gerretsen & Steve Ziegler	ga-hangers_lib_for_rwyl2.zip
2	Jetways – S. Ansari	Shehryar Ansari and Bill Sieffert	rwyl2_v1.1.zip
1	Lens Hanger 1 – L.J. Hickman	Len Hickman	lens_hanger_1.zip (Download from; <a href="http://www.lenshanger.co.uk">www.lenshanger.co.uk</a> )
1	Tents – T Lucas	Todd Lucas	tents_todd_lucas.zip & picnic_items.zip
1	Margarita Air – T Lucas	Todd Lucas	N.A.
2	AutoGen Tree Library – Arno Gerretsen	Arno Gerretsen, Stephen Legg	ag_tree_lib11.zip

2	Dwag objects (signs)	Dennis Waggoner	rwyl2_dwag.zip
2	Objects01_lib By S. Legg	Stephen Legg	objects01_lib.zip & objects01_lib_supplement.zip
2	People – Geoff Williams	Geoff Williams & Martin Strong	peepslib.zip
2	Static Helicopters - Allen Richards	M. Allen Richards, Chris O'Donnell	rwyl2-static_choppers.zip
2	Fly Tampa Static Aircraft - By S. Legg	Stephen Legg, Martin Brunken & Arno Gerretsen	flytampastaticaircraft_lib_for_rwyl2.zip
2	Birmingham Power Lines - B. Pierce, A. Sventon	Brittany Pierce, Argus Sventon	powerlineobjects.zip
2	Ships Winfried Orthmann	Winfried Orthmann, Team Rwy12	shiplib_1.0.zip
2	Birds – S. Kahn	Seev Kahn - Rwy12 team	birds_1.0.zip
2	dwag_hangers	Dennis Waggoner	dwag_hangers.zip
2	Hot Air Balloons – S. Kahn	Seev Kahn - Rwy12 team	balloons_1.0.zip
3	Lens Hanger 2 – L.J. Hickman	Len Hickman	lenshanger_2.zip
3	Lens Hanger 3 - L.J. Hickman	Len Hickman	lenshanger_3.zip
3	Jon Patch_objects_1	Gary Mills, Jon Patch & Winfried Orthmann	ve4_r12.zip
3	Jon Patch_objects_2	Gary Mills, Jon Patch & Marci Dunn	ve4_r12.zip
3	Lars ExtraObjects	Lars Hoyer & Irvin McIntyre	extra_objects_v1_1.zip
3	Maintenance Platforms – C. Ford	Chuck Ford	rwyl2maintplatforms.zip
3	Livestock_Heath_Wells	Heath Wells & Clive Ryan	livestock_heath_wells.zip
3	shipping_containers_heath_wells	Heath Wells	shipping_containers_heath_wells.zip

When you first open your Rwy12 program (double click on the icon) you will see all 39 libraries in the drop down menu and in each of them all the objects (with picture);

## rwyl2\_Program Libraries Drop down

### Download

rwyl2_lib1	FS9 Vehicles
rwyl2_lib1	FS9 Airport Buildings and Facilities
rwyl2_lib1	FS9 General Buildings
rwyl2_lib1	FS9 Nav aids
rwyl2_lib1	FS9 Port and Sea
rwyl2_lib2	Static Helicopters - M. Allen Richards
rwyl2_lib2	AutoGen Tree Library - Amo Gernets
rwyl2_lib2	Hot Air Balloons - S. Kahn
rwyl2_lib2	Birds - S. Kahn
rwyl2_lib2	Birmingham Power Lines - B. Pierce
rwyl2_lib1	Chopper Pads - Lt. Finney
rwyl2_lib1	Chopper Trailers - Lt. Finney
rwyl2_lib2	dwag_hangers
rwyl2_lib2	dwag_objects
rwyl2_lib1	ESDG Hander Kit - B. Leaming
rwyl2_lib2	FlyTampa Static Aircraft - By S.Legg
rwyl2_lib1	Ford Transits - S. Legg
rwyl2_lib1	GA-Hangers_lib Stephen Legg
rwyl2_lib2	Ships - Winfried Orthmann
rwyl2_lib2	Jetways - S. Ansari
rwyl2_lib3	JonPatch_objects_1
rwyl2_lib3	JonPatch_objects_2
rwyl2_lib3	Lars ExtraObjects
rwyl2_lib1	Lens Hanger 1 - L.J.Hickman
rwyl2_lib3	Lens Hanger 2 - L.J.Hickman
rwyl2_lib3	Lens Hanger 3 - L.J.Hickman
rwyl2_lib3	Livestock_Heath_Wells
rwyl2_lib3	Maintenance Platforms - C Ford
rwyl2_lib2	Objects01_lib By S.Legg
rwyl2_lib2	People - Geoff Williams
rwyl2_lib1	Refuelers - S Kahn
rwyl2_lib1	Fencing - S. Ansari
rwyl2_lib1	General Aviation Aircraft - S. Kahn
rwyl2_lib1	Humans - S. Kahn
rwyl2_lib1	Trees - Seev Kahn
rwyl2_lib3	Shipping_Containers_Heath_Wells
rwyl2_lib2	B747 - S Kahn
rwyl2_lib1	Margarita Air - T Lucas
rwyl2_lib1	Tents - T Lucas

**Israel Roth and Seev Kahn**

<http://www.rwyl2.com/>

Aug. 2005