

儀器進場圖  
INSTRUMENT  
APPROACH  
CHART

標高 31 呎  
ELEV 31 FT

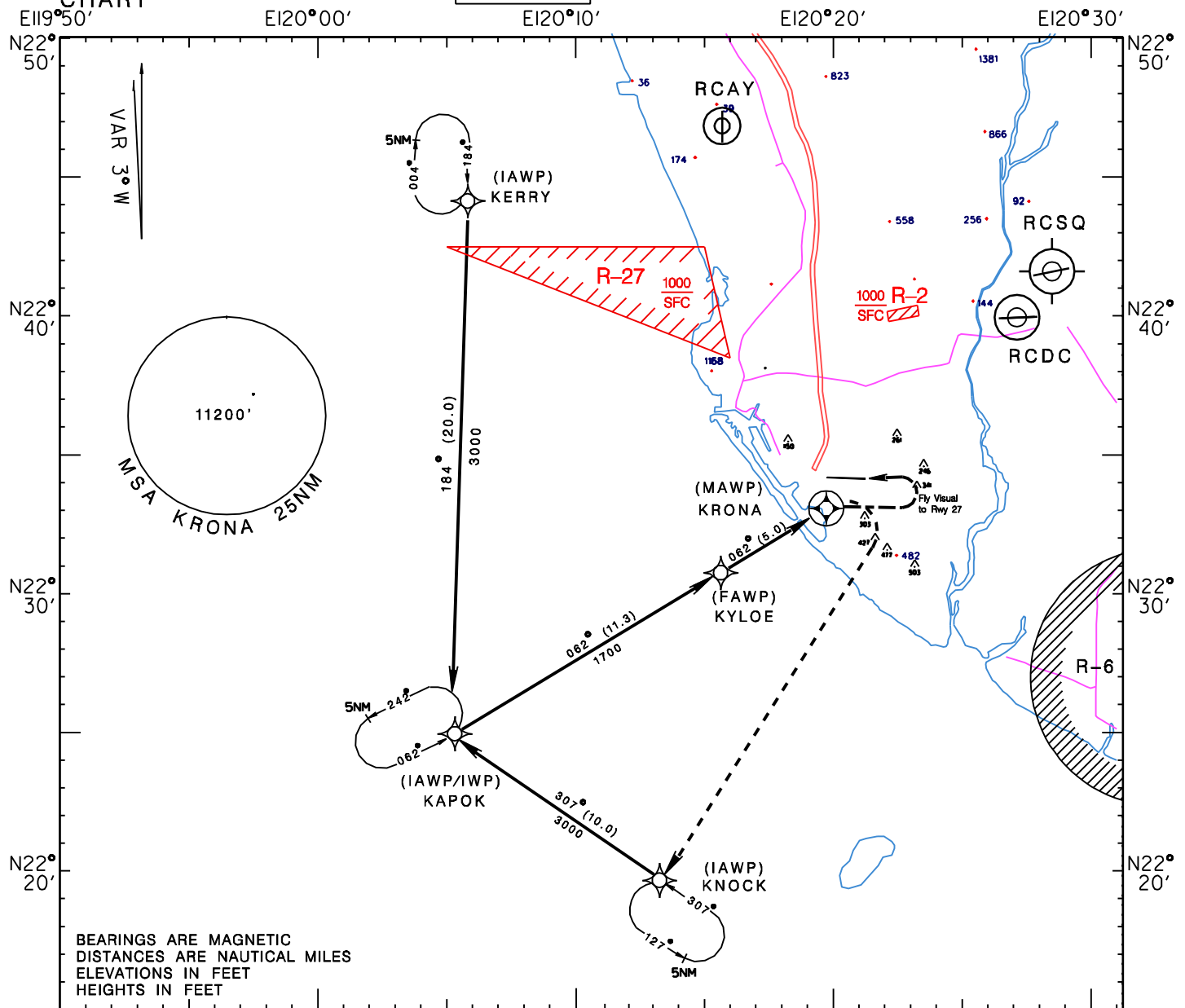
TWR	118.7	121.9
	121.5	236.6
APP	121.1	328.7
ATIS	127.8	

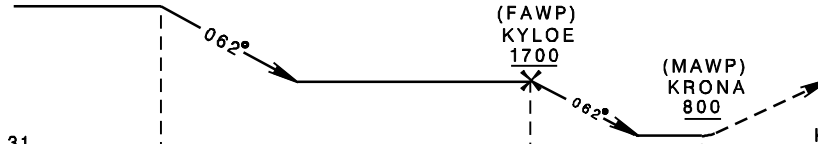
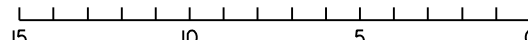
高雄 / 高雄國際機場

KAOHSIUNG/KAOHSIUNG INT'L AD

-RNAV(GNSS)-A

-RNAV(GNSS)-A



TA 11000						MISSED APCH: CLIMB RIGHT TURN TO 3000, DIRECT TO KNOCK WP AND HOLD.					
(IAWP) KERRY/KNOCK 3000			(IAWP/IWP) KAPOK 3000								
											
AD ELEV 31						KRONA IS 1.1NM ABEAM RWY.					
											
NAUTICAL MILES FROM KRONA											
MINIMA (MDA IN FT, VIS IN M, HAA IN FT)											
CATEGORY		A		B		C		D		NOTE: 1.CIRCLING TO RWY09 NOT AUTHORIZED. 2.CIRCLING NORTH OF THE AIRPORT NOT AUTHORIZED.	
CIRCLING		800/4000				769					

儀器進場圖  
INSTRUMENT  
APPROACH  
CHART

標高 31 呎  
ELEV 31 FT

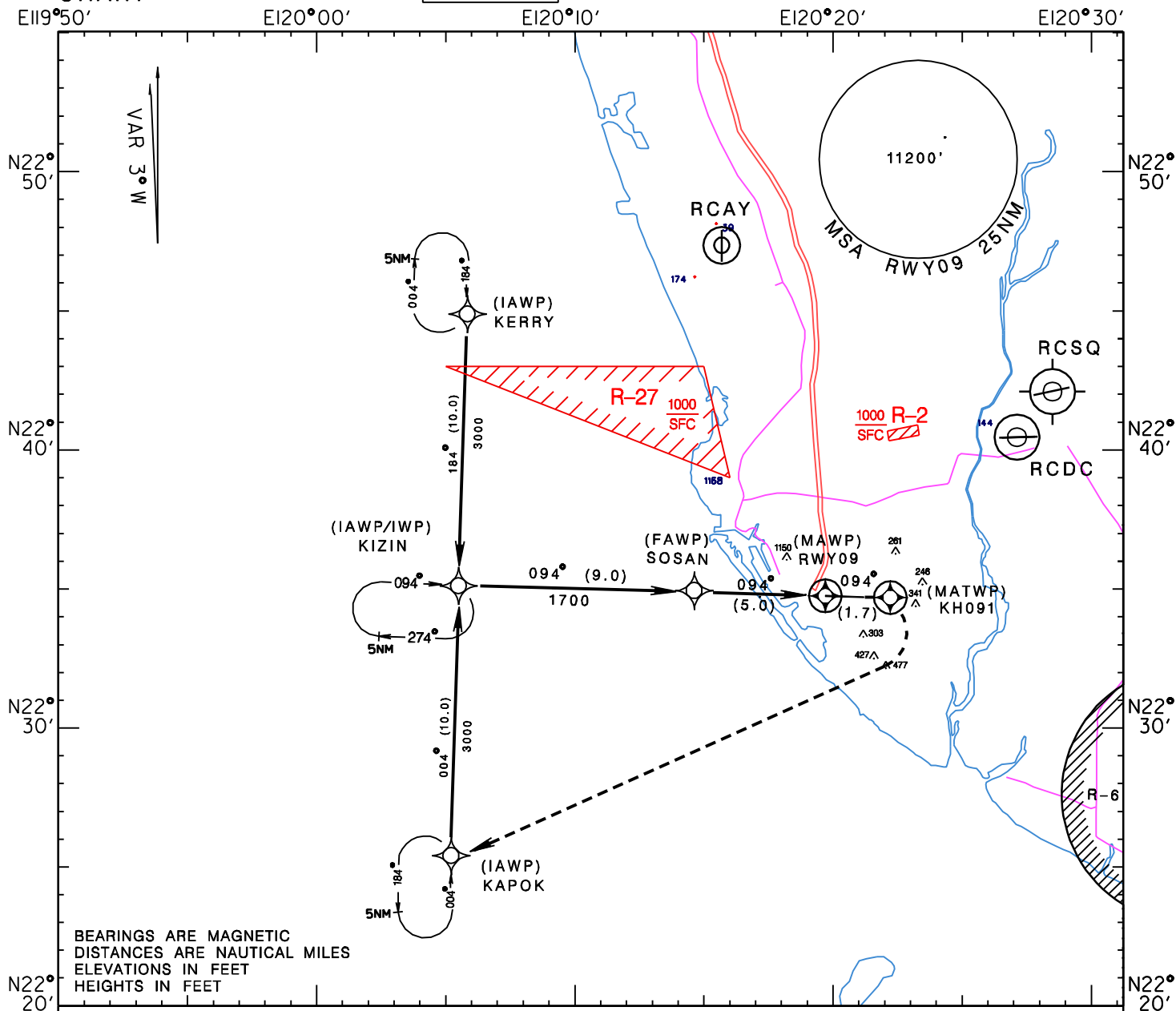
TWR	118.7	121.9
	121.5	236.6
APP	121.1	328.7
ATIS	127.8	

高雄 / 高雄國際機場

KAOHSIUNG/KAOHSIUNG INT'L AD

-RNAV(GNSS) RWY09

-RNAV(GNSS) RWY09



TA 11000

(IAWP) KERRY/KAPOK 3000  
(IAWP/IWP) KIZIN 3000

(FAWP) SOSAN 1700

THR ELEV 20  
TCH 53

RWY09 520

MISSED APCH:  
CLIMB VIA 094 COURSE  
UNTIL PASSING KH091 WP,  
THEN CLIMB RIGHT TURN TO  
3000, DIRECT TO KAPOK WP AND  
HOLD.

VDP: 1.4NM FROM RWY09

15 10 5 0 NM FROM RWY09

MINIMA (MDA IN FT, VIS IN M, HAT IN FT)

CATEGORY	A	B	C	D
STRAIGHT IN		520/1600	500	
APCH LGT OUT		520/2400	500	

NOTE:  
CIRCLING NOT AUTHORIZED.

儀器進場圖  
INSTRUMENT  
APPROACH  
CHART

標高 31 呎  
ELEV 31 FT

TWR	118.7	121.9
	121.5	236.6
APP	121.1	328.7
ATIS	127.8	

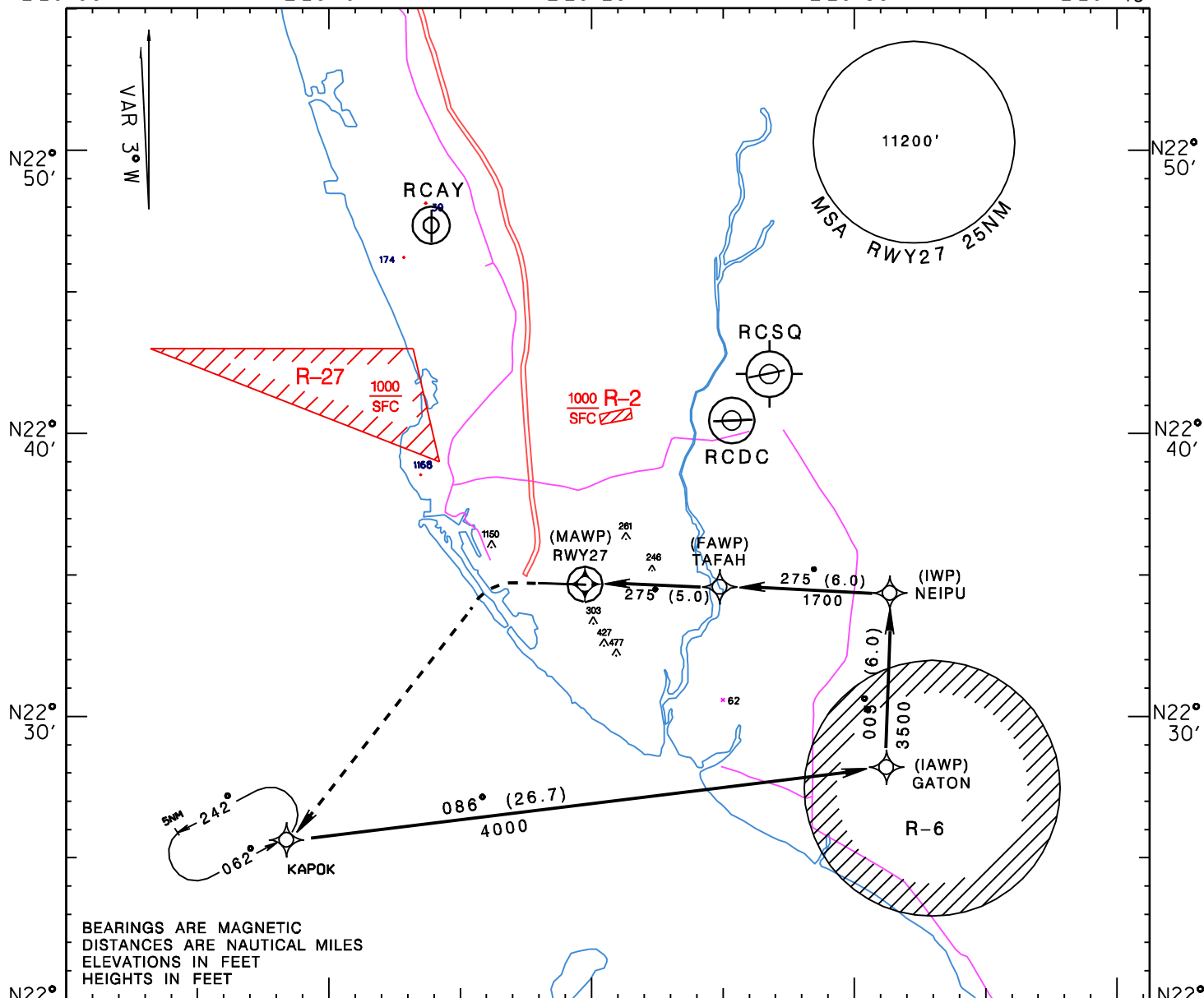
高雄 / 高雄國際機場

KAOHSIUNG KAOHSIUNG INT'L AD

-RNAV(GNSS) RWY27

-RNAV(GNSS) RWY27

E120°00' E120°10' E120°20' E120°30' E120°40'



TA 11000

MISSED APCH:  
CLIMB ON HEADING 275 UNTIL  
LEAVING 800, THEN TURN LEFT  
DIRECT TO KAPOK WP, MAINTAIN  
4000 AND HOLD.

THR ELEV 30  
TCH 50

VDP: 1.7NM FROM RWY27

3.05°

NM FROM RWY27

0 5 10 15

MINIMA (MDA IN FT, VIS IN M, HAT IN FT)

CATEGORY

A

B

C

D

STRAIGHT IN

620/2400

590

620/2800 590

NOTE:  
CIRCLING NOT AUTHORIZED.

# 儀器進場圖

INSTRUMENT  
APPROACH  
CHART

標高 31呎  
ELEV 31 FT

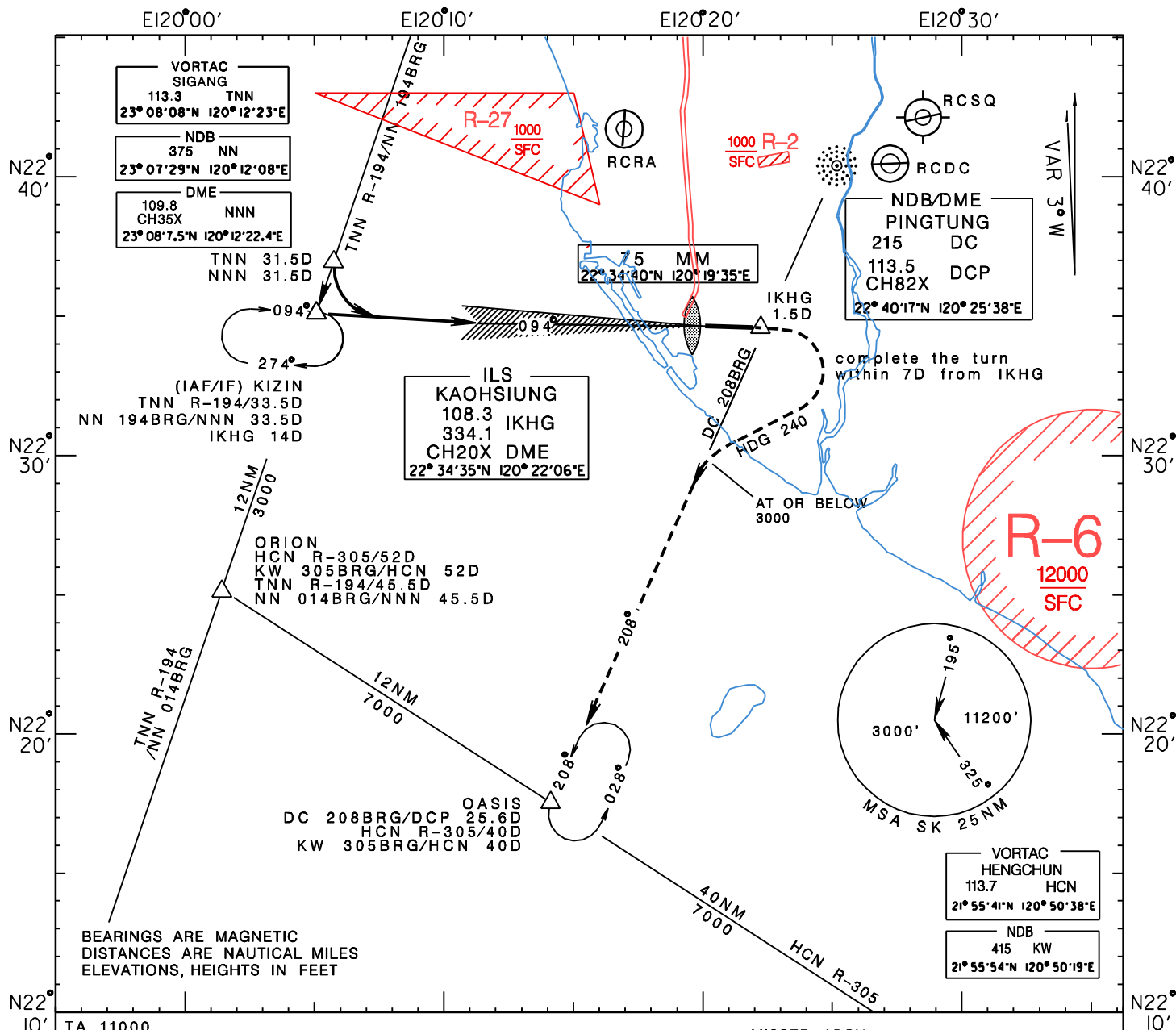
TWR 118.7 121.9  
121.5 236.6  
APP 121.1 328.7  
ATIS 127.8

高雄 / 高雄機場

KAOHSIUNG/KAOHSIUNG AD-ILS/DME Y RWY09

-ILS/DME Y RWY09

"IKHG" "DC"



TA 11000

(IAF/IF)  
KIZIN  
IKHG 14 D  
3000  
094°

(FAF)  
IKHG 5.2 D  
1700  
(1676)

(MAP)  
MM  
IKHG 0.7 D

MISSED APCH:  
CLIMB RWY HDG UNTIL PASSING  
IKHG 1.5 D, THEN TURN RIGHT HDG 240,  
COMPLETING THE TURN WITHIN 7 D  
FROM IKHG, TO INTERCEPT DC 208BRG  
AT OR BELOW 3000, PROCEED TO OASIS,  
MAINTAIN 4000 AND HOLD.

GP 3°  
TCH 53  
TDZ ELEV 24  
AD ELEV 31

15 10 5 0 NM FROM THRESHOLD

MINIMA (DA, MDA IN FT, VIS IN M, HAT/HAA IN FT)

CATEGORY		A	B	C	D
ILS	FULL	224/800 200	224/800 200	224/800 200	224/800 200
	ALS OUT	224/1200 200	224/1200 200	224/1200 200	224/1200 200
LLZ (GP OUT)	FULL	500/1200 476	500/1200 476	500/1200 476	500/1600 476
	ALS OUT	500/1600 476	500/1600 476	500/2000 476	500/2400 476
CIRCLING		600/3200 569	620/3200 589	660/3200 629	780/4000 749

NOTE:  
CIRCLING NOT AUTHORIZED  
NORTH OF RWY.

儀器進場圖  
INSTRUMENT  
APPROACH  
CHART

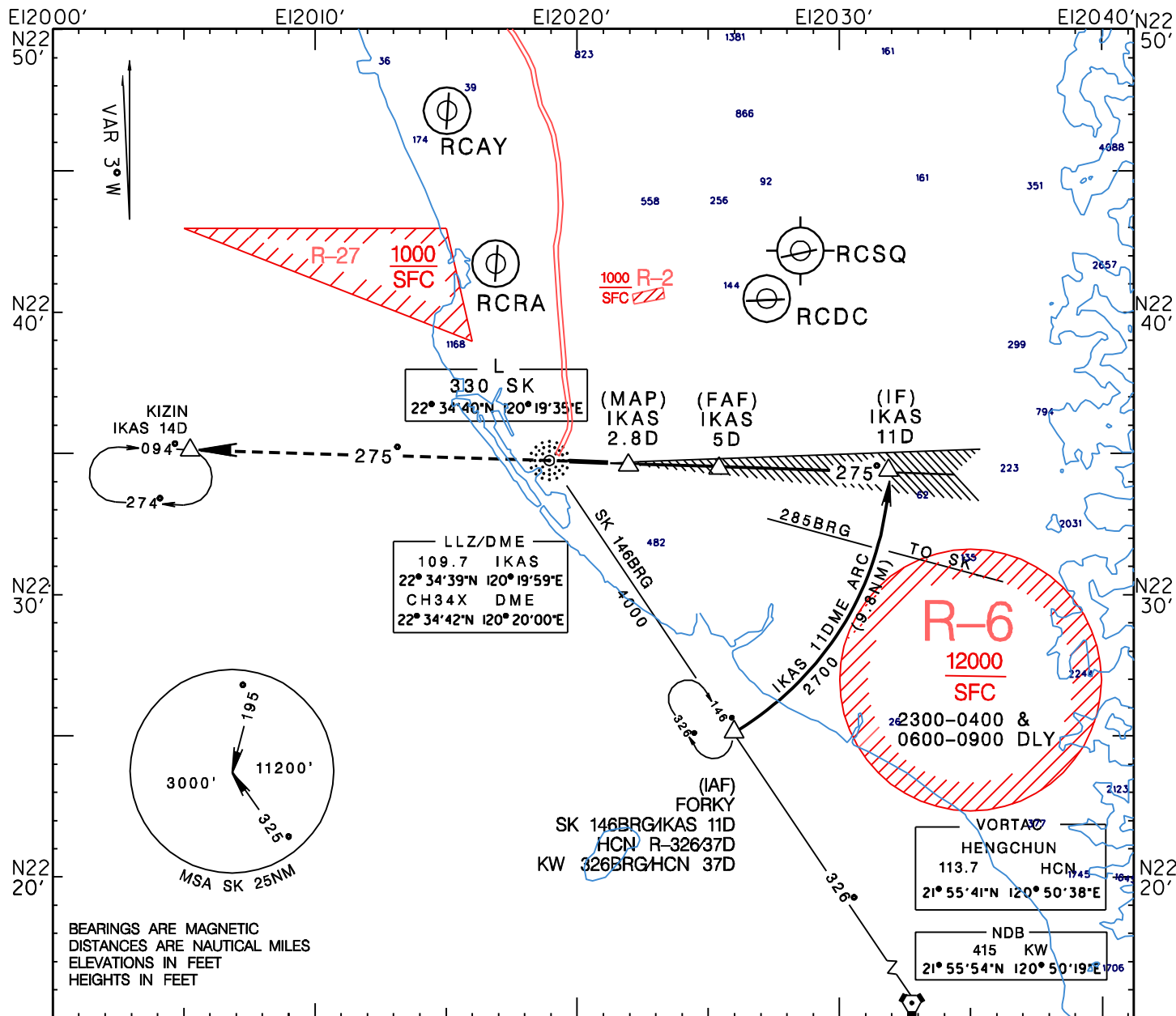
標高 31 呎  
ELEV 31 FT

TWR	118.7	121.9
APP	121.5	236.6
ATIS	121.1	328.7
	127.8	

高雄/高雄機場

KAOSIUNG/KAOSIUNG AD -LLZ/DME RWY27

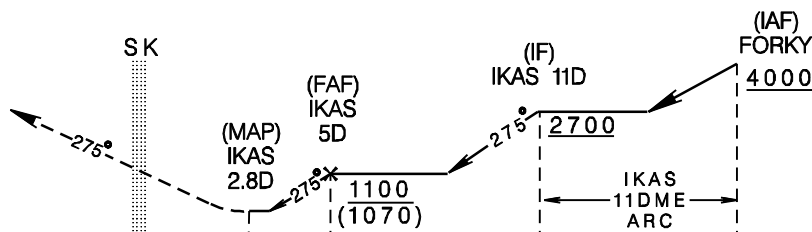
"IKAS"



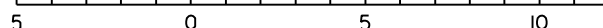
TA 11000

MISSED APCH:  
CLIMB DIRECT TO SK,  
THEN PROCEED VIA SK 275BRG TO  
KIZIN, MAINTAIN 3000 AND HOLD.

TDZ ELEV 30  
AD ELEV 31



NAUTICAL MILES  
FROM IKAS DME



MINIMA (MDA IN FT, VIS IN M, HAT IN FT)

CATEGORY	A	B	C	D
STRAIGHT IN	620/2000 590	620/2000 590	620/2400 590	620/2800 590

1. CIRCLING NOT AUTHORIZED.
2. THE INITIAL APCH ARC INFRINGES R-6 AREA, PRIOR COORDINATION WITH CAF WILL BE COMPLETED BY ATC BEFORE ISSUING CLEARANCE DURING R-6 ACTIVE HOURS.

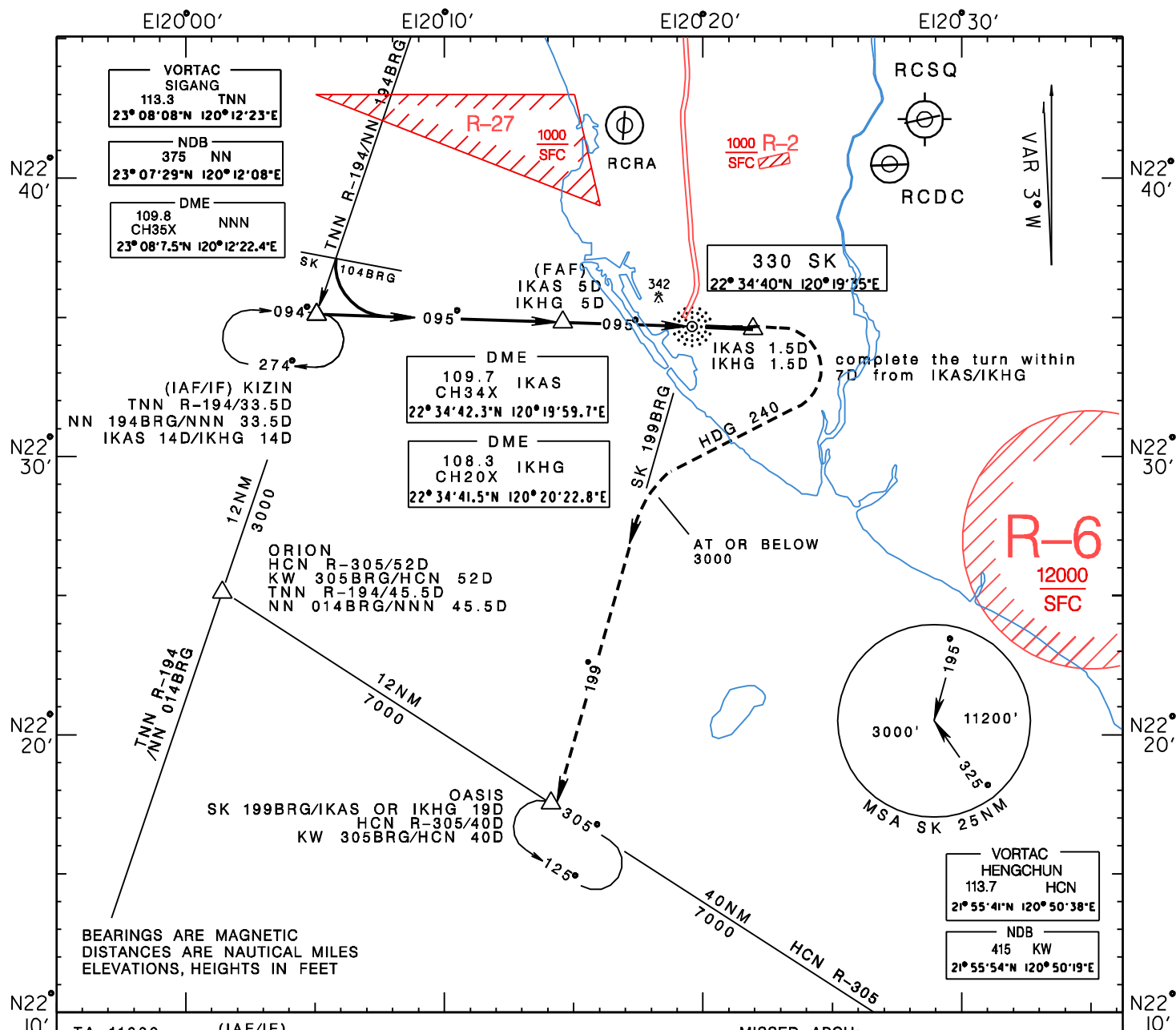
# INSTRUMENT APPROACH CHART

標高	31	呎
ELEV	31	FT

TWR	118.7	121.9
	121.5	236.6
APP	121.1	328.7
ATIS	127.8	

高雄／高雄機場

高雄 / 高雄機場 -NDB/DME RWY09  
 KAOHSIUNG/KAOHSIUNG AD-NDB/DME RWY09  
 "SK" "IKAS" or "IKHG"



MISSED APCH:  
CLIMB VIA SK 095BRG UNTIL PASSING  
IKHG/KAS 1.5D, THEN TURN RIGHT HEADING  
240, COMPLETING THE TURN WITHIN 7D  
FROM IKAS1KHG, TO INTERCEPT SK 199BRG  
AT OR BELOW 3000, PROCEED TO OASIS,  
MAINTAIN 7000 AND HOLD.

TA 11000

(IAF/IF)  
KIZIN  
KAS 14D  
KHG 14D

TDZ ELEV 24  
AD ELEV 31

(FAF)  
IKAS 5D  
IKHG 5D

(MAP)  
OK

$$\begin{array}{r} 1600 \\ \underline{(1576)} \end{array}$$

15 10 5 0 NM FROM IKAS/IKHG DME

MINIMA (MDA IN FT, VIS IN M, HAT/HAA IN FT)					NOTE: 1. CIRCLING NOT AUTHORIZED NORTH OF RWY. 2. CAUTION A 342-FT FERRIS WHEEL AT 310BRG 1.5NM FROM SK,
CATEGORY	A	B	C	D	
STRAIGHT IN	660/1600 636	660/1600 636	660/2000 636	660/2800 636	
APCH LGT OUT	660/1600 636	660/1600 636	660/2800 636	660/3200 636	
CIRCLING	660/3200 629	660/3200 629	660/3200 629	780/4000 749	

儀器進場圖  
INSTRUMENT  
APPROACH  
CHART

標高 31 呎  
ELEV 31 FT

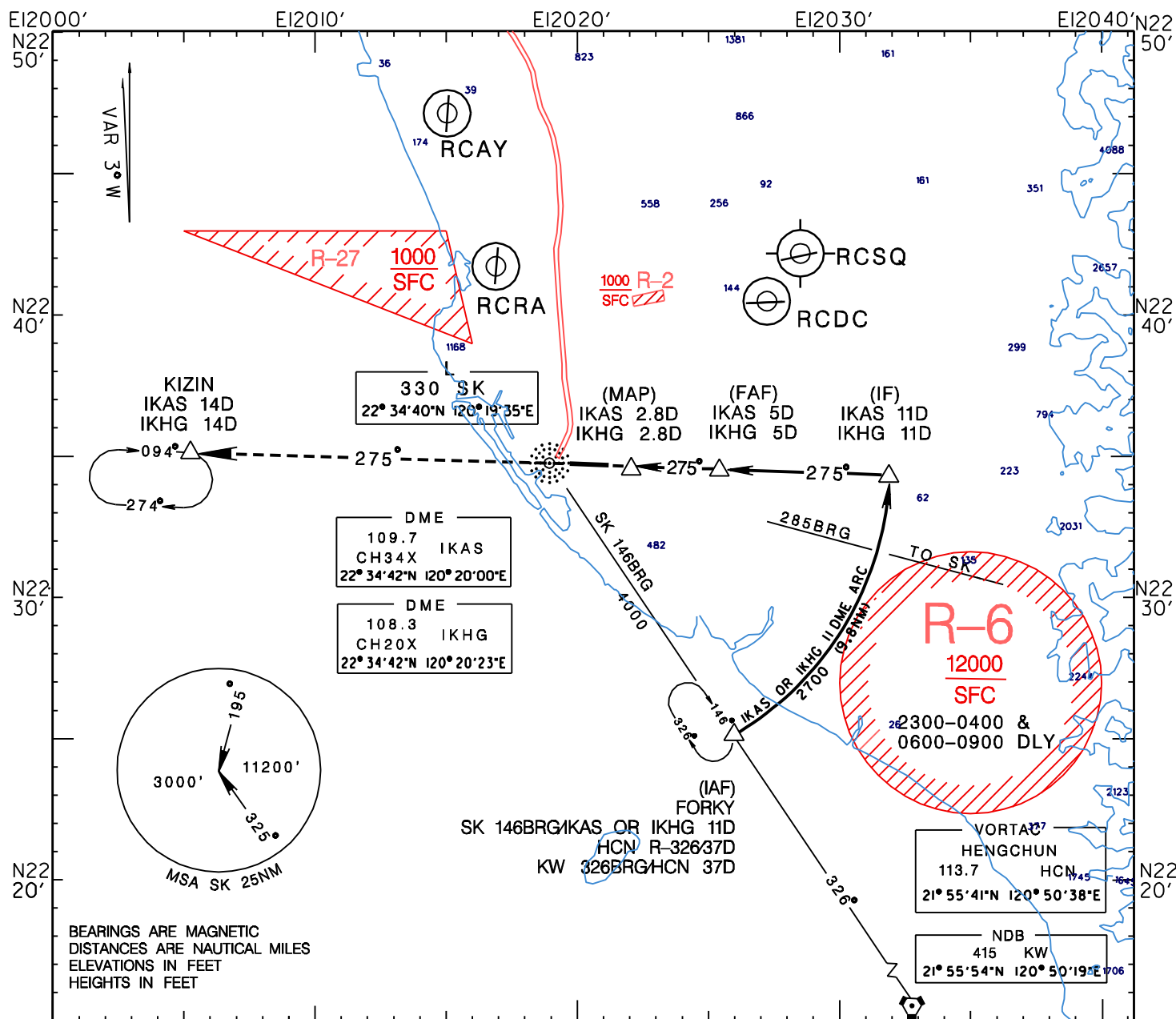
TWR 118.7 121.9  
121.5 236.6  
APP 121.1 328.7  
ATIS 127.8

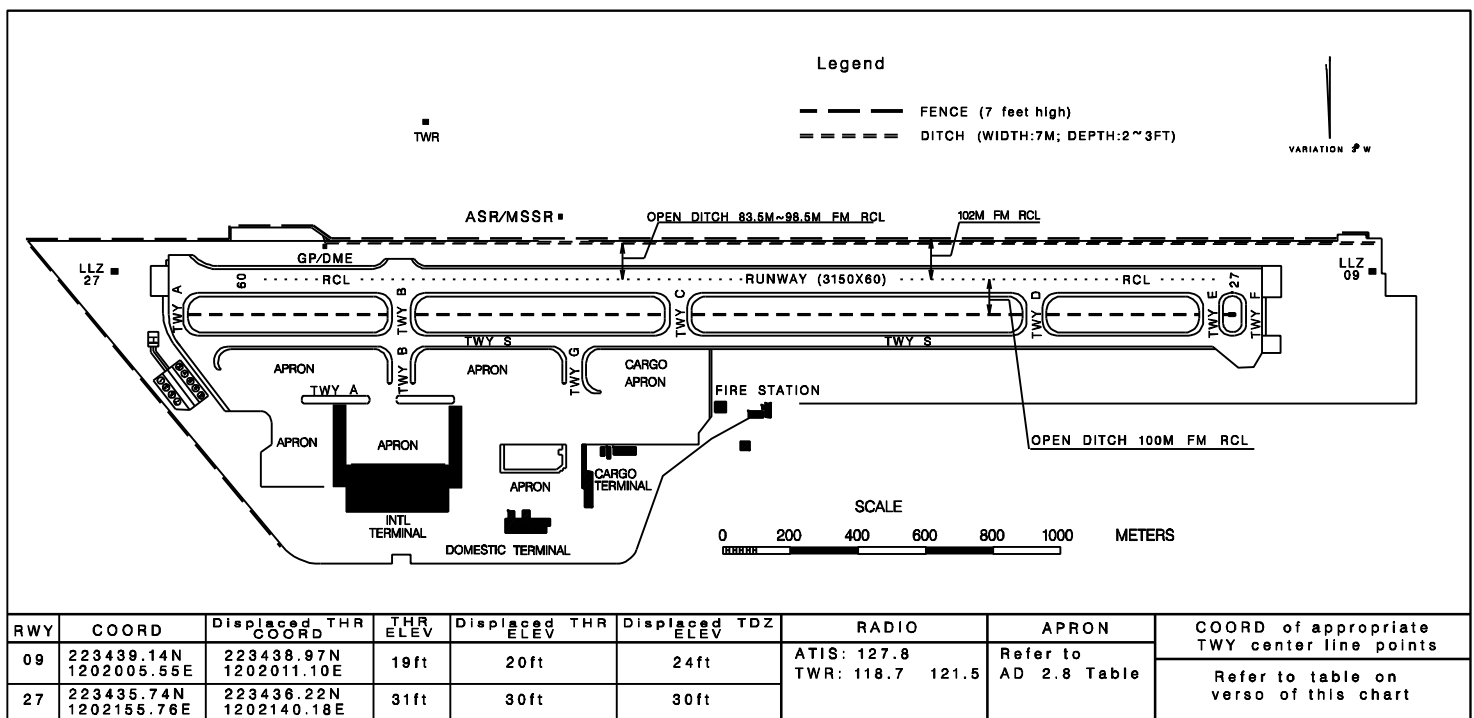
高雄/高雄機場

-NDB/DME RWY27

KAOSIUNG/KAOSIUNG AD -NDB/DME RWY27

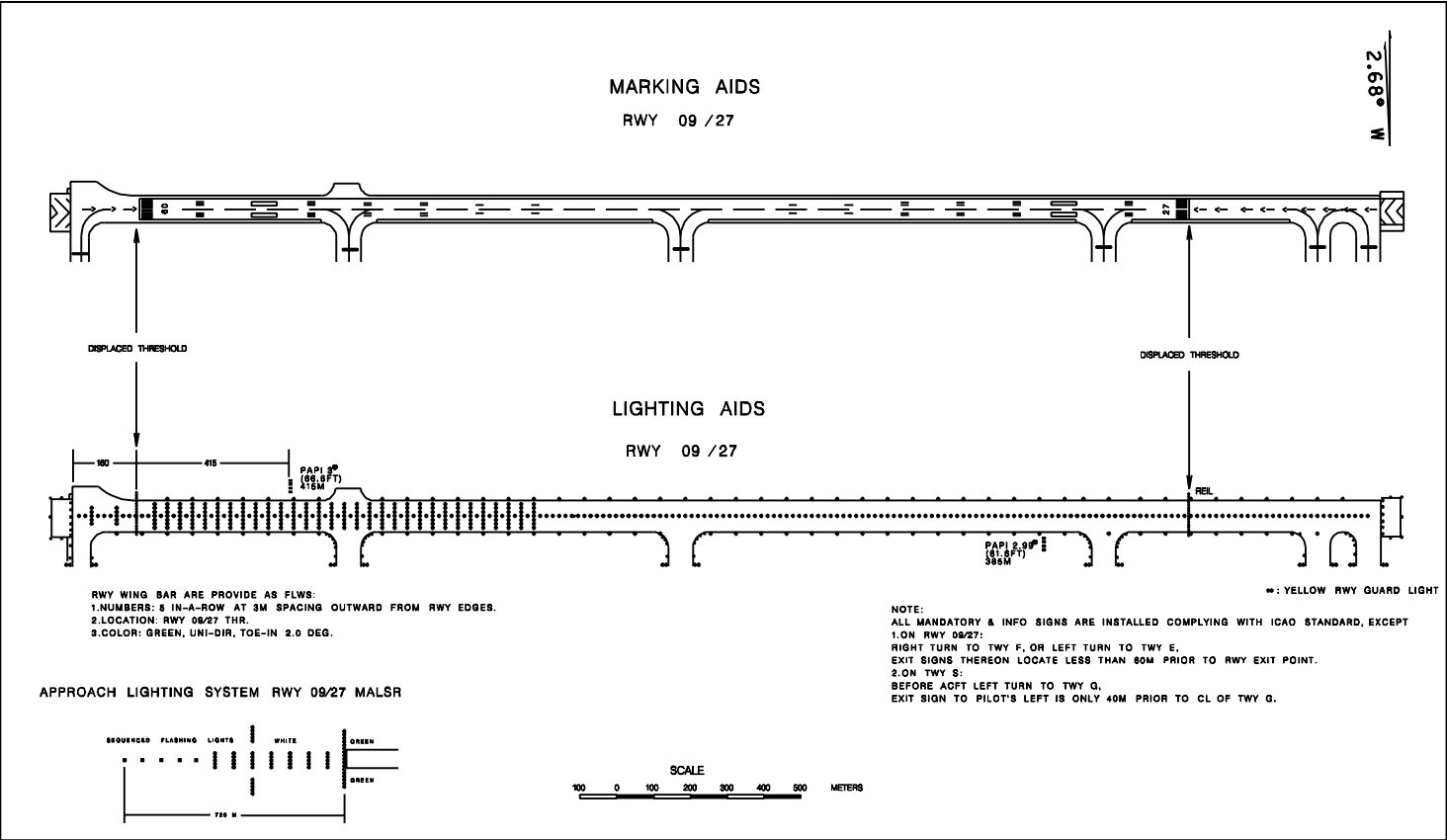
"SK", "IKAS" or "IKHG"

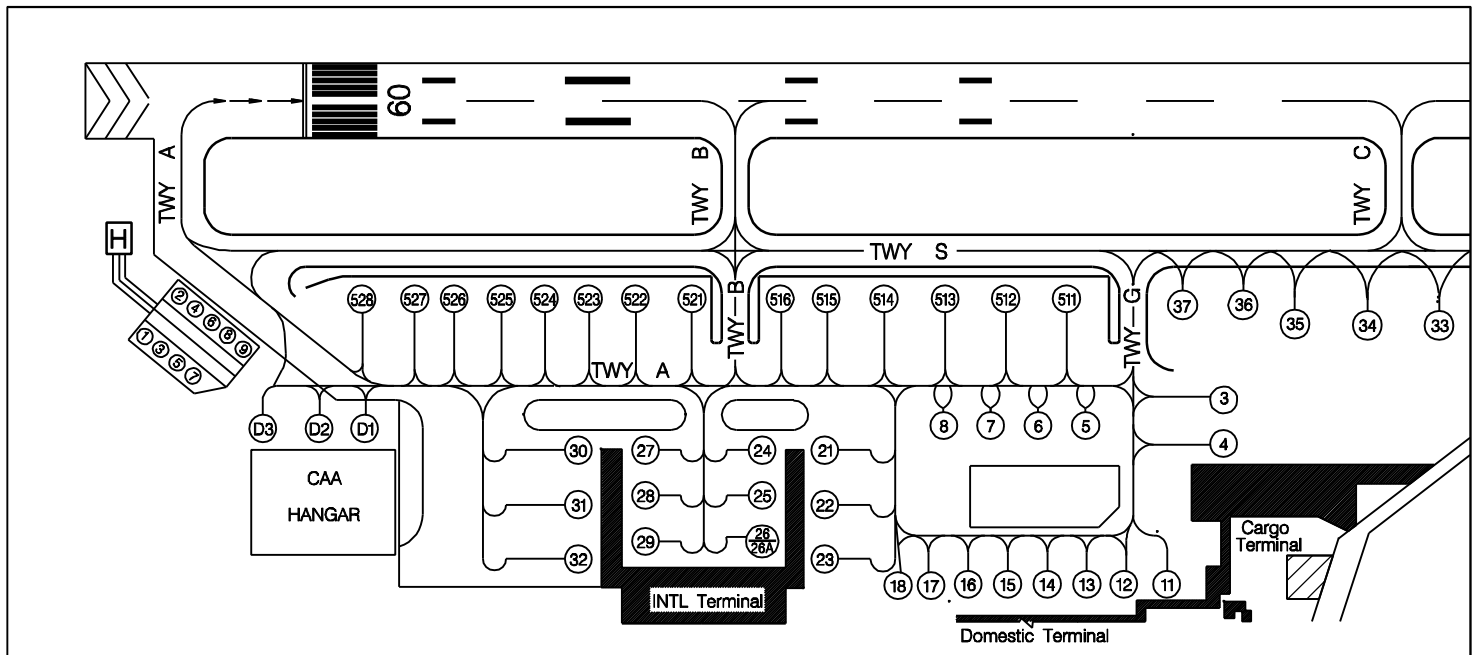




...RCKH 2-40 070315-kaohsiung-ad. 2007/11/8 下午 05:43:04







停機位編號 Bay NR	最大可停放機型	MAX Allowable Type
3, 5 ~ 8, 16 ~ 18		B753
4, 36 ~ 37		A321
11, 26A		F100
12 ~ 15, 515, 523 ~ 527		MD90
21, 24, 25, 27, 28, 30		A306
22 ~ 23, 31 ~ 35, 511, 516, 521		B744
26, 29, 528		B738
512 ~ 514, 522		B772
D1, D2 (MAINTENANCE ONLY)		B738
D3, (MAINTENANCE ONLY)		B767
512-514, 522		B772