

## Airport Information

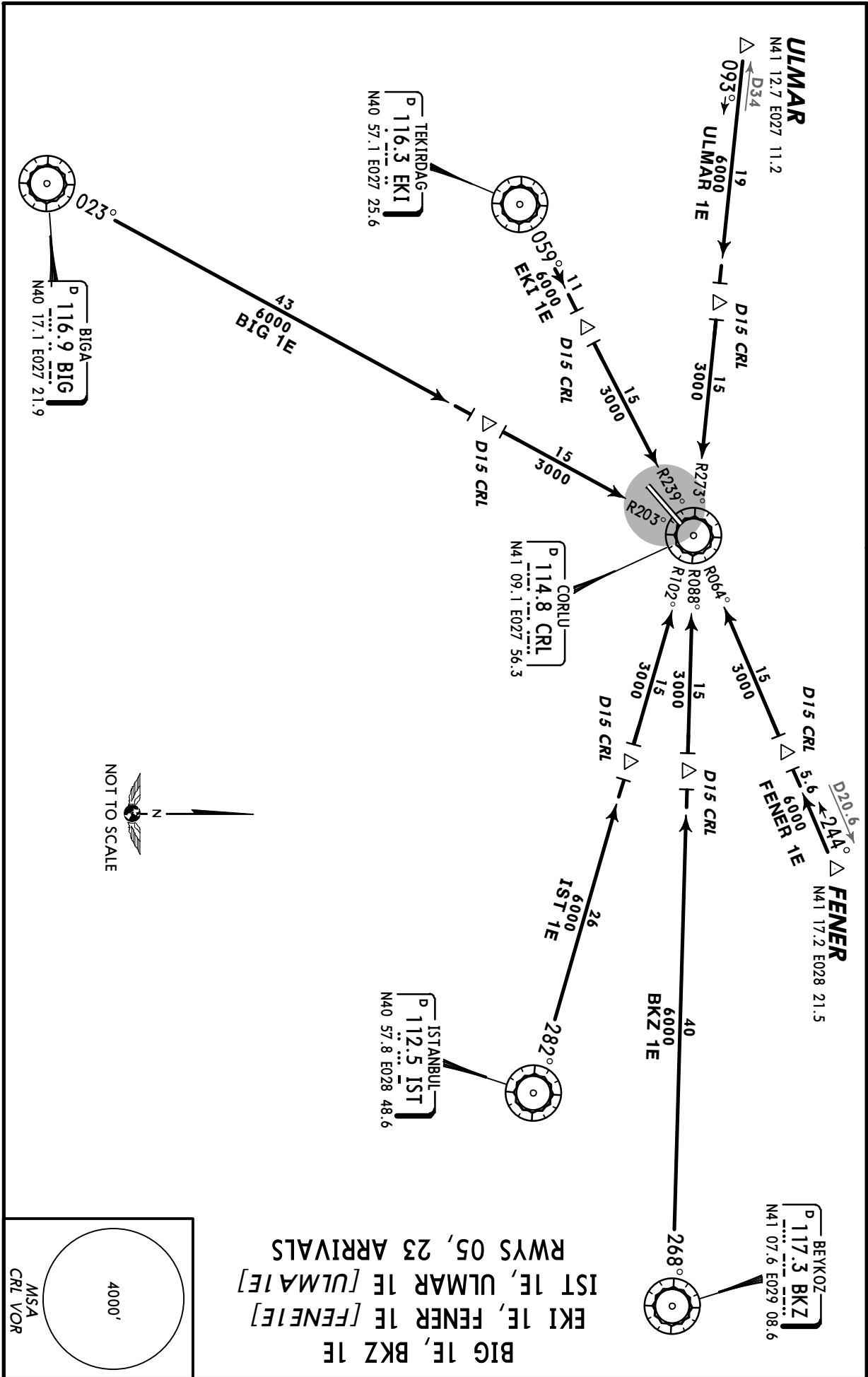
### Details for LTBU (TEQ) - CORLU



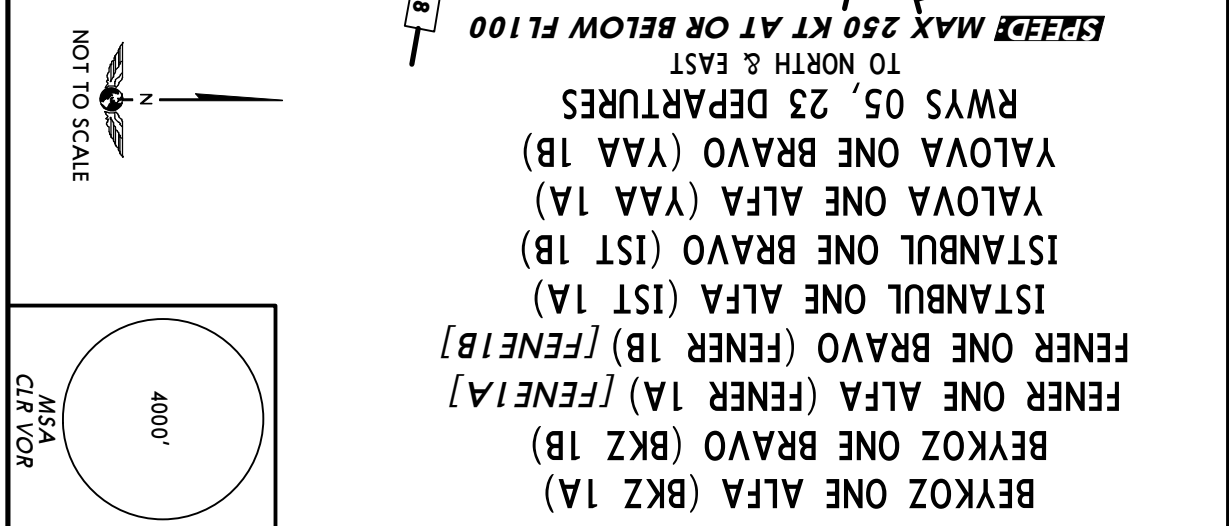
<b>City</b>	TEKIRDAG
<b>State/Province</b>	
<b>Country</b>	TUR
<b>Latitude</b>	N 41° 07' 56.00"
<b>Longitude</b>	E 27° 54' 58.00"
<b>Elevation</b>	574'
<b>Longest Runway</b>	9800'
<b>Magnetic Variance</b>	E 3.0°
<b>Fuel Type</b>	JET A-1 fuel is available
<b>Oxygen</b>	Oxygen facilities are unavailable.
<b>Repair Facility</b>	Repair facilities are unavailable
<b>Landing Fee</b>	Unknown.
<b>Jet Start Unit</b>	A starting unit is available at the airport.
<b>Airport Supports Precision Approach</b>	One or more charts for the airport support precision approaches.
<b>Airport Beacon Light</b>	A beacon light is available.
<b>Airport Customs Facilities</b>	Customs are available on a restricted basis.Check with airport.
<b>Airport Usage Type</b>	Airport/Heliport is jointly operated as public and military.
<b>Time Zone Conversion</b>	-2:00=UTC
<b>Daylight Savings</b>	Airport observes daylight savings time
<b>Notams Available</b>	None available

**Apt Elev**  
**574'**

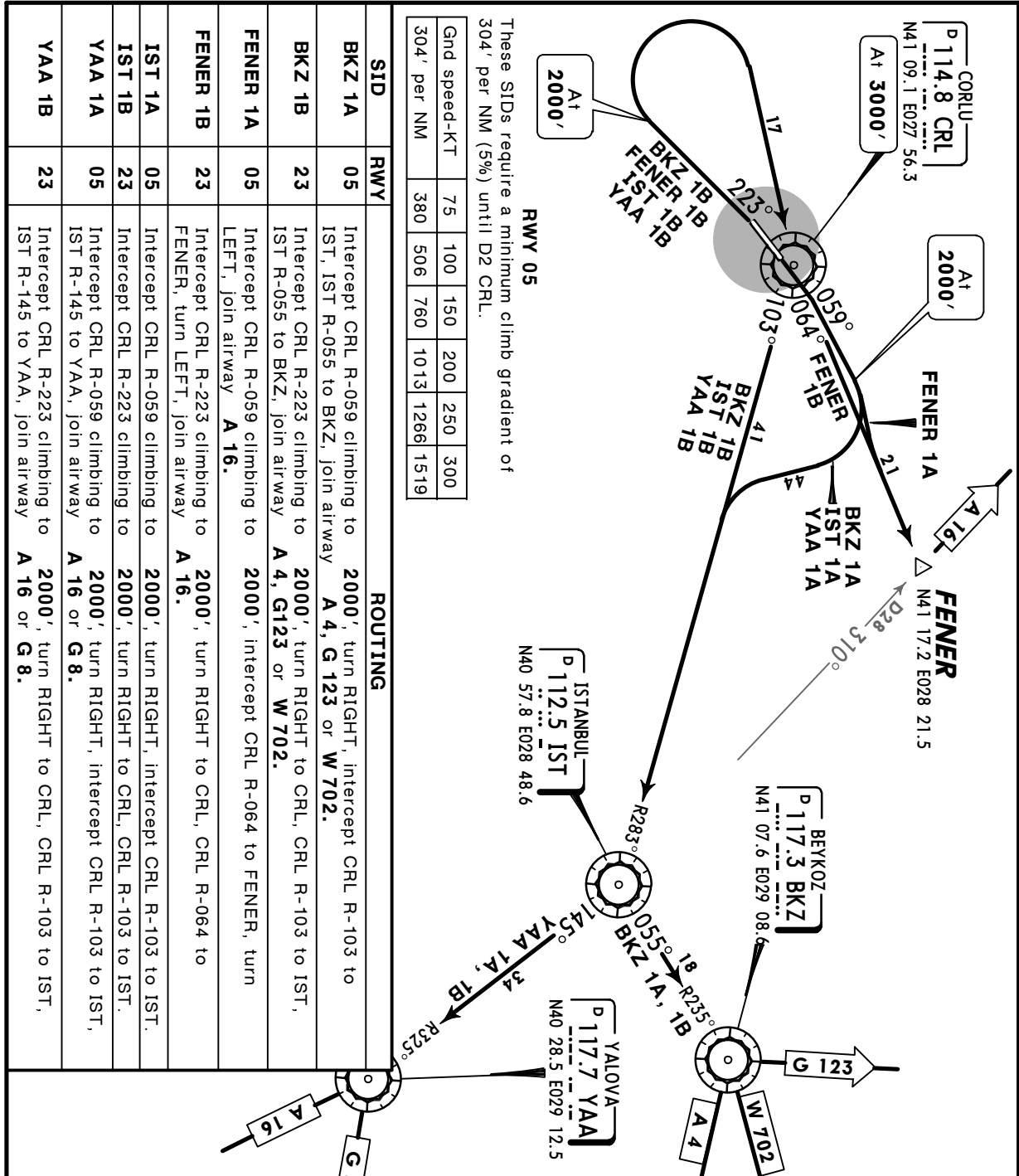
Alt Set: hPa    Trans level: By ATC    Trans alt: 10000'



Apt Elev 574'	Trans level: By ATC Trans alt: 10000'
------------------	--



BEYKOZ ONE ALFA (BKZ 1A)  
FENER ONE BRAVO (BKZ 1B)  
FENER ONE ALFA (FENER 1A) [FENE1A]  
FENER ONE BRAVO (FENER 1B) [FENE1B]  
ISTANBUL ONE ALFA (IST 1A)  
ISTANBUL ONE BRAVO (IST 1B)  
YALOVA ONE ALFA (YAA 1A)  
YALOVA ONE BRAVO (YAA 1B)  
RWYS 05, 23 DEPARTURES  
TO NORTH & EAST  
**SPEED MAX 250 KT AT OR BELOW FL100**



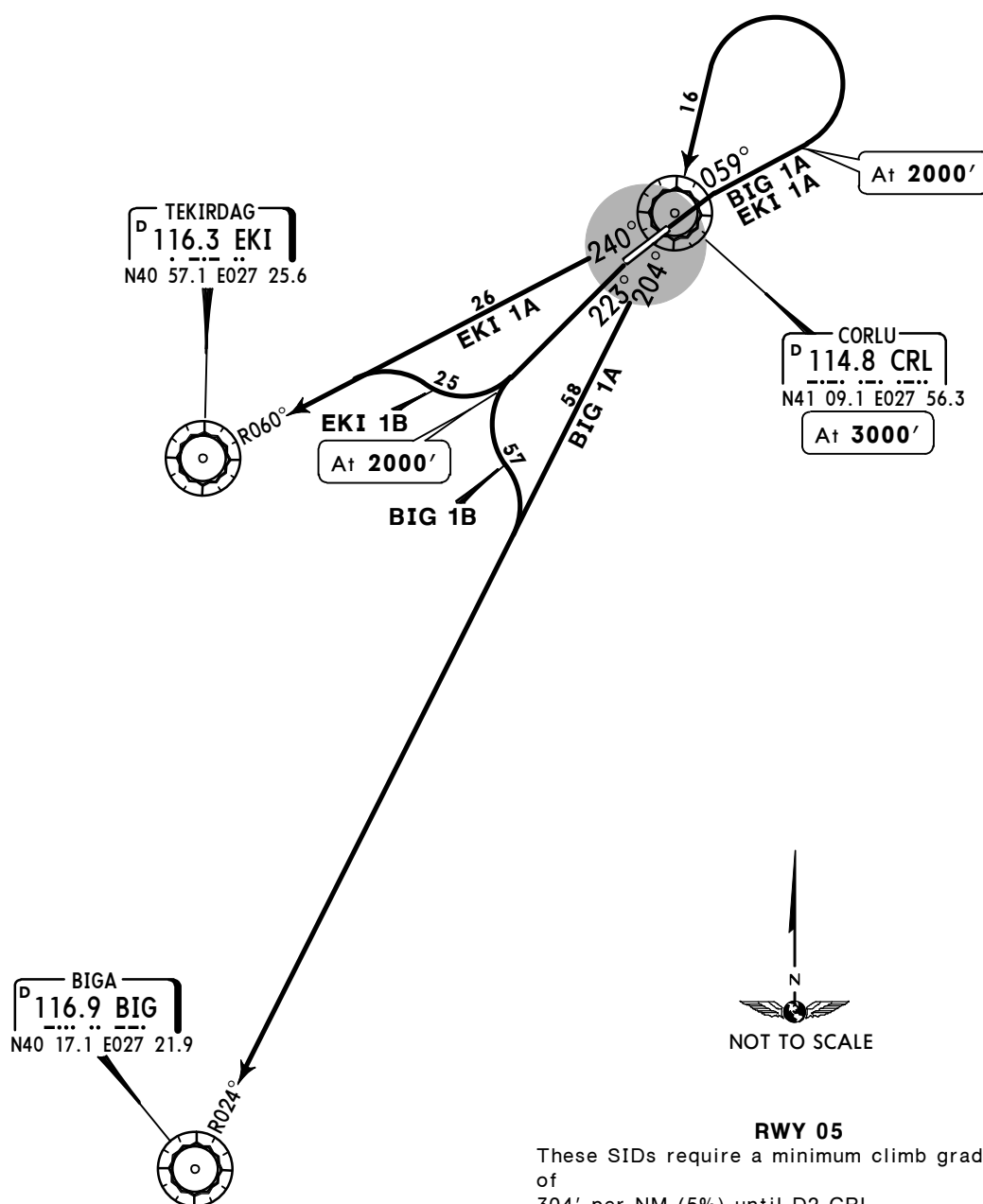
*Apt Elev*  
**574'**

Trans level: By ATC    Trans alt: 10000'

BIGA ONE ALFA (BIG 1A)  
BIGA ONE BRAVO (BIG 1B)  
TEKIRDAG ONE ALFA (EKI 1A)  
TEKIRDAG ONE BRAVO (EKI 1B)  
RWYS 05, 23 DEPARTURES  
TO SOUTHWEST  
***SPEED*** MAX 250 KT AT OR  
BELOW FL100

4000'

MSA  
CRL VOR



NOT TO SCALE

## RWY 05

These SIDs require a minimum climb gradient of 304' per NM (5%) until D2 CRL.

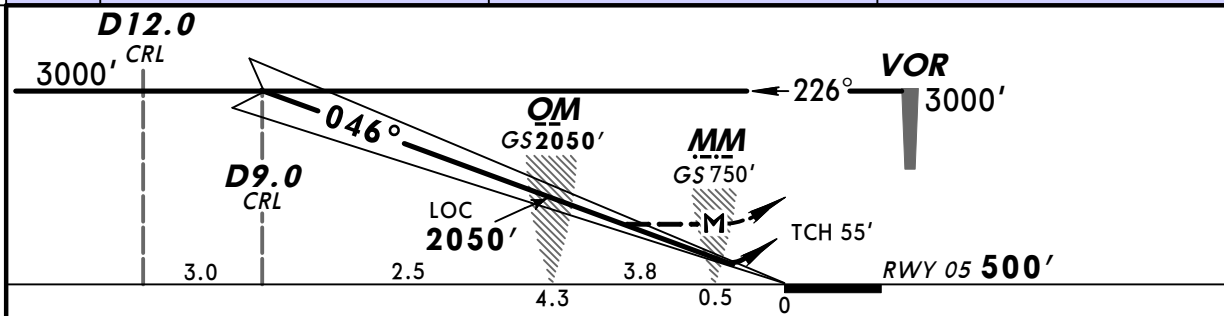
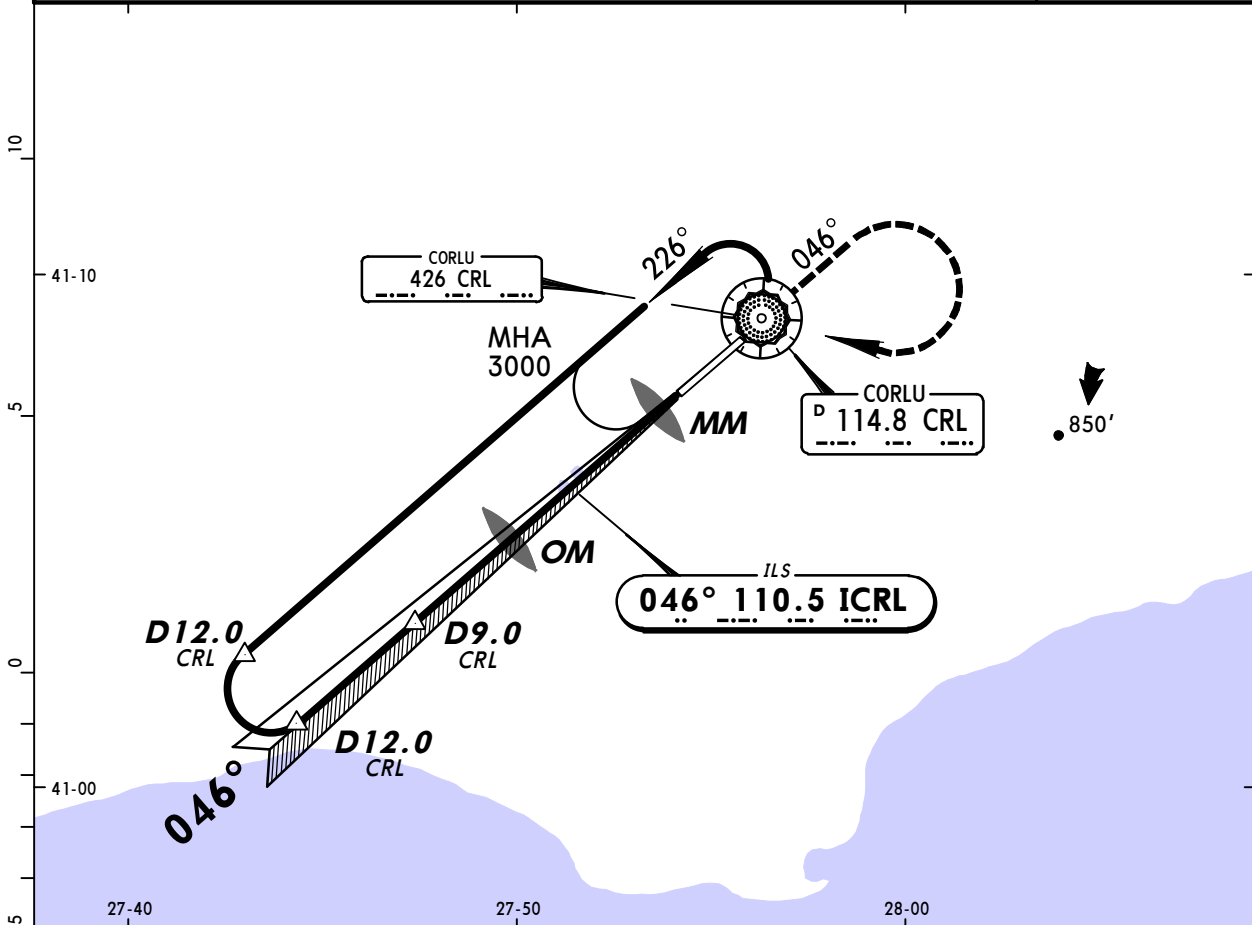
Gnd speed-KT	75	100	150	200	250	300
304' per NM	380	506	760	1013	1266	1519

SID	RWY	ROUTING
<b>BIG 1A</b>	<b>05</b>	Intercept CRL R-059 climbing to <b>2000'</b> , turn LEFT to CRL, CRL R-204 to BIG.
<b>BIG 1B</b>	<b>23</b>	Intercept CRL R-223 climbing to <b>2000'</b> , intercept CRL R-204 to BIG.
<b>EKI 1A</b>	<b>05</b>	Intercept CRL R-059 climbing to <b>2000'</b> , turn LEFT to CRL, CRL R-240 to EK1.
<b>EKI 1B</b>	<b>23</b>	Intercept CRL R-223 climbing to <b>2000'</b> , intercept CRL R-240 to EK1.

**CHANGES:** None.

© JEPPESEN SANDERSON, INC., 2003, 2004. ALL RIGHTS RESERVED.

YESILKOY Approach/Radar		CORLU Tower		Ground
North 120.5 122.1	South 121.1 122.1	120.37	122.1	121.9
LOC ICRL <b>110.5</b>	Final Apch Crs <b>046°</b>	GS OM <b>2050' (1550')</b>	ILS DA(H) <b>700' (200')</b>	Apt Elev 574' RWY <b>500'</b>
<b>MISSED APCH:</b> Climb via VOR on R-046 to 2000', then turn RIGHT climbing to 3000' to VOR and hold.				<div style="border: 1px solid black; border-radius: 50%; width: 100px; height: 100px; display: flex; align-items: center; justify-content: center;">4000'</div>
Alt Set: hPa		Rwy Elev: 18 hPa	Trans level: By ATC	Trans alt: 10000'
Racetrack restricted to MAX IAS 185 KT.				MSA CRL VOR



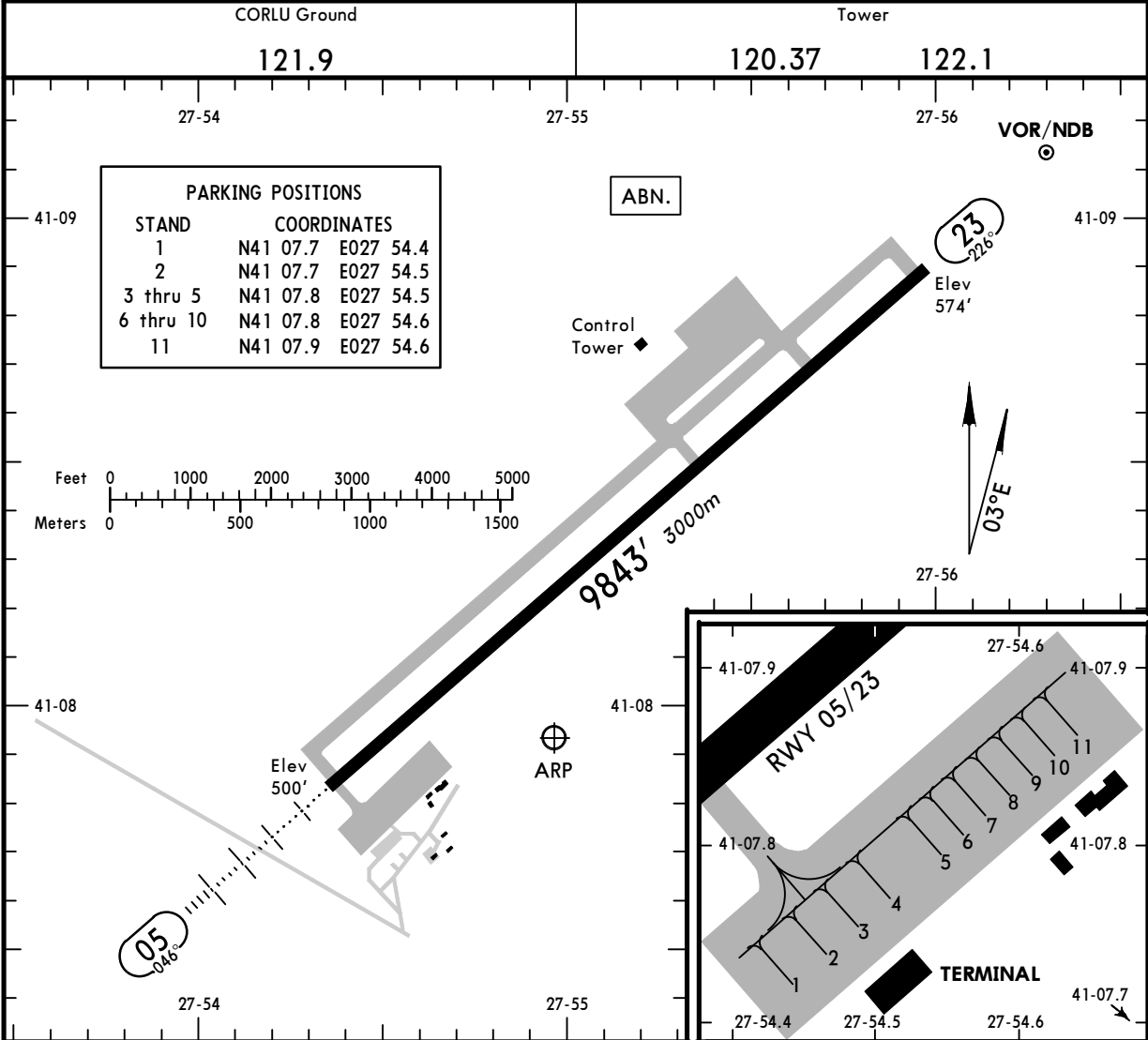
Gnd speed-Kts	70	90	100	120	140	160	HIALS	CRL	2000'	CRL
ILS GS 3.00° or							VASI	114.8	↑	114.8
LOC Desc Grad 5.2%	377	485	539	647	755	862	VASI		↑	
MAP at MM										

JAR-OPS				STRAIGHT-IN LANDING RWY 05				CIRCLE-TO-LAND			
ILS		LOC (GS out)		DA(H) 700' (200')		MDA(H) 850' (350')		Max Kts		MDA(H)	
FULL	ALS out	FULL	ALS out	FULL	ALS out	FULL	ALS out	100	135	1100' (526')	1500m
A				RVR 900m							
B	RVR 550m	RVR 1000m		RVR 1000m							
C				RVR 1800m							
D				RVR 1400m							

LTBU/TEQ  
Apt Elev 574'  
N41 07.9 E027 55.0

JEPPesen  
15 JUL 05 (11-1)

TEKIRDAG, TURKEY  
CORLU AB



ADDITIONAL RUNWAY INFORMATION			USABLE LENGTHS		WIDTH
RWY			LANDING BEYOND	TAKE-OFF	
		Threshold	Glide Slope		
05	RL HIALS VASI (angle 2.6°)	RVR			148'
23	RL	RVR			45m
JAR-OPS					
TAKE-OFF					
All Rwys					
RCLM (DAY only) or RL			NIL (DAY only)		
A	400m		500m		
B					
C					
D					

CHANGES: Minimums.

© JEPPESEN SANDERSON, INC., 1999, 2005. ALL RIGHTS RESERVED.

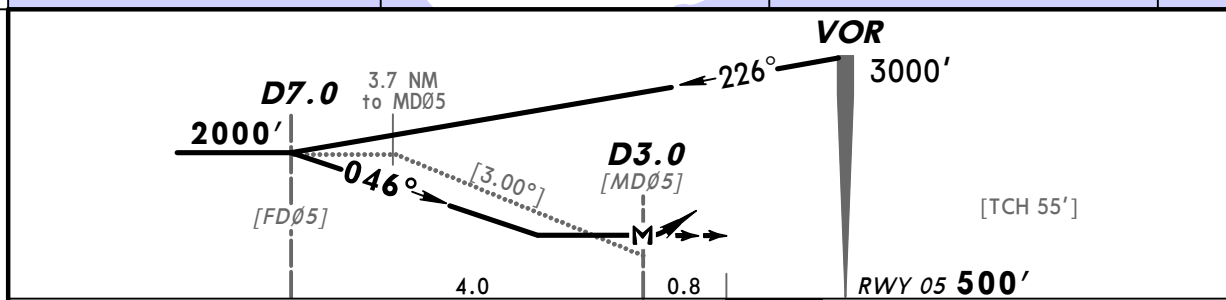
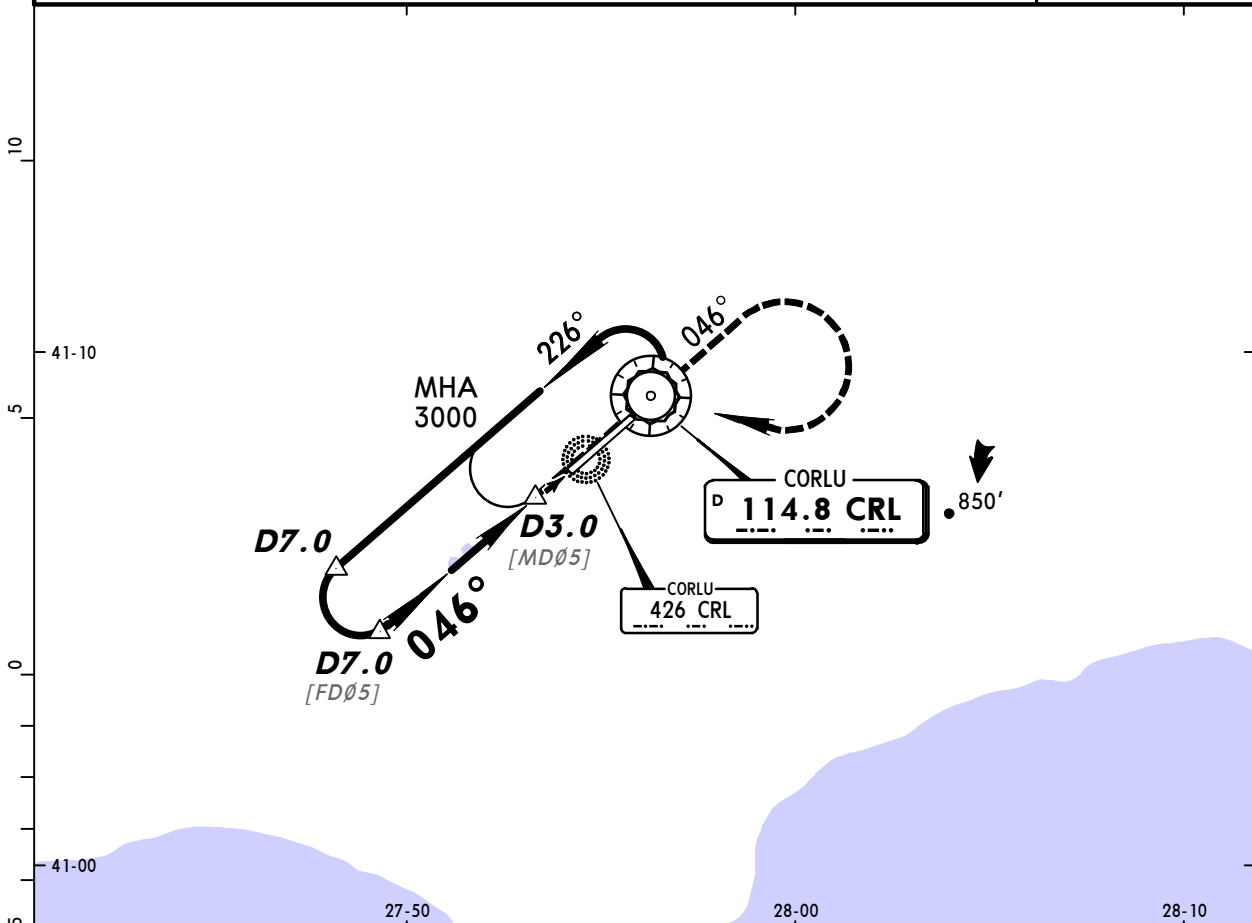
LTBU/TEQ  
CORLU AB

JEPPESEN  
11 MAR 05 (13-1) Eff 17 Mar

TEKIRDAG, TURKEY  
VOR DMÉ Rwy 05

BRIEFING STRIP

YESILKOY Approach/Radar		CORLU Tower		Ground	
North	South				
120.5	121.1	120.37	122.1		121.9
VOR CRL 114.8	Final Apch Crs 046°	Minimum Alt D7.0 2000' (1500')	MDA(H) 900' (400')	Apt Elev 574' RWY 500'	<div>4000'</div> <div>MSA CRL VOR</div>
MISSED APCH: Climb on R-046 to 2000', then turn RIGHT climbing to 3000' to VOR and hold.					
Alt Set: hPa      Rwy Elev: 18 hPa      Trans level: By ATC      Trans alt: 10000'					
Racetrack restricted to MAX IAS 185 KT.					



Gnd speed-Kts	70	90	100	120	140	160	<div><div>HIALS</div><div>VASI</div><div>VASI</div></div>	2000' CRL on 114.8 R-046
Descent angle [3.00°]	372	478	531	637	743	849		
MAP at D3.0								

JAR-OPS			STRAIGHT-IN LANDING RWY 05			CIRCLE-TO-LAND		
			MDA(H) 900' (400')					
			ALS out					
A	RVR 900m		RVR 1500m			Max Kts	MDA(H)	VIS
B	RVR 1000m					100	1100' (526')	1500m
C	RVR 1000m					135	1100' (526')	1600m
D	RVR 1400m					180	1300' (726')	2400m
						205	1300' (726')	3600m

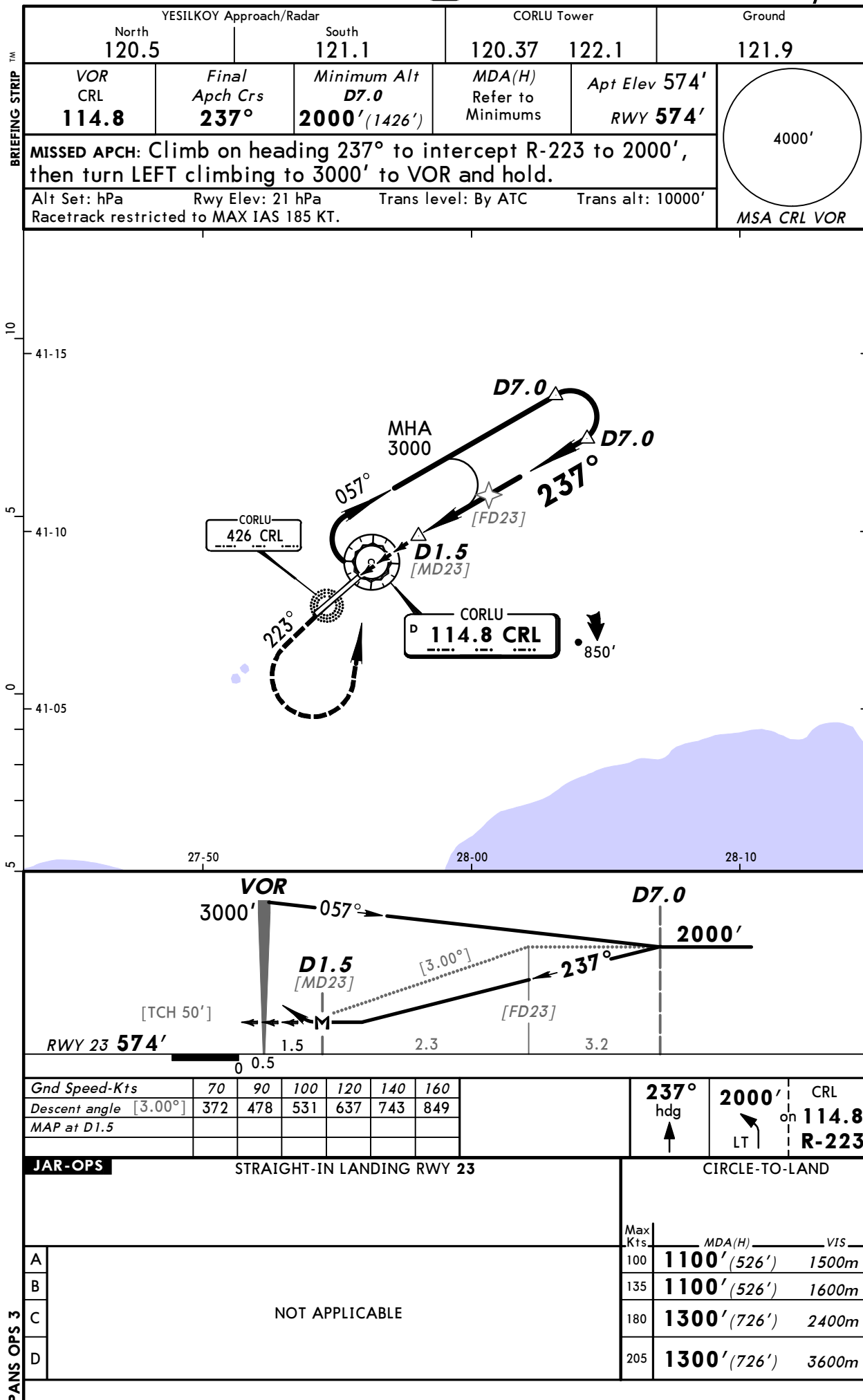
CHANGES: NDB procedure removed. Descent angle.

© JEPPESEN SANDERSON, INC., 1999, 2005. ALL RIGHTS RESERVED.

LTBU/TEQ  
CORLU AB

JEPPESEN  
11 MAR 05 (13-2) Eff 17 Mar

TEKIRDAG, TURKEY  
VOR DMÉ Rwy 23



CHANGES: NDB procedure removed.

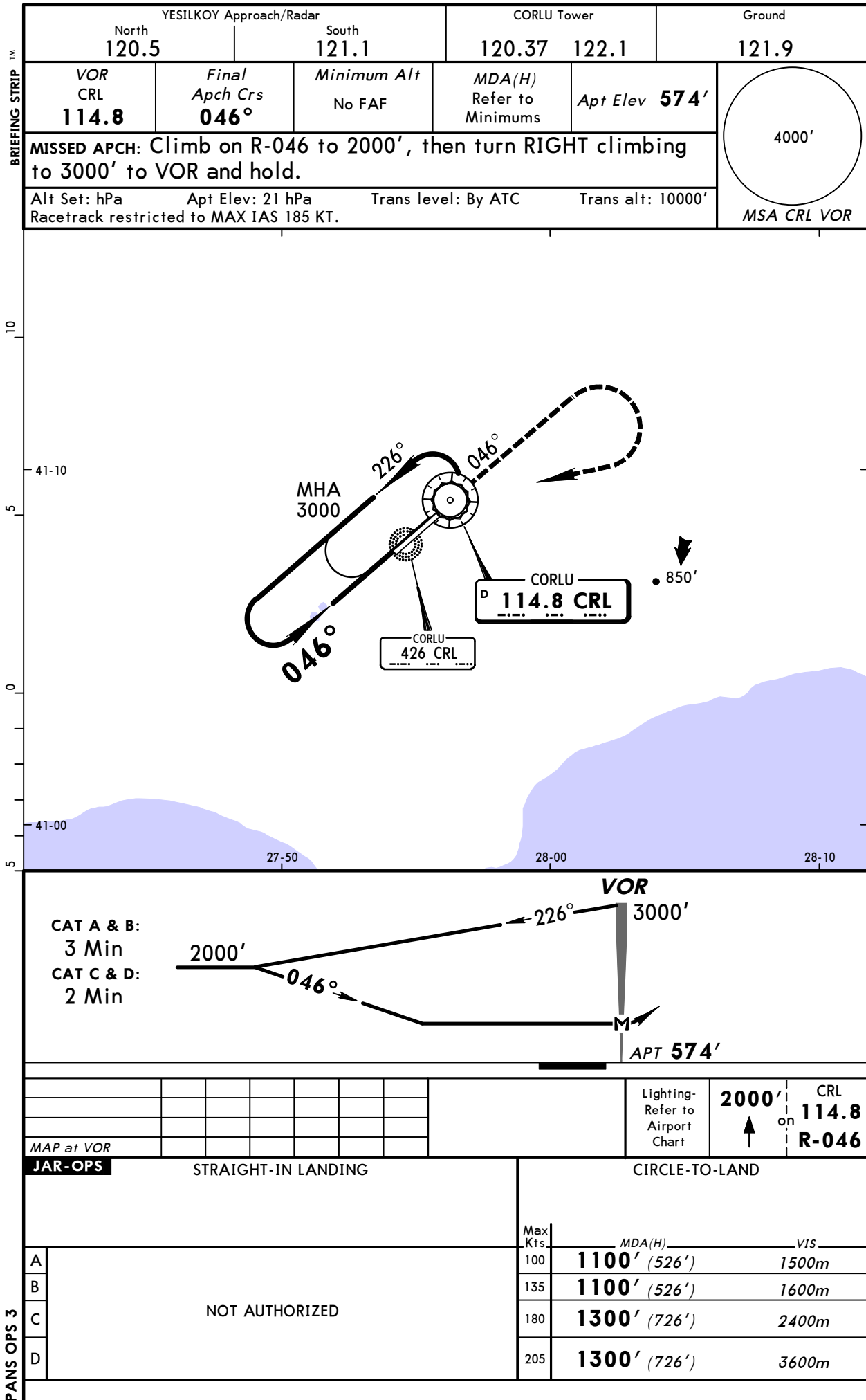
© JEPPESEN SANDERSON, INC., 1999, 2005. ALL RIGHTS RESERVED.



LTBU/TEQ  
CORLU AB

JEPPESEN  
11 MAR 05 (13-3) Eff 17 Mar

TEKIRDAG, TURKEY  
VOR-1



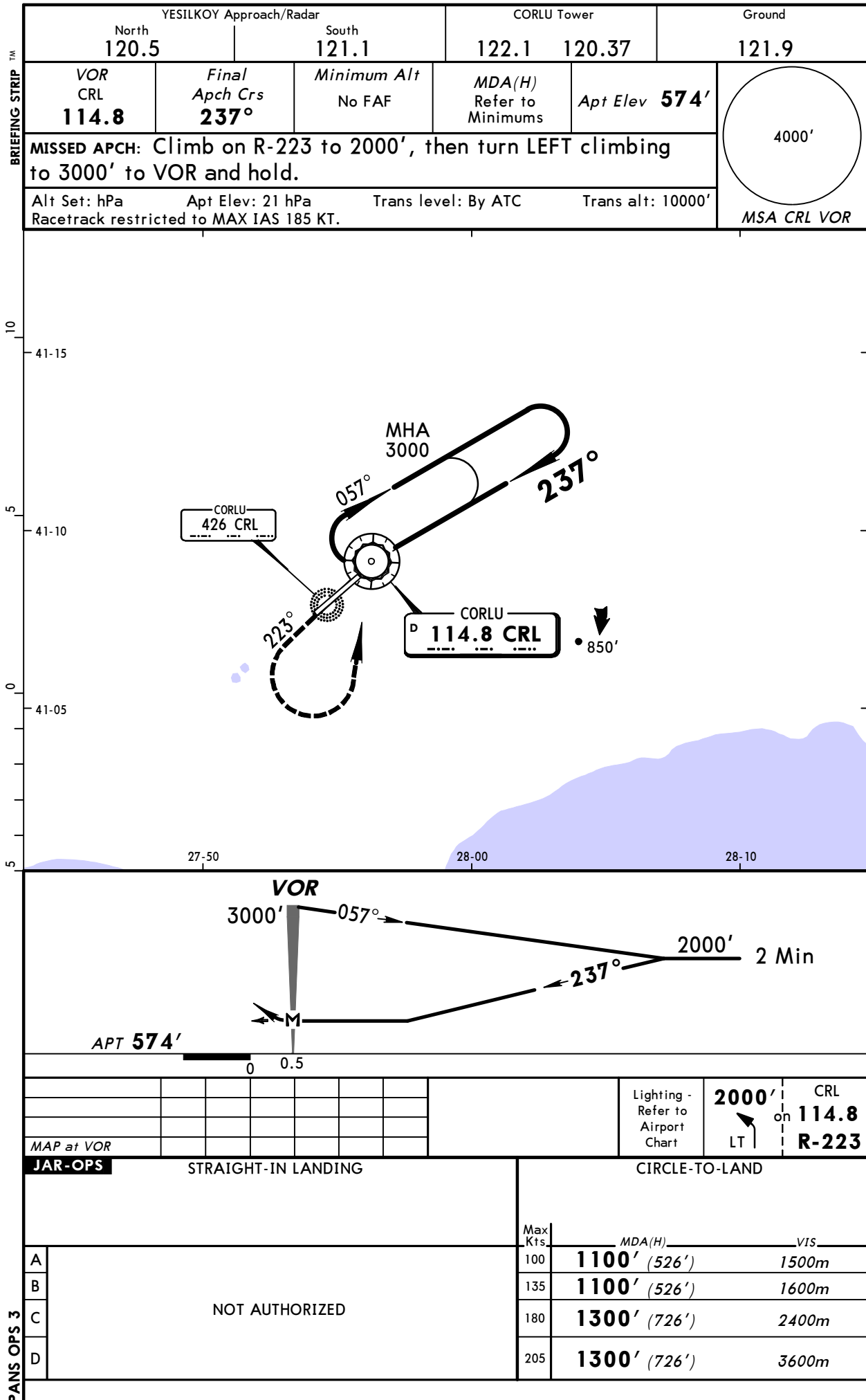
CHANGES: NDB procedure removed.

© JEPPESEN SANDERSON, INC., 1999, 2005. ALL RIGHTS RESERVED.

LTBU/TEQ  
CORLU AB

JEPPESEN  
11 MAR 05 (13-4) Eff 17 Mar

TEKIRDAG, TURKEY  
VOR-2



CHANGES: NDB procedure removed.

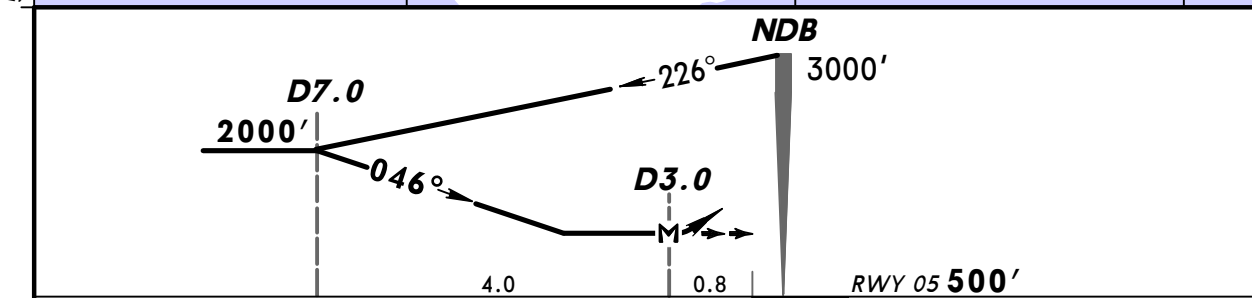
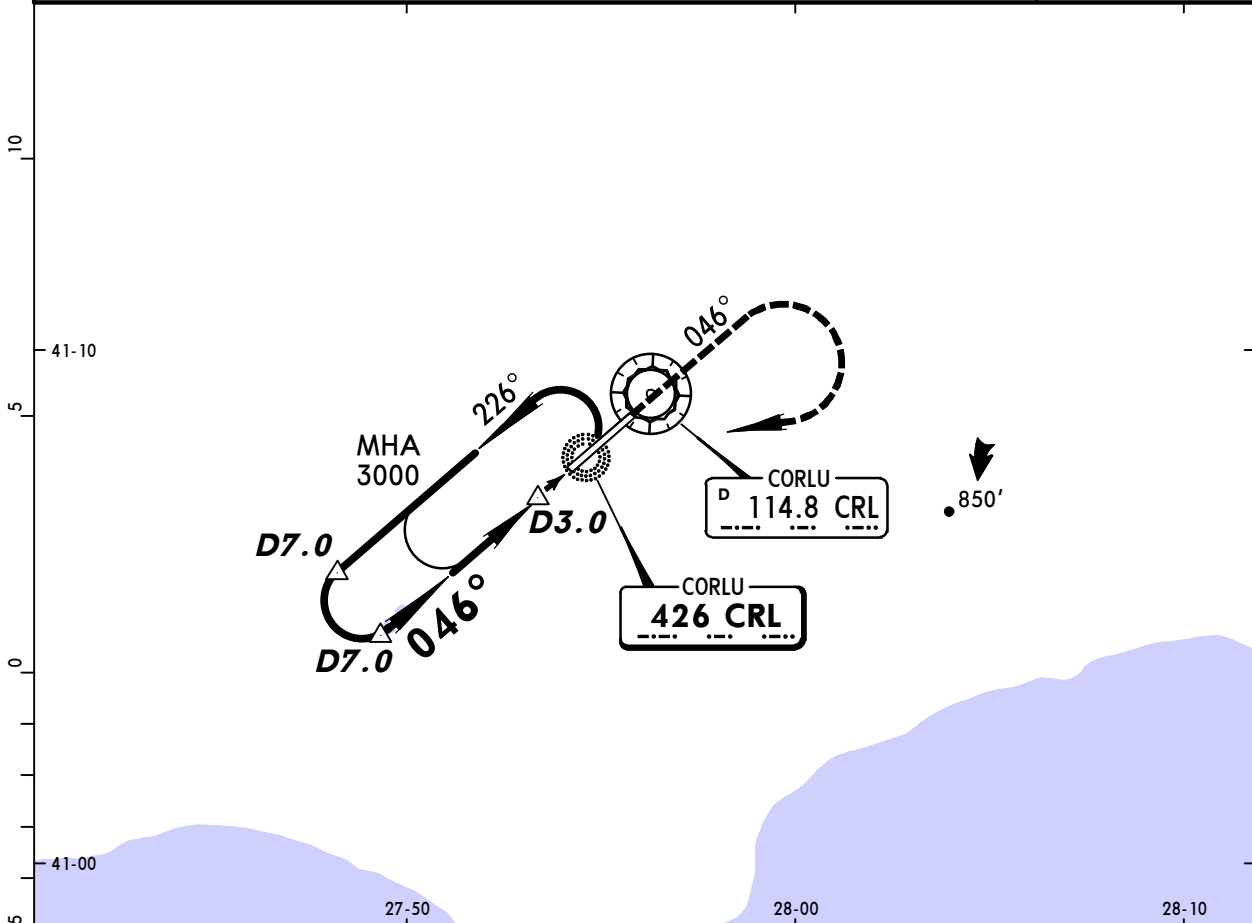
© JEPPESEN SANDERSON, INC., 1999, 2005. ALL RIGHTS RESERVED.

LTBU/TEQ  
CORLU AB

JEPPESEN  
11 MAR 05 (16-1) Eff 17 Mar

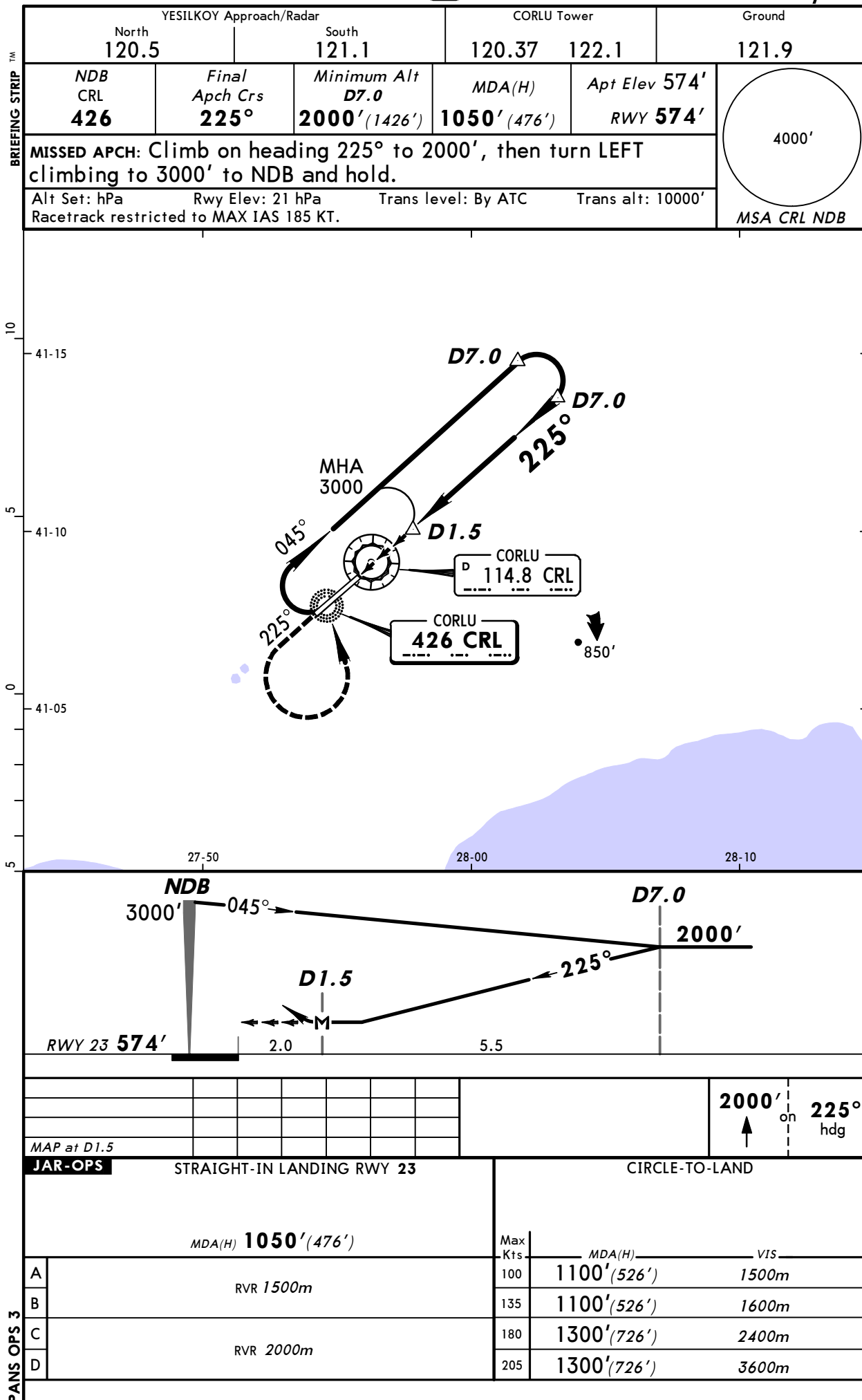
TEKIRDAG, TURKEY  
NDB DMÉ Rwy 05

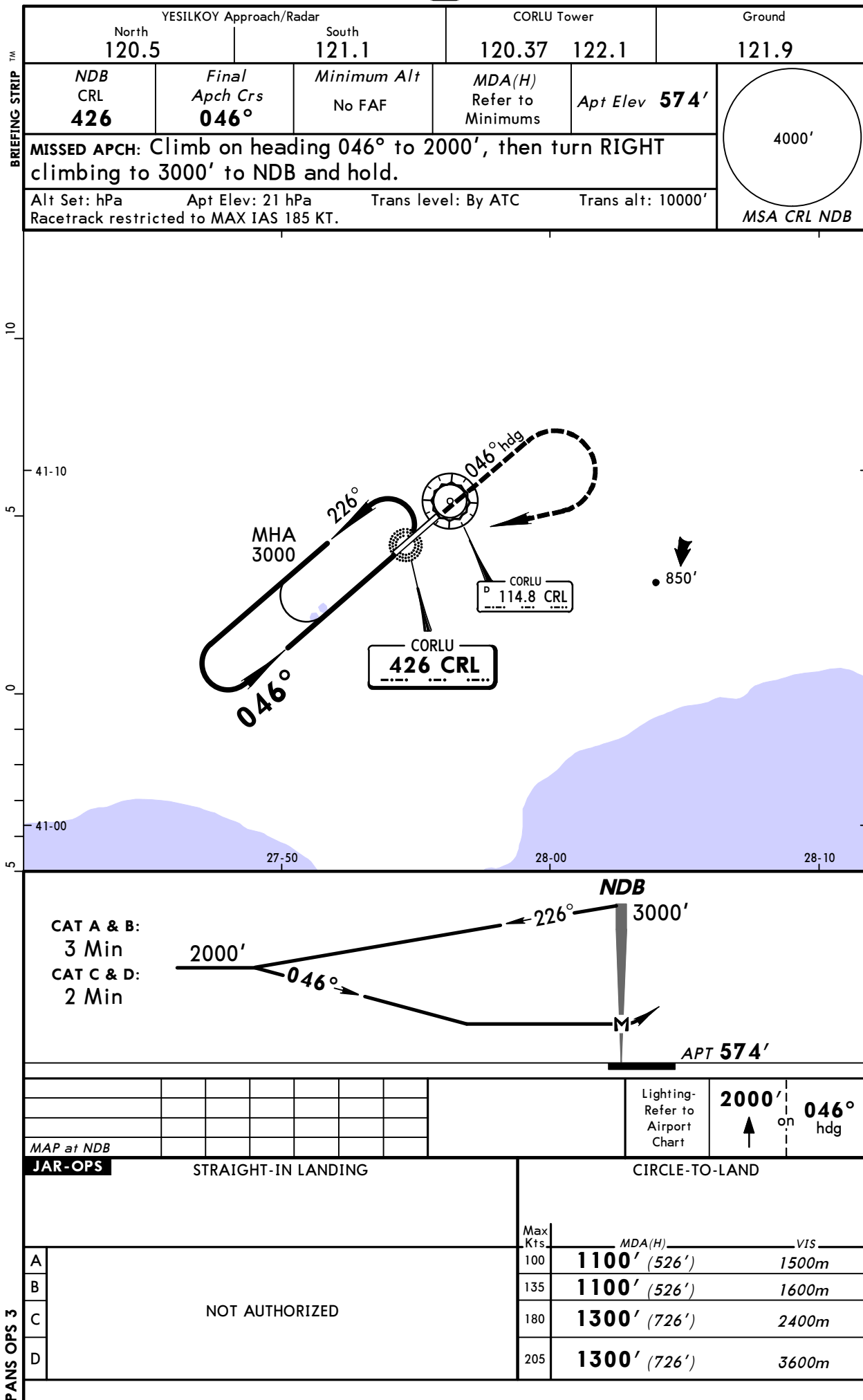
YESILKOY Approach/Radar		CORLU Tower		Ground
North 120.5	South 121.1	120.37	122.1	121.9
NDB CRL <b>426</b>	Final Apch Crs <b>046°</b>	Minimum Alt <b>D7.0</b> 2000' (1500')	MDA(H) <b>900' (400')</b>	Apt Elev 574' RWY <b>500'</b>
<b>MISSED APCH:</b> Climb on heading 046° to 2000', then turn RIGHT climbing to 3000' to NDB and hold.				
Alt Set: hPa		Rwy Elev: 18 hPa	Trans level: By ATC	Trans alt: 10000'
Racetrack restricted to MAX IAS 185 KT.				MSA CRL NDB



MAP at D3.0					HIALS VASI VASI	2000' on 046° ↑ hdg
-------------	--	--	--	--	--------------------	------------------------

JAR-OPS STRAIGHT-IN LANDING RWY 05			CIRCLE-TO-LAND	
MDA(H) <b>900' (400')</b>			Max Kts	MDA(H) VIS
A	RVR 900m	ALS out	100	1100' (526') 1500m
B	RVR 1000m	RVR 1500m	135	1100' (526') 1600m
C	RVR 1000m	RVR 1800m	180	1300' (726') 2400m
D	RVR 1400m	RVR 2000m	205	1300' (726') 3600m





TEKIRDAG, TURKEY  
NDB-2

© JEPPESEN SANDERSON, INC., 2005. ALL RIGHTS RESERVED.