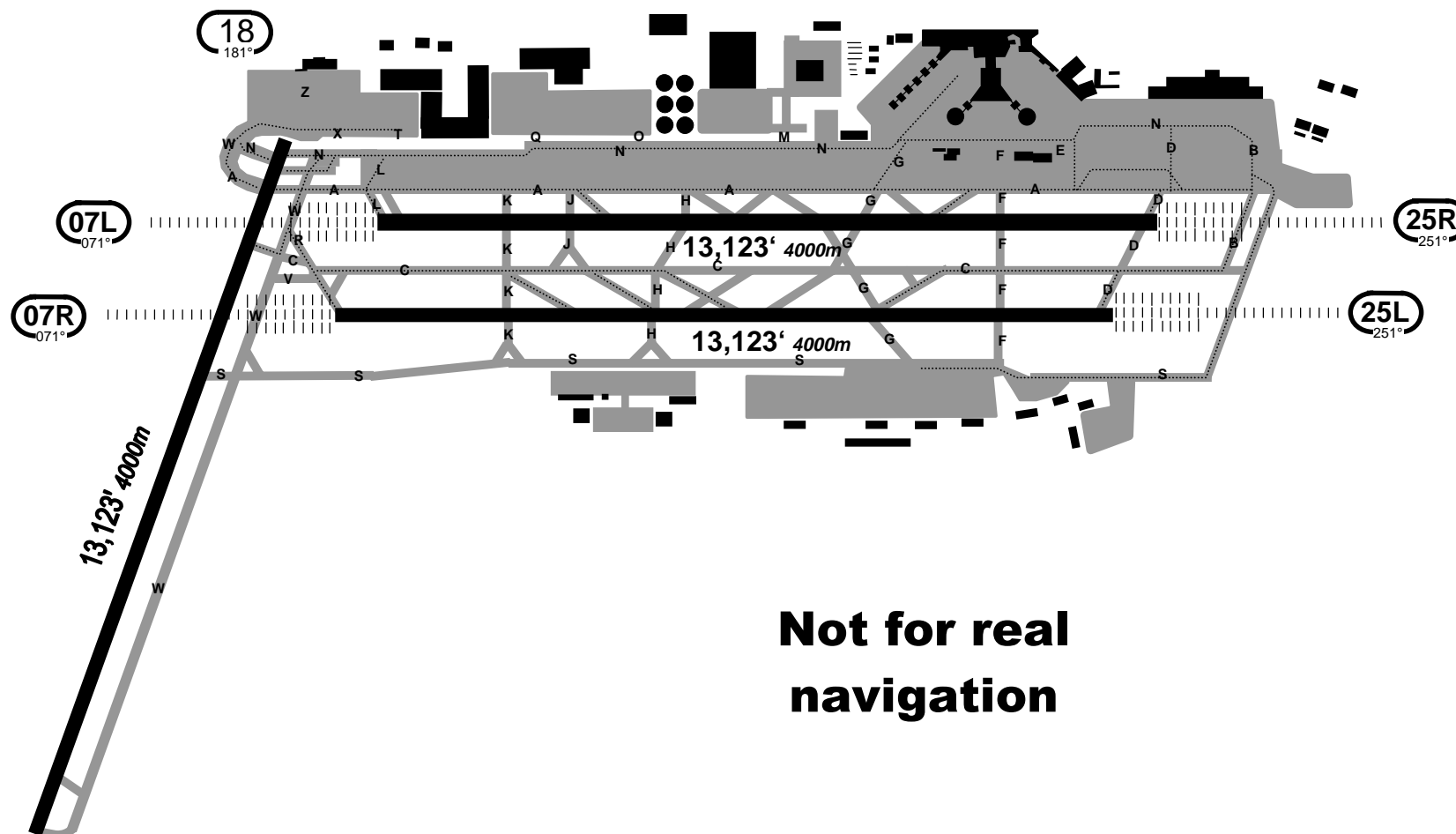


ATIS 118.02 114.2  
FRANKFURT Ground (Cpt) 121.9  
Apron 121.7 (Civ) 122.05 (Civ) Ramp 121.6  
(Mil)  
Tower 119.9 124.85

FRANKFURT  
Departure  
120.15

**FRANKFURT/MAIN, GERMANY**  
EDDF  
245.4°/2.9 From FFM 114.2 N50 02.1 E008 34.3

Var 01°W Elev 364'



**Not for real  
navigation**

# Airport

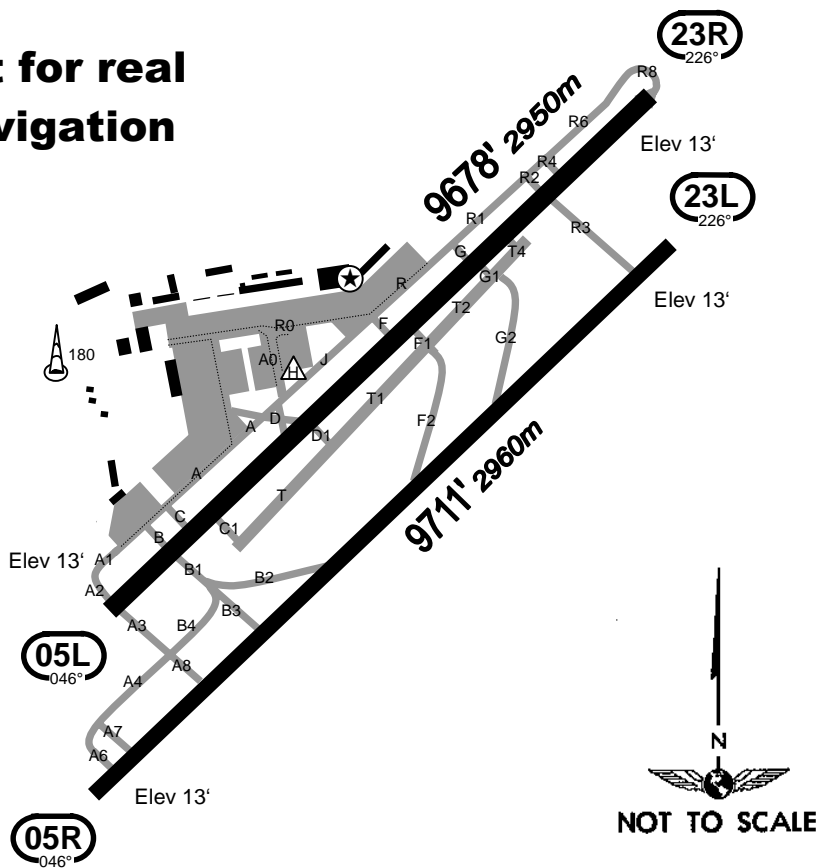
ATIS 129.6  
NICE Flight Data (Cpt) 121.7  
NICE Ground 123.15  
Tower 118.7

LFMN

196.3°/6.5from NIZ 112.4

NICE, FRANCE  
COTE D'AZUR  
N43 39.9 E007 12.9  
VAR 01°W Elev 13'

**Not for real  
navigation**



## ADDITIONAL RUNWAY INFORMATION

RWY	USABLE LENGTHS					
	LANDING BEYOND		Take off	WIDTH		
	Threshold	Glide Slope				
05L	HIRL PAPI-L (3.0°)	VIBAL		197'		
23R	RL	VIBAL		60m		
05R	HIRL REIL PAPI-L (3.0°)	VIBAL		148'		
23L	HIRL REIL PAPI-L (3.2°)	VIBAL		45m		

❶ Not authorized 22.00 – 07.30 LT.

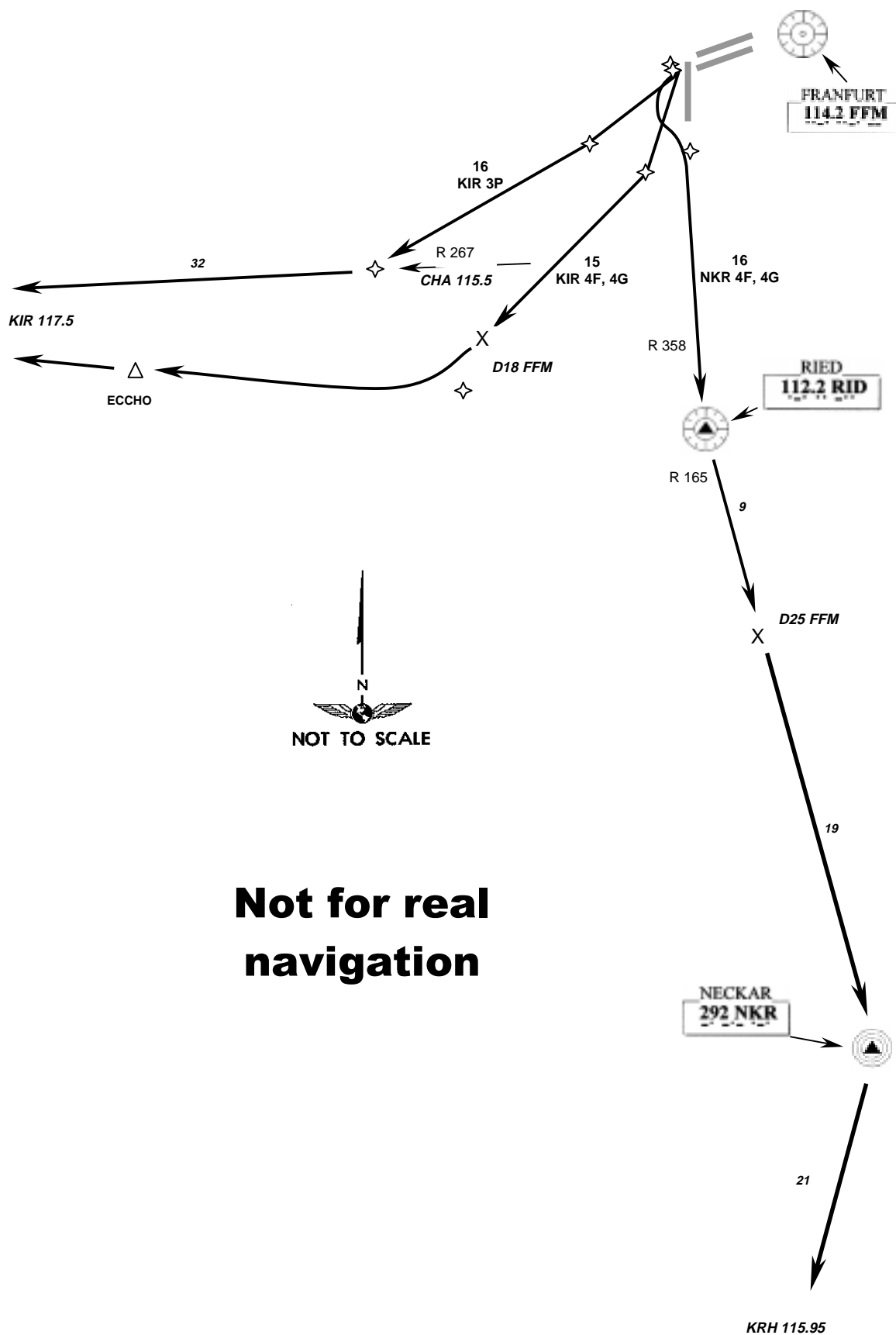
❷ Additional 164' (50m) available for take-off rwy 23R if using twy R8. Total take off length rwy 23R 9843' (3000m)

15	HIRL CL HIALS SFL REIL VASI HAST-C/G	RVR	10869' 3313m	ω	151'
33	HIRL CL HIALS SFL VASI (3 bar)HAST-E		10565' 3220m	ξ	46m

## TAKE-OFF

	AIR CARRIER			AIR CARRIER (FAR 121)	
	Rwys 05R/23L, 05L	Rwys 23R	NIGHT ALL Rwys	All Rwys Adequate Vis Ref	
A	RVR 250m	400m	400m	2	RVR 500m VIS 400m
B	RVR 300m(250m)			Eng	
C	RVR 250m(250m)			3&4	
D	RVR 400m(300m)			Eng	

ATIS	118.02	114.2
FRANKFURT Departure	120.42	

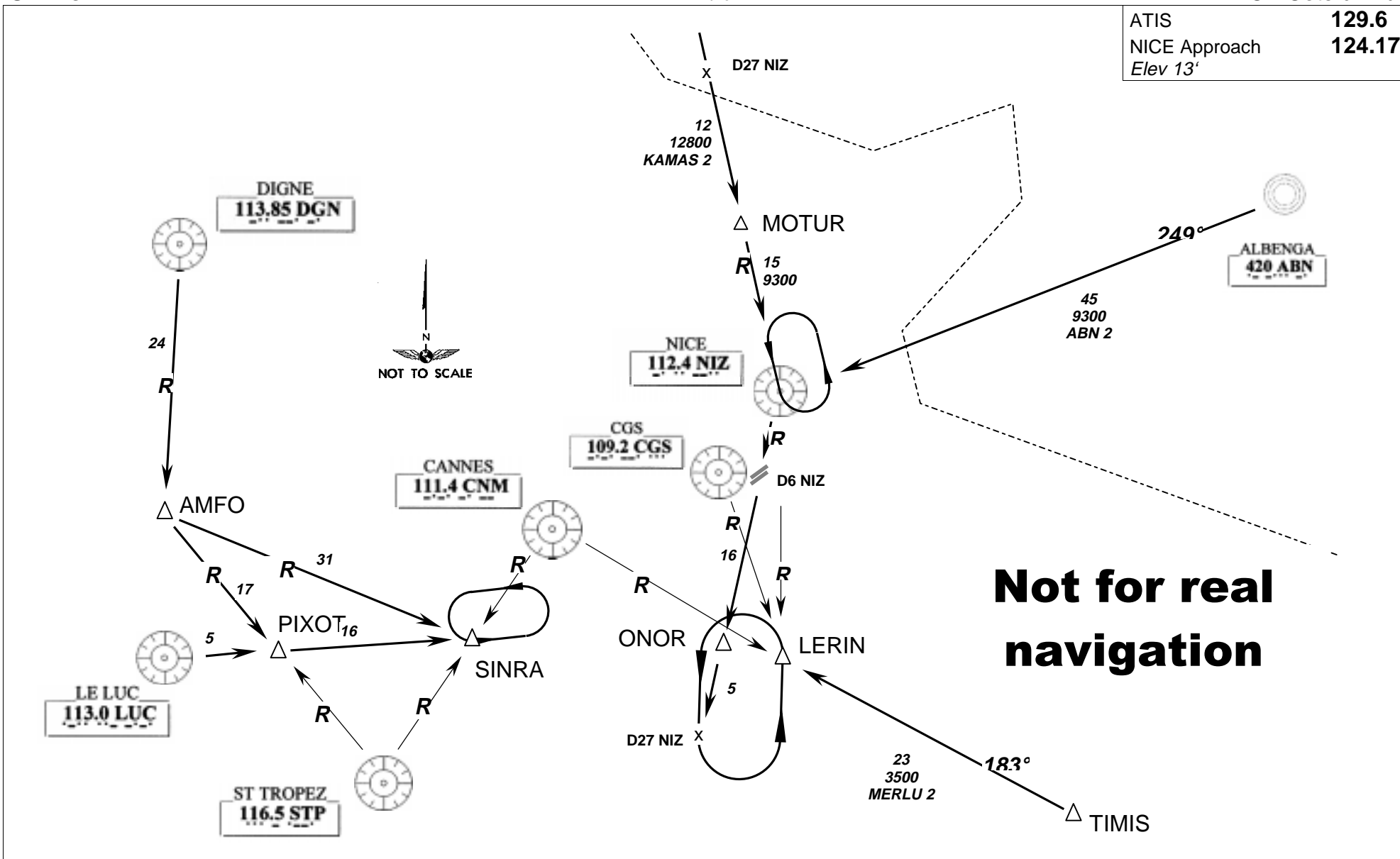


STARs

LFMN/NCE

NICE Cote d'Azur

ATIS	129.6
NICE Approach	124.17
Elev 13'	



## NICE Cote d'Azur

via NIZ VOR

