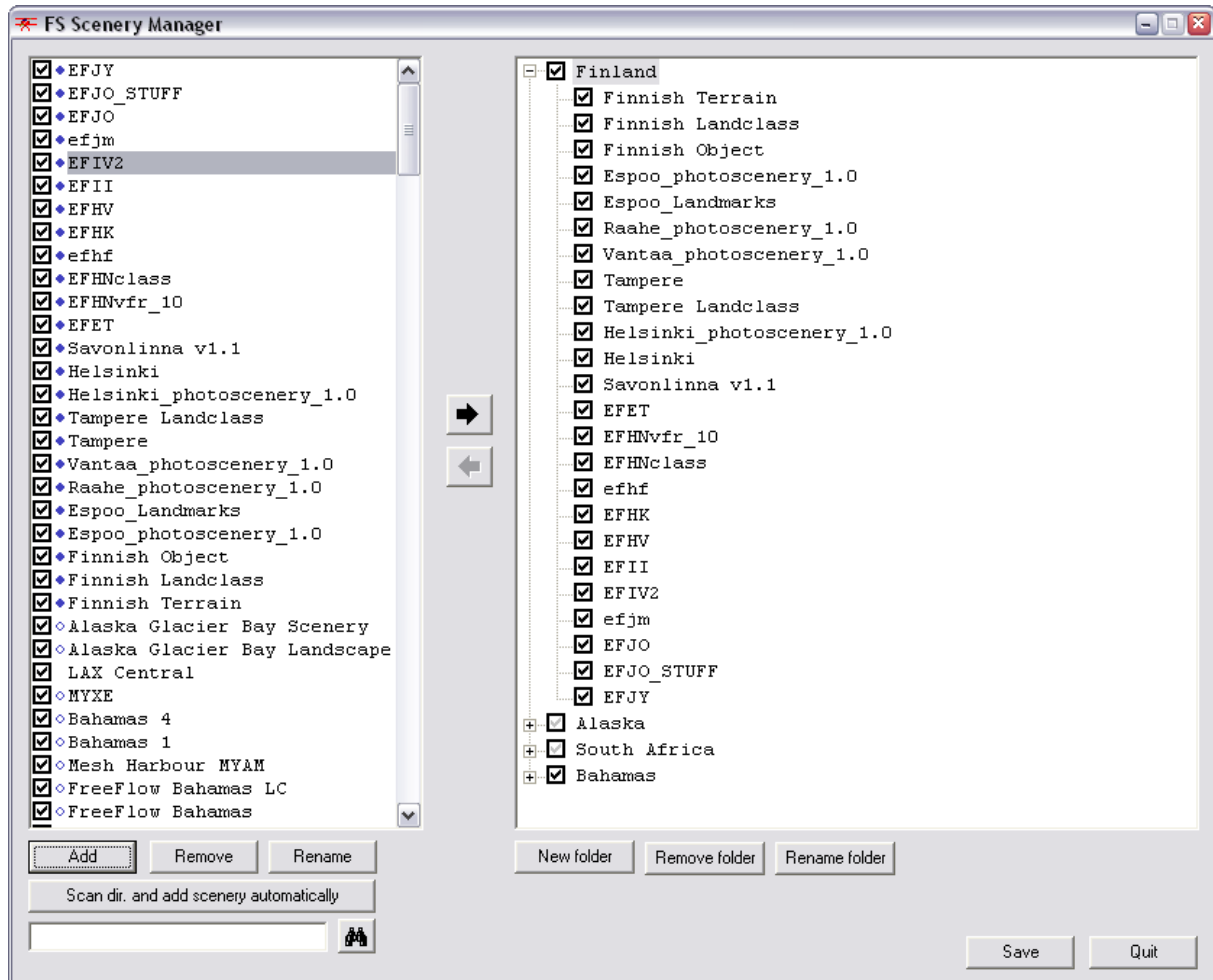


FS Scenery Manager V1.4



1. INTRODUCTION

FS Scenery Manager is a little tool to manage easily sceneries of FS2004.

The main particularity is the possibility to classify scenery into folder, for a simplified management of several sceneries in one click.

The scenery.cfg file is found automatically using the registry base.

If the registry base is corrupted, a dialog box asks you the path of your Flight Simulator 2004.

However, the best is to correct the registry base using the FS9 path utility of TweakFS :

http://tweakfs.com/features_tfs_pu.htm

2. CHANGES

2.1 Version 1.4 (10/10/2007)

Add a search function.

2.2 Version 1.3 (03/21/2007)

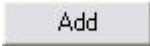
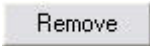
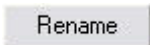
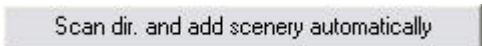
New friendly interface.

2.3 Version 1.2 (03/15/2007)

First released version.

3. SCENERY MANAGER PART

3.1 Description of the buttons :

-  : add a new scenery
-  : remove scenery
-  : rename scenery
-  : scan automatically all sceneries in a folder and add it with the folder name.

3.2 Add a new scenery

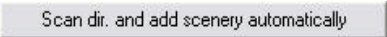
The Add button opens a browser to select a scenery folder.

The OK button of this window will be enable only if the folder is a valid scenery folder, with a sub-folder named "scenery" and containing a "bgl" file.

3.3 Scan a folder

For example: if you have a folder containing all sceneries of Hungary, and you have had enough of add one scenery by one scenery. This button is for you.



Click the  button, a folder browser opened, select the Hungary folder, and all the sceneries included in the main folder are added to the scenery list with the name of the folder.


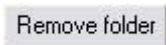
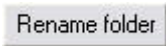


3.4 Re-order scenery

The re-order is doing by drag and drop. Select a scenery line and move it with the mouse (with left click pressed).

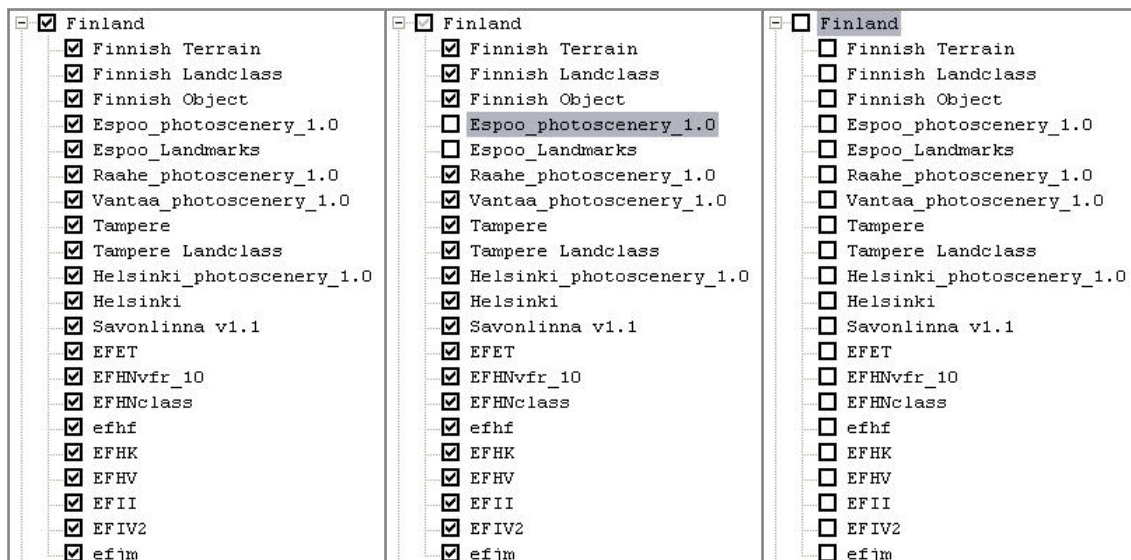
4. FOLDER MANAGER PART

4.1 Description of the buttons

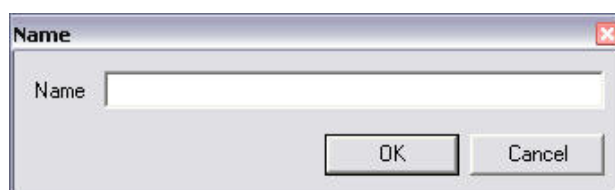
-  : add a folder
-  : delete the selected folder
-  : rename the selected folder


4.2 How to manage folders?

You can classify scenery by country, part of the world, or other stuff, and manage all the sceneries with one click as shown on the following screens.



To add a folder, click on the  button and enter the name of the folder




Now you can add scenery to this folder: select the folder in the right tree, select a scenery in the left list then click on the  button (or double click on the scenery line) to link the scenery to the folder.

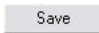
Remark: A scenery can be added to only one folder.

When a scenery is linked to a folder a little blue circle appears near the name of the scenery. It is useful to know if the scenery is already used in a folder.

Moreover, when you select a folder, the circle is filled for all the scenery of this folder.

To remove scenery to a folder, just select the scenery and click on the  button.

5. GENERAL PART

: save scenery.cfg and the folder.txt file which is located in the main FS folder. The "folder.txt" file contains the link between folder and scenery.

6. DISCLAIMER & LICENSE:

THIS SOFTWARE IS PROVIDED "AS IS" AND WITHOUT ANY WARRANTIES. INSTALLATION AND USAGE OF THIS SOFTWARE IS COMPLETELY AT YOUR OWN RISK! IN NO EVENT SHALL THE AUTHOR BE LIABLE FOR ANY PROBLEMS OR DAMAGES CAUSED DIRECTLY OR INDIRECTLY BY INSTALLING OR USING THIS SOFTWARE.

This software is freeware. It may be freely distributed, as long as no money is charged for it, and none of the included files is removed or modified. Personal usage is free. Using this software for any commercial purpose is not allowed without written permission of the author!

7. SUPPORT & CONTACT

If you encounter any problems while using this software, do not hesitate to ask a question by e-mail : fstools@hotmail.fr