



Installation Guide

FS Streaming COMM

Release 1.0



Manual release 1.0

Table of Contents

1	ABOUT THIS GUIDE	3
2	INTRODUCTION	4
2.1	PURPOSE.....	4
2.2	SCOPE	4
2.3	SYSTEM ORGANIZATION	5
3	DESCRIBING THE SOFTWARE INSTALLATION	6
3.1	KEY FEATURES.....	6
3.2	FIRST INVENTORY	6
3.3	FSSC ENVIRONMENT	6
4	INSTALLING, STARTING AND STOPPING FSSC	8
4.1	INSTALLING FSSC	8
4.2	STARTING FSSC	12
4.3	UNINSTALL FSSC.....	13

1 About this guide

This guide provide instructions for geniX' FS Streaming COMM (FSSC) program installation procedure and prerequisites. For detail on how to use FSSC, please read the User Manual provided by the installation procedure itself. You can find it into the main FSSC folder.

Note: In this document, Microsoft “A Century Of Flight” ® , Microsoft “Flight Simulator X” ® ,Microsoft Windows ® and Microsoft Windows Media Player series are registered trademarks of Microsoft Corporation.

In the document “MS-FS” is related to the above flight simulator products

2 Introduction

2.1 Purpose

FS Streaming COMM is a simple program that permits hearing of internet streaming while flying with Microsoft® Flight Simulator.

Upon the insertion of data into the FSSC Database, simply link a COMM frequency to an http stream, next change the frequency into the Flight Simulator and wait for hearing.

The program, instead, permits to select a chosen streaming avoiding the selection into the FS environment.

2.2 Scope

Scope of this guide is to provide a step-by-step installation instructions for FSSC. Further, some mandatory prerequisites are listed in order to run the program.

Note: This manual could covers early installation of the program as no changes could happens in the installation procedure.

2.3 System Organization

This document applies to:

- geniX' FS Streaming COMM
- Version 1.0
- All releases/builds

At the end of installation (see Cap.4), you'll find the following files into your (selected) main FSSC folder:

File(s)	Note
Datastreaming.cds	Internal database of FSSC user editable; contain some example of data
Midas.dll	Internal library of FSSC
FSSC.exe	Main executable
FSSC.ico	Main icon
FSSC.ini	Main FSSC configuration file
Release notes	Release notes
User Manual	User manual

3 Describing the software installation

3.1 Key Features

The installation file is a program named **setup.exe** that, once executed, starts a guided “wizard” for the correct installation of FSSC.

3.2 First Inventory

FSSC requires P.Dowson **fsuipc.dll** interface correctly installed and **user-registered** in the MS-Flight Simulator environment. See below for further info about FSUIPC.dll release to use.

3.3 FSSC Environment

To run FSSC is necessary:

- MS-Windows Me / XP / 2000 Operating system with Windows Media Player Series 9 minimum.
- P.Dowson fsuipc.dll version 3.82 at list (for FS2004) and 4.25 for FSX USER-REGISTERED (see note below)
- A running MS-Flight Simulator
- A live internet connection with a sufficient band to have a streaming connection.
- A default printer assigned into MS-Windows
- About 4 Mb of free disk space
- About 10Mb of free RAM memory
- 1024x768 is the best monitor resolution usable

We assume also that the system hardware configuration where FSSC will run are adequate to run MS-Flight Simulator (both versions).

.....
Note: FSSC run above an ALREADY REGISTERED FSUIPC.DLL: this mean the user is responsible for registering FSUIPC.

Warning: geniX is not responsible of FSSC malfunctioning if the fsuipc.dll is not correctly registered.
.....

3.3.1 Datastreaming.cds

Datastreaming.cds is the internal DB file the FSSC use for store streaming information such as:

IDENTifier, COM frequency, STREAM, BACKIDENTifier

FSSC do not perform any backup of this file, so is up to the user provide – if even – a backup mechanism to save this kind of file.

For further information, please see the FSSC User' manual.

4 Installing, Starting and Stopping FSSC

4.1 Installing FSSC

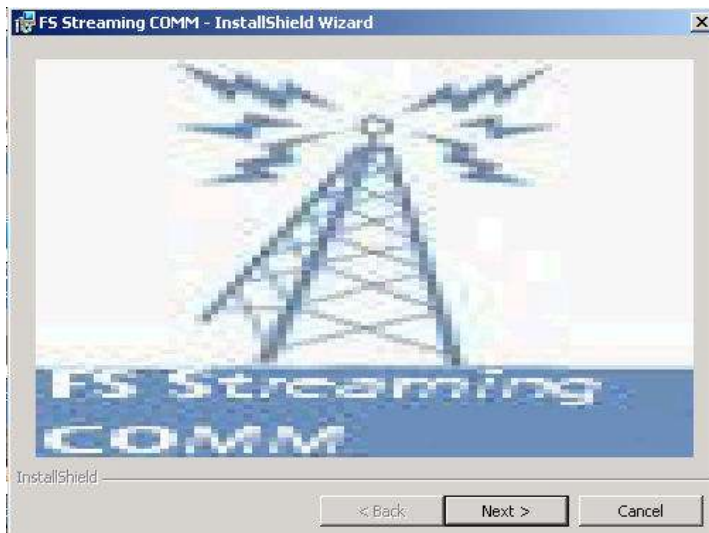
To install FSSC, decompress the file .zip in a temporary directory (as you have already done if you are reading this manual), and next execute the **setup.exe** provided.

The following chapter will provide focus on each installation wizard' items.

Note: The bitmaps that illustrates the setup process could contain different information

4.1.1 Step by step setup

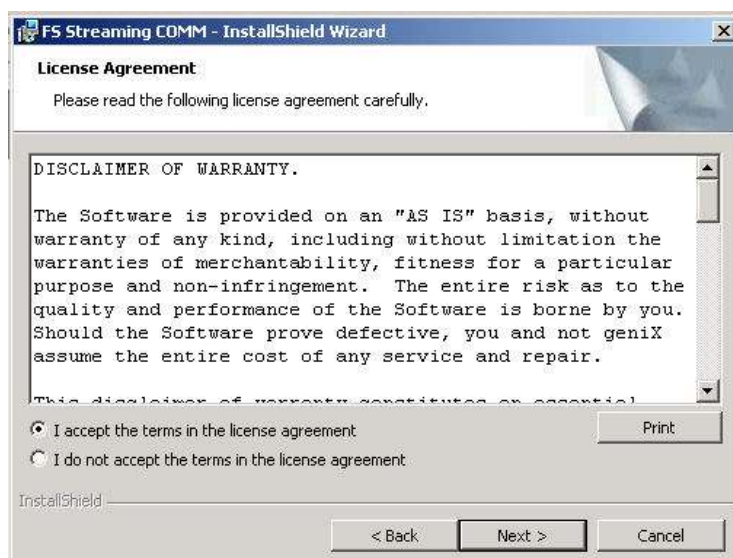
Once executed the **setup.exe**, the following window will appear:



Click <Next>



Click <Next>. There will be the *License Agreement*: read carefully



Click <Next>

After the acceptance of the license, the latest release note of the program will display in a dialog box.

After reading it carefully, please click <Next>

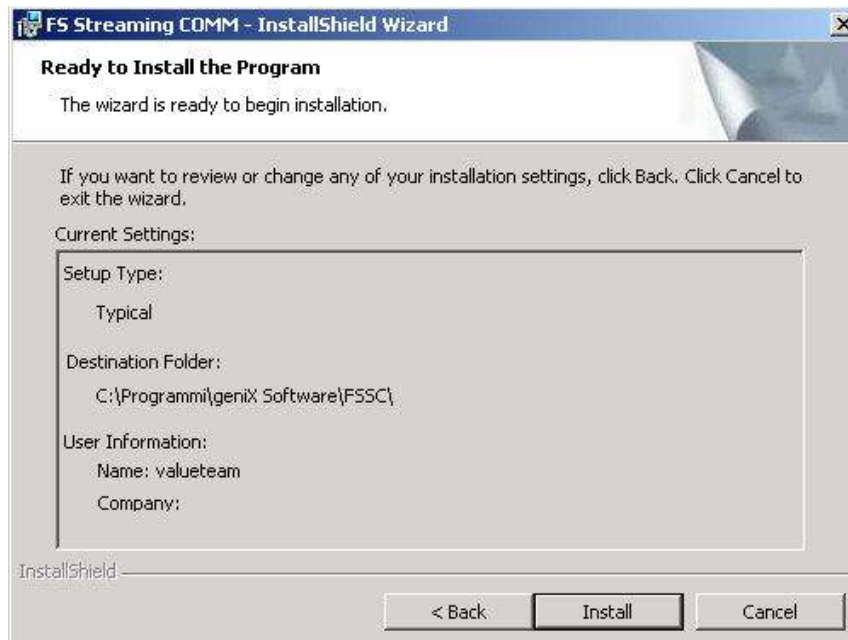


What we must do now is set the main FSSC folder; the default path is C:\<MS-Main Program path>\geniX\FSSC:

In the case you don't like the path, click on the <Change...> button in order to show the window for change the destination folder:



Here use the normal MS-Windows navigation features to select (or create) the destination folder. Once selected, click <Ok> and go forward:

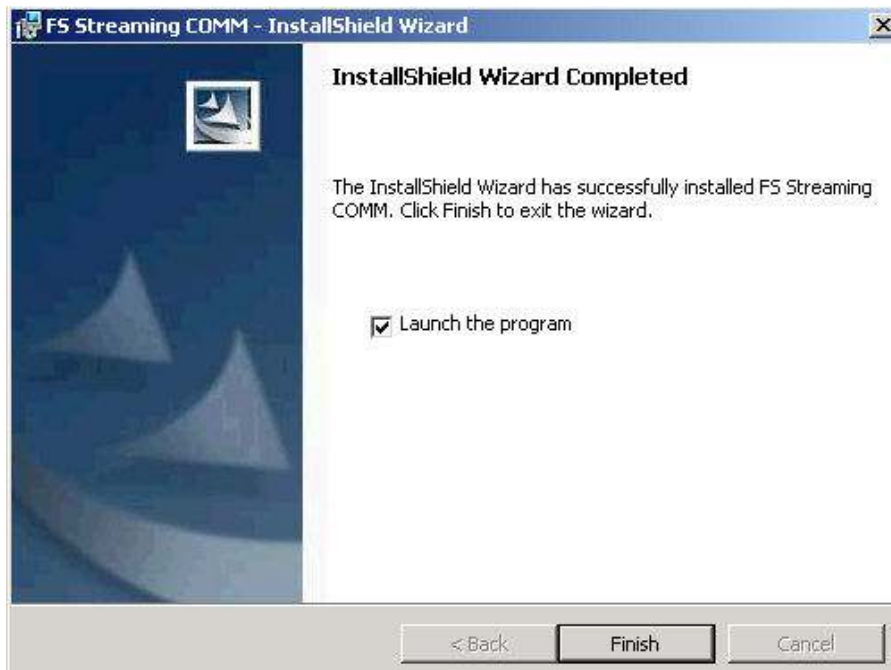


After the current settings review, click <Install> to start the true installation.



Copying new files...

...and at the end:



Click <Finish> to exit the setup procedure.

At this point on your MS-Windows desktop should appear the following icon:



4.2 Starting FSSC

Click twice on the desktop' icon of "*Launch FSSC.exe*".

For further instruction, please read the User' Manual

4.3 Uninstall FSSC

To uninstall FSSC from your system, please use MS-Windows' Control Panel window and click

Twice on the "Installed program" icon. A list of your installed programs onto the system will appear.

Select "*FS Streaming COMM*" item and click the <Remove> button. An automatic uninstallation procedure will start.

All items of your FSSC previous installation will be removed from your system.