



project freeware scenery zurich

Version 0.6

Readme

(English)

Content

Changes	3
Installation	4
Procedure with installed scenery	4
AES.....	4
Standard path (FS9\Addon Scenery\FreeZ)	4
Different path	4
New installation.....	4
Scenery Library.....	5
Runway lighting	7
Runway 16.....	7
Runway 34.....	7
Runway 14.....	7
Runway 32.....	7
Runway 28.....	7
Runway 10.....	7
Supported aircraft types	8
AES and FreeZ.....	8
Charts.....	8
Updates	8
How you can find us	9
Credits	9
Copyright.....	9

Changes

- Complete new lighting
 - Runway-lights with real colors
 - Edge lamps (blue)
 - Midfield stand lights (yellow)
 - Deicing stands have yellow stoplights
 - Taxiway holding bars (Runway ahead)
 - PAPIs overworked completely
 - Additional markers at the outer stands
- Small adjustments to the real airport
 - Taxiway signs reset according to the real antetype
- Buildings
 - Colour of Midfield glass has been improved

Installation

Procedure with installed scenery

AES

If FreeZ is being used together with AES, the installation has to be done like this:

- Deactivate FreeZ in AES and restart flight simulator
- FreeZ v0.6 installation (follow the steps below)
- Activate FreeZ in AES again and restart flight simulator

Standard path (FS9\Addon Scenery\FreeZ)

Remove the complete folder "FreeZ" (usually under "FS9\Addon Scenery\"). You do not have to change anything in scenery.cfg!

Different path

Remove FreeZ completely, also the entry in the scenery.cfg! Alternatively you can update the path after the installation.

New installation

Double click on the installer.

- Choose your language → Next
- Some information → Next
- License Agreement, activate checkmark → Next
- It's important, that the FS9 directory is in the field. If not, choose the FS9 root directory manually.

Warning: The installer automatically adds "\Addon scenery\FreeZ\" to the installation path!

- Choose the program directory (start menu) → Next
- Installation options
 - Choose the addon you're using for Switzerland. This selection will adjust the ground textures for this addon.
 - If you have had Mohler/Mice installed before, choose Yes.
 - If you want to see any runway lighting during daylight, activate this checkmark. The lighting is only visible, if you set the ILS frequency (NAV1) for the respective runway.
 - If you don't have FSUIPC installed yet, set the checkmark. If you already have a registered version of FSUIPC in use, this would overwrite it!
 - The activate module is need for our docking system. If you don't have it yet, select this option.
- → Install

- After the installation you can automatically open the readme.
- Check for new version. You can search for updates at any time. The auto updater can also be found in your program directory (start menu).
- → Finish

Scenery Library

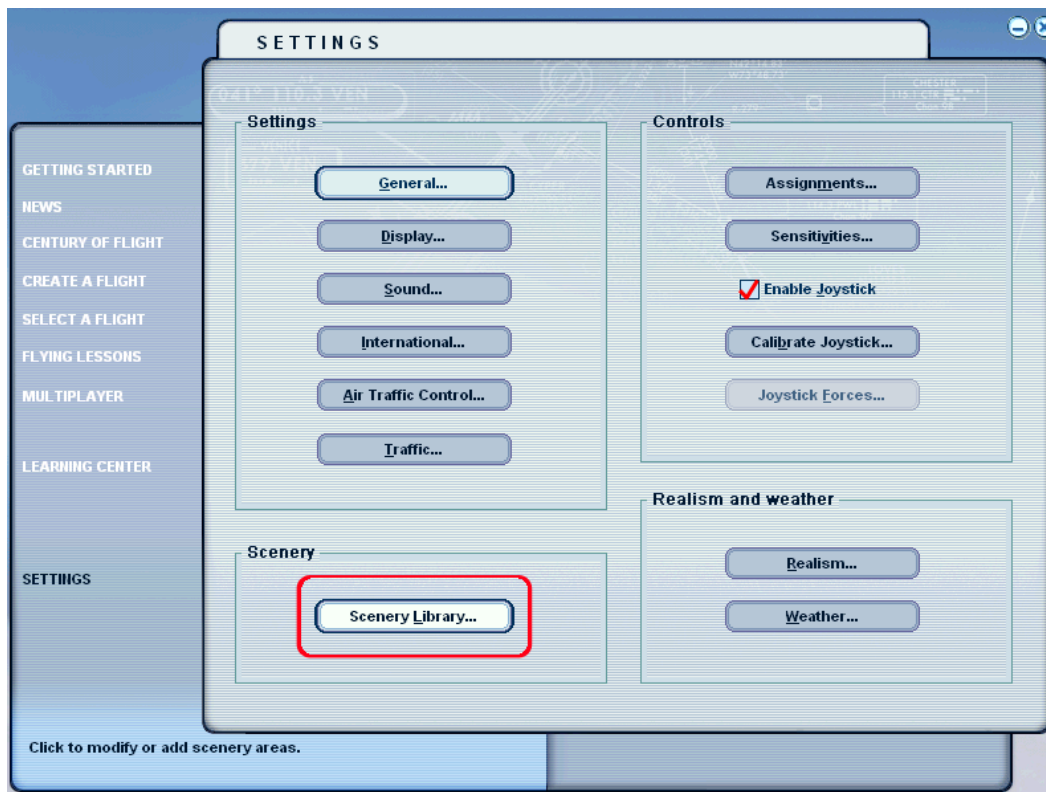
Here follows a detailed tutorial how to add a scenery to the scenery library.

Start your FS9

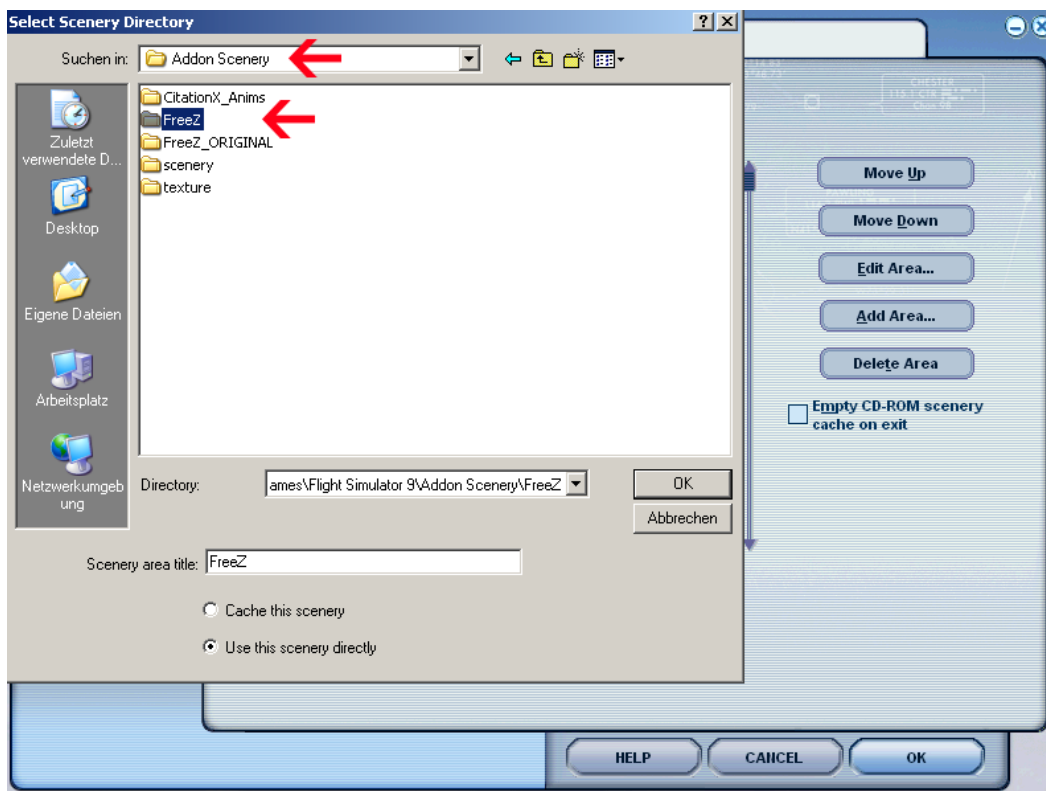


Open the scenery library, which can be found in the settings on the main screen.





Add the folder „FreeZ“. Depending on the installation path, the path can vary a little bit.



Restart your Flight Simulator – have fun!

Runway lighting

(ALS = Approach Light System (ILS))

Runway 16

- Standard: RWY Edges Light ON
- NAV1: 110.50: ALS ON
oder
- NAV2: 110.50: ALS ON

Runway 34

- Standard: RWY Edges Light ON
- NAV1: 110.75: ALS ON
oder
- NAV2: 110.75: ALS ON

Runway 14

- Standard: RWY Edges Light ON
- NAV1: 108.30: ALS ON
oder
- NAV2: 108.30: ALS ON

Runway 32

- Standard: RWY Edges Light ON
- NAV1: 108.40: ALS ON
oder
- NAV2: 108.40: ALS ON

Runway 28

- Standard: RWY Edges Light ON
- NAV1: 109.75: ALS ON
oder
- NAV2: 109.75: ALS ON

Runway 10

- Standard: RWY Edges Light ON
- NAV1: 109.85: ALS ON
oder
- NAV2: 109.85: ALS ON

Supported aircraft types

Here's a list of all aircraft types supported by our docking system. Nearly all aircrafts which aren't on this list can't use jetways in real either.

Airbus	Boeing	McDonnell Douglas	Embraer	Fokker	Avro
A320	B737		E170	F70	RJ85
A330	B747	DC10	E190	F100	RJ100
A340	B757	MD11			
A380	B767	MD80			
	B777				
	B787				

AES and FreeZ

There is one free AES version for FreeZ, fully functional but with advertising on the jetways. If you want to have FreeZ and AES without advertising, you have to pay 3 credits.

Visit www.aerosoft.com for further information.

Charts

The new charts can be found in the scenery folder of Freez or in your program directory(start menu). Online the charts can be found here: <http://www.vacc-sag.org/airport-info-and-charts/LSZH>.

Updates

From time to time we will release new versions of this scenery. Also a FSX-version of this scenery is planned.

We added a auto updater in this version. If it works fine, we will use this tool to release updates in the future.

How you can find us

Our website is: <http://www.freez.aero>

If the homepage isn't available, please try the following link: <http://lszh.aviation-art.ch>.

For questions and support, use the forum at <http://www.freez.aero/board> or write an email to support@lszh.aviation-art.ch.

For any suggestions, send us an email to suggestions@lszh.aviation-art.ch. Your opinions are very important to us, we would be happy about your feedback and suggestions.

Credits

We're thanking the following persons for their service:

Jürg Gänsli

Markus Zürcher

Lukas Kaufmann

Michael Meier

Andreas Schütz

Matthew Tomkins

Peter Wyss

Steve Feigenwinter

Bert Groner (FSMagazin)

Charts

Webmaster, Mirrorsponsor

Autogen Zurich

AFCAD

AFCAD, Photos

Trees

Mirrorsponsor

Mirrorsponsor

Sponsoring AES

Copyright

This scenery is freeware and must not be used for commercial purposes. Any files require our permission to be used for further disposal.

Copyright © 2007 by FreeZ. All rights reserved.

