

Euro Link VA SP1

Created by P E Slater

This package was developed for Euro Link Virtual Airline members though I decided to make it public.

This is package 1



Please note that I do not take any credit for the excellent sceneries within this package. I only created an executable file to make this easy to install.

Please read the credits at the end of this document to know who the real artists are! 😊

Contents

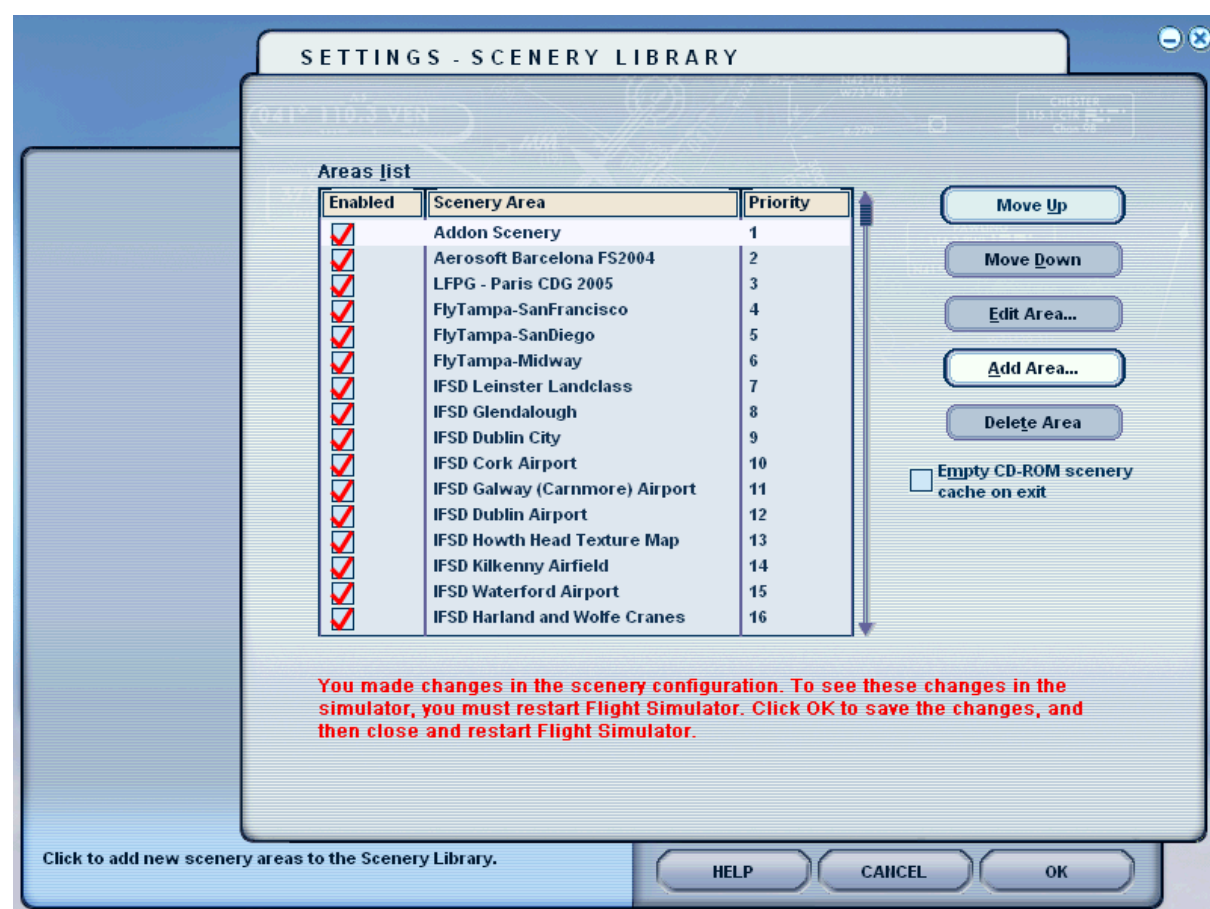
| | |
|--|----|
| Title Page..... | 1 |
| Contents | 1 |
| Contents | 2 |
| How to finish installing this package! | 3 |
| Adding EBBR (Brussels International Airport) | 4 |
| Adding EGPH (Edinburgh) | 5 |
| Adding Honolulu International Airport..... | 6 |
| Adding Princess Juliana International Airport..... | 7 |
| Adding Alicante | 8 |
| Completing the Scenery Upgrades..... | 9 |
| Credits | 11 |
| Updated AFCADS..... | 11 |
| How to revert back to the original EBBR (the non up-to-date) | 11 |
| Contact Information..... | 11 |

How to finish installing this package!

Now that the files are installed (you should have run the file called 'euro_link_va_sp1.exe' we need to add the areas of scenery to the Flight Simulator 9 library.

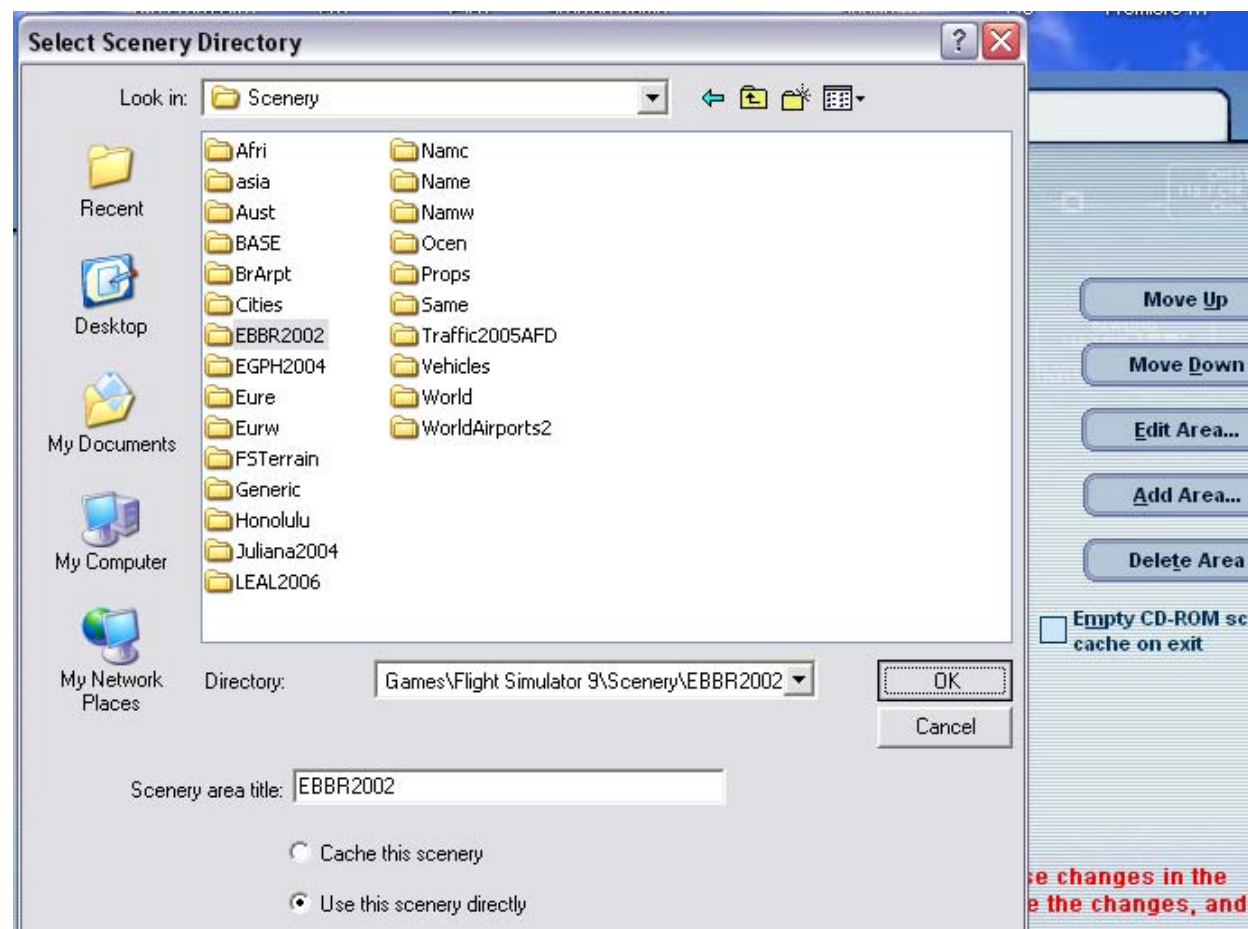
To do this start up Flight Simulator and on the main screen please click on your "Settings" and then "Scenery Library".

You should see something like this:



On the next few pages are screen shots along side simple instructions on how to add the area of scenery.

Adding EBBR (Brussels International Airport)



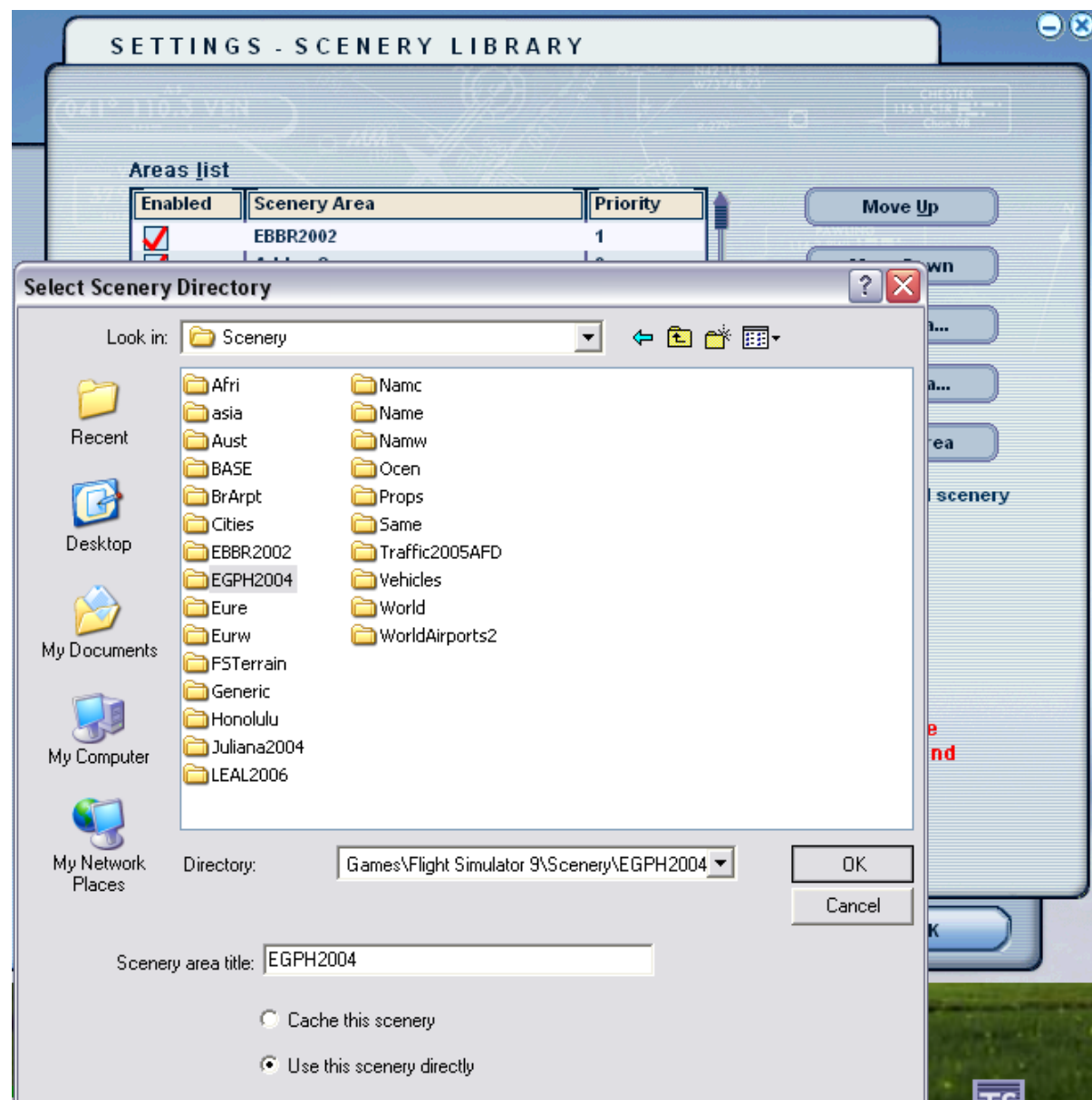
1. Click on 'Add Area ...'
2. Go to the following folder:

C:\Program Files\Microsoft Games\Flight Simulator 9\Scenery

*Note: You may have installed flight simulator into a different directory !
This document assumes that you have installed FS9 to the default location as illustrated above!*

3. Select the 'EBBR2002' folder as shown above and click 'OK'

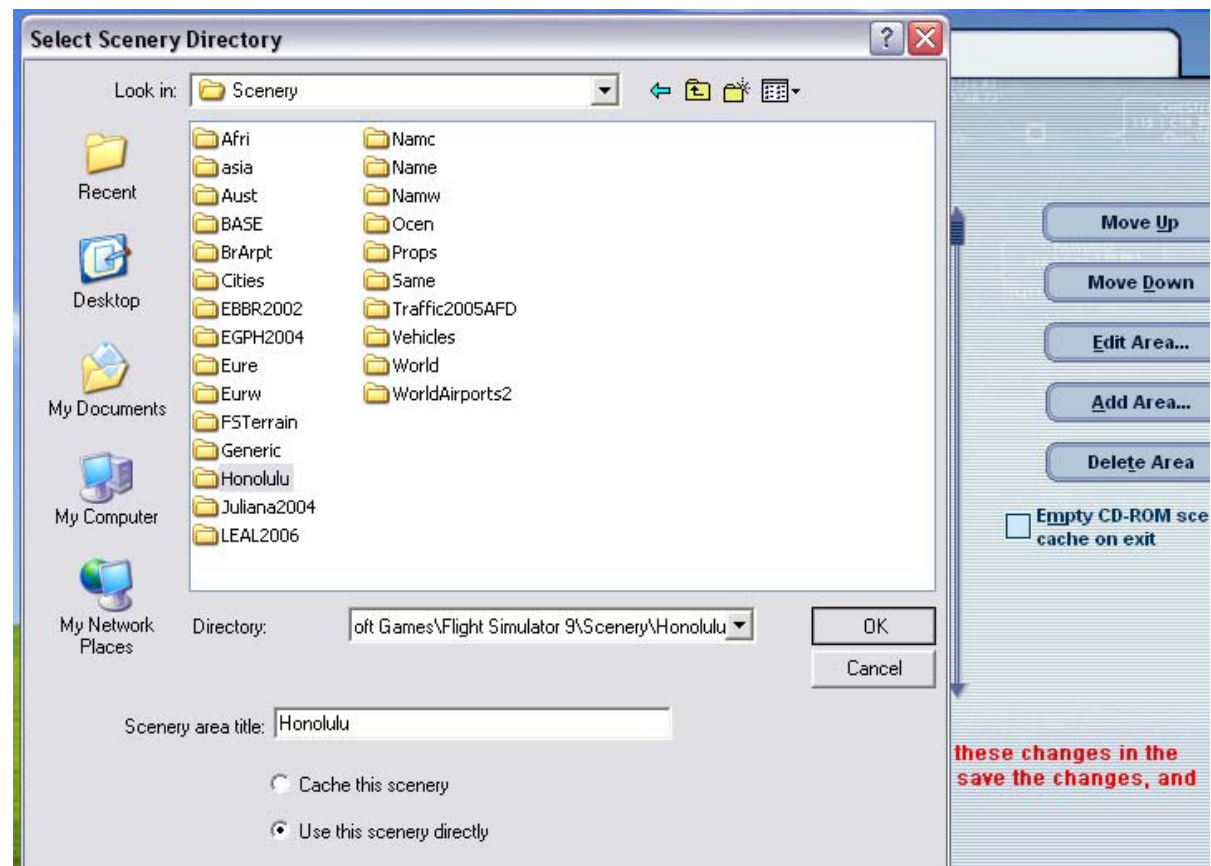
Adding EGPB (Edinburgh)



1. Click on 'Add Area ...'
2. Go to the following folder:
C:\Program Files\Microsoft Games\Flight Simulator 9\Scenery
3. Select the 'EGPB2004' folder as shown above and click 'OK'

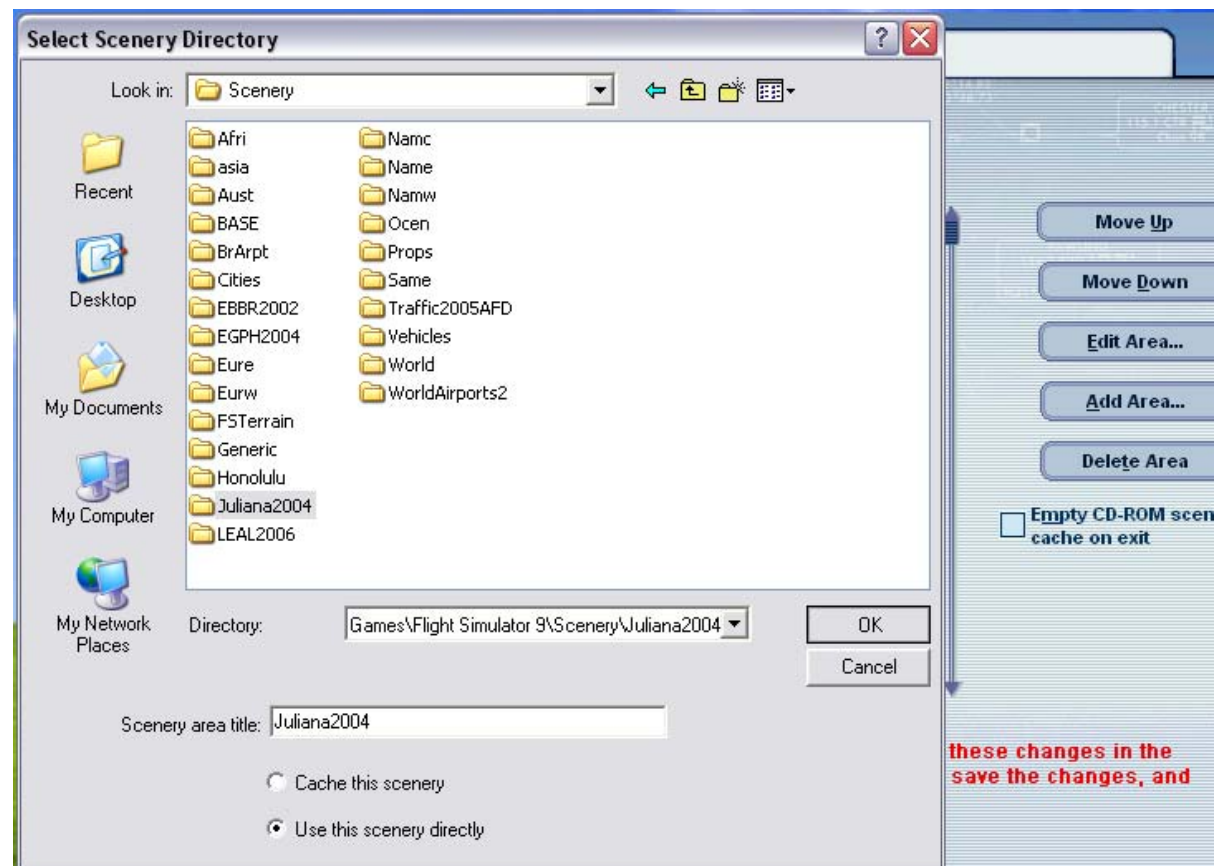
Notice that EBBR2002 appears in the scenery library list at the top!

Adding Honolulu International Airport



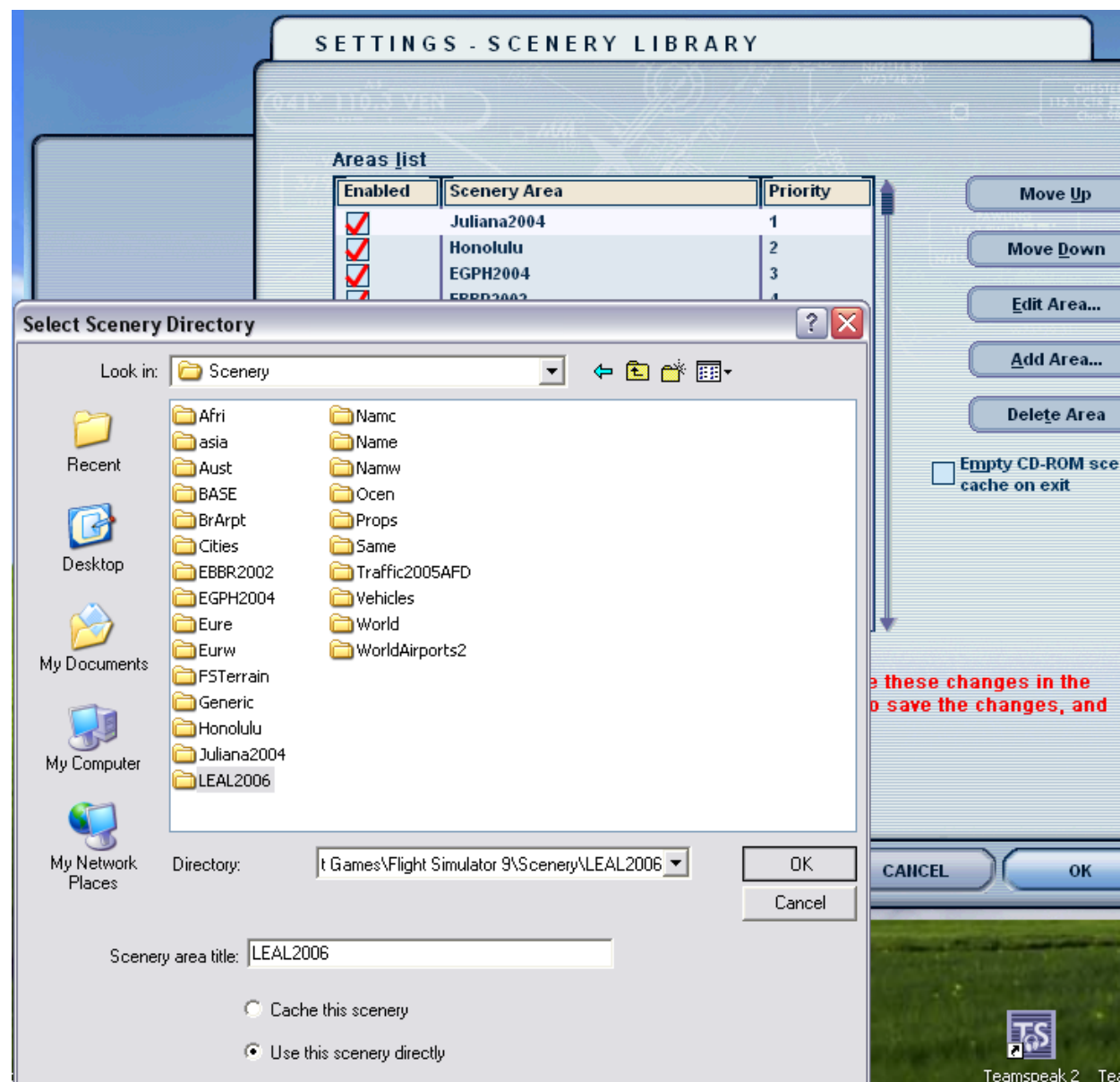
1. Click on 'Add Area ...'
2. Go to the following folder:
C:\Program Files\Microsoft Games\Flight Simulator 9\Scenery
3. Select the 'Honolulu' folder as shown above and click 'OK'

Adding Princess Juliana International Airport



1. Click on 'Add Area ...'
2. Go to the following folder:
C:\Program Files\Microsoft Games\Flight Simulator 9\Scenery
3. Select the 'Juliana2004' folder as shown above and click 'OK'

Adding Alicante

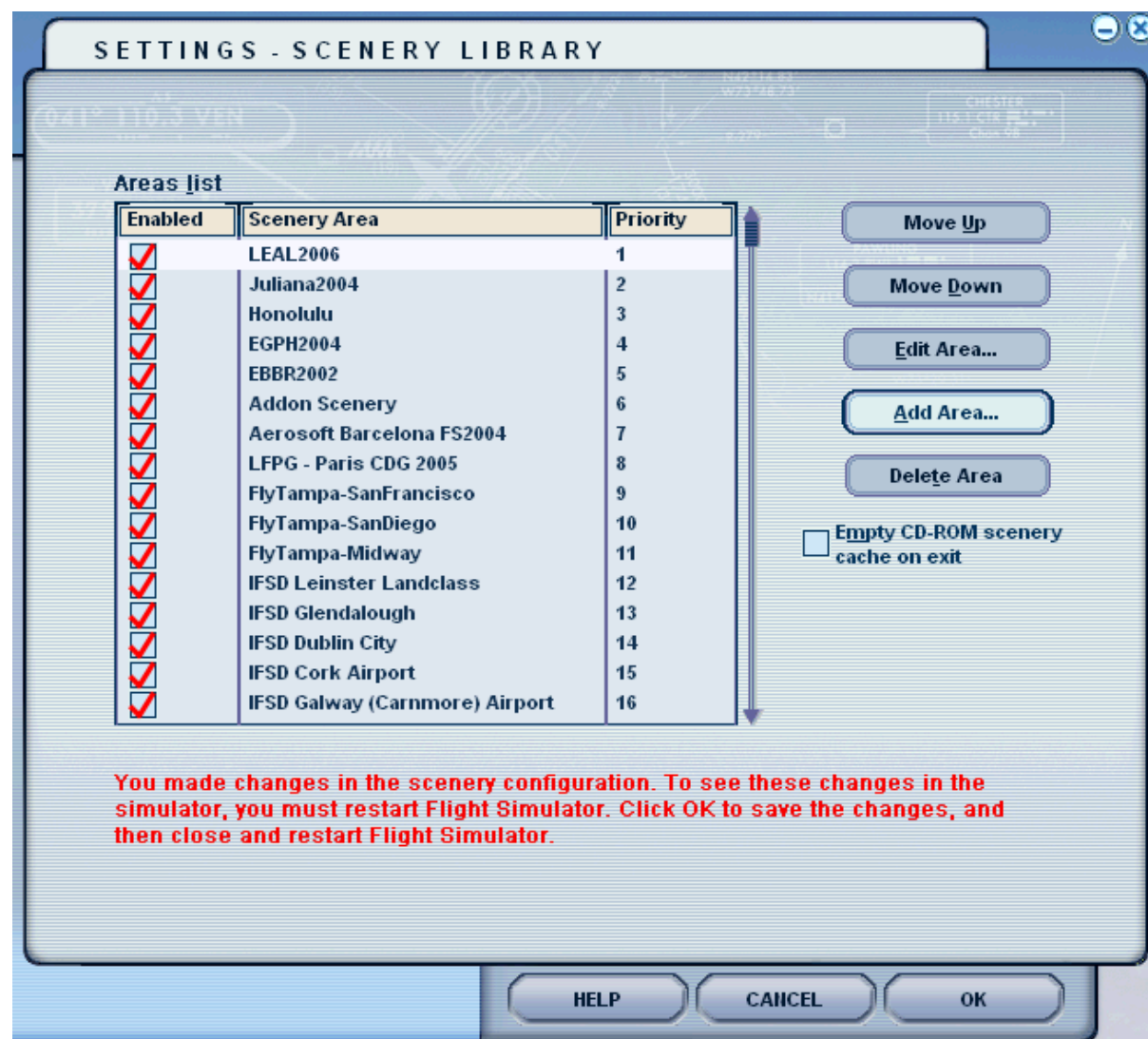


1. Click on 'Add Area ...'
2. Go to the following folder:
C:\Program Files\Microsoft Games\Flight Simulator 9\Scenery
3. Select the 'LEAL2006' folder as shown above and click 'OK'

Notice that Juliana2004 appears in the scenery library list at the top!

Completing the Scenery Upgrades

After adding all the scenery areas (the past few pages) you should have a similar list to the one below:

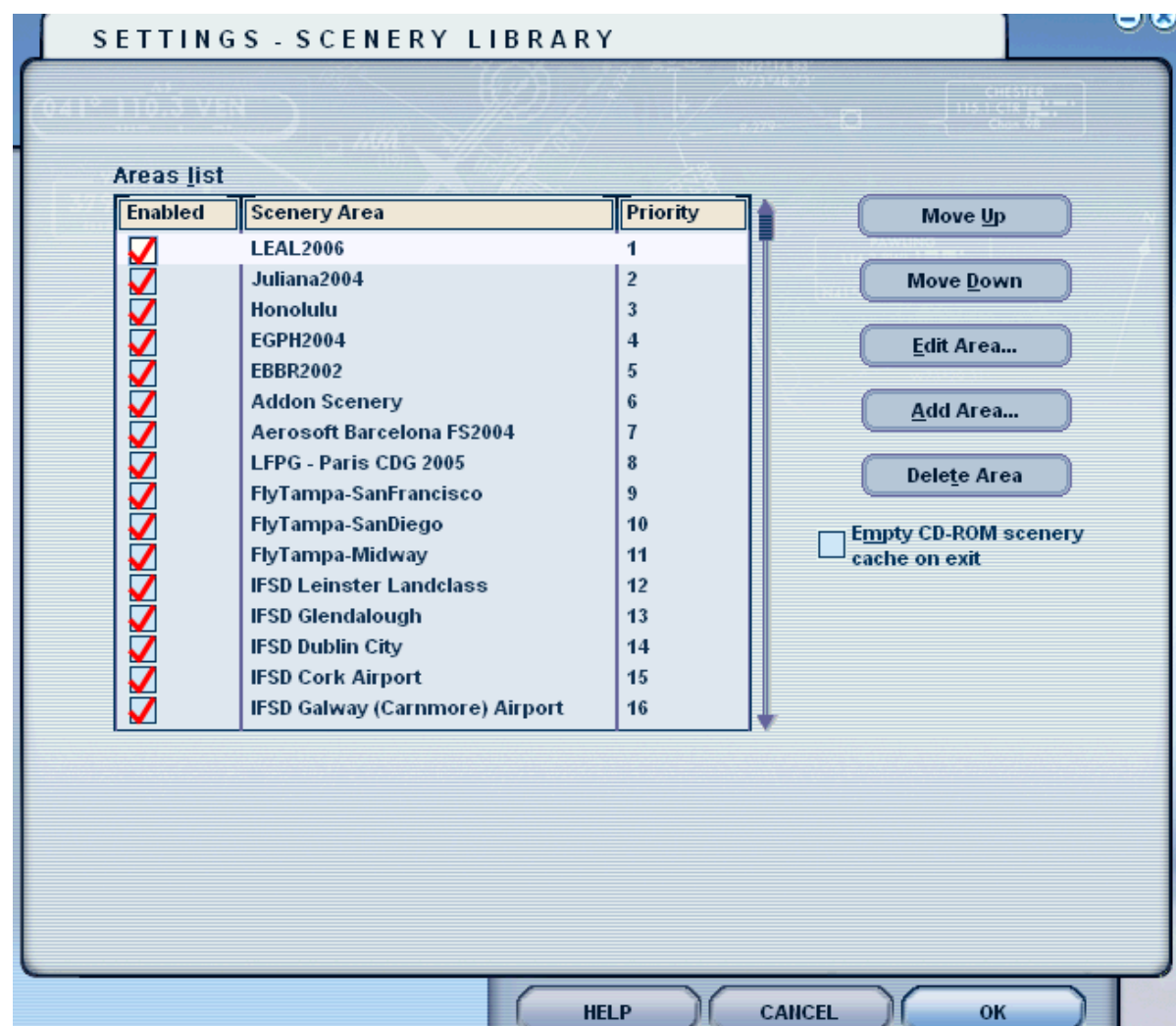


Note: You may not have Fly Tampa or Aerosoft scenery as I do. You can get the IFDS (Irish Flight Design Scenery) from [here](#) as it is currently free.

Notice something? The red text is asking you to restart flight simulator. This is so that FS9 can build the database up again to allow for the new added areas of scenery to work!

Restart flight simulator now, and then read on ...

After you have restarted Flight Simulator your scenery library should look like this:



It is highly recommended that you keep 'EBBR2002' above 'Addon Scenery'

That's it! You now should be able to go away and fly to these new destinations.

A few notes though:

- ✚ At Juliana the scenery is very dense. If you are finding that your frame rates are lagging a lot I recommend you don't use the FS scenery shadow option when you are flying to or from this airport. For the non powerful computer users I recommend you decrease the FS scenery complexity in the FS9 settings (Display).
- ✚ Any other issues you can find the readme files for each scenery addon within your start menu located in 'Euro Link\Scenery'.

Thank you to all of those who allowed me to upload this package!
Remember to search www.avsim.com for 'Peter Slater'

Credits

I would like to personally thank all those who have allowed this wonderful work to be FREEWARE.

Here are the champions we all can thank for such delightful achievements:

1. Brussels (EBBR in Belgium) Scenery by Robert Buysen
2. Edinburgh Scenery by Iain Gallacher
3. Honolulu Scenery by Bill Melichar
4. Juliana Scenery by Delblond Christian
5. Alicante Scenery by Miguel Angel Pérez Soria

Updated AFCADS

Up to date AFCADS for all airports can be found at either www.avsim.com OR at <http://afc.ad.projectai.com/>

I have installed all up to date AFCADS though so you shouldn't have any major trouble!

How to revert back to the original EBBR (the non up-to-date)

To revert back to the original EBBR AFCAD all you need to do is make sure that the 'Addon Scenery' is above the 'EBBR2002' within the scenery library!

I installed the up-to-date version of the AFCAD by default so hence why I ask you to keep EBBR at the top of the list!

Contact Information

To contact me please use my web site found at:

www.peterslater.co.nr