



## **Blackpool EGNH Scenery**

**For**

## **Microsoft Flight Simulator X**

© 2008 Ian Broadbent

## Introduction

Thank you for downloading this freeware scenery, it's the first in hopefully a long line of scenery that will include Northern Ireland, and extend into Eire eventually.

I chose to do Blackpool Airport (EGNH) as it is my local airport and I worked there in the late 1970s for the then British Island Airways.

All of the buildings on the airfield are scratch built, a couple of the buildings are hand me downs from my previous FS9 scenery for Blackpool (Fylde V3) I have also included a slightly modified Blackpool tower. The tower has the nickname "the tall tower" given to it by ATC since the radio call sign of the control tower is "Blackpool Tower". Inbound VFR traffic to the airport from the north is often requested to call east or west abeam the tall tower depending on the runway in use.

It should work with default scenery but has been designed to work with Horizons VFR scenery and should also work with Just Flights incarnation as well.

## History of the airport

Blackpool International Airport sits at the southern end of the town of Blackpool, Lancashire, UK, in an area known as Squires Gate. There have been aviation activities at Squires Gate since 1909 when the UK's first major air show was held.

In 1927 a second airfield was opened at Stanley Park, to the east of the town. This closed in 1936 after more airlines used Squires Gate. The Stanley Park airfield became the town's zoo.



During World War 2 Vickers opened a factory at the North East Corner of the airfield. This factory was important for the war effort as it turned out several thousand Wellington Bombers. It later became a Hawker factory and was a manufacturing site for Hawker Hunters. The factory is still there and is used by various companies as industrial units.

Blackpool was once home to a Vulcan Bomber, which was sold by e-bay auction to a pub landlord from Manchester. Unfortunately the airframe was in too poor a state to be moved by road and eventually was sold for scrap.

Several airlines have operated out of Blackpool including British Island Airways, Air UK, Ryan Air, Jet 2.com and Manx2.com. Blackpool also has a thriving GA scene with flying training organisations such as Westair, Blackpool Air Centre, Air Navigation and Trading Co.



Blackpool Airport has had several owners over the recent years, In the late 1990s it was sold to City Hopper Airports Limited who bought a 95% stake in the airport. Although City Hopper had great ideas for the airport, enticing the likes of Ryan Air and Jet2, it sold its interest after a few years ownership to MAR properties. In May 2008 the airport was sold to Balfour Beatty.

The airport continues to grow in demand, with planned upgrades to its taxiways and infrastructure in the pipeline.



## Aerodrome Information



### Airfield Reference Point:

N53° 46.2937' W003° 1.7137'

### Airfield Elevation:

34 ft

### Runways:

Designator	Length x Width	True Bearing	Surface
RW 07/25	799 x 30	067 / 247	Ashphalt
RW 10/28	1896 x 46	094 / 274	Ashphalt
RW 13/31	1077 x 23	127 / 307	Ashphalt

### Radio Communications / Navigation Aids:

Facility	Frequency
<b>Radio</b>	
Tower	118.400 MHz
Approach	119.950 MHz
ATIS	121.750 MHz
<b>ILS (Cat 1)</b>	
I-BPL	108.15 MHz
<b>NDB</b>	
BPL	420 KHZ

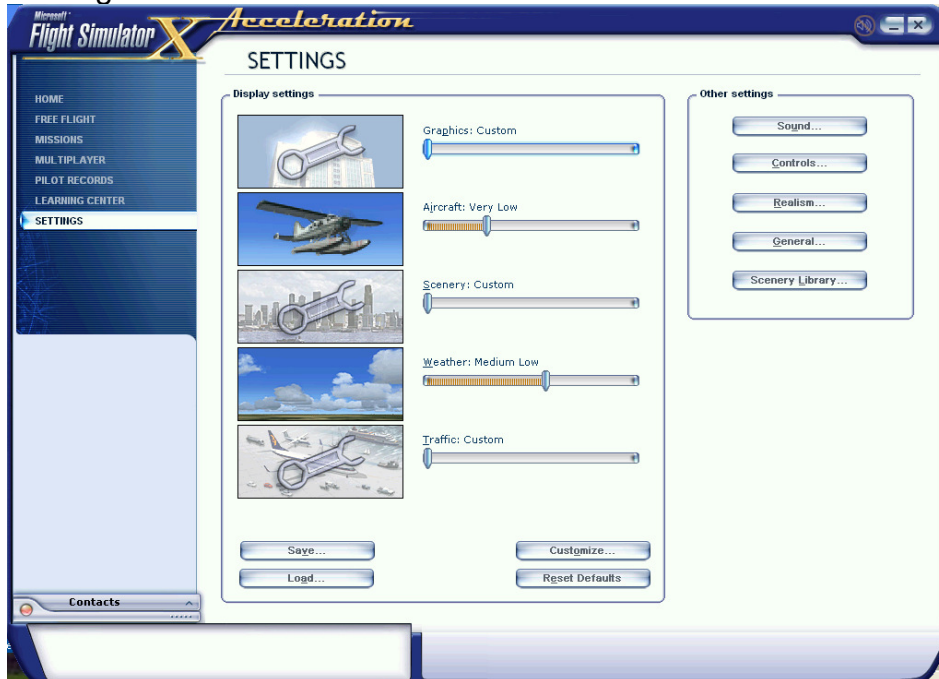
## Installation

Please remember this scenery is for Flight Simulator X only (all releases) it WILL NOT WORK with FS9 or earlier.

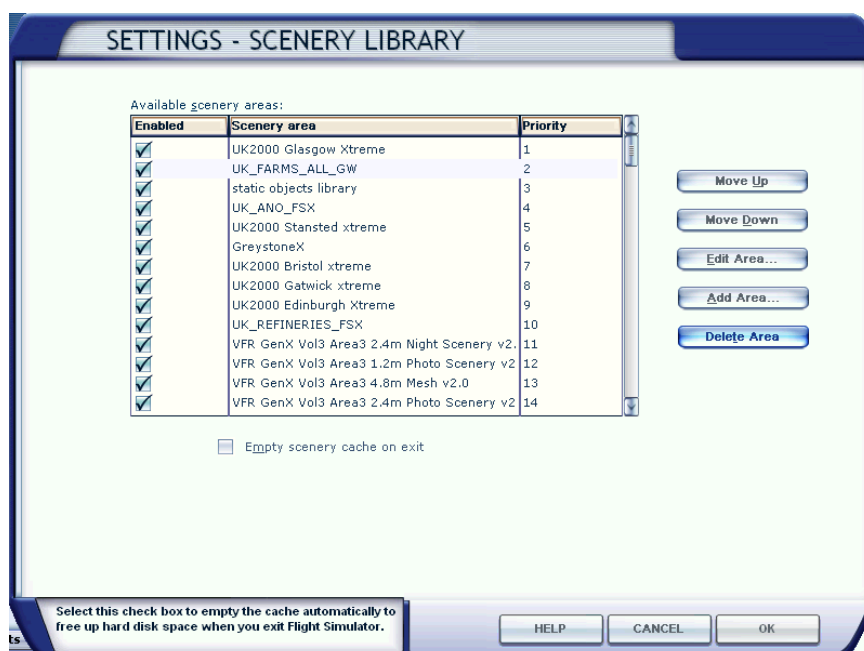
Unfortunately there is no installer for this scenery, however it is very easy to install.

Steps:

1. Copy the folder idbscenery to the folder where your FSX resides. (*By default this is C:\Program Files\Microsoft Games\Microsoft Flight Simulator X*)
2. Run FSX
3. Select Settings

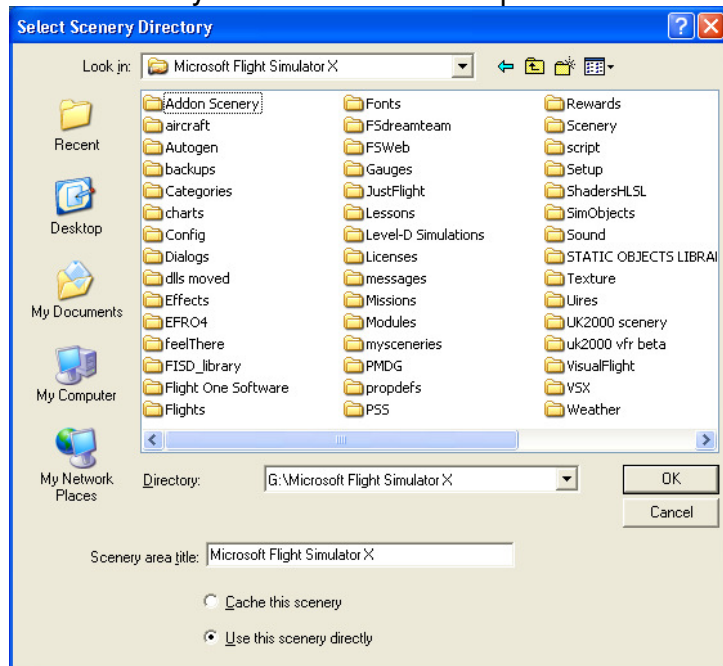


4. Select the “Scenery Library” button (Right hand side under “other settings”)



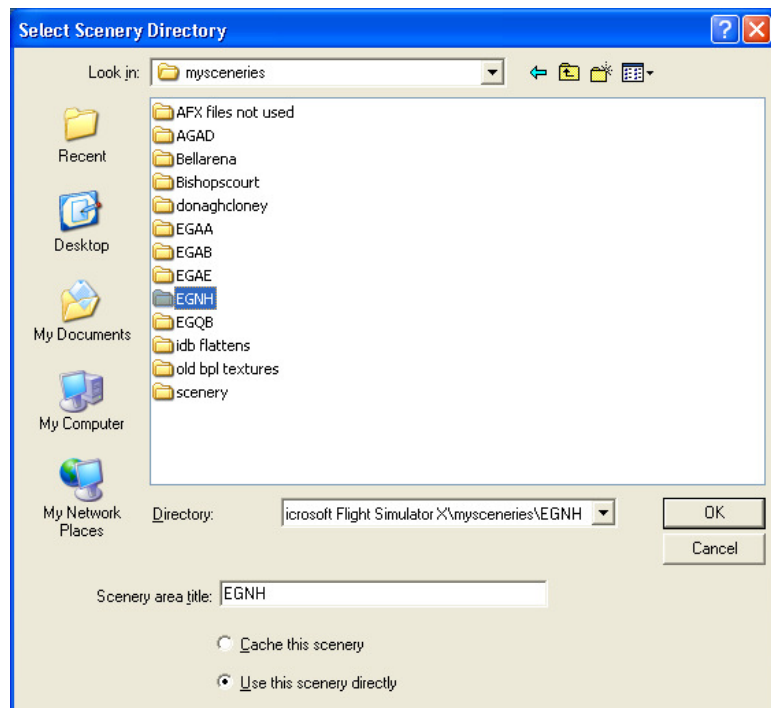
Yours will look different unless you have the same scenery installed as me.

5. Select “Add Area” and you will have a file requestor box a little like this:



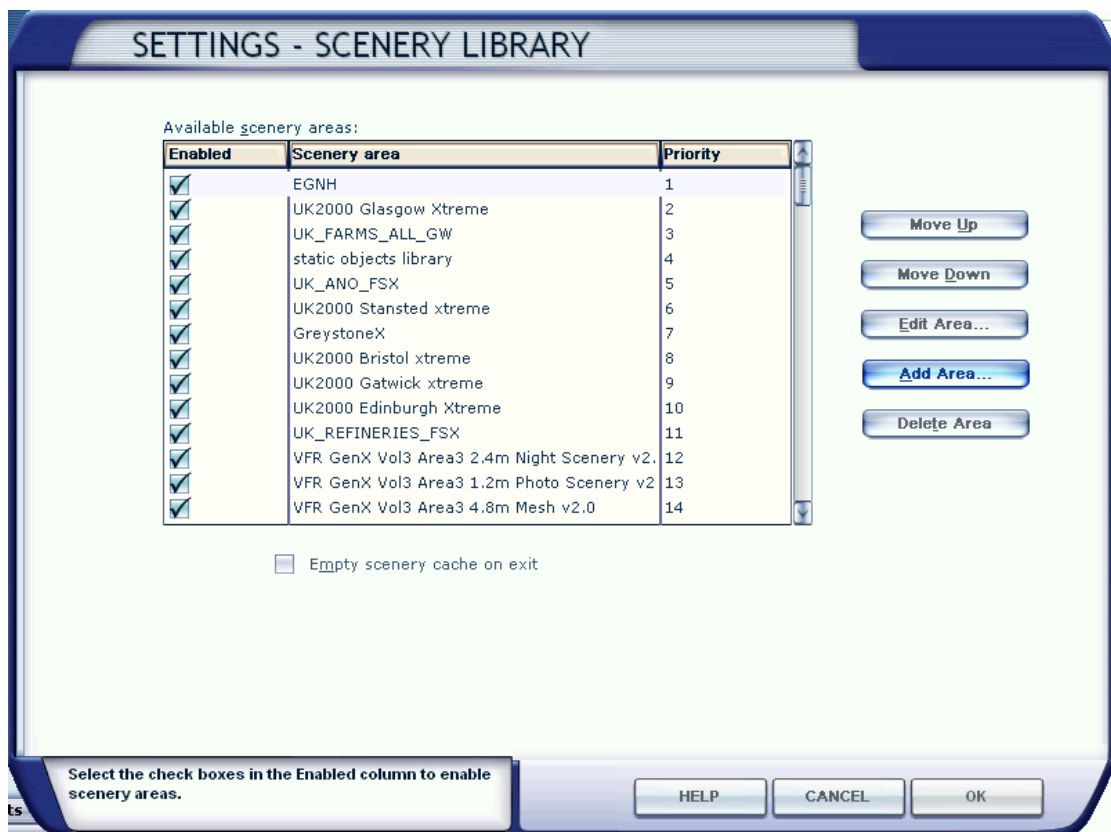
Again yours will be different to mine.

6. Select the idbscenery folder and when that opens, select the EGNH folder. Please note that this distribution only includes EGNH so don't be worried that I have a number of folders, or the fact that the folder name containing the folders in this example is “mysceneries” Its just where I keep them as I design my sceneries



You will see that near the bottom the “Scenery area title is “EGNH”, you can change this name if you wish or leave it as it is.

7. Select OK and the following screen will appear (Again yours will differ from mine)  
The important thing is that EGNH is at the top of the list and has a tick in the enabled box



8. Select OK and the sim will rebuild its library and indices. That’s it, go flying as normal and enjoy

### Known issues

- Taxiway markings have a few problems and will be rectified in an update.
- Heavier aircraft taxi down Bravo and Charlie, despite them being too heavy, I cant figure a fix for this as yet.
- No animated radar scanner – again I haven’t found a fix.

### Future updates

In a future update I will put in buildings on the approaches such as Pontins holiday camp, and the south side industrial estate. Also increase the number of buildings in the north side industrial estate.

**Thank you to:**

Graham Jackson for beta testing the scenery.

Horizon for a great photo scenery

**Scenery created with:**

FSDS V3.5.1

AFX

Instant Scenery

Photoshop

**Copyright Notice**

This Scenery is released as Freeware. Copyright Ian Broadbent. As freeware you are permitted to distribute this archive subject to the following conditions,

- The archive must be distributed without modification to the contents of the archive. Redistributing this archive with any files added, removed or modified is prohibited.
- The inclusion of any individual file from this archive in another archive without the prior permission of the author is prohibited. This means, for example, that you may not upload an archive that uses our visual models with your own scenery or include it in a package containing other scenery without first obtaining the authors' permission.
- No charge may be made for this archive other than that to cover the cost of its distribution. If a fee is charged it must be made clear to the purchaser that the archive is freeware and that the fee is to cover the distributor's costs of providing the archive.
- The authors' rights and wishes concerning this archive must be respected.

Copyright 2008 by Ian Broadbent. All Rights Reserved.

Contact

Ian Broadbent – [ian.d.broadbent@btinternet.com](mailto:ian.d.broadbent@btinternet.com)