



Texas Triangle Fly-In

Undertake a guided aerial tour flying over each city featured in 'City Update III: Texas,' released free of charge by Microsoft.

Fly along metropolitan areas, within or near the 'Texas Triangle,' where most of the state's population resides and which is home to its most fascinating architectural creations.

Fly over Austin's Frost Bank Tower, San Antonio's famous Alamo, the Brazos River with Waco's Suspension Bridge, Abilene, Austin, Cedar Park, Schertz, Temple and many other landmarks of the 'Lone Star State.'

- **No. of Legs:** 4
- **Total distance:** 378 nm



Texas Triangle Fly-In

Legs

Leg 1: KSKF - KGTU

Departure: Kelly Fld (KSKF)

Destination: Georgetown Mun (KGTU)

Distance: 103,4 nm



POI1-San Antonio Missions



Distance:	5,5 nm
Dist. from Dept.:	5,5 nm
Dist. to Dest.:	97,9 nm
True Course:	104°
Magnetic Course:	100°

You are cleared for take-off from runway 16 at Kelly Field airport.

When in the air, turn left and proceed to San Antonio Missions.

The San Antonio Missions are an important landmark in Texas history and bear witness to the cultural and religious heritage of the region.

In addition to their historical importance, the missions also offer learning opportunities, with museums, exhibitions and educational programmes illustrating colonial life, indigenous traditions and the role of the missions in shaping local culture.

They were declared a UNESCO World Heritage Site in 2015.



Texas Triangle Fly-In

Mission San Antonio de Padua (Alamo Mission): The Alamo Mission, also known as Mission San Antonio de Padua, is the most famous of the San Antonio missions. Founded in 1718, it played a significant role in the history of Spanish and Texas settlements. Today, it is a major tourist attraction in San Antonio, with its famous building, the Alamo, attracting visitors from all over the world.

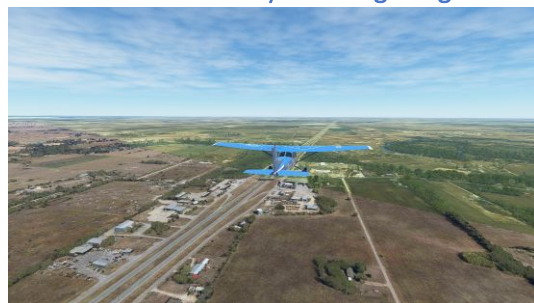
Mission San José y San Miguel de Aguayo: Founded in 1720, Mission San José is considered the 'Queen of the Missions' and has one of the most complete architectural structures of the missions in San Antonio. It is an outstanding example of Spanish colonial architecture and houses a visitors' centre that provides information on the history and culture of the missions.

Mission San Juan Capistrano: Founded in 1731, the Mission San Juan Capistrano is one of the best preserved missions and has a church and a complex of surrounding buildings. It is known for its rich cultural history and houses a visitors' centre offering information on indigenous traditions and Spanish colonial life.

Concepción Mission: Founded in 1731, the Concepción Mission features a beautiful Baroque-style church and a central plaza. It is one of the oldest missions in the United States and is known for its unique architectural decorations.

Espada Mission: Founded in 1731, the Espada Mission is characterised by its cross-shaped church and the beautiful aqueduct that supplied water to the settlement. It is the most remote of the five missions and is located south of San Antonio.

POI2-Bexar Community Shooting Range



Distance:	17,0 nm
Dist. from Dept.:	22,5 nm
Dist. to Dest.:	80,9 nm
True Course:	62°
Magnetic Course:	58°

Turn slightly left and make visual contact with Interstate 10 to reach Bexar Community Shooting Range.

The Bexar Community Shooting Range is a popular destination near Shertz.

The range offers a safe and affordable experience for shooters of all levels.

The range features a variety of shooting bays, including pistol, rifle, and shotgun areas.

POI3-New Brunfels



Distance:	12,8 nm
Dist. from Dept.:	35,2 nm
Dist. to Dest.:	68,2 nm
True Course:	16°
Magnetic Course:	12°

Look to your left and you should be able to see the urban area of New Brunfels.

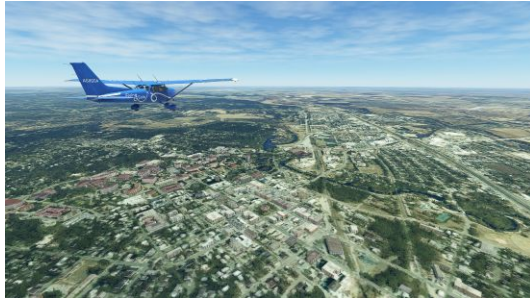


Texas Triangle Fly-In

It is situated between San Antonio and Austin and is known for its German heritage.

The city is home to several tourist attractions, including Schlitterbahn Waterpark, Gruene Historic District, and Landa Park.

POI4-San Marcos



Distance:	14,6 nm
Dist. from Dept.:	49,8 nm
Dist. to Dest.:	53,6 nm
True Course:	42°
Magnetic Course:	38°

Continue in a northeasterly direction along Interstate 35.

San Marcos is home to Texas State University, which is one of the largest universities in the state.

BUDA-Buda



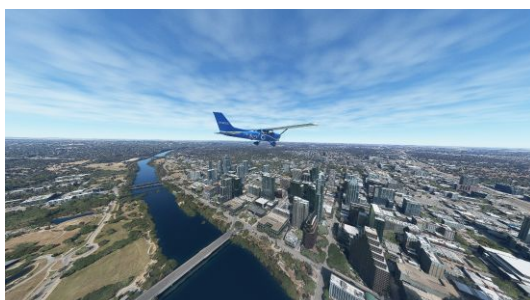
Distance:	13,0 nm
Dist. from Dept.:	62,8 nm
Dist. to Dest.:	40,6 nm
True Course:	23°
Magnetic Course:	20°

Continue along I-35 and reach Buda.

It is a part of the Austin-Round Rock metropolitan area and is situated about 15 miles south of downtown Austin.

Buda has a rich history that dates back to the 1880s when it was established as a railroad town. It was named after the early settlers Cornelia and Dr. John Buda.

POI5-Austin



Distance:	12,4 nm
Dist. from Dept.:	75,2 nm
Dist. to Dest.:	28,2 nm
True Course:	25°
Magnetic Course:	22°

Stay on course and you will soon be flying over Austin.



Texas Triangle Fly-In

Austin, Texas is the state capital of Texas and the fourth-most populous city in the state.

The city has a diverse population and a thriving economy, with a strong presence in technology and healthcare industries.

Some of the top attractions in Austin include the Texas State Capitol, the University of Texas at Austin, and the Congress Avenue Bridge, which is home to the largest urban bat colony in North America.

The city also hosts several festivals throughout the year, including South by Southwest, Austin City Limits Music Festival, and the Texas Book Festival.

POI6-Cedar Park



Distance:	14,5 nm
Dist. from Dept.:	89,7 nm
Dist. to Dest.:	13,8 nm
True Course:	344°
Magnetic Course:	341°

Turn left and follow the Colorado River for a while, then continue towards Cedar Park.

The city is known for its top-rated schools and safe neighborhoods.

One of the most popular attractions in Cedar Park is the H-E-B Center, which hosts concerts, sporting events, and family shows throughout the year.

The city also has several parks and trails, including Brushy Creek Lake Park and Veterans Memorial Park.

POI7-Lake Georgetown



Distance:	11,2 nm
Dist. from Dept.:	100,8 nm
Dist. to Dest.:	2,6 nm
True Course:	24°
Magnetic Course:	21°

Head north-east to reach Lake Georgetown, a reservoir on the North Fork of the San Gabriel River.



Texas Triangle Fly-In

KG TU-Georgetown Mun



Distance:	2,6 nm
Dist. from Dept.:	103,4 nm
Dist. to Dest.:	0,0 nm
True Course:	78°
Magnetic Course:	75°

Turn right and prepare to land at the Georgetown Municipal Airport.

It is a public airport serving the general aviation community of the Georgetown area and the surrounding region. The airport has two 5,000-foot runways and is equipped with modern navigation aids and lighting systems to ensure safe and efficient operations.



Texas Triangle Fly-In

Leg 2: KGTU - KJWY

Departure: Georgetown Mun (KGTU)

Destination: Mid-Way Regl (KJWY)

Distance: 121,3 nm



POI8-Jarrell



Distance:	9,4 nm
Dist. from Dept.:	9,4 nm
Dist. to Dest.:	111,9 nm
True Course:	24°
Magnetic Course:	20°

After take-off follow I-35 towards Jarrell, a small town located in Williamson County.

The town was named after a railroad promoter, O.D. Jarrell, who helped bring the railroad to the area in the early 1900s.



Texas Triangle Fly-In

POI9-Belton



Distance:	14,5 nm
Dist. from Dept.:	23,8 nm
Dist. to Dest.:	97,5 nm
True Course:	29°
Magnetic Course:	25°

Continue along I-35 and reach Belton.

The town is also home to the University of Mary Hardin-Baylor, a private Christian university with a strong reputation for academic excellence.

POI10-Temple



Distance:	7,5 nm
Dist. from Dept.:	31,3 nm
Dist. to Dest.:	90,0 nm
True Course:	59°
Magnetic Course:	55°

Turn right to stay along the I-35 and head towards Temple.

Temple is located in Bell County and is part of the Killeen-Temple-Fort Hood metropolitan area.

The city has several attractions and landmarks, including the Temple Railroad and Heritage Museum, the Czech Heritage Museum and Genealogy Center, and the Sammons Park Golf Course.

POI11-Bruceville



Distance:	14,5 nm
Dist. from Dept.:	45,8 nm
Dist. to Dest.:	75,5 nm
True Course:	23°
Magnetic Course:	20°

Continue on past Troy to Bruceville in McLennan and Falls counties.



Texas Triangle Fly-In

WACO-Waco



Distance:	15,5 nm
Dist. from Dept.:	61,3 nm
Dist. to Dest.:	60,0 nm
True Course:	22°
Magnetic Course:	19°

Stay the course, pass Lorena and fly over Waco.

Waco is known for its contributions to the agriculture and manufacturing industries.

The city is home to several museums and attractions, including the Dr. Pepper Museum, the Texas Ranger Hall of Fame and Museum, and the Cameron Park Zoo.

Waco is also known for being the site of the tragic 1993 siege at the Branch Davidian compound.

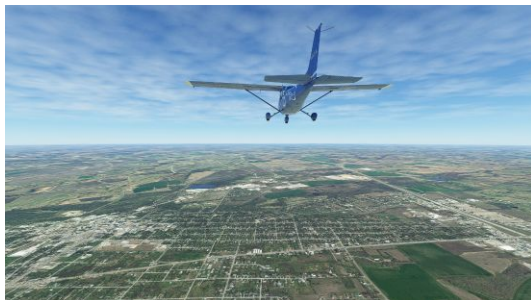
WEST-West



Distance:	14,7 nm
Dist. from Dept.:	75,9 nm
Dist. to Dest.:	45,3 nm
True Course:	5°
Magnetic Course:	2°

After crossing the Suspension Bridge over the Brazos River, stay on I-35 toward the town of West.

POI12-Hillsboro



Distance:	12,0 nm
Dist. from Dept.:	88,0 nm
Dist. to Dest.:	33,3 nm
True Course:	355°
Magnetic Course:	352°

Continue north to Hillsboro in Hill County.



Texas Triangle Fly-In

POI13-Milford



Distance:	11,3 nm
Dist. from Dept.:	99,3 nm
Dist. to Dest.:	22,0 nm
True Course:	50°
Magnetic Course:	46°

Now turn right to follow the eastern slope of I-35. Milford is a small town located in Ellis County.

POI14-Ellis County Courthouse



Distance:	16,5 nm
Dist. from Dept.:	115,8 nm
Dist. to Dest.:	5,5 nm
True Course:	18°
Magnetic Course:	15°

Follow I-35E again. Pass the town of Italy. After passing Lake Waxahachie you are in sight of Ellis County Courthouse.

The Ellis County Courthouse is a historic building completed in 1897 and considered one of the most significant examples of Renaissance Revival architecture in Texas.

The courthouse was designed by architect J. Riely Gordon, who was known for his work on other notable buildings in Texas, including the Bexar County Courthouse in San Antonio and the Cameron County Courthouse in Brownsville.

The courthouse is known for its striking red sandstone exterior and intricate carvings and sculptures. The building has been well-preserved over the years and is still in use as a courthouse today.

KJWY-Mid-Way Regl



Distance:	5,5 nm
Dist. from Dept.:	121,3 nm
Dist. to Dest.:	0,0 nm
True Course:	323°
Magnetic Course:	320°

Turn left and prepare to land at Mid-Way Regional Airport, a public airport located in Midlothian, a city in the Ellis County .

The airport was established in 1970 and serves as an important transportation hub for the region. It is owned and operated by the City of Midlothian and provides a range of aviation services, including general aviation, corporate aviation, and air cargo operations.



Texas Triangle Fly-In

It features a 6,400-foot runway, a full-service fixed-base operator, and an on-site restaurant. It also offers a range of amenities, including rental cars, aircraft maintenance, and hangar space.



Texas Triangle Fly-In

Leg 3: KJWY - 17XS

Departure: Mid-Way Regl (KJWY)

Destination: Quahadi Ranch (17XS)

Distance: 81,6 nm



POI15-Alvarado



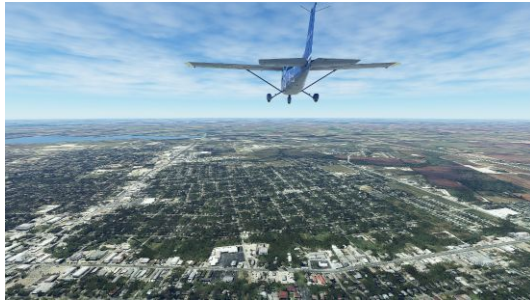
Distance:	15,5 nm
Dist. from Dept.:	15,5 nm
Dist. to Dest.:	66,1 nm
True Course:	258°
Magnetic Course:	256°

Complete the take-off procedure from runway 36 and turn west to intercept Route 67 to Alvarado, in the Johnson County.



Texas Triangle Fly-In

POI16-Cleburn



Distance: 9,6 nm
Dist. from Dept.: 25,0 nm
Dist. to Dest.: 56,5 nm
True Course: 252°
Magnetic Course: 249°

Follow Route 67, pass Lake Alvarado and fly over Cleburn.

The city is named after Confederate General Patrick Cleburne and has a rich history dating back to the late 1800s.

POI17-Lake Granbury



Distance: 15,4 nm
Dist. from Dept.: 40,4 nm
Dist. to Dest.: 41,2 nm
True Course: 274°
Magnetic Course: 271°

Turn slightly to the right and fly over Lake Granbury.

The beautiful reservoir was created in 1969 by the damming of the Brazos River and is a popular destination for recreational activities.

The lake covers an area of approximately 8,310 acres and has a maximum depth of 75 feet.

TOLAR-Tolar



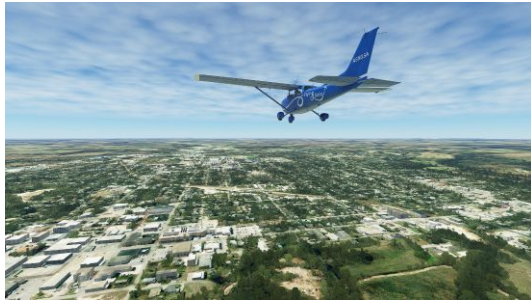
Distance: 11,7 nm
Dist. from Dept.: 52,0 nm
Dist. to Dest.: 29,5 nm
True Course: 274°
Magnetic Course: 271°

Stay on course and reach Tolar in Hood County.



Texas Triangle Fly-In

POI18-Stephenville



Distance:	17,6 nm
Dist. from Dept.:	69,7 nm
Dist. to Dest.:	11,9 nm
True Course:	235°
Magnetic Course:	232°

Turn right along Route 377 towards Stephenville.

The city is known for its rich cowboy culture and is a hub for agriculture and ranching industries.

Stephenville is also home to Tarleton State University, a public university that offers a wide range of undergraduate and graduate programs.

17XS-Quahadi Ranch



Distance:	11,9 nm
Dist. from Dept.:	81,6 nm
Dist. to Dest.:	0,0 nm
True Course:	257°
Magnetic Course:	253°

Turn slightly to the right and prepare to land at Quahadi Ranch Airport.

It is primarily used for general aviation purposes, such as private and corporate flights, and is not serviced by any commercial airlines.



Texas Triangle Fly-In

Leg 4: 17XS - KABI

Departure: Quahadi Ranch (17XS)

Destination: Abilene Rgnl (KABI)

Distance: 72,1 nm



POI19-Gorman



Distance:	12,2 nm
Dist. from Dept.:	12,2 nm
Dist. to Dest.:	59,8 nm
True Course:	280°
Magnetic Course:	276°

After take-off, turn west and follow Rout 67 in the direction of Gorman.

The small town is located in Eastland County, on the intersection of US Highway 183 and State Highway 6.

Gorman has a rich history, having been established in the late 1800s as a stop on the Texas and Pacific Railway.



Texas Triangle Fly-In

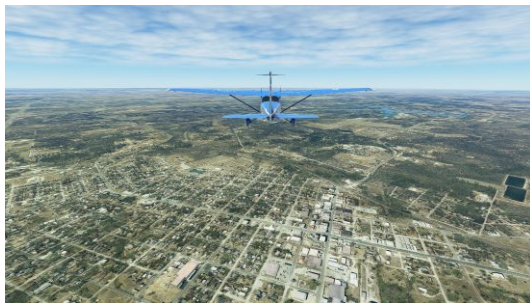
POI20-Carbon



Distance:	8,6 nm
Dist. from Dept.:	20,9 nm
Dist. to Dest.:	51,2 nm
True Course:	293°
Magnetic Course:	289°

Turn right and follow Route 6 to Carbon, located in Eastland County.

CISCO-Cisco



Distance:	10,5 nm
Dist. from Dept.:	31,4 nm
Dist. to Dest.:	40,7 nm
True Course:	312°
Magnetic Course:	308°

Continue north-west and you will soon reach Cisco, a small town located in Eastland County.

It was founded in 1881 as a small trading post and has since grown into a thriving community with a strong economy.

One of the unique features of Cisco is its historic downtown area, which has been well-preserved and is home to a number of shops, restaurants, and other businesses.

POI21-Putnam



Distance:	10,9 nm
Dist. from Dept.:	42,3 nm
Dist. to Dest.:	29,8 nm
True Course:	265°
Magnetic Course:	261°

Follow the I-20 until Putnam, located in Callahan County.



Texas Triangle Fly-In

BAIRD-Baird

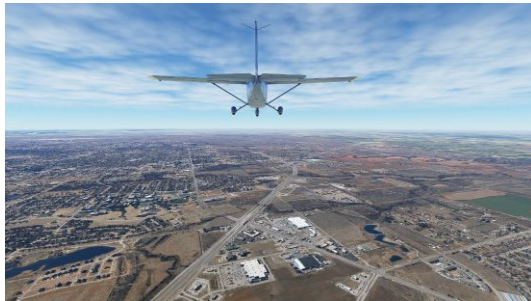


Distance:	10,2 nm
Dist. from Dept.:	52,5 nm
Dist. to Dest.:	19,5 nm
True Course:	279°
Magnetic Course:	275°

At Putnam, still follow I-20 to Baird.

The town is known for its rich history and is home to a number of historic landmarks, including the Old Settlers Reunion Grounds and the Texas & Pacific Railroad Depot.

POI22-Abilene



Distance:	15,7 nm
Dist. from Dept.:	68,2 nm
Dist. to Dest.:	3,9 nm
True Course:	287°
Magnetic Course:	283°

Stay on I-20, pass the town of Clyde and fly over the city of Abilene.

It is the county seat of Taylor County and is known for its rich history, cultural attractions, and beautiful outdoor spaces.

Abilene is home to several museums and galleries, including the Grace Museum, the National Center for Children's Illustrated Literature, and the Center for Contemporary Arts.

The city is also home to several parks and nature reserves, such as the Abilene State Park and the Red Bud Park.



Texas Triangle Fly-In

KABI-Abilene Rgnl



Distance:	3,9 nm
Dist. from Dept.:	72,1 nm
Dist. to Dest.:	0,0 nm
True Course:	173°
Magnetic Course:	168°

After flying over the city at your leisure, land at Abilene Regional Airport.

Abilene Regional Airport is a publicly owned airport that serves as a hub for regional airlines.

The airport has multiple runways and a passenger terminal and offers daily flights to Dallas/Fort Worth International Airport, which provides convenient connections to many domestic and international destinations.

Here we conclude our fly-in along Texas cities.

Created by © Perfect Flight - powered by BushTripInjector Pro Edition